

**BILL'S
TOWING
SERVICE**
DAY OR NIGHT
PHONE 944-2618
OR
PHONE 944-5172
AFTER 6 P.M.

The Aurora

The weekly newspaper of Labrador West

Vol. 1 No.24

PUBLISHED IN LABRADOR WEST, WEDNESDAY, SEPTEMBER 17, 1969

Price 10 cents



TECH GROUP VISITS — Shown here are the eleven members of the Japanese technical group and members of the Iron Ore Company of Canada management. The group arrived at the airport in Wabush for a tour of the huge mining complex in Labrador West. In addition, the Japanese group toured the mining operations at Schefferville — (Biron Photo).



DISCUSS LAY-OFF SITUATION — Tom Burgess, member of the House of Assembly for Labrador West addressed approximately 250 persons in the Wabush Recreation Center Sept. 8. The meeting was called to hear reports regarding the situation affecting 600 hourly paid employees of Scully Mines, Wabush who have been laid-off for the past four months due to a strike against Wabush Mines' Pelletizing operation at Pointe Noire, Quebec. Mr. Burgess

criticised the Company, Federal and Provincial Governments for the apparent lack of concern for a "whole town on the verge of dying". He pointed out that this was not the case some months ago when a couple of hundred fishermen were affected by pollution in Placentia Bay. He went on to say, "several Ministers from Ottawa and Provincial Ministers were "falling all over themselves" in trying to rectify the situation." The Member for Labrador West then served notice on Wabush Mines,

the Federal and Provincial Departments of Labour that he was giving them 48 hours to make a statement to the people of Wabush letting them know "exactly where they stood". He also took exception to a contractor in Wabush who allegedly is refusing to hire local people, stating "Sorry boys, we can't hire anybody, we have to hire through our Union in Montreal". Mr. Burgess warned the contractor that if they tell one more person in Wabush that they have to hire through the

Union in Montreal, "the man who tells him this will be looking for a job himself". Mr. Burgess continued his blast at the Company for re-calling workers and then again laying them off. "It is the fault of the Company that the residents are out of work and caught up in a web of circumstances beyond their control". He continued by recommending that Wabush Mines should pay each employee laid off for a 40 hour week for at least two months of the four they have been out of work. He

pointed out that additional hardship is being experienced by employees who are looking for alternate employment. Other employers are not too keen on hiring these people because their lay-off slip is marked "temporary." "This one word temporary effectively denies most workers here from even attempting to find other employment". A follow-up meeting was held on the Wednesday following and Mr. Burgess is shown above, addressing some 300 residents at that meeting — (Biron Photo).

Labrador West transportation problems discussed in detail at public hearing

The Standing Committee on Transport and Communications held public hearings in the Sir Wilfred Grenfell Hotel last Friday morning.

The Committee Members were primarily concerned with transportation problems. A brief was presented by the Town of Labrador City, Town of Wabush, the Labrador West Chamber of Commerce and the Citizens Committee of Labrador City and Wabush.

In the introduction of the briefs, a short history of both towns was given. Some interesting statistics are as follows:

The first permanent buildings consisting of four quadruplexes were built at Labrador City in 1959 and the town has quickly expanded over a 10 year period to contain 1,500 family units, containing a population of about 8,500, an additional 125 houses are under construction. It is expected that the population will reach 10,000 people within two years.

The town of Wabush was started in 1961 with some housing, a modern hotel and cafeteria under construction. It has rapidly reached a population of 3,500, with more housing planned for the future, and may eventually reach a population of 5,000.

Both towns are well planned and zoned. Modern schools provided by the mining companies serve the two towns, teaching from kindergarten to Grade XI. Church services of seven denominations are held in their respective edifices. Modern shopping centres serve the two towns, with 20 outlets in Labrador City and 6 outlets in Wabush.

A modern 70 bed hospital, constructed in Labrador City by the Newfoundland Government and operated by the Salvation Army, was opened in 1965. Three medical doctors and two dentists serve the area.

Communications are provided and operated in Labrador City by Q.N.S. & L., an associate of Iron Ore Company. They operate an automatic telephone exchange, while in Wabush Bell Telephone Company supplies the telephone system.

Iron Ore Company provide and operate a TV station with taped programs provided by C.B.C., also provided are two radio booster installations, one in English and one in French, on behalf of the Towns, Chamber of Commerce and Citizens Committee.

We are proposing a new road to Labrador City - Wabush from Gagnon, Manicouagan and Hauterive, Quebec. The new road will provide access to a

major iron ore field in the Mount Wright area and potential tourist development as well as providing a land link to the mining towns of Gagnon, Labrador City and Wabush, with a total population within two years of approximately 20,000 people.

It will be the first road link to the Province of Newfoundland from the rest of Canada, and would tie into a proposed trunk road across Labrador.

From a regional point of view the truck road across Labrador and the road Labrador City to Gagnon (in the Labrador Trough) could very well fit into the recently proposed "Mid Canada Concept" with a future road linking the area to Chibougamau, Matagami, Noranda mineral districts.

There are indications of copper mineralization to the west and north of Mount Wright near enough to make it an attractive prospecting area once access has been provided.

Quebec Cartier in recent years has been studying the possible sources of future ore. The three sources being studied are Mount Reid, which could feed the present Concentrator, Fire Lake near the proposed rail route to Mount Wright, and ore bodies at Mount Wright. The larger and longer term project is at Mount Wright with a possibility of increased production.

Considerable excess capacity is available on the railroad to Port Cartier. A railroad to Mount Wright could well make it feasible for one or more of the smaller companies in the area (Quebec Cobalt, Mount Wright Iron and Jubilee Iron hold drill indicated ore bodies) to support and finance a viable operation.

A road built ahead of or in conjunction with the railroad will make the project at Mount Wright more attractive for physiological and economic reasons. The Quebec Government has shown some interest in building a road from Manic 5 to Gagnon. The Iron Ore Companies in the region have had preliminary talks on the feasibility of a road into the area and would, we believe, consider proposals to participate in the venture.

Development roads of this nature, to develop mineral or other resources of less potential than is available here, have often involved Federal Government, Provincial Governments and usually the mining companies interested. Various formulas for financing have been employed, but perhaps the most popular is the one third, three way split.

To ensure full development of the region we believe additional direct Government participation

is required. Iron Ore companies need only a railroad to haul their ore and service their mines. The people working in those mines have been isolated from Canada for 10 years and in Schefferville for 17 years. Families working in the area find it increasingly impractical to fly out on vacation. Cars normally will be shipped to Seven Islands once per year free of charge and passes issued for railroad vacation travel. As was evidenced in the recent strike when rail service was curtailed for three months, many family vacations were cancelled. At the best of times it means tying up your car for at least ten days (going and coming) during vacation time.

Advantages of a highway would include:-

Open access to major drill indicated ore bodies.

Potential tourist development. Many vacationers from the area would make use of the road.

Inter community travel, sports activities.

A most prolific fishing area would be opened to an ever increasing demand for such facilities by tourists.

Truck service to the community would provide better quality fresh produce and mean lower cost of living due to reduced handling and reduced loss of commodity goods.

An alternate route in case of a railroad strike for normal community requirements.

A short link of some 35 miles to link to two railroads would provide alternate sources of bulk materials and or ore shipments in case of a strike or major physical problems on either railway.

The cost of such highway is difficult to estimate at this stage. The road from Hauterive to Manic 5 is built to highway specifications and is partly paved. The road from Manic 5 to Gagnon (90 miles) has not been surveyed but is sketched in on contour maps, a feasible route recently favoured by Quebec Government officials. The railroad route by Quebec Cartier is reasonably good having been laid out using aerial photos, contour maps, with some field work including soils assessment. However, final location would require detailed surveys.

Location in the Mount Wright area to Labrador City could be influenced by the Mining scheme approved, and townsite location, but in any case would not be longer than that indicated. City and Wabush, with a total population within two years of approximately miles of road from Labrador City to Duley Lake is an access road only and

would have to be improved.

Approximately 15 miles of the total road to Labrador City - Wabush would lie in Newfoundland, the remainder is in Quebec.

The costs of such a road could be spread over a number of years with perhaps \$60,000 - \$100,000 per mile initial cost for a gravelled grade, to a possible \$150,000 - \$200,000 per mile for a modern heavy highway. Possibly different formulas for different sections of the road would apply according to the interests of the province or the companies concerned.

RAIL SERVICE LABRADOR CITY & WABUSH

INTRODUCTION:-

In the past the citizens and merchants of the towns of Labrador West have expressed their dissatisfaction with current railway rates and services.

PROCEDURE:-

In order to compile the required data the writer contacted the following entities and received excellent co-operation from all quarters.

Canadian Transport Commission: Maritime Freight Rate Reduction: 20 percent reduction on freight shipped between points within the Maritime provinces including the island of Newfoundland; 30 percent reduction on freight shipped from points in the Maritime provinces to other points in Canada. (Reduction applies only over the portion between point of origin and the western boundary at Levis, Quebec.

There is no reduction applicable to freight rates for movements into the Maritime provinces.

Any railway or trucking company within the Maritime provinces can apply for this rate reduction.

The Province of Newfoundland, excluding Labrador, was included in this subsidy at the time of Confederation.

Canadian National Railways: Rate Tables:

Quebec North Shore and Labrador Railway: Existing carrier tariffs and passenger service;

Wabush Lake Railway: Canadian Freight Classification No. 22 and existing carrier tariffs.

TARIFFS

By studying the rates as outlined by the Canadian Freight Classification and comparing them to the Q.N.S. & L. individual carrier tariffs, we see that Q.N.S. & L. current rates average 9.65 percent lower than C.F.C. rates that apply in Upper Canada.

The Maritime Freight Rate Reduction Act Illustrates:-

Any freight shipped within the Maritimes is subject to a 20 percent reduction in rates; Freight shipped from the Maritimes to other points in Canada is subject to a 30 percent reduction covering the portion of the shipping that took place within the Maritimes.

If we were to have our area included in the portion of Canada covered by the M.F.R. act we stand to receive the following benefits:- We would receive a 20 percent rate reduction on all goods shipped to us from within the Maritimes; We would receive a 30 percent

rate reduction on all goods (including ore) shipped to areas outside the Maritimes; We would not receive any assistance on goods shipped to us from west of Quebec City.

CONCLUSIONS AND RECOMMENDATIONS

It appears unlikely that the Canadian Transport Commission will include our area within the M.F.R. boundaries. The reasons being:

The Federal Government does not believe that this mode of assistance is as effective as it was when introduced in 1927 and therefore would not be conducive to a further extension of the existing boundaries.

If the M.F.R. act did come into effect here, the Federal Government would be subsidising the mining companies to the tune of 17.5 million dollars per year on ore shipments alone, (unless ore shipments were excluded).

In the interest of lowering the cost of living by reducing the amount of costly handling our goods presently require, we would suggest that the Federal Government be requested to apply the equivalent amount of what a transportation subsidy would be towards the construction of a road into the area.

PASSENGER SERVICE AND EQUIPMENT

The present passenger service is operated by the Q.N.S. & L. and I.O.C.C. with train service in the area twice weekly. The Q.N.S. & L. operates between Sept Iles and Schefferville 3 times weekly. The I.O.C.C. provides service between Ross Bay Junction and Labrador City. Wabush Iron Mines supply freight service to Wabush and are the designated Public carrier on the branch line.

The trip from Labrador City to Sept Iles takes anywhere from 8 to 10 hours and costs \$8.95 for adults, \$4.45 for children 6 to 12 years of age, with no charge for children under six years.

The Q.N.S. & L. portion of the trip have fairly good coaches and operate a reasonably priced diner. The I.O.C.C. portion (Ross Bay Junction to Labrador City) is considerably less than adequate. The passenger car is of pre WW 11 vintage and is inadequately heated by a single oil stove. It should be noted that there is no charge for this service nor does the operating company accept responsibility for passengers or baggage. Freight and express are also carried free of charge from Ross Bay to Labrador City.

CONCLUSIONS AND RECOMMENDATIONS

When considering the less than adequate service between Ross Bay and Labrador City, a person must remember that it is provided on a gratis basis through the courtesy of I.O.C.C. who are not common carriers.

We would suggest that the common carrier, Wabush Lake Railway, fulfill its responsibility, providing improved heated cars and three trains weekly. Up from Sept Iles on Sunday, Tuesday and Thursday and down to Sept Iles on Monday, Wednesday and Friday, meeting Q.N.S. & L. trains at Ross Bay. Wabush Lake Railway does not operate on Q.N.S. & L. track.

(Continued on page 8)

BEAT THE BACK TO SCHOOL RUSH

Call 944-2226 or 944-5323

FOR ALL YOUR DRY CLEANING AND LAUNDRY

Daily Pick-Up And Delivery

CAROL LAUNDRY & DRY CLEANERS

PHONE 944-2226 or 944-5323



WARM WINTER FOOTWEAR EXTRA SPECIALS

**CHILDREN'S
SNOW
BOOTS**

Children's warm and cozy snow boots, just right for the cold wet weather. Available in colours Black, Red and Brown. Sizes 8 to 14.

REG. \$9.98 **\$6.47**

**LADIES' PILE LINED
DESERT
BOOTS**

A fashion favourite, ladies' desert boots with snug pile lining. Neat and tidy for winter wear. Colours Putty and Tan. Sizes 5 to 10.

REG. \$10.98 **\$7.97**

**LADIES' VINYL
SNOW
BOOTS**

Ladies' vinyl snow boots, cozy waterproof boots that keep your feet warm and dry. Colours Black or Brown. Sizes 5 to 10.

REG. \$10.98 **\$7.77**

**CHILDREN'S
SNOW BOOTS**

For warmer and dryer feet, children's snow boots in colours Brown, Red and Black. Sizes 8 to 10 and 11 to 14.

\$5.98 AND \$9.98

LADIES' SNOW BOOTS

Ladies' snow boots, tall and trim in 14 and 16 inch lengths. Colours Black, Brown, Grey and Tan. Sizes 5 to 10.

14.98 AND 15.98

LADIES' SNOW BOOTS

Better quality snow boots, 15 inches high with double zipper. Attractively styled in colours Black or Brown. Sizes 5 to 10.

\$21.98

The Aurora

Published every Thursday at Labrador West, Newfoundland and Labrador and printed by Robinson-Blackmore Printing and Publishing Limited, O'Leary Avenue, St. John's, Newfoundland. Subscription rate Canada and Foreign \$6.50

Plans, ideas for Canada's north

New highways, modernized airports, better railways and improved transportation services are recommended for Northern Manitoba. The highway and airport improvements alone would cost \$36 million.

The recommendations are contained in the report of a Commission on Northern Transportation tabled in the Legislature.

In addition, the report calls for indirect compensation for residents north of 53 degrees (approximately the same as Labrador City-Wabush) for high transportation costs. It proposes that this compensation be made through revision of income tax legislation.

Major recommendations for expansions of air and highway facilities are:

Modern facilities for mainline airports at The Pas, Thompson, Flin Flon, Lynn Lake, Gillam and Churchill, to include localizer beacons, weather reporting services, construction of paved crosswind runways and improved terminal facilities; and improved secondary services for 19 other more-remote communities. Estimated cost up to \$2.5 million. A paved highway from Thompson to Winnipeg to expand facilities for residents and tourists. Estimated costs \$17 million.

Until the program for construction of all-weather roads is completed, the report recommends that the provincial government assume responsibility for construction

and maintenance of roads. Further that until this responsibility is assumed elimination or rebate of the fuel tax is recommended.

On rail transportation, it is suggested that carriers and governments appraise rate levels to Churchill and other points to set a rate level comparable to that in more densely settled areas. Such revision is essential if penalties on northern region are to be lessened the report concludes.

Several high-calibre volunteer task forces will spread across Northern Canada this fall to assess the resources and the potential for industrial and urban development of a broad belt from Northern Newfoundland to the Mackenzie River Valley. This will be phase two of the Mid-Canada development of the area on a planned basis. The task forces will be picked from the top ranks of business, universities, and other public bodies.

Richard Rohmer, a Toronto lawyer whose imagination sparked the events leading to the conference sees the creation, five years from now, of a Crown Corporation to develop Mid-Canada. In the corporation, he visualizes provincial, territorial and federal governments as equal partners in control and financing. Its board of directors would also have representatives from business, labor, and members of the academic community. True to his beliefs, Rohmer and his

Company - worker communication need

In an age of amazing advances in the field of technical communication, it is still the failure to communicate at the human level which can sometimes evoke the most astonishment.

The case of John Smith, a company employee of 25 years' standing, is an

excellent example. On the day he received his pin admitting him to membership in the quarter century club, the editor of the company publication interviewed him in connection with a feature article on the changes he'd seen at the plant in that time.

It was a revealing interview which told a great deal about what John Smith knew about the company for which he had worked for 25 years (and even more about what he didn't.)

First, what he didn't know: The year his company was founded; the number of plants in the company; more than two of the company's products (there are over two hundred); the name of the company's president (he had been president for over three years; the location of the company's headquarters; the source of a single raw material; either the operation which preceded his own or the one that followed it (other than in the vaguest terms).

Now for what John did know: The name of his union and the number of his local; names of three out of five of his union officers; names of two columnists on the union paper; four direct benefits included in the most recent contract.

It is suggested that all long service employees are as badly informed as John Smith, but there are many more like him, than is good for our system. The situation is one which management should be concerned to remedy, not least because other considerations apart, ignorance of what the company is and does will do nothing to promote employee loyalty.

The Aluminum Company of Canada (Kingston Works) has given a notable example of this question being posed

and answered, honestly and courageously. Having several years ago reached the conclusion that radical changes were needed in its employee relations policies, it proceeded to make them progressively and within the framework of a personnel participation program.

The unfolding of the new program has been followed with great interest by observers of the industrial scene. Particular attention has inevitably been paid to three features of the program which are a startling departure from normal practice (a) abolition of time clocks, cards, and sheets (in 1962), (b) elimination of the inspection department (in 1965) and the replacement of the hourly pay system with a salary plan (in 1966). These were indeed bold moves for a major company with hundreds of employees to take but they were taken with deliberation, not as isolated gimmicks but as part and parcel of a broad program which has the fundamental aim of releasing the full potential of the company's human resources.

After seven years in operation, Alcan reports that the total program is working well. Generally speaking, it says, communications are better, people are working together more closely than they used to do, there is more helpful comment from employees at all levels about the way things are done, less supervision is necessary and, by and large, there is more job satisfaction. In short, its experiment in unconventional methods of achieving increased employee responsibility and participation is paying off and proving itself both effective and realistic.

Scanning the market

By C.S. DEVINE

A lot of money, both private and institutional is waiting for the eventual market recover. In the case of institutional money, it is being put to good use while it waits. There is great demand for cash in the money markets and at the banks. For deposits of more than \$100,000 banks now pay 7 1/2% short-term rate. Trust companies will pay 8% and 30 - 90 day paper fetches 8 - 8 1/2%.

In the case of the individual investor, it is harder to see where the money is. In times of tight money and stock market decline, the small investor's (you and I) resources suffer the inevitable shrinkage. Investment loans are not available at the banks. Margin accounts are stretched to their limits because of falling stock prices. Many investors are locked into the market with paper losses.

Nevertheless, sizable amounts of money, allocated for future investment, are accumulating in private hands. Some of it is showing up in the bond market, where dealers report a rise in retail business.

Deposit accounts are attracting new money. The banks now pay 6 1/2% for savings accounts without chequing facilities.

Trust companies pay 6 1/2% - 7% for short-term savings deposits.

The official statistics which will determine just how much money is awaiting the turnaround are not available until long after it comes. But one trend is already apparent, the money is not being spent elsewhere. Consumer spending on appliances and cars shows no unusual increase. There are no signs of a spending spree.

The long wait on the market's sidelines is remarkable to many analysts. A generation ago investors in a similar situation would be swiftly disillusioned. A sharp drop in stock prices tended to be followed by a dormant market. After the 1929 crash, life insurance companies staged a wholesale withdrawal from stocks. They finally returned but only a few years ago.

Dividend payments for the first 8 months of this year are running 6% ahead of 1968. Comparative Canadian corporation total payments \$994,211,829 for 1969 as against \$937,058,449 for last year.

A weak market, when many quality issues may become attractive buys, does little to enhance the appeal of so-called turnaround stocks. Such is the fate of Canadian Marconi Co., which earned \$591,521 in the first half, compared to a \$74,600 loss in six months of 1968. Analysts project earnings of 20c a share for the company this year. Its shares are currently selling at \$4.80, or 24 times

anticipated earnings. Its parent, English Electric Co. of England is believed to be pressuring Marconi for higher earnings. Failure would probably convince EE to sell its 51% in the Canadian company.

Comeback noises have also been heard from Clairtone Sound Corp., which managed to trim its first-half losses from nearly \$1 million in the first half of 1968 to \$233,000 in the first half of 1969. Officials running the company for the Nova Scotia government, which controls 83.5% of Clairtone, say it may break even by the end of the year. However investors are not excited; even at \$1.55 a share (it reached a high of \$15.25 several years ago), Clairtone still looks like a longshot.

Optimism that Brunswick Mining and Smelting Corp. Ltd. might break into the black this year appears to have been premature. The Bathurst, N.B. mining company reported that its loss in the first half increased to \$3.9 million from \$2.9 million a year previously. Even Noranda Mines Ltd. however has been optimistic about Brunswick's chances. Noranda bailed Brunswick out of financial trouble in 1967 when it bought control for \$50 million. The rescue program ran into more trouble with Brunswick's smelter this spring and parts deliveries were slow. Now Noranda officials say operations at the smelter are running better than ever but they are hesitant about calling for a profit this year. Next year perhaps.

Sports Spotlight

by Derm Flynn

ALL STARS TAKE HOME SILVERWARE

The Labrador All-Stars were victors in the Quebec North Shore Soccer Tournament last week. The Labrador Squad took the total goal series from the home standing Sept Iles team by a score of 7-5. Schefferville was also scheduled to take part in the tournament but had to abstain when their working agreement was ratified. The teams fought to a 4-4 draw in their first game but the Labrador boys tightened up in the second game and outscored the Sept Iles squad 3-1.

Jim Noble dented the twine four times behind the Sept Iles Goaltender, while Ivan Paul, Aubrey Pike, and Joe Power added single tallies for the Labrador victory. The team was presented with the Molson Cup for their victory.

Members of the Labrador All-Stars were - R. Grigall-goal, D. Miller, J. Watson, H. Martin, H. Tarrant, J. McCall, A. Pike, I. Paul, J. Power, L. Lanchette, B. Slaney, J. Noble, I. Tinto and R. Bain-Coach. Congratulations to our soccer boys.

TAMARACK CLUB CHAMPIONSHIP

Mike Brennan defeated Reg. Lambert in "A" Division play in the Tamarack Club Championship last week to finish the tournament and take top honours. Gerry Donahue pulled an upset in a come-from-behind victory over Colin Mosley to take "B" division.

In the "C" division, Neil Johnson defeated Claude Labbe to take the silverware. Both players were even after nine but Johnson won five of the second six holes and have then threw in the hat.

John Murphy became Junior Champ when he defeated Wayne Menard in another very close play-off.

AURORA Sports extends congratulations to all the successful golfers.

WABUSH CAPS INTER-CITY CHAMPIONSHIP

The Wabush Ladies, for the second year in a row, have captured the Hedrich Trophy emblematic of softball supremacy in the Inter City Softball League.

Coach Bob Hollett of the Wabush entry defeated the Labrador City All-Stars the home standing Sept Iles team by a score of 7-5. Schefferville was of 10-8, 6-4 and 16-11 and lost a 16-5 decision at the hands of the never-give-up Lab. City squad.

Helen O'Leary was one of the reasons for the Wabush victory as she belted six homers in the four game series.

Other members of the Wabush Squad were: E. Delahunty, M. Arsenault, F. Abercrombie, P. Boulet, W. Hedrich, M. Hedrich, G. Murphy, B. Sellers, A. Borgeson, P. McGregor, T. Green and G. Hedrich-Ass. Coach.

Reviews on recently published books

THE DAM BUSTERS By PAUL BRICKHILL CADET EDITION

Early in 1943, 617 Squadron was formed for just one special job - to smash the Moehne and Eder Dams. That epic affair made the R.A.F.'s newest squadron also its finest, the "special duties squadron". They went on to do many more unusual and perilous tasks, won two V.C.s and over 150 other decorations, and were described as the most effective unit of its size the British Forces ever had.

They were, in fact, unique; a chosen band of extremely skilful and fearless volunteers, using special weapons that could not be given to other units.

This, their story, really starts three years before they were born, when a gentle, white-haired scientist dreamed up the ten-ton "earthquake bomb", and the weird weapon which the squadron used against the dams.

Then they evolved, under Cheshire, V.C., a hair-raising pin-point marking and bombing technique, and were chosen to drop the new and very rare earthquake bombs in secret targets. Here is the story of the great dams raid, and the hitherto unrevealed details of how the Dam Busters destroyed Hitler's last secret weapon - the V3, the fabulous 500-ft. guns that were to have wiped out London. It was 617 Squadron, too who sank the Tirpitz.

Paul Brickhill was born in 1916 at Melbourne, Australia, and was educated at North Sydney High School and Sydney University. He volunteered in 1940, and was for five years a fighter-pilot in the Royal Australian Air Force. He flew Hurricanes at El Alamein, was transferred to Spitfires, and was shot down in Tunisia on March 17, 1943. A Messerschmidt 109 blew up both cannon magazines in the wings of his aircraft, smashed wings, tail and controls, and wounded Brickhill in the head and back. He attempted to bale out, but his parachute caught and he was only able to wriggle clear at the last moment

- to land in the middle of a minefield. Ironically, the wind filled his 'chute and dragged him to enemy barbed wire and captivity, where he worked on "X" Escape Organization.

After the war he wrote *Escape to Danger*, worked as a journalist in Fleet Street, Germany, Austria, Hungary and New York, and was one of the first party of British journalists to enter the Russian Zone of Germany. He returned for a short while to Australia, but came back to England and wrote *The Great Escape*, followed by this book, *Escape - or Die and Reach for the Sky*.

KOMANTCIA By Harold Keith

The Comanches were the most fierce and warlike of all the Plains Indians. Their raiding parties terrorized settlers throughout northern Mexico and the American Southwest during the 1860's.

Komantcia opens when the Comanches are at the height of their power. The time is 1865 and Pedro, a young Spanish aristocrat who is accounted the finest guitarist in Spain, has been banished to his uncle's rancho in northern Mexico.

The rancho is hit by a Comanche raid. Pedro's mother and uncle are killed. Fifteen-year-old Pedro and his younger brother Roberto are seized and brutally plunged into Comanche life. This is the story of the struggle between two contrasting cultures for the heart and mind of a proud, sensitive boy.

Despite his resistance, Pedro is gradually absorbed into the tribe and accepts its folkways and mores. He becomes a renowned horse thief and grows to love the wild, sweet life.

He learns how to trail an enemy, and how to successfully hunt wild turkeys and other small game. Few things equal, in any way of life, the exhilaration of buffalo hunt, as a small band of Indians pursue and fell great numbers of the immense, shaggy beasts. The Indian method of horseback riding is a revelation. The young men practice for

hours at throwing themselves over their mounts to ride suspended along the horse's side, virtually invisible.

Pedro's story is an absorbing and total look into the life of the fearsome Comanches. The reader comes, with Pedro, to an understanding of their beliefs and of the forces that guide their lives. There are many fascinating Indians in Pedro's new life - some good and some bad, and yet all, finally, with their own human dignity.

Komantcia is built upon carefully researched documentation of Comanche life, and of the fate of their prisoners. Pedro's story is a testament to the survival power of mankind. It shows how a strong faith can sustain a young man through the darkest of ordeals.

BETTER CHESS By Fred Reinfeld

Better Chess is unique among books giving basic instruction on the game. Beginners are so often befuddled by a confusion of diagrams and symbols that they take a long time to learn and lose heart before they are able to play. Fred Reinfeld, one of the masters of the game, knows this, and has deliberately written a text 'as clear, as simple and as brief as I possibly could'. He has cut the words to a minimum, and instead of diagrams and symbols he uses brilliantly uncomplicated photographs, which show the problems he is discussing just as they appear on the chessboard. He does not bother with the unwanted frills - this is a book for people who want to play chess soon.

Simple though this method of teaching is, the author has still managed to give all the vital information needed to play the game. This book will not make you a champion, but it will show you how to enjoy chess as a hobby.

The book was originally published as *The Modern Fundamentals of Chess*, and was so successful that it has now been converted to fit into the popular 'Better Sport' series.

Ashuanipi Social Club Ltd.

Cocktail Lounge - Ballroom

Tavern - Entertainment

Movies - Parties

Labrador City, Nfld.

Tel.: 944-2223

Phone

WESTLAB

282-6877

or

282-6632

FOR ALL YOUR
FAVOURITE BEERS

India - Black Horse - Labatt 50
Molson's Export - Dominion
Blue Star - O'Keefe
Molson's Canadian

HOME DELIVERY
FOR SMALL CHARGE

ALSO PICK-UP SERVICE
FROM HOTEL WAREHOUSE
Hours 9 a.m. to 9 p.m. Daily



Shop in comfort and

SAVE



PRICES EFFECTIVE FROM SEPT. 17th. TO SEPT. 20th.

PRIX EN VIGUEUR du 17 SEPT. AU 20 SEPT.

RED or BLUE BRAND
CANADA'S FINEST

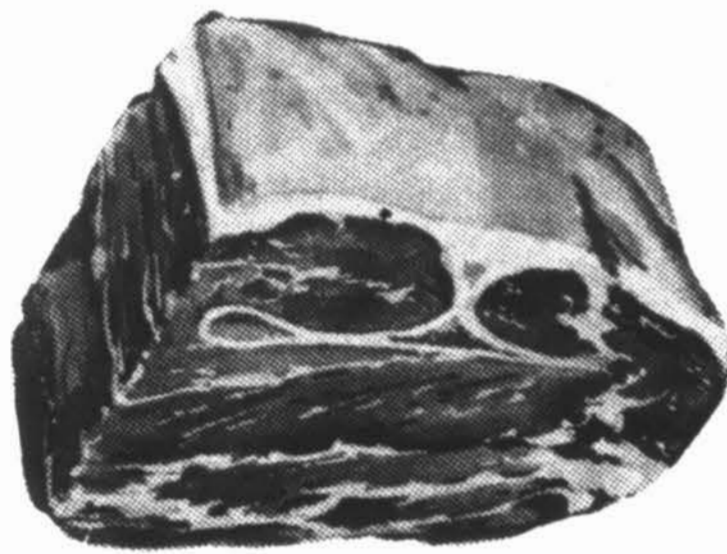
IT'S CANADA PACKERS WEEK

SEMAINE CANADA PACKERS

CROSS RIB ROAST

COTE-CROISEE

89¢ lb.



MAPLE LEAF

PICNIC HAM

EPAULE DE JAMBON

59¢ lb.

TENDER- AND-JUICY - TENDRE ET JUTEUX !

BLADE ROAST

ROTI DE PALETTE

69¢ lb.

MAPLE LEAF

BACON

SUGAR - CURED
TRAITE-AU-SUCRE

93¢ lb.



SHOP EARLY FOR BEST SELECTION

YORK

VIENNA SAUSAGE 4 oz. **2 FOR 59¢**
SAUCISSE VIENNA

YORK

MEAT BALLS WITH GRAVY 12 oz. **49¢**
BOULETTES DE VIANDE

MAPLE LEAF

KAM - MEAT SPREAD 3 FOR 72¢
PATE DE VIANDE 3 oz.

MAPLE LEAF

CHED - R - SPREAD CHEESE 45¢
FROMAGE FONDU 8 oz. JAR POT

MAPLE LEAF

DOMESTIC SHORTENING 1 lb. **37¢**
GRAISSE DOMESTIC

MAPLE LEAF

CHUM DOG FOOD 15 oz. **6 FOR 89¢**
NOURRITURE A CHIEN

MAPLE LEAF

KLIK PORK LUNCHEON 12 oz. **63¢**
PAIN DE VIANDE

Tempting Produce

FRESHNESS IS MORE THAN A WORD WITH US

POTATOES

PATATES N. B.
NEW BRUNSWICK



BAGS

25 lb
SAC

1.69

ORANGE 113's **79¢** DOZ.
SUNKIST SWEET JUICY

RADISH CELLO **2 FOR 29¢**
RADIS CELLO

DELIVERY HOURS

MON. - TUES. - WED. & SAT.
DELIVERY CLOSSES 5P.M.
DELIVERY CLOSSES FRI. 7 P.M.

WE RESERVE THE RIGHT TO LIMIT QUANTITIES.

NOUS NOUS RESERVONS LE DROIT DE LIMITER LES QUANTITES

BOWRING'S

SUPERMARKET - LABRADOR CITY

Social calendar

THURSDAY - SEPTEMBER 18

Ashuanipi Social Club - Movie "White Feather" O'Brien Hall - Games Night starting at 8:30 p.m. Sir Wilfred Grenfell Hotel - Movie starting at 8:30 p.m.

FRIDAY - SEPTEMBER 19

Ashuanipi Social Club - Games Night O'Brien Hall - Teenage Dance starting at 8:30 p.m.

SATURDAY - SEPTEMBER 20

Ashuanipi Social Club - Dance commencing at 9:00 p.m. - Music by the Krystals

SUNDAY - SEPTEMBER 21

Ashuanipi Social Club - Dance at 9:00 p.m. - Music by the Krystals

MONDAY - SEPTEMBER 22

Ashuanipi Social Club - Movie "Proud and Profane"

TUESDAY - SEPTEMBER 23

Ashuanipi Social Club - Movie "Hatful of Rain" Sir Wilfred Grenfell Hotel - Movie at 8:30 p.m.

ROYAL THEATRE LABRADOR CITY

WEDNESDAY - SEPTEMBER 17

"The Big Bounce" starring Ryan O'Neal and Leigh Taylor-Young

THURSDAY - FRIDAY - SEPTEMBER 18 and 19

"Hard Contract" an immoral picture

SATURDAY - SEPTEMBER 20

"Captain Sindbad" starring Guy Williams.

SUNDAY - MONDAY - SEPTEMBER 21 - 22.

"The Stalking Moon" starring Gregory Peck, and Eva Marie Saint.

TUESDAY - SEPTEMBER 23

"Payment in Blood" starring Ed Byrnes and Enio Girolami, Louise Barrett

ROYAL CANADIAN LEGION - WABUSH

WEDNESDAY - SEPTEMBER 17

- Movie "Gunfight at O.K. Corral"

SATURDAY - SEPTEMBER 20

- Dance - Music by the Nite Beats - from 9:00 p.m.

SUNDAY - SEPTEMBER 21

- Games Night commencing at 8:30 p.m.

MONDAY - SEPTEMBER 22

- Knock Out Darts commencing at 8:30 p.m.

TUESDAY - SEPTEMBER 23

- Games Night commencing at 8:30 p.m.

WEDNESDAY - SEPTEMBER 24

- Movie "Desert Rats" starting at 9:00 p.m.



Miss Janice Dunkin, daughter of Mr. and Mrs. J. L. Dunkin, 316 Carson Avenue, Labrador City is the second student in the area to be awarded an Iron Ore Company of Canada, Scholarship. Miss Dunkin will be leaving shortly for Carlton University, Ottawa. This scholarship is also worth \$3,500.00



Miss Nancy Riley, daughter of Mr. and Mrs. Albert Riley, 410 Grenfell Crescent, Labrador City has been awarded the Iron Ore Company of Canada Scholarship valued at \$3500.00. Miss Riley will undertake studies at the University of New Brunswick.

The lighter side

A memorandum issued by the chief clerk of a London borough in England advises: "Owing to a severe shortage of staff, officials are requested to take advantage of their typists between the hours of noon and 2 p.m."

Dr. Robert McClure, moderator of the United Church of Canada, quoted in the Canadian Magazine: "We're not getting enough natural sex in North America. Sexual activity here is very low by Asian standards; they'd consider the average Canadian almost a paraplegic."

The Executive Digest tells of two drivers who were surveying the damage to their respective cars following a collision. One pulled out a whisky bottle and offered the other a drink, saying: "It'll help calm you down."

"Thanks" replied the second driver taking a swig and returning the bottle. "Are you having one, too?"

"Yes" replied the other, "but I think I'll wait until after the cops go."

From the Dublin Irish Court Reporter: "Counsel for the defendant denied the charge (assault and battery) and claimed that plaintiff's account of his injuries were exaggerated. He agreed plaintiff had suffered a broken nose, a cut over his left eye, several bruises and the loss of three front teeth, but said he was otherwise, unhurt."

William McChesney Martin, chairman of the U.S. Federal Reserve Bank, quoted in Forbes Magazine: "An economist is a man who would marry Elizabeth Taylor for her money."

For as long as folks could remember, Mr. Kaplan had his store windows plastered with signs saying he was going out of business. But despite the "Must Vacate" and "Last Days of Closing Sale" signs, he kept open and business flourished. One day, however, he confided to a friend that he had a problem.

"My son graduates from college soon and I don't know what to do with him."

"Why don't you buy him a store of his own," suggested his friend, "and let him go out of business for himself?"

Murray Stephens in an Ottawa Journal story on parking tickets, quotes this letter to Ottawa's police chief from a Fitzroy Harbour, Ont., protester: "Sorry about this traffic violation, but when you get into a doctor's office and are told to strip and then he takes his own sweet time to come back for the examination, it is very difficult to run and put in money in the little monster - the parking meter."

A businessman dropped into a fancy restaurant for lunch. After gazing in alarm at the high prices, he signaled the waiter and asked, "Do you have another menu for people who aren't on an expense account?"

Fact and Comment, published by Harry Price, Hilborn Insurance Ltd., Toronto: "We have thought of printing in the upper left-hand corner of our envelopes: 'If not delivered in five days you might as well give up, there isn't a sixth'."

Dr. Roger O. Egeberg, dean of the University of Southern California School of Business: "A dean is supposed to be to the faculty and students what a fire hydrant is to a dog."

LEGAL CARD

DAVID B. SPARKES

Lawyer - Advocate
Shopping Center Mall
Phone 944-5555

PRESCRIPTIONS

24 hour service
MONDAY TO FRIDAY
9:00 A.M. to 9:30 P.M.
SATURDAY 10:00 A.M. to 8:00 P.M.
SUNDAY 12:00 NOON to 8:00 P.M.

PHONE 282-6800 or 282-6825
(after 10 p.m. 282-6803)
"Your Health is Our Business"
NORTHERN DRUGS LTD.
Wabush Plaza



Labrador West

Integrated School Board

Invites applicants for substitute teachers for the Amalgamated School section of J.R. Smallwood Collegiate, Wabush, and the Labrador City Amalgamated School in Labrador City, for the School Year 1969-70. Applicants must apply in writing to:

Supervising Principal,
Labrador West Integrated School Board,
P.O. Box 40,
Wabush, Labrador.

Church calendar

CAROL UNITED CHURCH

Rev. William Mayberry

11:30 a.m. Morning worship
 7:15 p.m. Evening worship
 Saturday: Sing-a-long Club at 7:00 p.m.
 10:30 a.m. Sunday School, all depts.
 11:30 a.m. Nursery and kindergarten

ST. PAUL'S ANGLICAN CHURCH

Rev. William Bellamy

8:00 a.m. Holy Communion
 10:00 a.m. Holy Eucharist
 7:15 p.m. Evening prayer

SUNDAY SCHOOL

10:00 a.m. Nursery and Kindergarten
 10:30 a.m. Grade One and up
 11:30 a.m. Nursery and Kindergarten

MONDAY

7:00 p.m. Choir Practice

PENTECOSTAL CHURCH

Seeks 'info'

James McGrath, the Federal Member for St. John's East, and member of the standing committee on Transport, proposed a motion at the hearings in Schefferville on Saturday morning, that Mr. Ira Tucker, Resident General Manager of Crosbie Enterprises and Mr. Baron McDonald, Executive Assistant to Mr. Andrew Crosbie, be called before the committee on its return to Ottawa to give evidence as to the operation of the Air Terminal Building at Wabush Airport.

The Air Terminal is owned by Wabush Enterprises, a subsidiary of Crosbie Enterprises.

GLAD TIDINGS TABERNACLE

Pastor B.H. Hartwell

SUNDAY

11:00 a.m. Morning Worship
 3:00 p.m. Sunday School
 7:30 p.m. Evangelistic Service
 Tuesday: Prayer Service at 8 p.m.
 Thursday: Young peoples service at 8:00 p.m.

SALVATION ARMY CITADEL

Capt. Harold Rideout

11:00 a.m. Holiness Meeting
 2:30 p.m. Sunday School
 7:30 p.m. Evangelistic Service
 Thursday Home League 8:00 p.m.

OUR LADY OF PERPETUAL HELP

Rev. J. Laperriere, O.M.I. and Rev. F. Lemire

SUNDAY

9:00 a.m. Mass
 11:00 a.m. Mass
 5:00 p.m. Mass in French
 7:00 p.m. Mass
 Weekdays: Mass at 7:00 p.m.

CHRIST CHURCH WABUSH

(Presbyterian Church in co-operation with the United Church)

Rev. J. R. Dickey, BA., BD.

11:00 a.m. - Morning service
 9:45 a.m. - Sunday school

OUR LADY OF THE ASSUMPTION, WABUSH

SUNDAY

10:00 a.m. Mass
 7:00 p.m. Mass
 Weekdays: Mass at 7:00 p.m.
 There is confession before each Mass.



Mr. and Mrs. Robert Benson, photographed following their wedding which took place August 27, 1969 in St. James United Church, St. John's, Nfld. Mrs. Benson is the former Annie Ruth Taylor, daughter of Mr. and Mrs. William Taylor, 15 Burke Place, St. John's. The groom is the son of Mr. and Mrs. Fred Benson, 91 Oxen Pond Road, St. John's. Best Man for the occasion was Mr. Fred Benson, Usher, Derek Martin and David Benson. The bridesmaids were Heather Shields, Barbara Martin and Marilyn Taylor. The honeymoon was spent touring Eastern Newfoundland. The happy couple have now taken up residence in Wabush. Bob is employed as Manager of the Sir Wilfred Grenfell Hotel.

Labrador West transportation

(Continued from page 2)

therefore a through service from Sept Iles to the area is impossible, yet through service could save about one hour in trip time.

SEVERAL SOLUTIONS ARE POSSIBLE:

Wabush could operate 3 trains weekly to meet Q.N.S. & L. trains; Wabush could purchase suitable cars to serve the area and arrange for Iron Ore Company to carry out the service;

Wabush charter as Public carrier could be cancelled and Q.N.S. & L. be designated the Public Carrier. Q.N.S.&L. presently do not have any rights on Northern land tracks, yet to provide proper service from Sept Iles to the area, only one Public carrier through the system can provide the most desirable and economic service;

Option 3 does not seem practical under the present agreements, however if Carol Lake Railway operated by Iron Ore Company were the common carrier a desirable passenger service would be more practical to arrange;

Carol Lake Railway could be approached to improve passenger comforts.

The area is presently served by Quebecair operating out of Montreal, and serving communities along the St. Lawrence including Sept Iles, then north to Gagnon, Wabush and Schefferville.

Daily service is provided by a jet aircraft and Fairchild with a capacity of 70 & 34 passengers respectively. Fairchild to continue to Schefferville.

Since the inception of the jet service some flights have been

cancelled or would not land due to weather conditions. We feel that a Fairchild probably would have landed. However, we are told that this situation will be alleviated by the installation of ground controls to be completed in 1971.

The most frequent complaints heard regarding Quebecair concern rates, particularly between Wabush and Sept Iles, \$24.00 for 200 air miles. This is high compared to rates in Central Canada, and compared to air mile rates for Quebecair in Sept Iles from Montreal. Perhaps airlines and others take the attitude, "that's a highly paid area they can afford it". A considerable number of people will now use the railroad instead of using airlines whenever possible.

Eastern Provincial Airlines serve the area with one jet arriving at 12:45 A.M. and departing at 1:30 A.M. The most frequent complaints heard are listed: "What an ungodly hour to travel with kids;" Why don't they advise passengers in time when flights are cancelled. People have been called to the airport as many as four times before catching a flight; Why are rates so high? Labrador City to St. John's (700 miles) \$86.00 St. John's to Montreal (Approximately 1000 miles) \$66.00.

The introduction of a jet service into Wabush has in fact led to a deterioration of service particularly by Eastern Provincial Airlines.

Perhaps when decisions are made on recent applications re routes from Goose Bay, Labrador City to Montreal by Quebecair and Eastern Provincial Airlines, air service can be restored to some semblance of service.

PAT REDDICK

SNAP ON TOOL DEALER FOR LABRADOR CITY AND WABUSH

PHONE 944-3381

ALSO AVAILABLE FROM CARRE COMPANY LIMITED

804 Hudson Drive

Phone 944-2410

(opposite town hall)

City Drugs Limited

24 HOUR PRESCRIPTION SERVICE

2 PROFESSIONAL PHARMACISTS TO SERVE YOU

OPEN Monday to Friday

9:00 a.m. - 9:30 p.m.

Saturday's 10:00 a.m. to 8:00 p.m.

Sunday's 12:00 Noon to 8:00 p.m.

TELEPHONE 944-2448 or 944-5395

"WE TREAT THE SICK WELL"

ANNOUNCEMENT

THE ACTION FOR JOEY COMMITTEE WISH TO ADVISE RESIDENTS OF LABRADOR CITY AND WABUSH THAT CAMPAIGN OFFICES ARE NOW OPEN.

IN WABUSH-room No.2 (upstairs)

Wabush Recreation Center

Telephone 282-6726

In Labrador City -----Trailer Number 110



Canada Grade "A" -CRY-O-VAC
BROILER CHICKENS

YOUNG AND TENDER
 EVISCERATED
 READY to the OVEN!

2-3 lb.

lb.

49¢



Jeunes-Tendres-Canada
 Categorie "A"
 Evisceres-Cryovac
 POULETS a ROTIR

POULETS À RÔTIR

Maple Leaf or Legrade=Defatted Smoked

**COTTAGE ROLLS
 ROULES COTTAGE**

Maple Leaf ou Legrade-Cryovac

Gras enleve

95¢ lb.

*CHICKENS
 FOR
 ROASTING! BOILING!
 FRYING! STEWING!
 COLD CUTS, TOO!*

Jubilee Brand

RINDLESS BACON 1 lb. Pkg. **85¢**

Bacon Sans couenne-Jubilee

Tasty Economical

BEEF STEAKETTE lb. **73¢**

Steakettes de Boeuf-Savoureuses



SAVE ON GROCERY SPECIAL!

FRESH FRUIT AND VEGETABLES

Kellogg's
CORN FLAKES Pqt. 12 oz. Pkg. **35¢**

Flocons de Mais de Kellogg's

Carnation
Evaporated MILK 5 Btes 16 oz. Tins **1.00**

Lait Evapore Carnation

Ardmona choice
SLICED PEACHES Bte 28 oz Tin **57¢**

Peaches Tranchees Ardmona

Village Brand
MARGARINE 4 Pqts. 1 lb Pkgs. **1.00**

Margarine de Marque Village

Domino Cut Wax or
GREEN BEANS 4 Btes 14 oz tins **75¢**

Fèves Vertes ou Jaunes-Coupees Domino

Save-Epargnez
AJAX CLEANSER Btes 3 Reg. Tins **79¢**

Nettoyeur Ajax

Hilltop
TEA BAGS Special Pqt. de 100s **75¢**

The en Sacs Hilltop

Quebec Grown Fancy Grade-Crisp-Juicy
**LOBO APPLES
 POMMES LOBO**

Categorie Surchoix

du Quebec-Juteuses-Croustillantes

5 lb. **79¢**

South African-Sweet-Juicy
OUT SPAN ORANGES **99¢**

Oranges Outspan-De l'Afrique du Sud. Gross 88

Douz. Doz.

Quebec Grown No. 1 Grade-Young-Tender
CARROTS Cello 5 lb. **59¢**

Carottes en Pquet-No. 1 du Quebec-Tendres

Quebec Grown No. 1 Grade-Yellow
SMALL ONIONS 10 lb. **1.19**

Petits Oignons-Categorie No. 1 du Quebec

EVERYTHING GUARANTEED! TOUT EST GARANTI!
 ● **CENTRE D'ACHATS CAROL LAKE
 SHOPPING CENTRE, LABRADOR CITY**
 et - and ● **WABUSH PLAZA, LABRADOR**

We reserve the right to limit quantities
 Nous nous réservons le droit de limiter les quantités
 Prices effective until closing Sat. Sept. 20, 1969
 Prix en vigueur jusqu'à la fermeture Sam. 20 Sept., 1969

DOMINION STORES LIMITED



Colgate Format Super
DENTAL CREAM **96¢**

Dentifrice Colgate

Social and personal

The Catholic Ladies League of Wabush held their first meeting of the 1969-70 season on Sunday, September 14. The meetings are held on the first Sunday of each month at 8:00 p.m. Any interested ladies in the parish are invited to join in this worthwhile work of the church.

The Naval Cadets resumed activities on Monday September 15. The training will take place in the Recreation Centre at Wabush each Monday evening from 7 to 10 p.m. Any boys in Wabush or Labrador City, who are 13 years of age on or before September 1 up to 19 years are invited to join. The Commanding Officer is Capt. D.A. MacIntyre and the Executive Officer is Lieut. R.J. Butler.

At the annual meeting of the Anglican Church Women's Association held at St. Peter's Church, Wabush, on Monday September 8, the following were elected as officers:

President: Mrs. Carolyn Hubbard; Vice President, Mrs. Margaret Goodwin; Treasurer, Mrs. Grace Ambler; Secretary, Mrs. Valerie Foster.

The Red Cross Association resumed activities on Monday September 15th when the first meeting of the season was held at the Recreation Centre, Wabush.

Registration for Minor Hockey will take place at the arena, Labrador City and the Recreation Centre, Wabush on Saturday, September 20.

Mr. Ed Hunt and Mr. Whit Kean will represent the Minor Hockey of this area at a Provincial Association meeting to be held in St. John's this weekend.

The Ladies Association of Christ Church, Wabush held its annual meeting at the Church on Monday September 8. The following ladies were elected as officers for the 1969-70 season: Mrs. Pat Murchey, President (re-elected) Mrs. Loretta Sherran, 1st Vice - president; Mrs. Jean Young - 2nd Vice President; Mrs. Bessie Sanders, Secretary; Mrs. Muriel Henderson, Treasurer.

Tea was served by Mrs. Sherran and Mrs. Arsenault.

The Sacred Heart section of the J.R. Smallwood Collegiate at Wabush is now accepting applications for Substitute teacher for the year 1969 - 70. Please phone 282-6743 to arrange for an interview.

Best wishes to the following young people who left Wabush recently to further their studies: To attend Memorial University, St. John's are Gordon, son of Mr. and Mrs. Dudley Crowther; Derm, son of Mr. and Mrs. Stephen Rogers; Janet, daughter of Mr. and Mrs. John Ambler; Mike, son of Mr. and Mrs. P.J. McGregor; Hughie, son of Mr. and Mrs. L. Pond; Helen, daughter of Mr. and Mrs. Paul O'Leary and Doreen, daughter of Mr. and Mrs. P. Besnes. The Connell brothers, sons of Mr. and Mrs. Royce Connell - Eric is attending Carleton University at Ottawa and Wayne at the Nova Scotia College of Art and Design. Tom Jr., son of Mr. and Mrs. Tom Gillespie has left for Loyola College in Montreal.

Back recently for a holiday with her family was Miss Heather Antle, daughter of Mr. and Mrs. Roy Antle, Wabush. Heather has finished her first year of Nurse's training at the Grace General Hospital, St. John's and has gone to Windsor, Ontario to complete her training.

Mrs. Nita Wood is back at the desk at the Wabush Townsite Office after spending a very enjoyable holiday visiting England, Scotland, Wales and Toronto.

Mrs. Margaret Ghory and her children, Humera, Peter and Stephen have returned to Wabush after spending the summer with relatives in the Midlands, England. Mrs. Ghory is the Home Economics Teacher at the J.R. Smallwood Collegiate.

WANTED TO BUY
1 Engine for '63 Volkswagen
MUST BE IN GOOD
CONDITION - PHONE
944-2116

FOR SALE
1 - Camper Trailer
Excellent Condition
PHONE 944-3378

The Well Baby Clinic will be held Wednesday afternoon from 1:30 to 4:30 p.m. at the Jackman Memorial Hospital. Friday Clinics will continue usual.

VOLUNTEERS NEEDED
Volunteers are needed to help at the Well Baby Clinic, Jackman Memorial Hospital each Wednesday and Friday afternoon. Each volunteer only need come once a month. If you are able to volunteer, please leave your name and phone number at the hospital switchboard.

FOR SALE
1 - Truck Camper
Like New Condition
Phone 944-5407

FOR SALE
1 - 14 1/2 Foot Chesnut Boat with Canopy and Trailer 1 - 35 HP Mercury Motor, with gas tank and cans Phone 944-2377 or call at 709 Richard Crescent.

Arena schedule for week of September 17 to 23

WEDNESDAY: Ice Rentals Public Skating 8:30 to 10:30 p.m.

THURSDAY: Ice Rentals Ladies' & Tots skating 10:00 to 11:30 a.m.

FRIDAY: Ice Rentals

SATURDAY: Ice Rentals Public Skating 1:00 to 3:00 p.m. and 8:30 to 10:30 p.m.

SUNDAY: Ice Rentals Public Skating 1:00 to 3:00 p.m.

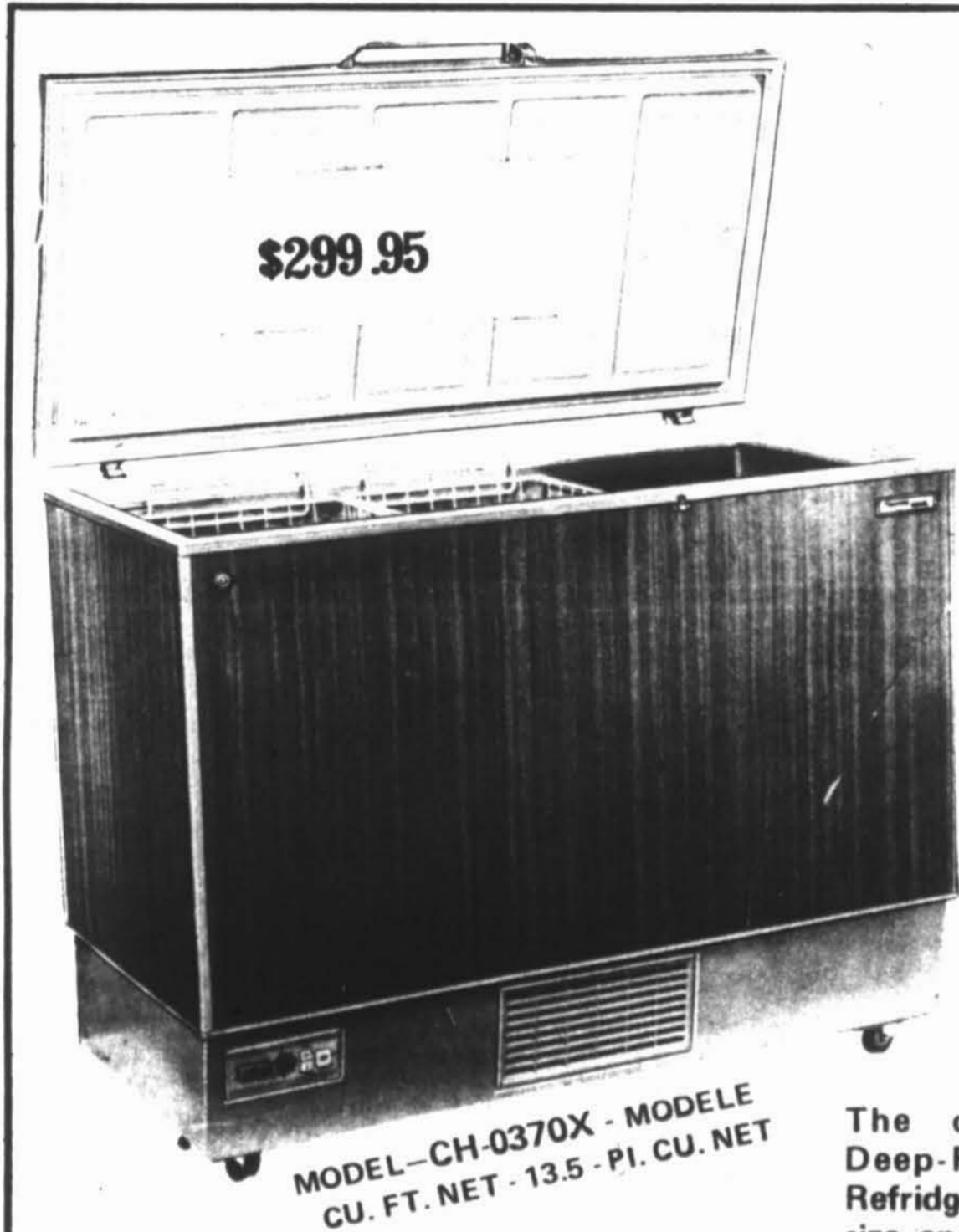
MONDAY: Ice Rentals Public Skating 8:30 to 10:30 p.m.

TUESDAY: Ice Rentals Ladies' & Tots Skating 10:00 to 11:30 a.m.

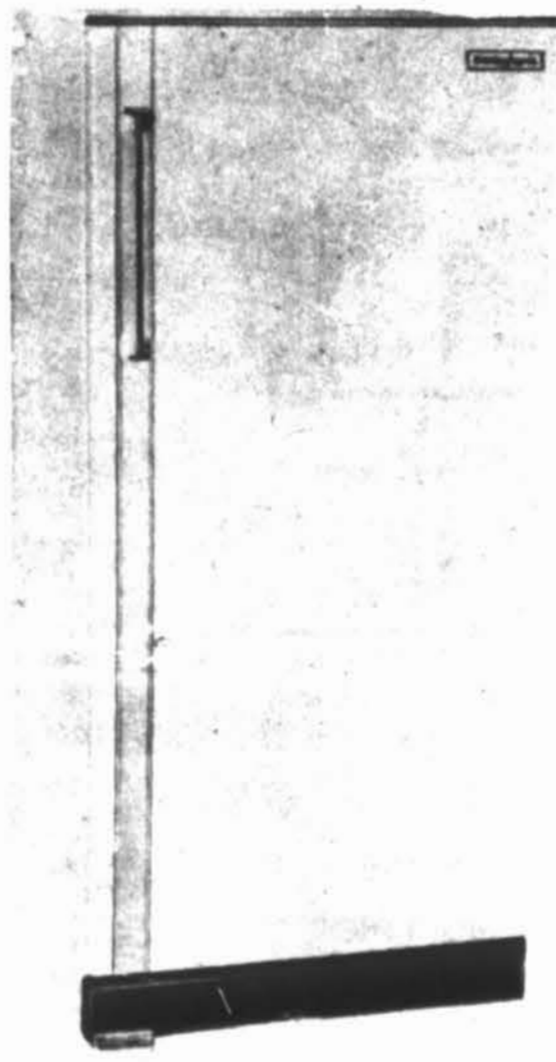
FOR SALE
1 - 12" Portable TV - NEW - NEVER USED
COLOR: Black & Silver
GERRY CORBEIL, HUSSEY
APT. NO. 9

FOR SALE
1969 Chrysler Newport Custom - 2,400 miles Interested person - please call 944-5483 after 5:00 p.m. or call at 2 Maple Crescent.

WANTED
Girl or Woman to babysit 5 days a week from 3:30 - 11:30 p.m. One pre-school child. For further information call 944-5966.

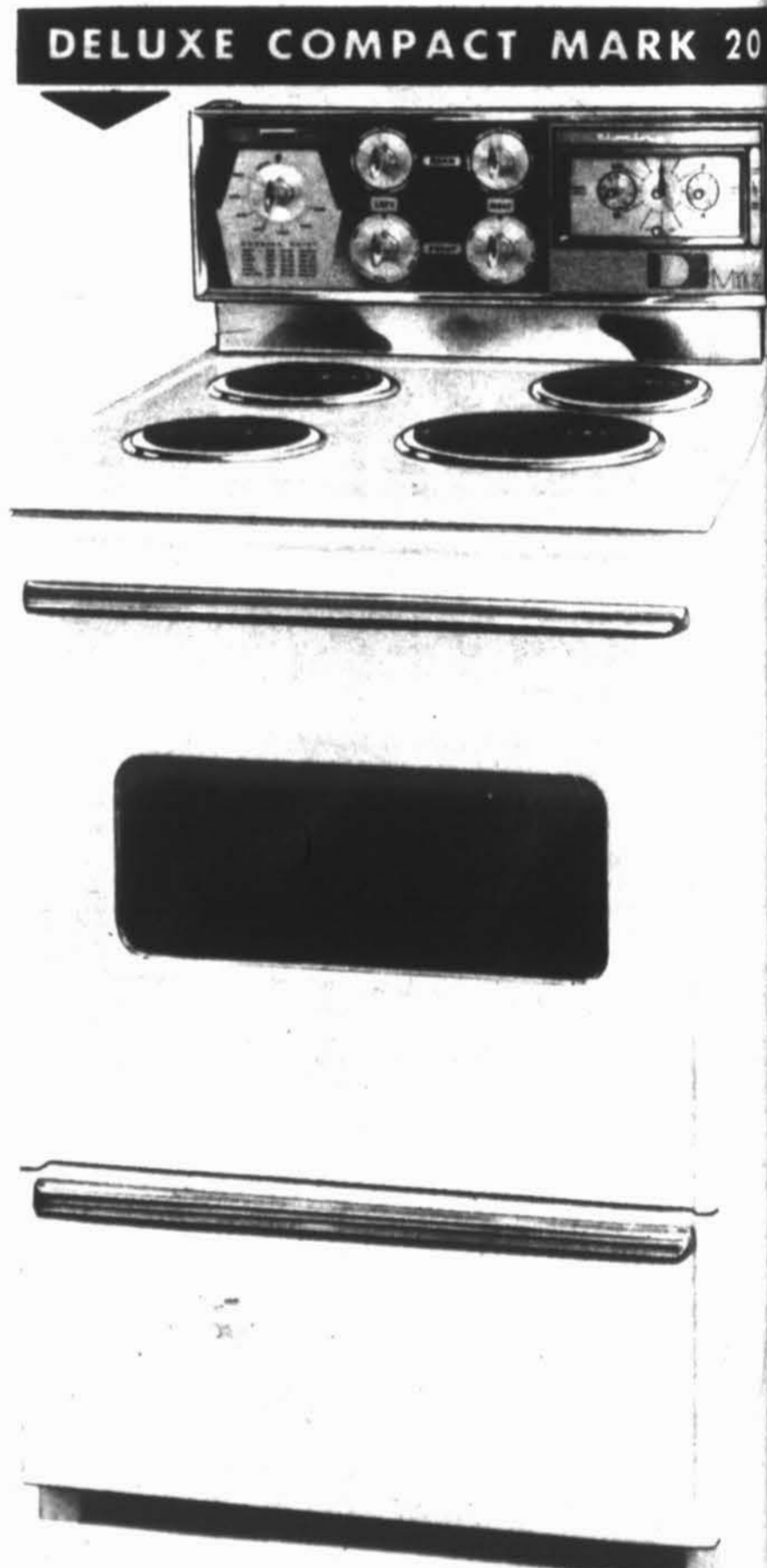


MODEL-CH-0370X - MODELE CU. FT. NET - 13.5 - PI. CU. NET



MODELE No. 8305 \$249.95

The complete DANBY/IGNIS line of, Deep-Freezers, Up - Right Freezers, Refrigerators, from apartment to the largest size, and Electric Stoves.



MODEL No. M20 \$219.95

53 Pc. SET OF CHINA FREE WITH EACH PURCHASE OF A FREEZER (THIS OFFER ENDS SEPTEMBER 30, 1969)

ARE NOW AVAILABLE IN LABRADOR CITY AND WABUSH-INQUIRE ABOUT OUR PRICES AND TERMS

P.O. Box 852

DOFT DISTRIBUTORS LIMITED

Telephone 944-5524

Big reception given transportation committee

"The hottest reception we received so far", was the comment of several M.P.'s, who arrived at Wabush last Thursday evening, with other members of the Standing Committee on Transport.

The twenty - member committee arrived in an Air Canada charter flight at Wabush airport, which was literally jammed with residents. An estimated three hundred persons were present, carrying everything from placards demanding a road, to tiny tots dressed as walking billboards advertising the fact that they were not in favour of "Joey".

One member of the committee, Ambrose Peddle, federal member for the riding of Grand Falls, White Bay, Labrador was singled out by the crowd, and while the actions were not hostile, he was greeted with boo's and jeers as he entered the terminal.

The transport committee commenced hearings Friday morning at 9:30 in the Caribou Room of the Sir Wilfred Grenfell Hotel. Approximately 150 people jammed the Hotel to try and gain admittance to the hearings.

Mr. Lessard, the Chairman, opened the hearing by introducing all members of the committee, and calling Mr. Jack Dunkin to present the brief on behalf of the citizens committee. Quiet did not prevail for very long, as people in the hallways could not hear the proceedings due to the absence of a public address system. Order could not be restored and on a motion from Mr. James McGrath, the federal P.C. Member for St. John's East, the Chairman adjourned the hearing and advised that proceedings would again commence in the Wabush Recreation Center, which could accommodate the overflow crowd.

Briefs were presented by the Labrador West Chamber of Commerce, the Towns of Labrador City and Wabush, the Citizens Committee of Labrador West, the Royal Canadian Legion Branch at Wabush and The United Steelworkers of America. In addition to written submissions, the committee indicated that they would also accept verbal briefs from interested parties or persons. Both Mr. Bill Wortelboer of Dunphy

Aldred, and Mrs. Clarkson of Wabush presented oral briefs.

All parties making submissions were in agreement that top priority should be given by the governments concerned to the building of a road, connecting Labrador West with the Quebec Highway system. At the present time one hundred and eighty miles of new roadbuilding would be required to hook up with the paved highway at Manic 5, a Hydro development ninety miles from Gagnon, Quebec, where Quebec Cartier Mining operates an iron ore mining complex. Gagnon is approximately ninety miles from Labrador City. Cost of such a road system were estimated to be in the vicinity of 60,000 to 100,000 dollars per mile for a graveled grade to 150,000 to 200,000 dollars per mile for a modern heavy duty paved highway. By adding another seventy five miles from the west, the giant Hydro development at Churchill Falls could be connected to Labrador City.

Both EPA and Quebec

Air came under heavy fire in all submissions with regards to the present air service provided by both companies. It was shown that their passenger rates were eighteen to twenty per cent higher than equivalent mileage on other airlines such as Air Canada. Freight rates and Air Express rates were shown to be 100 per cent higher on EPA routes and 200 percent higher on Quebecair routes than similar distances with Air Canada.

The Airport facilities also came in for criticism and it was pointed out that when EPA's night flight arrives there is no air traffic controller on duty in the control tower. The Department of Transport Control Tower closes at 9 p.m. EPA flights are under the control of the Airport at Moncton, N.B.

In the discussion on air rates, a spokesman for the Canadian Transport Commission, informed the hearing that the CTC does not approve rates, they only file them". Only in the event of complaints will they investigate. Mr. Jim McGrath termed the present

rates of both airlines as "unjustly high".

Improvement of railway facilities to the towns were also requested.

The committee accepted a verbal brief from Mrs. Clarkson of Wabush with regards to the high cost of living in the area. Committee members proposed that they would direct the evidence received to the appropriate department in Ottawa, The Hon. R. Basford, Minister of Consumer Affairs.

The priority in briefs presented was, the request that offices of Federal departments, such as Unemployment Insurance Commission, Immigration, Taxation and Consumer Affairs be established in Labrador West.

The Chairman of the Standing Committee on the completion of hearings expressed his satisfaction with the briefs presented and also that the public in general were so interested, which was noticeable by the large attendance.

Some members of the committee remarked that the hearings here were by far the best attended.

MEMORIAL UNIVERSITY OF NEWFOUNDLAND

The Memorial University of Newfoundland will offer the following evening courses for credit during the Academic year 1969-70.

MATHEMATICS 115

A course in Mathematics for primary and elementary teachers. This course will also be helpful to parents who have children in the new mathematics programs.

SOCIOLOGY 341

Sociology of Learning. For persons who do not have a University degree or an Introductory Course in Sociology, special materials are available to prepare them for the course.

Application forms are available on request by writing to:

MR. D. SPRACKLIN
P.O. BOX 1573, LABRADOR CITY
 or by phoning-
Mrs. Adams at 944-2381

Registration night will be Thursday, September 18 at Labrador City Collegiate beginning at 7:30 p.m.

Entertainment page for young people

SWITCH THESE THREE TRICKY NUMBERS, SHOWN ON THE ACROBATS, SO THAT THEY WILL BE DIVISIBLE BY SEVEN.

ANSWER: TURN THE 6 TO MAKE 9 AND DIVIDE 931 BY 7.

TRY TO SPELL 4 ANIMALS BY USING THE LETTERS IN "X FLOWS".

FOX, OX, SOW, WOLF

WHEN DOES A CIRCUS GIRAFFE CHANGE ITS SPOTS?

WHEN IT MOVES FROM PLACE TO PLACE.

MR. E THE MAGICIAN WANTS YOU TO WRITE DOWN ANY NUMBER CONSISTING OF THREE DIGITS SO THAT THE DIGITS WILL DECREASE BY ONE FROM LEFT TO RIGHT, AS 3 2 1.

THEN REVERSE THE ORDER OF THE DIGITS, GIVING 1, 2, 3 AND SUBTRACT.

HE CLAIMS THAT YOU WILL ALWAYS GET THE SAME RESULT, WHICH WILL BE 198.

TRY IT!

$$\begin{array}{r} 321 \\ 123 \\ \hline 198 \end{array}$$

WHAT 6 ANIMALS ARE SUGGESTED HERE?

ALL IN THIS MENAGERIE

ANSWER: 1, LION (LINE) 2, ELEPHANT (LE PANTS-5) 3, BADGER (BADGE R) 4, TIGER (THE GRR) 5, BEAR (BARE) 6, ANTELOPE (CANTALOPE -C)

THROUGH WHICH SQUARES WOULD YOU DRAW A STRAIGHT LINE TO SCORE THE HIGHEST POSSIBLE TOTAL? OUR LINE AS SHOWN SCORES 96.

10	9	13	6
7	20	11	19
15	14	18	16
17	5	8	12

DRAW A STRAIGHT LINE THROUGH 6, 19, 11, 20, 14, 15 AND 17 TO SCORE ONE HUNDRED AND TWO.

WHAT BODY OF WATER DO THESE 2 LETTERS SUGGEST?

P D

POUND (POND)

KIDS: DRAW IN MY DRESS.

TELL YOUR FRIEND THAT 6 AND 5 MAKES 9. IF HE DOESN'T BELIEVE IT, MARK DOWN SIX LINES, THEN ADD FIVE LINES LIKE THIS.

1	1	1	1	1	1	1	1	1	1	1	1
NINE											

ACROSS FROM THE TOP: 10, 3, 8, 5, 7, 9, 6, 11, 4.

MAKE EACH ROW ACROSS, DOWN AND DIAGONALLY ADD TO 21. WRITE THE GIVEN NUMBERS IN THE CORRECT SQUARES.

3	4	5	6	7	8	9	10	11
□	→	□	→	□	→	□	→	□
↓	↓	↓	↓	↓	↓	↓	↓	↓
□	→	□	→	□	→	□	→	□
↓	↓	↓	↓	↓	↓	↓	↓	↓
□	→	□	→	□	→	□	→	□

WHY IS A RAILROAD ENGINE LIKE A FAMILY WASH?

IN THE EMPTY BOXES, BELOW EACH GIVEN LETTER, PRINT IN THE LETTER THAT FOLLOWS IT, IN ALPHABETICAL ORDER.

YOU WILL THEN GET THE ANSWER TO THE ABOVE RIDDLE.

S	G	D	X	A	N	S	G	Q	T	M	N	M	K	H	M	D	R

Labrador West television programs

WEDNESDAY, SEPTEMBER 17

4:00 - HELLO CUBA
4:30 - LUNCHEON DATE
5:00 - TAKE THIRTY
5:30 - BOBINO
6:00 - LA BOITE
6:30 - THE ADVENTURES
OF TOM SAWYER
7:00 - ZOOM EN
LIBERTE
8:00 - CFL FOOTBALL
"Saskatchewan at Montreal"
11:00 - CBC NEWS

THURSDAY, SEPTEMBER 18

4:00 - THE EDGE OF
NIGHT
4:30 - LUNCHEON DATE
5:00 - TAKE THIRTY
Take Thirty visits a home for the
aged where the elderly can find a
new outlook on life....
5:30 - BOBINO
6:00 - LA BOITE
6:30 - ARTHUR & THE
SQUARE KNIGHTS OF
THE ROUND TABLE
7:00 - NFLD. NEWS
DIGEST
7:30 - THE NATURE
OF THINGS

Evolution depends on variation in
breeding which combines the
characteristics of different
strains of individuals. The
Nature of Things looks into the
advances that have evolved in
animal reproduction ...such as
from soft fish egg to hard-shelled
bird's egg...and hard-shelled egg
to placenta.

8:00 - TELESCOPE
Telescope visits with Lawrence
Durrell, playwright, novelist and
poet. In the small French town of
Sommeres, Durrell offers his
views on women, love...and his
latest novel, "Tunc", which has
created quite a stir among
critics. Fletcher Markle
introduces "Durrell by Himself."
8:30 - LA BOHEME
9:00 - LE TRAIN BLEU
S'ARRETE 13 FOIS
9:30 - THE NAME OF
THE GAME

Publisher Glenn Howard learns
that a colleague in Africa has
been kidnapped. Dropping
everything Howard rushes to the
dark continent to attempt the
dangerous rescue. Gene Barry is
featured with guest stars Shirley
Jones and Ossie Davis in the
Name of the Game adventure,
"The Third Choice."
11:00 - CBC NEWS

FRIDAY, SEPTEMBER 19

4:00 - THE EDGE OF
NIGHT
4:30 - LUNCHEON DATE
5:00 - TAKE THIRTY
Take Thirty concludes its series
on aging.
5:30 - BOBINO
6:00 - LA BOITE
6:30 - ARCHIE
7:00 - CHANSONS
Singers Pauline Julien and Raoul
Roy take a musical tour of St.
John's Newfoundland.
7:30 - THE GOOD GUYS
Bert takes over a lonely cabin in
the woods to get a rest...He
soon discovers he can't stand the
solitude, and is overjoyed...for a
while... when his friend Rufus
shows up to keep him company.
8:00 - COUP DE
SOLEIL
8:30 - QUELLE FAMILLE
9:00 - MISSION:
IMPOSSIBLE

Members of the Impossible
Missions Force find themselves
only a second away from
eternity...The IMF jeopardize

their lives in an attempt to
intercept a nitroglycerin expert
who is trying to provoke a war.

10:00 - DORIS DAY
SHOW
Doris discovers that four
children are more than a handful
for a 'volunteer' babysitter...
10:30 - THE LOST PEACE
The Lost Peace series looks at
the decline of British industrial
and Imperial power during the
1920's. This time of immense
industrial progress and change,
also produced the 'flappers',
stable prices and the Charleston.
11:00 - CBC NEWS
11:20 - LATE NIGHT
THEATRE
"Killers Loose."

SATURDAY, SEPTEMBER 20

2:30 - CANADA GAMES
3:30 - CANADA GAMES
5:00 - TOUR DE TERRE
5:30 - LASSIE
6:00 - GENTLE BEN
Gentle Ben enters the ring...not
the circus ring, but the wrestling
ring! And when the usually
friendly bear wins his first
match, he immediately becomes
the target for a get-rich-quick
scheme by a greedy carnival
owner.

6:30 - BELLE, SEBASTIEN
AND THE HORSES
7:00 - AUDUBON WILDLIFE
THEATRE
7:00 - AUDUBON WILDLIFE
THEATRE
"Return to Pelican Island."
7:30 - MISS PATRICIA
PRESENTS
8:00 - GREAT MOVIES
"Deep in My Heart" - Jose
Ferrer and Walter Pidgeon star in
the biography of composer
Sigmund Romberg. The film
chronicles his rise from a cafe
waiter in Vienna to international
fame as a composer of operettas
and musical comedies.
10:30 - LES COUCHE-
TARD
11:00 - CINEMA
Les Espions.

SUNDAY, SEPTEMBER 21

4:00 - MAN ALIVE
Sociologist Peter Berger talks
about the religious experience.
4:30 - M. SURPRISE
PRESENTE
5:00 - THE AERONAUTS
5:30 - GREEN ACRES
Oliver's chickadee, Lisa,
becomes the temporary mother
for 1,000 three-day old baby
chicks...Lisa's latent mother
instinct surfaces when the
brooder breaks down and she
realizes the baby chicks have to
be kept warm to survive.

ALL CLASSES
OF
INSURANCE
(except life)
GERALD NEARY
Representing
R.C. Anthony Insurance
PHONE
282-6617
after 5 p.m.
All Day Weekends.

6:00 - WALT DISNEY'S WONDERFUL WORLD OF COLOR

A second underwater death
almost scuttles the search for
"The Treasure of San Bosco
Reef". This makes every
surviving member of the diving
expedition a murder-suspect, in
the second half of this Walt
Disney mystery-adventure.

7:00 - THE ED
SULLIVAN SHOW
Singers Sergio Franchi and
Nancy Ames are among Ed
Sullivan's guests.

8:00 - AU PAYS DES
GEANTS
9:00 - BONANZA
The lives of the Cartwrights are
in jeopardy as they try to help a
small Army unit guard a payroll.
Problems increase when the
unit's captain is captured by a
gang of outlaws...in the
Bonanza drama, "Salute to
Yesterday."
10:00 - ROYALTY
SPECIAL

MONDAY, SEPTEMBER 22

4:00 - THE EDGE OF
NIGHT
4:30 - CANADA GAMES
5:00 - TAKE THIRTY
Author John Fisher talks about
a new trend in merchand-
ising...the direct-charge co-ops.
5:30 - BOBINO
6:00 - LA BOITE
6:30 - BIRDMAN AND
THE GALAXY
TRIO
7:00 - ALL AROUND
THE CIRCLE
Singer Evan Purchase and The
Signalmen are the special guests
on the summer variety show, All
Around the Circle.
7:30 - ONE MORE TIME
8:00 - A LA SECONDE
8:30 - LE PARADIS
TERRESTRE
9:00 - CAROL BURNETT
PRESENTS JIMMIE
RODGERS

Guest singer Joanie Sommers
talks about her career and joins
Jimmie Rodgers and company in
a song-and-dance production of
"We Got Us." And comedians
Skiles and Henderson do a
comedy routine illustrating that
"American Is...On The Move."

10:00 - IT'S OUR STUFF
Join the Good Company
playboys and their girls in their
own after-hours club, for a
swinging scene. Brian Russell
and the so-called psychedelic
dancers warm up the party with

a voodoo-rock number called
"Barefoot Lady."

10:30 - FIVE YEARS
IN THE LIFE:
The Cantwells of Newfoundland
are the subjects for the Five
Years in the Life cameras. Frank
Cantwell, the sixth generation in
his family to work as lighthouse
keeper at Cape Spear,
Newfoundland, retired recently
at age 66 and his eldest son
Gerry has now become the
lighthouse keeper.

11:00 - CBC NEWS

TUESDAY, SEPTEMBER 23

4:00 - THE EDGE OF
NIGHT
4:30 - CANADA GAMES
5:00 - TAKE THIRTY
Take Thirty visits Ottawa to
tour the nation's new National
Arts Centre.
5:30 - BOBINO

6:00 - LA BOITE

6:30 - ROCKET ROBIN
HOOD

7:00 - ABBOTT &
COSTELLO

7:30 - THE LIBERACE
SHOW

Comedienne Eve Arden and
singer Matt Monro are among
the guests of The Liberace
Show.

8:30 - RUE DES
PIGNONS

9:00 - MOI ET L'AUTRE

9:30 - THE NAME OF
THE GAME

An aging convict is forced into a
prison break...Dan Farrell races
against time to try and stop the
old man before he aids a
gangster in a multi-million-dollar
robbery.

11:00 - CBC NEWS

Round and About

For the convenience of
residents we have placed
boxes at Bowings, City
Drugs and Dominion Store
in Labrador City, and by
the bulletin Board in the
Shopping Center at Wabush,
in which you may deposit
any items that you wish to
have published in Aurora.
Engagements, Weddings,
Meetings, wanted to buy,
For Sale, Lost & Found
etc., are all published free.
This is your paper and we
want you to make use of it.

The Children are back to
school again and we could
not help but notice that all
motorists are not observing
the School Crossings. We
would like to point out that
pedestrians take precedence
over vehicle traffic at all
school and pedestrian
crossings. While two on
Hudson Drive are equipped
with traffic lights, the
several others around town
are quite plainly marked.

We might add that the
RCMP patrol these
crossings, so if you ignore
the law, you have yourself
to blame. Please be careful
and observe traffic signs,
"the child you save may be
your own".

Several issues past we
inquired about traffic
warning lights at the level
railway crossing on the
highway to Wabush. We
apologize to all concerned,
in that we were of the
opinion that the Chamber
of Commerce undertook to
have the lights installed.
Information now in our
hands indicates, that this
project was instigated by
the local improvement
districts of both towns. The
Provincial Department of
Highways have awarded the
contract for the installation
of the lights to Wabush
Mines and work is expected
to be completed before
winter.

WE NEED YOUR
HELP
TO GET NEWS
AND
SOCIAL ITEMS
Weddings, Meetings
Engagements, Births,
Personal Lost-Found
and For Sale
Are All Published
FREE
IN AURORA
PHONE
YOUR ITEMS TO
944-5268

ANNOUNCEMENT

THE ACTION FOR JOEY COMMITTEE
WISH TO ADVISE RESIDENTS OF
LABRADOR CITY AND WABUSH THAT
CAMPAIGN OFFICES ARE NOW OPEN.

IN WABUSH - ROOM NO. 2 (upstairs)
WABUSH RECREATION CENTER Phone
282-6726.

IN LABRADOR CITY - Trailer No. 110.

Labrador west radio programs

WEDNESDAY

- 5:00 - News and Weather
- 5:12 - Bright N'Early
- 6:00 - News
- 7:00 - World at Eight
- 7:35 - Fred Dobb's Show
- 8:15 - Bruno Gerussi
- 9:00 - Today Show
- 10:00 - News
- 10:03 - Matinee Part 1
- 10:45 - Canadian Short Stories
- 10:55 - Assignment
- 11:00 - News
- 11:03 - Regional Roundup
- 12:00 - News and Weather
- 12:15 - Afternoon
- 1:00 - News
- 1:03 - Open Road Show
- 1:55 - Assignment
- 2:00 - News
- 2:03 - Home Free
- 3:03 - Canadian Roundup
- 3:10 - Short Story Time
- 3:30 - Tempo
- 4:03 - Tempo
- 4:30 - Sportsworld and Assignment
- 4:40 - Regional Roundup
- 5:00 - World at Six
- 5:30 - Regional Roundup
- 6:03 - Sounds Easy

- 6:30 - Soundings
- 7:00 - News
- 7:03 - Concern
- 8:00 - News
- 8:03 - Ideasnetwork
- 9:00 - News from the Capitals
- 9:15 - Five Nights a Week
- 9:30 - Theatre 10:30
- 10:00 - News
- 10:03 - The Music Man
- 11:00 - News, Weather, Sports
- 11:15 - The Music Man

THURSDAY

- 5:00 - News and Weather
- 5:12 - Bright N'Early
- 6:00 - News
- 6:03 - Bright N'early
- 7:00 - World at eight
- 7:15 - Preview Commentary
- 7:20 - Bright N'Early
- 7:35 - Fred Dobb's Show
- 8:00 - News
- 8:10 - Rendez Vous
- 8:15 - Bruno Gerussi
- 8:55 - Assignment
- 9:00 - Today Show
- 9:55 - Assignment
- 10:00 - News
- 10:03 - Matinee Part 1
- 10:45 - Canadian Short stories
- 10:55 - Assignment
- 11:00 - News

- 11:03 - Regional Roundup
- 12:00 - News and weather
- 12:15 - Afternoon
- 12:55 - Assignment
- 1:00 - News
- 1:03 - Open Road Show
- 1:30 - Matinee Part 2
- 1:55 - Assignment
- 2:00 - News
- 2:03 - Home Free
- 2:55 - Assignment
- 3:00 - News
- 3:03 - Canadian Roundup
- 3:10 - Storytime
- 3:30 - Tempo
- 3:55 - Assignment
- 4:00 - News
- 4:03 - Tempo
- 4:30 - Sportsworld and Assignment
- 4:40 - Regional Roundup
- 4:55 - Assignment North
- 5:00 - World at Six
- 5:30 - Regional Roundup
- 5:55 - Rendez Vous
- 6:00 - News
- 6:03 - Sounds Easy
- 7:00 - News
- 7:03 - Bright Lights
- 8:00 - News
- 8:03 - Gilmour's Album
- 9:00 - News, From The Capitals
- 9:15 - Five nights a week
- 9:30 - Theatre 10:30
- 10:00 - News
- 10:03 - The Music Man
- 11:00 - News, Weather, sports
- 11:15 - The Music Man.

- 12:55 - Assignment
- 1:00 - News
- 1:03 - Open Road Show
- 1:30 - Matinee Part 2
- 1:55 - Assignment
- 2:00 - News
- 2:03 - Home Free
- 2:55 - Assignment
- 3:00 - News
- 3:03 - Canadian Roundup
- 3:10 - Storytime
- 3:30 - Tempo
- 3:55 - Assignment
- 4:00 - News
- 4:03 - Tempo
- 4:30 - Sportsworld, and Assignment
- 4:40 - Regional Roundup
- 4:55 - Assignment North
- 5:00 - World at Six
- 5:30 - Regional Roundup
- 5:55 - Rendez Vous
- 6:00 - News
- 6:03 - It's Debatable
- 7:00 - News
- 7:03 - Radio Free Friday
- 8:00 - News
- 8:03 - Radio Free Friday
- 9:00 - News from the Capitals
- 9:15 - Five nights a week
- 9:30 - Theatre 10:30
- 10:00 - News
- 10:03 - The Music Man
- 11:00 - News, Weather, Sports
- 11:15 - The Music Man.

- 4:03 - CBC Showcase
- 5:00 - News
- 5:03 - Funny You Should Say That
- 5:30 - Summer Switchboard
- 6:00 - News, Weather, Sports
- 7:30 - Holiday
- 8:00 - News
- 9:00 - News
- 9:03 - Something to Say
- 10:00 - News
- 10:10 - Weekend Sound of Sport
- 10:30 - Stars at Night.

MONDAY:

- 5:00 - News and Weather
- 5:12 - Bright and Early
- 6:00 - News
- 6:03 - Bright N'Early
- 7:00 - World at Eight
- 7:15 - Preview Commentary
- 7:20 - Bright N'Early
- 7:35 - Fred Dobb's Show
- 8:00 - News
- 8:15 - Bruno Gerussi
- 8:55 - Assignment
- 9:00 - Today Show
- 10:03 - Matinee Part 1
- 10:45 - Canadian Short Stories
- 10:55 - Assignment
- 11:03 - Regional Roundup
- 12:00 - News and Weather
- 1:00 - News
- 1:03 - Open Road Show
- 1:30 - Matinee Part 2
- 1:55 - Assignment
- 2:00 - News
- 2:03 - Home Free
- 2:55 - Assignment
- 3:00 - News
- 3:03 - Canadian Roundup
- 3:10 - Calling All Children
- 3:30 - Tempo
- 4:00 - News
- 4:03 - Tempo
- 4:30 - Sportsworld & Assignment
- 4:40 - Regional Roundup
- 5:00 - World at Six
- 5:30 - Regional Roundup
- 5:55 - Rendez-Vous
- 6:00 - News
- 6:03 - Sounds Easy
- 6:30 - Playback
- 7:00 - News
- 7:03 - As it Happens
- 8:03 - As it happens
- 9:00 - News from the Capitals
- 9:15 - Five Nights a week
- 9:30 - Theatre 10:30
- 10:03 - The Music Man
- 11:00 - News, Weather, Sports
- 11:15 - The Music Man.

SATURDAY

- 5:00 - News
- 5:03 - Weekend Show
- 6:00 - News
- 6:03 - Weekend Show
- 7:00 - News, Weather
- 7:15 - Sports Scene
- 8:00 - News
- 8:10 - Regional Roundup
- 8:15 - Alarm Clock
- 9:00 - News
- 9:03 - Action Set - Part 1
- 10:00 - News
- 11:03 - Regional Roundup
- 11:30 - Sports Roundup
- 12:00 - News, Weather

SUNDAY

- 6:00 - News
- 6:03 - Music in the Air
- 7:03 - Canadian Stars
- 7:30 - Sateline London
- 8:00 - News
- 8:05 - Voice of the Pioneers
- 8:30 - Maritime Gardner
- 8:45 - Neighborly News
- 9:03 - Sunday Magazine
- 10:00 - News
- 10:03 - Sunday Supplement
- 11:03 - Regional Round-up
- 12:00 - BBC News
- 12:10 - Capital Report
- 1:00 - Dots News
- 1:10 - Continental Phapsody
- 1:30 - Songs of Faith
- 2:00 - News
- 2:03 - CBC Stage
- 3:03 - Concert Hall
- 4:00 - News

TUESDAY:

- 5:12 - Bright N'Early
- 6:00 - News
- 6:03 - Bright N'Early
- 7:00 - World at Eight
- 7:20 - Bright N'Early
- 7:35 - Fred Dobb's Show
- 8:10 - Rendez Vous
- 8:15 - Bruno Gerussi
- 8:55 - Assignment
- 9:00 - Today Show
- 10:00 - News
- 10:03 - Matinee Part 1
- 10:45 - Canadian Short Stories
- 10:55 - Assignment
- 11:03 - Regional Roundup
- 12:00 - News, Weather and Sports
- 12:15 - Afternoon
- 1:03 - Calling All Children
- 1:55 - Assignment
- 2:00 - News
- 2:03 - Home Free
- 2:55 - Assignment
- 3:00 - News
- 3:03 - Canadian Roundup
- 3:10 - Storytime
- 3:30 - Tempo
- 3:55 - Assignment
- 4:00 - News
- 4:03 - Tempo
- 4:30 - Sportsworld & Assign.
- 4:40 - Regional Roundup
- 4:55 - Assignment North
- 5:00 - World at Six
- 5:30 - Regional Roundup
- 5:55 - Rendez Vous
- 6:03 - Sounds Easy
- 7:00 - Between Ourselves
- 8:00 - News
- 8:03 - Folk Sounds
- 9:00 - News from the Capitals
- 9:15 - Five Nights a Week
- 9:30 - Theatre 10:30
- 10:03 - Music Man
- 11:00 - News, weather and sports

Round and About

A word of advice to some local organizations; We feel you would have greater success in acquiring finances for your protection from the business section of the towns, if in turn when you have purchases to make for that particular group that you would patronize local business, they are the ones who support you.

C. Crosbie and Premier Smallwood, have officially opened offices in Labrador City and Wabush, the campaign in the area seems to be well underway, we have no way of verifying this as it seems that the public relations people for both gentlemen need a gentle nudge, if not a shot in the arm.



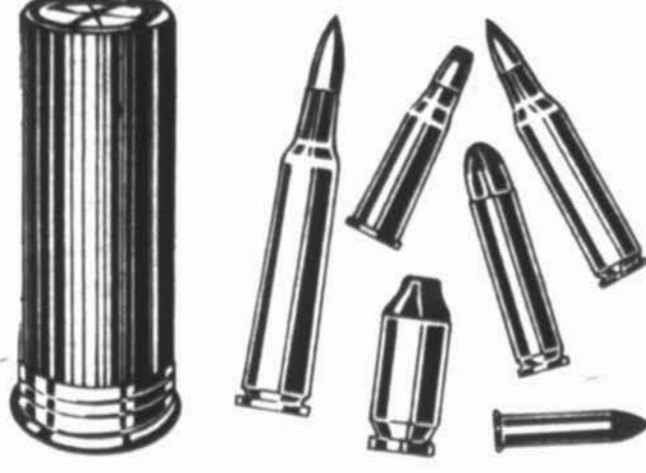
We should see quite a bit of activity in political circles this week, both declared candidates for the Liberal leadership, Mr. John

All indications show that Ambrose Peddle will be visiting this area a lot more, especially after the reception at the Airport and Hotel, last Thursday night.

FRIDAY

- 5:00 - News and Weather
- 5:12 - Bright N'Early
- 6:00 - News
- 6:03 - Bright N'Early
- 7:00 - World at Eight
- 7:15 - Preview Commentary
- 7:20 - Bright N'Early
- 7:35 - Fred Dobb's Show
- 8:00 - News
- 8:10 - Rendez vous
- 8:15 - Bruno Gerussi
- 8:55 - Assignment
- 9:00 - Today Show
- 9:55 - Assignment
- 10:00 - News
- 10:03 - Matinee Part 1
- 10:45 - Canadian Short Stories
- 10:55 - Assignment
- 11:00 - News
- 11:03 - Regional Roundup
- 12:00 - News and Weather
- 12:15 - Afternoon

IT'S THE HUNTING SEASON

SHELLS

EVERYTHING FOR THE HUNTER
COEY, WINCHESTER - RIFLES
AND SHOTGUNS - FROM
\$29.95

C.I.L. AMMUNITION - GUN CASES
AND DECOYS

AT

HANDY ANDY

PHONE
944-5141

SHOPPING CENTER
LABRADOR CITY

ALL OF YOUR INSURANCE CLASSES

For ALL YOUR INSURANCE REQUIREMENTS

Phone
Ron Tapper
944-2758

representing
TOMLINSON'S INSURANCE

for all LABRADOR WEST

this week in ASTROLOGY

BY CARL PAYNE TOBEY
ILLUSTRATED BY DEGRAZIA



STRANGE DEATH OF DE SOTO

Hernando de Soto had been told by an astrologer (possibly the "Morning Star of Italy") that he would not live longer than Vasco Nunez de Balboa, who was executed at the age of 42. Reaching the age of 42, de Soto was seized with a raging fever while in the wilderness and died.

FUTURE



TOBEY'S PREDICTION:

This could be a radical week before it is over. The sex factor can get out of hand. There can be increased irritability. People are more daring, reckless, accident-prone, and even violent. Travel could be dangerous. Best to play the whole week cool and avoid the crowds. It can be discordant for close or intimate relationships like marriage or romance. Triangles can develop.

© 1969 by NEA, Inc.

PRESENT

THE VIRGO PLAYBOY

He is very proper and likes to follow the accepted design of society in what he wears or does. However, what was proper yesterday is no longer proper today. He might have his hair down around his shoulders by now, depending on the group with which he associates. He is generally thrifty rather than extravagant.



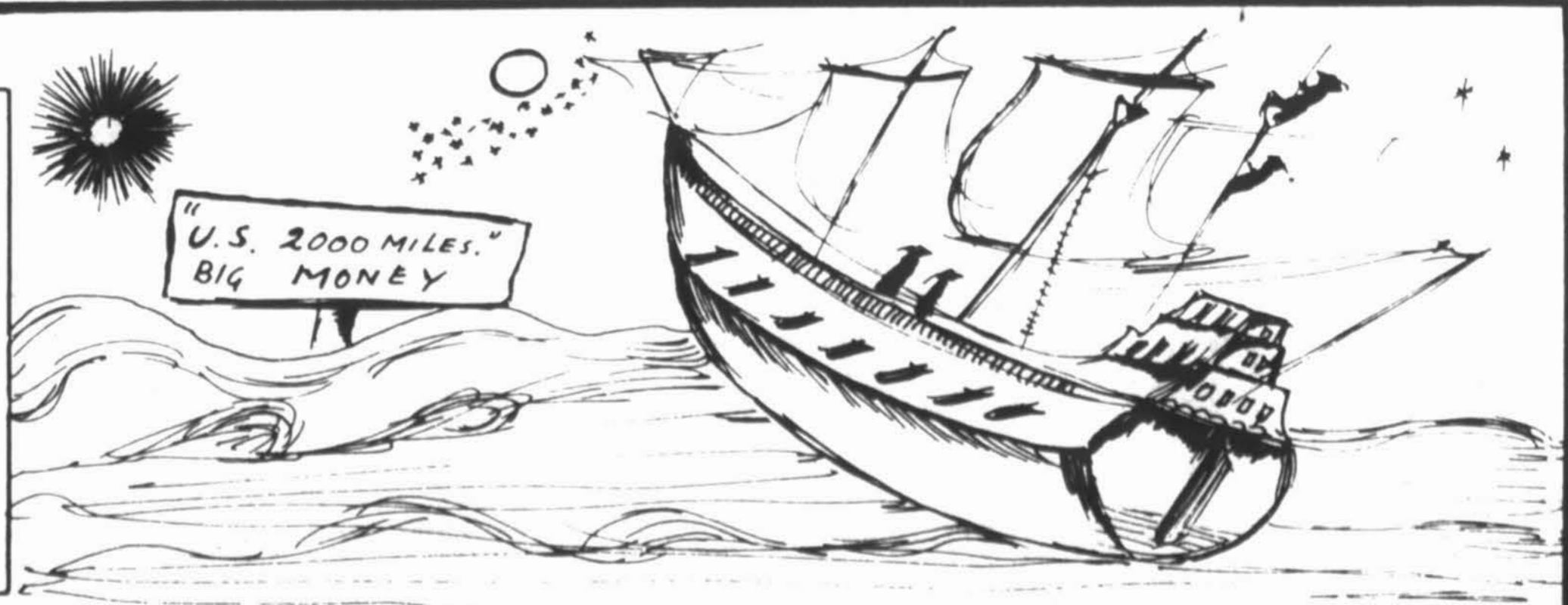
YOUR WEEK AHEAD

- ARIES** Mar. 21-Apr. 19
An active week with some hazards, but breaks can be in your favor if you are cautious.
- TAURUS** Apr. 20-May 20
Although you can be on the upgrade, this is an unstable week and some adjustments are ahead.
- GEMINI** May 21-Jun. 21
Watch your step. There are some explosive tendencies, particularly in your personal relationships.
- CANCER** Jun. 22-Jul. 22
Don't throw away anything that forms a part of your security. Best not to make any radical changes.
- LEO** Jul. 23-Aug. 22
Avoid being too sure of yourself. Take your time and think things over carefully before you leap.
- VIRGO** Aug. 23-Sep. 22
A radical week when things can take an unexpected turn. The emotional elements can get out of hand.

- LIBRA** Sep. 23-Oct. 22
Doubtful for romance. Keep your sense of balance. Avoid too risqué actions. Don't flout conventions.
- SCORPIO** Oct. 23-Nov. 21
Overly impulsive. You may feel like boiling over. Accident prone. The sex factor can be troublesome.
- SAGITTARIUS** Nov. 22-Dec. 21
An uncertain week. Keep your cool and don't be too outspoken or you can toss everything off balance.
- CAPRICORN** Dec. 22-Jan. 19
You may feel like breaking out of your shell. Don't risk blowing up any gains you have already made.
- AQUARIUS** Jan. 20-Feb. 18
There are separative indications. You may feel like exploding. You can be irritable within yourself.
- PISCES** Feb. 19-Mar. 20
Don't take unnecessary chances. Emotionalism runs high. You may feel like some unconventional action.

FOREIGN TALENT

Considerable delay accompanied launching the early space program of the United States. A national newspaper investigated. Out of 900 professional astronomers in the U.S., it had been impossible to find six who could teach celestial mechanics to the engineers of aircraft and missile companies, one of which wanted to hire 11 astronomers at \$100 a day. The first astronomer to qualify was a woman. They then imported the necessary talent from overseas.





OPEN HOUSE

EVERYONE WELCOME • AMPLE FREE PARKING

YOU ARE CORDIALLY INVITED
TO ATTEND THE
PREMIER SHOWING
OF THE
NEW and DIFFERENT
GENERAL MOTORS MODELS FOR 1970
AT
CITY MOTORS SHOWROOMS

COMMENCING AT 9:00 A.M.

THURSDAY , SEPTEMBER 18th

DURING THIS GALA SHOWING
EXTRA SPECIAL DEALS WILL BE GIVEN
ON THE FEW REMAINING '69 MODELS IN STOCK.



CITY MOTORS (LABRADOR) LTD.