

MERIT INSURANCE COMPANY
 All Canadian
 Coast to Coast
 DEPENDABLE PROTECTION
 • Complete Coverage
 • Low Rates
 • Fast Fair, Friendly Claim Service
 Our Policy is your Protection
 Labrador Representative
GORDON MANSTAN
 768 Stirling Crescent
 944-3301

AUTO **FIRE**

The Aurora

The weekly newspaper of Labrador West

AURORA, LABRADOR, SEPTEMBER 9, 1970

Vol. 2 No. 23

PRICE 10 CENTS



The Ashuanipi Braves, League Champs, Senior Softball "A", 1970



Handy-Caps, League Champs, Ladies softball 1970. To the left is coach Eddie Hong and on the right is League President P. K. Ring - (See "Speaking of Sports" for run - down on latest Labrador athletic news).

CANADA CHOICERED BRAND BEEF—FULL SLICE BONELESS

ROUND STEAK

or
TENDER, JUICY

RUMP ROAST

SPECIALI

.19 LB.



Boeuf Canada de choix—De Marque Rouge

BIFTECK de RONDE Tranche complete desossée ou
ROTI de GROUPE Tendre et Juteux

Canada choice —Red Brand Beef-Steak or Roast tender **\$1.39** lb.

SIRLOIN POINT

Bifteck ou Roti-Pointe de Surlonge—Boeuf de marque rouge

Fresh Every Hour!
GROUND ROUND STEAK lb. **99^c**

Bifteck de Ronde-Frais hache a chaque Heure

Jubilee Brand!
RINDLESS BACON Pqt. 1 lb. Pkg. **83^c**

Bacon Sans Couenne-Marque Jubilee

Salada Orange Pekoe
TEA BAGS
The en Sacs **83^c** Pqt. de 60's
Salada Orange Pekoe

Kellogg's
CORN FLAKES
Flocons de Mais de Kellogg's **43^c** Pqt. 16 oz. Pkg.

Scotian Fold-Assorted
FRUIT DRINKS 2 Btes 48 oz. Tins **85^c**

Brevages aux Fruits—Scotian Gold

For Sandwiches
KAM LUNCHEON MEAT Bte 12 oz. tin **55^c**

Pain de Viande Kam-Pour Sandwiches

York Frozen
MEAT POT PIES 3 Pates 8 oz Pies **\$1.00**

Pates a la Viande-Congeles-York

McCain Frozen
SHOESTRING POTATOES Pqt 2 lb. Pkg. **59^c**

Patates Frites Juliennes—Congelees McCain

Domino
CHOICE TOMATOES **29^c**
Tomates de Choix Bte 19 oz tin

Scope
MOUTHWASH
Rince-Bouche Scope **\$1.23**
Bout 17 oz. Btle.

Maple Leaf Brand
BREAKFAST SAUSAGES **59^c** lb.
Saucisses a Dejeuner—Maple Leaf

Maple Leaf Brand Sliced Chicken or
MEAT & OLIVE LOAF Pqt. 6 oz. Pkg. **33^c**
Pain de Viande et Olive ou Poulet-Maple Leaf

ALWAYS FRESH FRUIT & VEGETABLES
FRUITS et LEGUMES TOUJOURS FRAIS

BARTLETT PEARS
POIRES Bartlett
From California U.S. Canada No. 1 De la Californie E.U. Canada No. 1—Sucrees et Juteuses **39^c** lb.

From Arizona U.S. — 138's
SUNKIST ORANGES Douz Doz. **79^c**
Oranges Sunkist—De L'Arizona—Grosueur 138

Quebec Grown-Canada No. 1
PASCAL CELERY 24's ch. ea. **33^c**
Celeri Pascal Grosueur 24-Du Quebec

Quebec Grown-Canada No. 1
GELLO CARROTS 5 lb. **59^c**
Carottes en Botte—Du Quebec Canada No. 1

We reserve the right to limit Quantites
Nous nous reservons le droit de limiter les Quantites
Prix en vigueur jusqu'a la fermeture Sam. 12 Sept. 1970
Prices effective until closing Sat. Sept. 12th, 1970
DOMINION STORES LIMITED

●CENTRE D'ACHATS CAROL LAKE
SHOPPING CENTRE, LABRADOR CITY
et-and ●WABUSH PLAZA, LABRADOR



On the local scene

Last weekend saw what was probably the busiest period at Wabush terminal in two or three years and with work at Mount Wright underway we can expect to have a further increase in the number of passengers thru the area. The terminal was constructed in the "turpoprop age" for planes carrying 40-45 passengers. The facility is not adequate for the "jet age." Several years ago D.O.T. opened a beautiful new terminal at Bagotville (Saguenay, P.Q.) which we understand, handles about the same amount of traffic in a week as our terminal would process on an average Friday. How about it Mr. Peddle, will you see if you can get some action from D.O.T.? With expansion underway in the area we definitely require a larger, permanent airport terminal.

The Labrador City Playground was closed for the season on Monday past in order to carry out extensive lawn repairs. Parents and kiddies are asked to co-operate during this period of improvements.

In spite of a comparatively extensive housing programs in the area this year accommodations are the "tightest" in some time. It seems the only way to alleviate this would be through the erection, in both towns, of a large apartment building, or buildings, for the exclusive use of school teachers.

Understand from the Municipal authorities in Labrador City that widening of the shoulders on the road entrance to Labrador City will provide wider snow clearing this winter and enable drivers to use the full pavement width.

Well, the announcement finally came on the Mount Wright Road. However details as to cost, starting date, etc. were not released. Aurora will comment further on the subject in a subsequent issue.

Tuesday, September 8, was the Fourth Anniversary of the last Provincial election and it now seems the various groups and parties are all preparing for a fall "visit to the polls." Only once before, since Confederation, has the Provincial Government gone longer before calling a general election. There are still some "experts" who maintain the present administration will wait until next year before going to the people. However Premier Smallwood will be 70 years old in December and the majority of those close to the political scene feel an election will be held before he reaches "three score and ten." On the local scene, Aurora understands that both the Liberals and P.C.'s will be holding nominating conventions during October, so we will have at least three candidates in the field if an election is called this year.

NOTICE: A number of cat deaths in Labrador City have been diagnosed by Dr. Pellerin as "Feline Distemper"; this is contagious and could be fatal. Owners wishing to protect their cats are notified that there will be a Vaccine or Vaccine Booster inoculation on September 20. For further information call 944-2039, 944-5621, or 944-5327. In the meantime should any cats show symptoms of illness please contact the above numbers.

HUMANITIES ASSOCIATION TO BE INITIATED

The Humanities Association of Canada is interested in forming its first branch in Labrador. The Association serves the community where it exists by making available speakers who ordinarily would not be available for a talk. Dr. J.C. Hammer, Maritime and Eastern Co-ordination of the Association has asked Mr. Jim Dunn to start a branch of the Association here in Labrador West. Mr. Dunn is well known to the community

for his Social Studies work at Labrador City Collegiate and his role as General Chairman for the Social Studies Report published last year which is being implemented in the Labrador West Schools in the next two years. Mr. Dunn said that the need now is to find out how much support there would be in the Labrador West Area for such an Association. Mr. Dunn stressed that the Association is

for all the community and that speakers would be brought in on different evenings so that any person could attend a majority of the talks if he so wished. Mr. Dunn outlined the speakers that would be available in the first year if enough support was found in Labrador West: Dr. J.C. Hammer, "The Creative Writer and the State"; Dr. T. Marcus, "Recent Theories on the Origins of Life"; Dr. J. Sandys-Wunsch, "The Dead Sea Scrolls"; Dr. V. Renner, "The Personality of the Creative Artist"; Dr. K. Roberts, "The Bubonic Plague"; Dr. M. Langford, "Marxism and Christianity"; Dr. R. Warner,

"The Emerging Quest for Quality in Life as reflected in Environment."

If anyone is interested in seeing such an Association started in Labrador West, they are asked to phone in the coming week to signify such: 944-5139. Any teachers interested are asked to sign up in their respective schools. The only expense to members would be a five dollar membership fee. A meeting of interested people will take place when the first speaker comes but it is vital to know community support before this can be arranged.



Senior Softball League President Gord Manstan (center) presents the League Trophy (Mussens) to Orv Matthews, captain and coach of the winning Ashuanipi Braves. To the left is Treasurer Charlie Stephens.

NOTICE

ALL VEHICLE OPERATORS

It is an offense under the Highway Traffic Act for any vehicle to pass a SCHOOL BUS while the red signal lights are operative.

LOCAL IMPROVEMENT DISTRICT LABRADOR CITY

CAROL PAINTING LTD.
PAINTING CONTRACTOR
DOMESTIC AND
INDUSTRIAL PAINTING

REASONABLE
 PRICES
 5 MAPLE
 CRESCENT
 APARTMENTS
 PHONE 944-5551



PHONE
 TODAY
 FOR FREE
 ESTIMATE

PHONE 944-5551



The Aurora

Published every Wednesday at Labrador West, Newfoundland and Labrador and printed by Robinson-Blackmore Printing and Publishing Limited, O'Leary Avenue, St. John's, Newfoundland. Subscription rate Canada and Foreign \$6.50. Mailing address, P.O. Box 2090, Labrador City.

Editorially speaking

Well here we are in early September, school has re-opened, and our short autumn has begun. During the next several months we will be called upon to make our annual contributions to various charities. Certainly we agree that these are quite worthy, legitimate and almost vital. However Aurora believes charity begins at home.

Some five-six years ago we discussed the advantages of a "Red Feather Drive" and a local Community Chest. However one of the main charities refused to join other groups and the idea was abandoned. Since then Labrador City-Wabush have more than doubled in population and correspondingly the number of appeals to the public have increased.

I'm sure the majority of business and individuals would certainly prefer to be called on once a year to give to a Community Chest, rather than 5 or 10 calls annually for donations, however worthy. Our suggestion: have the major charities get together and work out a satisfactory sharing plan. Further, that at least 25% of monies collected be retained for direct use in this area. We have heard recently of several cases locally where residents, through illness and injury, have been forced to sell personal effects in order to "make ends meet." Sending \$34,000.00 to St. John's for a specific charitable organization is certainly not helping these people.

So how about it local campaign chairmen (or chairwomen), do you believe charity begins at home?

While we were certainly not inundated by the response to our editorial on Newfoundland and Labrador we did discover that the support for this designation was practically nil.

Our winner was a "write-in": Mr. J.L. Citizen, Labrador City, Labrador. The runner up: Mr. J.L. Citizen, Wabush, Labrador, Newfoundland. Because of the small number of preferences received, we feel the above is rather inconclusive. However it seems Newfoundland and Labrador does not appeal to many of our readers.

Results of NTA executive meeting

The Newfoundland Teachers' Association recently concluded a two-day executive meeting at St. John's. The Executive agreed in principle that the NTA will undertake to initiate COLLECTIVE BARGAINING LEGISLATION on behalf of its members. Included in this contemplated Collective Bargaining will be the following principles:

(a). The legislative description of the scope of bargaining should be as broad as possible.

(b). Movement of one step to another in Collective Bargaining negotiations should be at the request of either party.

(c). The NTA should be the bargaining agent province-wide and NTA branches the bargaining units at the local level.

(d). The NTA should bargain for all teachers, including superintendents.

(e). Working conditions and fringe benefits already covered by provincial statute should be left there, with some possible exceptions.

(f). Procedures for settlement of contract observance disputes and grievances must be included in the legislation.

(g). Legislation should specify the effective date of an agreement, the expiry date, the notice and procedures for negotiation of a new or modified agreement, provision for continuation of agreement if no notice is served by either side and conditions under which the agreement may be modified before its expiry.

Executive members of the NTA and Legislation Committee members will attend the September meetings of branches to assist in the branch discussions of the Collective Bargaining process.

At the October branch meetings elections will be held to choose the Newfoundland Teachers' Association as the bargaining agent for all teachers in the province regardless of professional grade level.

Here 'n' There

NFLD. WORKERS FOR SUDBURY: The first group of 24 Newfoundland recruits left St. John's last month to take up employment with the International Nickle Co. of Canada at Sudbury, Ontario. The company was looking for 300 workers in the Atlantic provinces. An Inco recruitment officer interviewed several hundred applicants in St. John's at the Canada Manpower Centre and then went to Corner Brook for the same purpose. The officer said the company's decision to seek Newfoundland workers was influenced by a similar drive in 1966 during which 214 were hired, half of who are still on the payroll.

NOVA SCOTIA -- QUEBEC EGG BATTLE: Nova Scotia Provincial Secretary E.D. Haliburton says the Quebec Egg Marketing Board has circumvented restricted trade provisions of the British North America Act to cut off Nova Scotian and other outside egg producers. In an interview he suggested "putting teeth into our Nova Scotia Chicken Marketing Board which would keep Quebec broilers out. "Let's take a leaf out of the Quebec book and do to them what they are doing to us."

KITCHEN COMPUTER: A U.S. company has developed a kitchen computer for housewives. Priced at \$10,600.00, it comes complete with a two week course in computer programming. The computer will tackle such homemaking problems as menu planning, home budgeting and income tax computation. Features include a sturdy, high-styled fibre glass pedestal, cover and key-board area.

LAY OFF AT BOWATERS: For the past week over 1,300 employees of Bowaters Nfld. were laid off, as the mill at Corner Brook closed down operations. The closure was due to a softening of the markets in the United States and a high inventory on hand. Bowater plants in Liverpool, N.S. and Tennessee were also closed during this period.

BANK RATINGS: The American Banker's annual compilation of the largest banks in the world in terms of deposits showed that the Canadian Big Five were all in the top Fifty.

STELCO WINS BIG ORDER: A Canadian steel company has won a multimillion-dollar pipe-line contract in the U.S. Steel Co., of Canada, biggest Canadian producer of large-diameter pipe for oil and gas transmission lines, has been awarded a hefty contract by Explorers Pipeline Co., Tulsa, Okla. The supply contract will form part of Explorers' 1,300 mile petroleum products pipeline to run from the Louisiana-Texas Gulf coast area to the Illinois-Indiana area. It will involve substantial deliveries of both 28" and 24" diameter pipe. An independent steel authority put a \$15 million - \$17 million price tag on the contract. The U.S. order will maintain capacity production at Stelco's Welland, Ont., pipe mill through the balance of 1970. The contract resulted from a Stelco bid that Explorers deemed "competitive in price and quality and in keeping with the best industry practices." The pipe will be fashioned from skelp (steel plate) made at Stelco's Hamilton works.

HAPPY DAYS: For the Canadian Union of Public Employees, happiness is a broken wage guideline. "The highest labor rate for municipal workers in Canada has been achieved in Oshawa, Ont., in a guideline-shattering settlement" it announces. Municipal workers will get an 18% wage increase over two years, a settlement which Mr. G. Levine, CUPE's research director, says "exposes the inequities of unilaterally-imposed federal wage guidelines." As of next April, the starting rate for a manual laborer in Oshawa will be \$3.91 an hour.

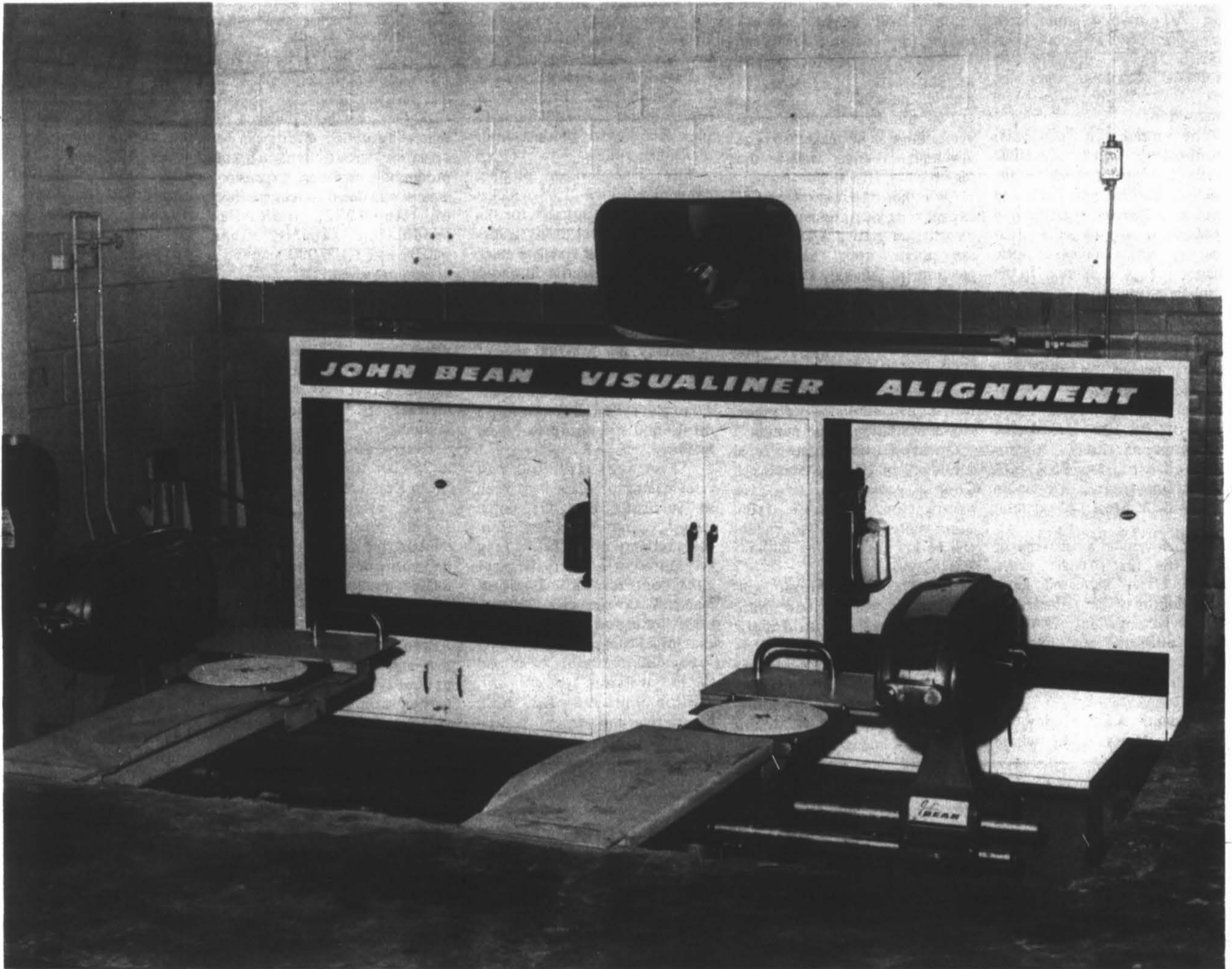
OTTAWA vs LONDON: Aviation authorities in Ottawa and London could end up exchanging a few

frosty phrases before the Heath government finds some way of keeping one of its election promises. Before the June election the Tories promised a better break for private enterprise in commercial aviation. The result is a merger of the two biggest privately owned British carriers, Caledonian Airways and British United Airways. Next step? Find the new firm some money-making routes. And that's where Canada could come in: the British may want to let the new carrier "double track" over the Atlantic with the publicly owned British Overseas Airways Corp. Ottawa's likely reaction? Nothing doing, Air Canada is having it rough enough as it is. To Ottawa's embarrassment, however, there's a precedent for just such demands. In 1962, the Diefenbaker government designated Canadian Pacific Airline to double-track with Trans-Canada Airlines (now Air Canada). The scheme was all set and CP Air's adds were running, until the British hit the roof because they had not agreed to the deal. Both sides may soon find themselves marshaling the very same arguments they heard from the other side eight years ago.

"NO-FAULT" AUTO INSURANCE: Maybe it just hasn't been enthusiastically sold or thoroughly explained, but motorists don't seem to share the enthusiasm that some provincial governments have for that so-called "no-fault" auto insurance. The no-fault principle is the one by which the policyholder can claim limited amounts for personal injury without first proving that the other driver was to blame for the accident. Saskatchewan and British Columbia already include no-fault benefits in their compulsory auto-insurance schemes, and Ontario plans this fall to introduce a law making no-fault coverage compulsory. But this benefit, available as an option in most provinces since January, 1969, has been greeted by motorists with something less than universal hurrahs. Although the extra cost averages only about \$8.00, only 70% of drivers have opted for it.

INTRODUCING TO WESTERN LABRADOR

AT CAMPBELL'S ESSO SERVICE JOHN BEAN VISUALINER ALIGNMENT



HOW LONG IS THIS LINE? — 1/2 INCH

A WHEEL THAT MUCH OUT OF ALIGNMENT WILL SCRUB SIDEWAYS 87 FEET IN EVERY MILE.

HOW LONG SINCE YOU CHECKED YOUR CAR WHEELS? The best insurance against bad

tire wear, vibration and shimmy is to check wheel alignment every 5,000 miles.

The John Bean Visualiner checks and corrects fast. COME IN FOR A VISUALINER CHECK—UP.



CAMPBELL'S ESSO SERVICE

"WHERE THE CUSTOMER COUNTS"

Free of labor woes, iron mines may now set a record

With no labor difficulties on the horizon for the next 35 months, Canada's iron ore producers are predicting production records this year.

Shipments should climb over the 50 million ton level, surpassing 1968's record 47.4 million tons - provided the economic slowdown does not cut too deeply into steel production.

The need to replenish stockpiles, which dwindled during last year's strike in the Quebec-Labrador iron fields and were kept low by capacity mill production during the first quarter, means there is little chance of a reduction in the immediate future.

Prices are even less likely to fluctuate because most mines are partially (and in some cases totally) owned by the steel companies themselves.

Steel Co. of Canada meets 95% of its ore and pellet requirements itself, Algoma Steel Corp. is 75%-80% self-sufficient, and Dominion Foundries & Steel Ltd. at least 65%.

Last November's price-rise of 5½%, the first in eight years, should offset increased labor costs and may be reflected in higher earnings in 1970. A recent price for 60% iron ore pellets in the lower Lake Erie area was 26.6c per gross ton iron unit.

President A.L. Fairley of Hollinger Mines Ltd., whose

subsidiaries have leased the ore fields along the Quebec-Labrador border to Iron Ore Co. of Canada (IOC), predicts record production from the region in 1970.

"IOC will produce 20-21 million tons of iron ore this year, 10 million tons of which will be in the form of pre-reduced pellets," he says.

For the first time in some years, there is no major iron ore development under way in the region.

"Whether the Iron Ore Co. expands its operations depends directly on getting a favourable tax policy from the federal government," Fairley says.

"A major contract with Japanese steel producers is pending, but neither side is prepared to finalize the agreement until it is clear whether the federal government will implement its white paper recommendations on mining,"

Quebec Cartier Mining Co., a subsidiary of United States Steel Corp., estimates that its production of 66% iron concentrates from the region will be in excess of nine million tons this year.

In 1971, the company will begin a five-year contract with Japanese steel producers involving the shipment of 1.5 million tons of concentrates. The company is nearing completion of a feasibility study on a new property at Mount Wright, 75 miles north of the

existing facilities at Gagnon, Que.

Completion of superport facilities at Sept Isles and Port Cartier, Que., permits loading of ore carriers of up to 200,000 tons. Several large cargos have already been shipped to markets in Western Europe and Japan.

Both International Nickel Co. of Canada and Falconbridge Nickel Mines Ltd. are adding to their facilities for production of nickel-iron pellets.

The Falconbridge product containing 1.4%-1.6% nickel and 90% iron is suitable for the making of nickel-bearing grades of alloy steel and stainless steel, particularly in electric furnaces. The company's new \$35 million refinery is expected to start operation this fall.

Initially, the 500,000 tons of pyrrhotite concentrate required annually will come from the company's Strathcona mine-mill complex near Sudbury.

"The results of our steel-making program have been so successful that the initial annual output of pellets from our refinery has been fully committed even before the plant goes on stream," President Marsh A. Cooper says. "We are now working on plans to double that initial capacity."

Falconbridge hopes to extend the life of its iron ore subsidiary, Wesfrob Mines Ltd., Tasu, B.C., by starting underground as well as open-pit operations. Wesfrob

has a long-term contract for sale of one million tons of iron concentrates yearly to the Japanese steel producer, Mitsubishi Shoji Kaisha. The ore is being shipped in equal quantities of pellet and sinter feed.

Further work on the International Nickel Co.'s iron ore recovery plant at Copper Cliff, Ont., has been deferred so that construction efforts can be concentrated on nickel production facilities. Expansion is now scheduled for completion in late 1972, increasing production capacity from 900,000 to 1,100,000 long tons of iron ore a year.

Steep Rock Iron Mines Ltd., located in Northwestern Ontario, expects pellet shipments in 1970 to be in the range of 1.4 million tons and estimates that price-hikers should increase its revenues by \$1 million.

Reserve potential is estimated at 259,000 tons of pellets in the Steep Rock area.

The company's Lake St. Joseph property is estimated to contain the largest reserves of pelletizing ore in Ontario - 160 million tons to a depth of only 500 feet. Although large-scale development of the Lake St. Joseph property is not likely in the immediate future, it will probably eventually involve participation by Stelco Dofasco.

Dofasco expects to use a record 2½ million tons of pellets in its operations this year. Of this supply, 40% will come from the Sherman mine at Temagami, Ont., which is 90% company-owned. Stelco estimates its iron ore requirements for 1970 at 4.75

million tons, of which 85% will be in pellet form.

A large part of Stelco's needs will be met by 26%-owned Wabush Mines in Labrador. Other participants in this mining and refinery complex are Dofasco with 16.4% and six U.S. and European steelmakers. Production is rated at six million tons per annum.

Stelco has a 50% interest in the Hilton Mine, located 40 miles northwest of Ottawa, which produces 600,000 tons of high-grade iron ore pellets annually. Another major source is the Griffith Mine and pelletizing operation in Northwestern Ontario. Production reached a commercial level of 1.5 million tons of pellets in 1969.

Additional iron ore supplies are purchased from the Minnesota-based Erie Mining Co., in which Stelco has a 10% interest.

A.J. Harris, vice-president, manufacturing, says 75% of Stelco's ore requirements are met by Canadian sources, although this percentage may increase as the company expands its Labrador operations.

Don't look for any big price increases on the world market during the coming year. Global reserves of 250,000 million tons are more than adequate to satisfy world demand in the foreseeable future. In addition, construction of fleets of ore carriers and improvements in loading facilities have resulted in a marked reduction in freight costs.

-(Reprinted from the Financial Post).



Coming to the O'BRIEN HALL. Nightly 7 thru 13 Sept.

"THE SECOND TIME AROUND"

Admission \$1.00 per person. Fri. - Sat. \$1.50 per person.

Phone
282-6877
or
282-6632

WESTLAB

FOR ALL YOUR
FAVOURITE BEERS

India - Black Horse - Labatt 50
Molson's Export - Dominion
Blue Star - O'Keefe
Molson's Canadian

Home Delivery Service:
Monday to Saturday 1 p.m.
to 9 p.m.

Warehouse Pick-up Service:
Monday to Saturday 9 a.m.
to 9 p.m.

We have recently installed
Cooler Service permitting us
to provide our customers
with chilled beer at all times.



Telephone orders taken
Monday to Saturday 9 a.m. to
9 p.m.

282-6877 or 282-6632

Coming: tires corded by steel

Sweeping changes are under way in tire-making. First innovations in a series of new developments expected to reach marketing stages over the next four-five years are being quietly introduced, right now, in a limited number of tire models.

But the major results of the biggest research-and-development program ever carried out by North American tire makers likely will not hit the market with full force until 1974-75.

Here are the two major new developments in tire-making for the 1970's:

1. An indicated larger scale shift to use of steel wire as reinforcement in tires.

2. A rapidly accelerating swing to manufacture or radial tires (in which the plies run from

bead to bead, at right angles to the tire, with a covering belt over the plies).

These developments will provide an important improvement in tire-safety levels and tire life and should allow more sweeping manufacturer guarantees. They will also mean higher tire prices.

The two largest U.S. tire makers have already announced plans for steelbelted, bias-ply passenger tires. Goodyear Tire & Rubber Co. is already producing some steel-belted passenger tires, in which steel replaces fibre glass in the belt running around the tire. But polyester fibre is still used as reinforcement in the tire carcass. Goodyear is also planning to have its first radical-ply premium tire with a

steel belt on the market by late this year.

Firestone Tire & Rubber began producing a passenger tire with a steel belt over a rayon body last month.

B.F. Goodrich Co., which this year introduced a radial tire both in Canada and the U.S., makes use of rayon in the belt and tire cord. The only thing reported holding up a more rapid and widespread shift to the use of steel wire in belts is the drastic shortage of this sophisticated wire product. At present, there is not a single manufacturer in North America, although two plants are expected to come into operation in the U.S. by yearend. Meanwhile Goodyear has announced plans to build its own wire plant in Luxembourg. The rush to obtain wire cord is so great that other major tire makers may decide to get into the act. Michelin Co., France's major tire maker, which for years have been producing radial tires with steel cord in Europe, is not expected to bring its planned wire plant in Nova Scotia into production until late 1971 or early 1972.

One of the big industry guessing games is whether Michelin will export heavy-wire shipments to competitive tire

makers in the U.S., or keep all its production, for its own new tire plant, also going up in Nova Scotia.

Some tire company officials say privately that, once the steel-wire know-how and supply is adequate on this continent, this product may also take over the bulk of the tire-body cord market, largely ousting such long-established man made fibres as nylon, polyester and rayon. The uncertain future for polyester in the tire market probably figured in Du Pont of Canada Ltd.'s decision to postpone construction of a planned \$20-million, 30-million-pound-a-year polyester plant at Morrisburg, Ont. Steel as a reinforcement for tire bodies has been used for a number of years by European tire makers. But, so far, its North American use has been restricted to off-the-road applications (Tires for logging and mining equipment.) The widescale use of steel in tires would be popular with governments and consumer safety bodies, although cost would likely be greater than that of other man-made fibres.

In the offing is another highly interesting contender for the tire-cord market; Du Pont's hush-hush Fibre B. Du Pont

claims its man-made fibre has far greater strength again than steel, and greater dimensional stability than any organic fibre now available. But no one sees Fibre B being a serious competitor for years, since the fibre is still in a development stage. Recent developments in tire-making machinery could hasten the use of radial-ply tires as original equipment in North American cars. There is a good chance that, with development of a less costly way of making the radial tire, it could become original equipment in a number of automobiles by the 1974 model year.

Radial-ply tires are currently fitted by some North American car manufacturers as original equipment options on a few sporty models made in the U.S. But so far, one big deterrent to large-scale swing-over by car makers has been that, to avoid the somewhat harsher ride with radials at low speeds, car suspension systems would have to be altered. But the cornering qualities and longer tire-tread wear are definitely going to swing the market in their favor, most tire company officials claim. Although the choice will depend heavily on economics, the betting in tire circles is that steel will win in a walk.

Those cleaning products

BY
CONSUMERS' ASSOCIATION
OF CANADA

Science and industry have worked hard to bring consumers many products to remove soil and prevent it from sticking to household surfaces; so many, in fact, that housecleaning today is a job for the head as well as the hands. It is becoming hard to keep track of what each product does best and even harder to remember to remember the damage that can be caused if the product is misused.

The first rule for any cleaning job should be: always read the label. The labels on cleaning products should provide information on their use, handling, storage and disposal as well as listing first aid information and antidotes.

Unfortunately, all manufacturers of chemical products have not adopted adequate cautionary labels, so do not use cleaners carelessly. The chemical qualities that make them cleaning agents also make them potentially dangerous.

Beginning June 1 of next year, all consumer chemical products must be labelled according to a new system developed by the federal Department of Consumer and Corporate affairs. The Hazardous Products Act, passed by parliament last year, gives the Department authority to ban certain hazardous products and to regulate the sale, distribution, advertising and labelling of others. The new regulations will ensure that you are told about the hazards, right on the product but until then, it is up to you to be careful and heed the instructions that are provided.

The second rule when you clean is to use the gentlest product and procedure possible.

Scouring powders that act fast and clean deep are great for an old, dulled sink, but in time will

mar the surface of a shiny new one.

Oven cleaners may be either a spray or the "paint-on" kind. These strongly alkaline products clean the oven beautifully but can damage aluminum, linoleum, painted surfaces, baked enamel and wood as well as your skin. The cleaners which work so well on the porcelain enamel inside the oven, can damage the finish on the outside of your stove.

Oven coatings are not cleaners, but are actually a silicone spray to coat the oven surface and keep spatters and food spills from sticking. When sprayed on a clean oven and allowed to dry, spills and spatters wipe off with a wet cloth.

Drain cleaners can be either caustic soda (lye) or acid. The caustic produce generates heat when added to water and removes grease by combining with it to form a soluble soap. It must be flushed away with hot water before it solidifies. Acidic drain cleaners dissolve grease. Both can damage porcelain and other metals and burn the skin, so should be used very cautiously.

Toilet bowl cleaners substitute chemical action for scrubbing. They disinfect and remove stains from toilet bowls which are made of vitreous china but they can mar less acid-resistant porcelain, so be careful not to place the container on the lavatory or tub where it might spill.

Consumers' Association of Canada reminds you to use discretion in the choice of storage area for these housecleaning aids. The cupboard under the sink is too dangerous a place for many of these potentially hazardous chemicals. Remember to keep all cleaning products out of the reach of children. Every day, somewhere in Canada, a toddler is poisoned by these household helpers.



**BURST A BALLOON
WIN A PRIZE**

**AYRE'S BALLOON FESTIVAL
SEPT. 4th. to SEPT. 30th.**

DURING

**WITH A PURCHASE
OF \$5.00 OR OVER
YOU GET A CHANCE
TO BREAK A
BALLOON**

PLUS

**AN EXTRA
CHANCE WITH EVERY
ADDITIONAL \$50.
PURCHASE**

**PRIZES VALUED TO
\$100.00**

Ayre's
WABUSH
PLAZA

WOW

Home-owners' ad column

FOR SALE: 1966 Meteor Rideau 300. Price \$800.00 or nearest offer. For further information contact W. Best, Bunkhouse No. 2 Room 209, or phone 944-3317.

FOR SALE: 1967 Dodge Monaco 500 Convertible. New tires. Floor Consul. Bucket Seats. 22,000 P.S., P.B., P.W. Phone 944-2713 after 5:30 p.m.

FOR SALE: (1) Living room floor lamp with two swivel shades. Good condition. Price \$10.00. Call 944-3309.

FOR SALE: (1) box of clothes for girl age 10 or 12. (Includes 2 Pullovers, 5 dresses, mostly for winter, 1 pantsuit (new). Assorted colors, all for \$6.00. Call 944-3309.

FOR SALE: Fleetwood Radio-Phonograph Combination. Call 944-5290 after 5:00 p.m.

FOR SALE: Polaroid Land Camera complete with carrying case and electronic flash. For further information phone 944-2324.

FOR SALE: Car Tape Deck with AC-DC convertor. AR type. 8 Tapes & Speakers. Phone 944-2713 after 5:30 p.m.

NURSERY SCHOOL: Registration for nursery school for the 1970-71 year is now open. For information call Mary Christie at 944-5898.

Church calendar

OUR LADY OF PERPETUAL HELP
Rev. J. Laperriere, O.M.I. and Rev. F. Lemire

SUNDAY
9:00 a.m. - Mass
11:00 a.m. - Mass
5:00 p.m. - Mass French.
7:00 p.m. - Mass
Weekday Masses at 8:00 a.m., 5:00 p.m. and 7 p.m.

ANGLICAN MISSION OF LABRADOR WEST
St. Paul's, Labrador City, Rev. W.J. Bellamy, B.A.L.Th.

For the month of August and for September 6th, the schedule for the Anglican Mission of Labrador West is as follows:

ST. PAUL'S CHURCH LABRADOR CITY
Worshipping with Carol United Church at 11:30 a.m. each Sunday. No other Services or meetings.

ST. PETER'S CHURCH, WABUSH:
No services. The congregation is welcome to attend services at

Christ Church each Sunday at 2:00 p.m. or Carol United Church at 11:30 a.m.

CAROL UNITED CHURCH
Rev. William Mayberry

11:30 - Morning Worship
7:15 - Evening Worship
10:00 to 11:30 - Kindergarten and Nursery School.
10:30 - Sunday School for Primary and Grade 1.
Saturday - 7:00 p.m. Junior Choir.

SALVATION ARMY
Captain Harold Rideout

11 a.m. - Holiness Meeting.
2:30 p.m. - Sunday School
7:30 p.m. - Evangelistic Service.

OUR LADY OF THE ASSUMPTION, WABUSH
Rev. J. Blouin, O.M.I.
10:00 a.m. - Mass
7:00 p.m. - Mass
Weekdays except Friday, Mass at 5:00 p.m.

Friday, Mass at 3:15.
There is confession before each Mass.

CHRIST CHURCH, WABUSH
The Worship Service will be held at 2:00 p.m. every Sunday for the month of August only. Guest preachers will be supplying the pulpit for this month. A nursery is provided for young children. Church school will resume in September.

PENTECOSTAL CHURCH
Pastor W.J. Gillett.

11:00 a.m. - Morning Worship
3:00 p.m. - Sunday School
7:30 p.m. - Evangelistic Service.
Tuesday: Prayer Meeting at 8 p.m.
Thursday: Young people's Service at 8 p.m.

CHURCH OF CHRIST
Lord's Day Worship 810 Cormack Street, Wednesday evening Home Bible study 8 to 10 p.m.

A good reason for borrowing is a good reason for lending at HFC

Got a money need? See HFC. We'll understand and help... because in our 92 years we've seen... and solved... just about any kind of money problem you can imagine. When you need to borrow... to pay bills, buy a better car, take a vacation, or accomplish some other important purpose... we're glad to help. And we provide a wide choice of convenient repayment terms. Bring your money need to us today. Let us show you why, every year, more than 2½ million people borrow with confidence from Household Finance.

Apply for your loan by phone.
We'll supply your loan by mail.

AMOUNT OF LOAN	MONTHLY PAYMENT PLANS					
	60 months	48 months	36 months	30 months	24 months	12 months
\$ 100	\$.....	\$.....	\$.....	\$.....	\$6.12	\$9.46
300	18.35	28.37
550	23.73	32.86	51.24
1000	41.45	58.11	91.56
1600	60.47
2500	77.16	94.48
3000	92.59	113.38
4000	107.53	123.46	151.17
5000	134.41	154.32	188.96

Above payments include principal and interest and are based on prompt repayment but do not include the cost of life insurance.

HOUSEHOLD FINANCE 
Corporation of Canada

LABRADOR CITY
Carol Lake Shopping Centre... Telephone 2647
Ask about our evening hours

Labrador television guide

WEDNESDAY, SEPT. 9

3:30 - EDGE OF NIGHT
4:00 - BONNIE PRUDDENCE
4:30 - TAKE THIRTY
5:00 - HISTORY MAKERS
5:30 - ULYSSE ET OSCAR
6:00 - BOITE A SURPRISES
6:30 - BANANA SPLITS
7:00 - GREEN ACRES
7:30 - DEBBIE REYNOLDS
8:00 - LA BOHEME
8:30 - ENQUETEURS ASSOCIES
9:00 - McQUEEN
9:30 - TELEPLAY
10:00 - BONANZA
11:00 - ALL AROUND THE CIRCLE
11:30 - CBC NEWS

THURSDAY, SEPT. 10

3:30 - EDGE OF NIGHT
4:00 - BONNIE PRUDDENCE
4:30 - TAKE THIRTY
5:00 - ARTHUR & THE SQUARE KNIGHTS
5:30 - ULYSSE ET OSCAR
6:00 - BOITE A SURPRISES
6:30 - BANANA SPLITS
7:00 - THIS LAND OF OURS
7:30 - DORIS DAY
8:30 - LE MARIE MORGANE
8:30 - DONALD LAUTREC
9:00 - HERE COME THE STARS
10:00 - THURSDAY NIGHT
11:00 - CBC NEWS

FRIDAY, SEPT. 11

3:30 - EDGE OF NIGHT

4:00 - BONNIE PRUDDEN
4:30 - TAKE THIRTY
5:00 - BIRDMAN & GALAXY TRIO
5:30 - ULYSSE ET OSCAR
6:00 - WORLD OF MAN
7:00 - JULIA
7:30 - SINGALONE JUBILEE
8:00 - BILL COSBY
8:30 - NATURE OF THINGS
9:00 - CHAPEAU MELON
10:00 - MISSION IMPOSSIBLE
11:00 - CBC NEWS
11:20 - FEATURE FILM
Gun Fight at Dodge City

SATURDAY, SEPT. 12

3:30 - HI DIDDLE DAY
4:00 - KLAHANI
4:30 - CHARLIE CHAPLIN
5:00 - LASSIE
5:30 - LES ANIMAUX CHEZ EUX
6:00 - BUGS BUNNY SHOW
7:00 - GALLOPING GOURMET
7:30 - ONCE MORE WITH FELIX
8:00 - ZOOM
9:00 - GREAT MOVIES
North by Northwest
11:00 - CBC NEWS
11:20 - CINEMA

SUNDAY, SEPT. 13

3:00 - INTERNATIONAL ZONE
3:30 - THE GROUP
4:00 - AUX PAYS DES GEANTS
4:30 - MY WORLD
5:00 - MUSIC MACHINE
6:00 - WALT DISNEY
7:00 - QUELLE FAMILLE

7:30 - ATOMES ET GALAXIE
8:00 - ED SULLIVAN
9:00 - FORSYTE SAGA
10:00 - STRUGGLE FOR CHINA

MONDAY, SEPT. 14

3:30 - EDGE OF NIGHT
4:00 - BONNIE PRUDDEN
4:30 - TAKE THIRTY
5:00 - SUPER 6
5:30 - ULYSSE ET OSCAR
6:00 - BOITE A SURPRISES
6:30 - D'IBERVILLE
7:00 - MUSIC TO SEE
7:30 - 5 YEARS IN LIFE OF
8:00 - GOVERNOR & J.J.
8:30 - BOLD ONES
9:30 - CONCERT POPULAIRE
10:30 - MEMORANDUM ON A FROZEN ARK
11:00 - CBC NEWS

TUESDAY, SEPT. 15

3:30 - EDGE OF NIGHT
4:00 - BONNIE PRUDDEN
4:30 - TAKE THIRTY
5:00 - H.R. PUFNSTUF
5:30 - ULYSSE ET OSCAR
6:00 - BOITE A SURPRISES
6:30 - DRESS REHEARSAL
7:00 - NFLD. NEWS DIGEST
7:30 - HAPPY DAYS
8:30 - NAME OF THE GAME
10:00 - FORMAT '60
11:00 - CBC NEWS

(Programs subject to change).

Speaking of Sports

BOXING: Over 1,000 people enjoyed an eight fight card at the Labrador City Arena last week. As reported in our previous Aurora, Terry Hayward won the main bout by a K.O. in the third. Other winners were Royal Canning, "Bull" Coady, L. Cutler, "Ace" Sommerville. While Johnny-McGregor - Brent Barron; Markie March - Terry MacDonald; and Terry McGregor - Harry Follett all fought to draws. We were speaking with Terry prior to his departure for Montreal on Friday past. Terry stated that tentative plans call for another card at the L.C. Arena on Sunday 20th Sept. Hayward will be training in Montreal for a rematch with Leslie Phillips of New York. He also hopes to see Bill Drover and if possible have him fight on the same card.

SOFTBALL: All leagues have now concluded their play-offs and winners have been decided in all sections. The 1970 season was quite successful, thanks to a big assist from the weatherman. Early next month there will be a distribution of prizes during a banquet at the Ashuanipi.

SOCCER: The All-Star team visited Sept Iles over the weekend. Will have details in our next issue.

TENNIS: Details on the final tournament of the season will be published in our next issue.

CURLING: The lounge has opened for the season and Alf is on duty daily. Current plans called for the resumption of regular Curling late next month.

Numerous other sporting

events, including the U.S.A.W., sports day, were held over the Labor Day weekend. The majority of these, with pictures, will be covered in our next issue.

TAMARACK GOLF CLUB NEWS

In the junior medal play tournament held on Saturday and Sunday, August 29 and 30, Andrew Robertson won the trophy donated by the Town of Labrador City. Andrew shot rounds of 84 on both days to take low gross. Bill Lake was the low net winner. Chris Davenport and John Bastow Jr. will play off on the 12th of this month for the junior championship.

Ladies "relay" tournament held Sept. 2, 1970. Low net winners were Barbara Selleck and Dora Anderson. Runners up were Helen Burford and Julia McEwan. A birdie prize was won by Dora Anderson. The weather was cool and comfortable.

Members are reminded of the annual trophy night being held this year on Sept. 26. Tickets are available at the registration trailer or from any member of the executive. Sales will cease on Sept. 19.

Social calendar

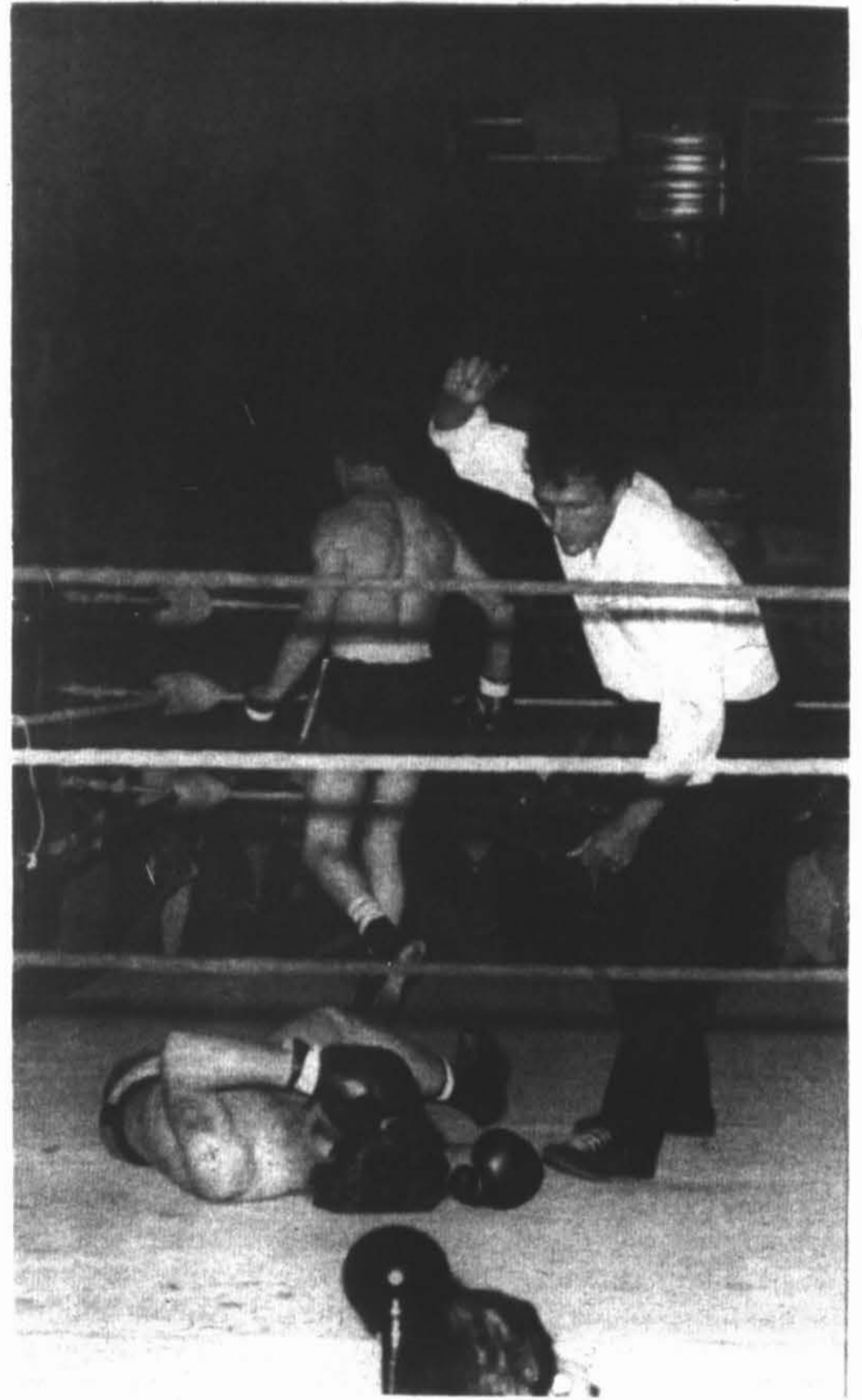
ASHUANUPI SOCIAL CLUB:
7 through 20 Sept. - "The Censors" featuring their "Topless Go-Go Dancers."

ROYAL CANADIAN LEGION: NO. 47 LABRADOR CITY:
12-13 Sept. Dancing to the music of the "Nfld. Showband" from 9.00 p.m. till closing.
September 16, games night at 8.30 followed by the Nfld. Showband.

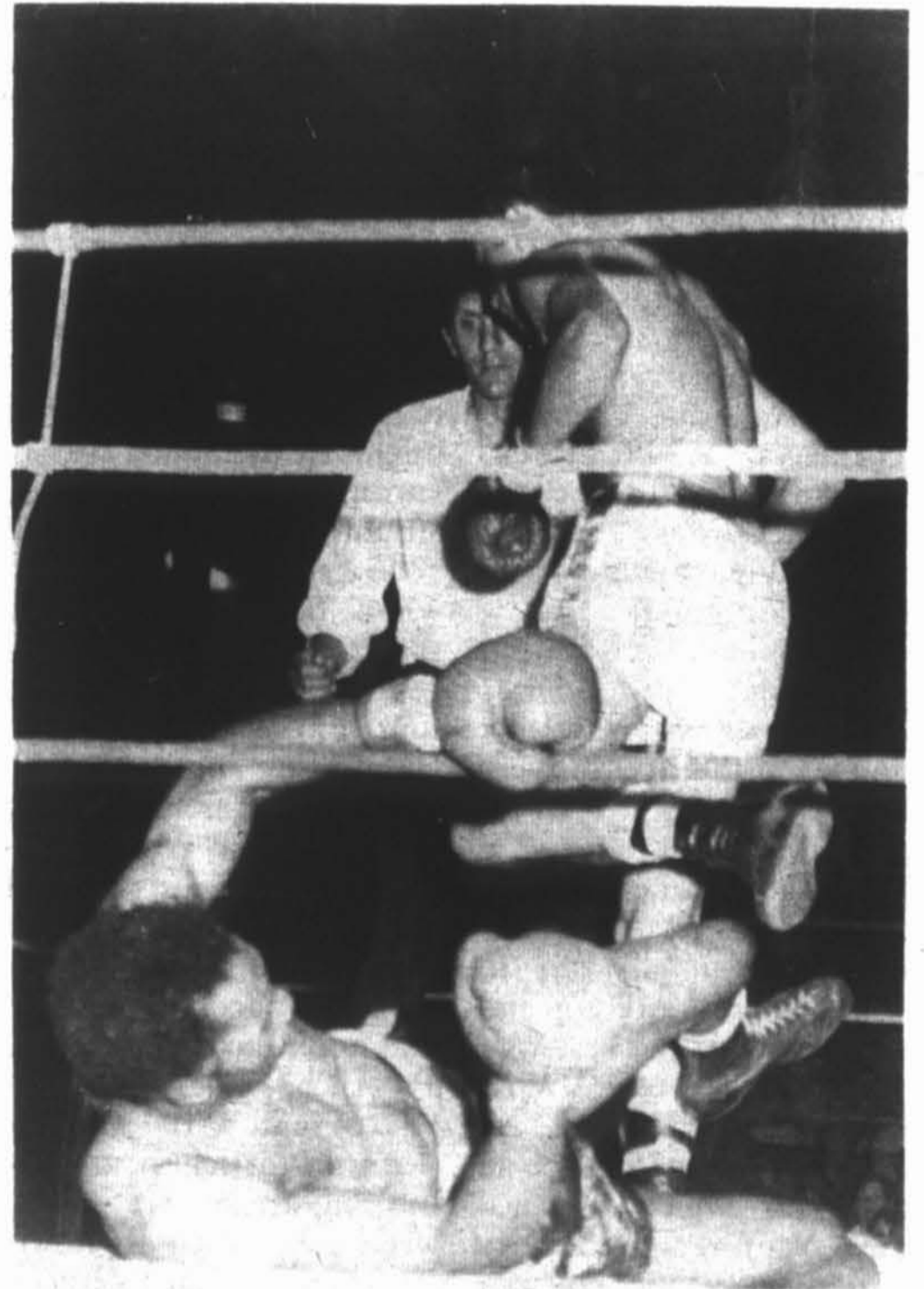
O'BRIEN HALL:
7 thru 13 Sept. - "The Second Time Around."

ROYAL CANADIAN LEGION: NO. 57 WABUSH
9 Sept. Movie "Hatari."
12 Sept. Dancing to the music of the "Nite-Beats." From 9.00 p.m. till closing.
13 Sept. Games night. 8.30 p.m.
14 Sept. Darts. From 7.30.
15 Sept. Games Nite. 8.30 p.m.

SIR WILFRED GRENFELL HOTEL:
10 Sept. "Movie"
11 - 19 Sept. - The "Zebra" Dance-show band. Nightly entertainment. Admission \$1.00 per person. Admission, \$1.50 per person Saturday.



He's down for the count. Action in the recent boxing card at the L.C. Arena.



Hayward "decks" Wilson in the main bout evening (Hlipko Photos).

ASHUANUPI SOCIAL CLUB

7 THRU 20 SEPT.

"THE CENSORS"

FEATURING THE
"TOPLESS GO-GO DANCERS"

ADMISSION MONDAY THRU THURSDAY \$1.00
FRI.—SAT.—SUN. \$1.50 PER PERSON

Effective 1 Sept.

Autumn-Winter Dress Regulation are in force.

"Happy Table" Nights.

Specials to all those at the lucky table.



VIENNA, capital of Austria: Vienna is an easy-to-see cluster of magnificence. Getting off the beaten track is fine for the traveller who has been most everywhere. But the best known places get the heavy traffic for well deserved reasons.

So it is with Vienna. The city on the Danube has all the nostalgia and charm of the Strauss waltzes it spawned, and no amount of reading or movie going can prepare anyone for the cluster of magnificence on the spot. Whether you want to concentrate on art, music, history or just good eating, there's an orgy to be had. The only problem is knowing where to start.

Just as a starter, there are about 50 museums and art galleries, not to mention a dozen or more memorial rooms to such historic personages as Beethoven, Haydn, Mozart and Schubert. Come autumn and the Vienna state opera opens again. It has a repertory of 60 production and a program that changes daily. Beethoven is getting big play in the city this year because of the 200th anniversary of his birth.

After the first bewildering look, Vienna is a surprisingly easy city in which to get around, and this is, by far, the best way to see the city. Most sight-seeing treasures are within or close to the old city walls, which long ago the Viennese cleverly cleared away and replaced with a street-car line. This is The Ring, which, is shaped, like a horseshoe, beginning and ending at the Danube canal. Several cars veer off from The Ring to interesting spots in the outer city. One drops passengers near the two Belvedere Palaces, a popular

tourist haunt, while another heads for Schonbrunn, the summer palace of the royal Hapsburgs. An afternoon visit is best for the lavish apartments and gardens, for the mornings find them overrun with tours.

Eventually, the red, 19th century street cars will go, because Vienna is now building a \$200 million subway, and has a couple of gaping holes messing up downtown traffic to prove it. First trains are scheduled to run in 1975. But meantime, the tinkling bells of the street cars lend color to the scene.

To make sight-seeing easy, the Viennese have a little booklet, *Introducing Vienna*, which can be picked up in any bookstore for about 35c. It lists every building and monument of interest, keying the writeup to a numbered, enamel shield on the actual site. In summer and well into autumn, these shields are bedecked with red and white flags which can be spotted easily a block away. It's wise to take one city tour to get oriented and perhaps say another tour of the environs, say, the Vienna Woods or wine-growing district. But from then on, Vienna should be taken at a walking pace. Otherwise, you never have enough time at such places as the Historical Art Museum (Kunsthistorisches) on the Burgringstrasse. It has a wealth of treasures. It will take most of an afternoon to sift through its 20 ballroom-sized displays.

The little Albertina museum on Auginstrasse has one of the world's finest collection of drawings and engravings, Michelangelo, Toulouse-Lautrec, Renoir and Albrech Durer. Across the street is the Mozart

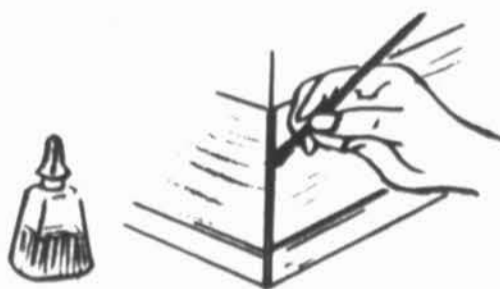
cafe, one of many coffeehouses in the city and good for eating any time of day.

One of the happy notes about Vienna is that there's always a park or coffeehouse nearby when the feet begin to give out.

TRAVEL NOTES: Britain's newest airliner, Rolls-Royce-powered Trident 3B, is now undergoing flight tests. Aircraft's unique feature is a small, lightweight jet booster engine for additional take-off thrust. Booster will be used on short runways, high altitude airfields, or in a situation where extra safety margin of jet power is needed. Delivery of jets, on completion of trials, will begin early in 1971.

MEXICO: Air fares have gone up for domestic flights in Mexico an average of 15%. Aeronaves and Mexican airlines recently confirmed the hike and cited increased operating costs as the reason.

CARIBBEAN: Here's news for "island hoppers." ALM Dutch Antillean Airlines recently initiated direct service between New York and St. Maarten, a charming half-Dutch, half-French isle which has established itself in the past few years as an important vacation and cruise destination. Now welcoming passengers is the new 150 room St. Maarten Isle Hotel and Casino. St. Maarten has several outstanding medium-sized and small hotels, on both the French and Dutch sides, offering excellent cuisine, accommodations and resort facilities.



SPOT PAINTING

When painting door jambs, baseboards, and other often-abused surfaces around the home, it's a good and practical idea to save a bit of the paint in an old fingernail polish bottle. This little bottle, with its accompanying tiny brush, will provide you a color-matching, touchup kit that comes in very handy for covering up any marks or scratches that might appear later - (Gene Von).

Scanning the Market

BY C.S. DEVINE

The impending shortage of oil in the U.S. gave the Canadian market quite a boost last week, with share trading reaching its highest level since May. The reduction in the Bank of Canada prime interest rate to 6.5% certainly did not harm things. However there is still a long way to go to bring average interest rates down to "normal" levels. I read several years ago that the United States developed on 4-5% money. So when J.L. Canadian is paying 9% plus for mortgage money he is still paying double the rate that built the largest industrial power in the world.

As promised in our last column, we will this week, again review our hypothetical Labrador First Fund. We have not traded since late June, preferring to wait out the summer doldrums. The only change in our portfolio was the substitution of Northgate Explor. for Gortrum Mines, which was brought about by the takeover of Gortrum by Northgate on a 3 for 1 basis. We received 33 shares of Northgate for our 100 Gortrum held.

PRESENT HOLDINGS AS OF 31 AUGUST 1970:

COMPANY	NUMBER OF SHARES HELD	VALUE AS OF 31 AUG. '70
Ranger Oils	800 @ \$10.50	\$8,400.00
Revenue Prop.	2,000 @ .46	\$ 920.00
Wajax Ltd.	100 @ 8.00	\$ 800.00
Northgate Explor	33 @ 10.00	\$ 330.00
Sklar Furniture	300 @ .90	\$ 270.00

TOTAL VALUE:	\$10,720.00
DIVIDENDS RECEIVED:	\$113.00
CASH ON HAND (After brokerage fees of \$540.00):	\$1,027.00
TOTAL ASSETS 31 AUGUST 1970:	\$11,860.00
TOTAL INVESTMENT (1 Jan. 1970):	\$10,000.00
PROFIT YEAR TO DATE:	\$1,860.00

As of 31 August, major indexes in the U.S. and Canada were off 5-10%. Our fund shows a profit of 18.6%, in its eight months of operation. We don't want to "pat ourselves on the back" but this is a good showing. Now that a late year rally may be underway we hope to trade on a more frequent basis, hoping to increase our profits.

INVESTMENT TERMS AND DEFINITIONS:

Q: Do governments issue mortgage bonds?

A. No. Unlike corporations bonds, government securities are not backed by a mortgage on fixed assets because it is impractical to pledge to the lender community property designed for the benefit of all.

Q. Then what security is there behind a government bond or debenture.

A. The government's legal right to levy taxes upon its citizens and corporations coupled with the ability and willingness of taxpayers to pay their taxes become the security for the debenture issue.

Even during the depression of the 1930's, few municipalities or provinces defaulted on the payment of interest or principal on their securities and practically all of those that did so have since re-established excellent credit ratings.

Q. HOW DO GOVERNMENT SECURITIES RANK?

A. Practically all must be considered high grade, quality investments. The federal government has very broad taxation powers and its securities therefore have the highest credit rating of any Canadian borrower. As such, Government of Canada bonds are considered as a yardstick by which to compare all other bonds in the bond market. Provincial governments also have extensive sources of revenue and their debt obligations are likewise "gilt edged." Municipalities range from large metropolitan districts down to small villages and their credit ratings vary considerably. Generally speaking, though, municipal debentures rank in quality only slightly below provincial securities.

Q. What types of securities does each of the three levels of government issue?

A. The federal government issues Treasury Bills weekly. These are short term obligations, usually in large denominations and chiefly of interest to institutional investors. The Government also issues Canada Savings Bonds once a year and conventional bonds when funds are required and/or when market conditions indicate a favourable reception.

A number of provinces issue Savings Bonds, some have their own Treasury Bills and all provinces issue conventional debentures.

As a rule, municipalities do not issue anything but debentures. Typically a municipal debenture matures in part each year during its over-all term. For example, City of Halifax 5.75% Serial Debentures mature in part each October 1st between 1964 and 1983. Recently, a few of the larger cities have also been issuing Treasury Bills or Promissory Notes.

Survival day to be held October 14

This summer, from Newfoundland to British Columbia, concerned individuals and environmental groups have been meeting to discuss and pinpoint local pollution problems.

Hundreds of towns and cities across the country are answering the challenge of Survival Day committees which ask, "What have you done for your environment lately?"

But what is "Survival Day"?

It is a day that has been set aside to make people aware of the growing problems of pollution; pollution of waters, our land and the very air we breathe. Wednesday, October 14, 1970 has been designated "Survival Day" across Canada. Someone has said it will be like "Earth Day" in the United States, only with teeth in it AND Canadian content.

All groups have been asked by the central committee to submit reports documenting local pollution problems and actions (or lack of them) taken by their local governments. Furthermore, each group will be drawing up proposals for the solution of their specific home-town problems. These reports will be forwarded to the national committee which will assemble these local and national proposals into a detailed single People's Commission report to be submitted to Ottawa on Survival Day, October 14.

Our local Survival Day Committee is composed of representatives of various pollution groups in the St. John's area, as well as many interested citizens. Letters are being forwarded to schools, churches, organizations and service clubs in the St. John's area asking each to embark on a specific project that will help to correct a particular pollution problem.

One of the first groups to volunteer aid is the YWCA which will organize a "Survival Day" poster contest throughout the city's school system directed toward a particular problem; that of litter. Gordon Bastow, Manager of the St. John's Better Business Bureau supported the objects of the committee when he quipped, "We also fight a form of pollution. The Better Business Bureau fights pollution of the mind."

Members are contacting communities throughout the province in the hope that they too will join in presenting their individual problems to every level of government.

Life insurance is up

Life insurance ownership in the Province of Newfoundland, is up 4 per cent -- from \$905 million in 1968, to \$942 million in 1969, according to The Canadian Life Insurance Association.

Of the \$942 million in force at the end of 1969, \$426 million was individual insurance, and \$516 million was group insurance.

The average Newfoundland family now owns \$9,200 of life insurance coverage, in both individual and group policies.

While ownership was on the increase, so were benefit payments to Newfoundland policyholders and their beneficiaries. The Association reports that benefit payments for the same period amounted to \$11 million -- up from \$9.5 million. Of these payments,

nearly two-thirds went to living policyholders, while the remainder was paid to beneficiaries of policyholders who died.

Commenting on these statistics, C.L.I.A. president, Herve Belzile, said: "The figures show that even during times of inflation the residents of this province regard life insurance as a sound investment in their future."

"One of the fundamental steps in combating inflation is to increase domestic savings, thereby making more capital available for use by Canadians, in Canada."

"The people of Newfoundland have certainly indicated their willingness to invest in the future of their province and country."

K. of C. meet Sept. 12

The fall meeting of the Newfoundland and Labrador State Council, Knights of Columbus, will be held in Grand Falls on Saturday, September 12.

State Deputy Fintan J. Aylward of St. John's said the State Officers, District Deputies, Grand Knights and six point program Chairmen of each of the thirteen councils in Newfoundland and Labrador will attend.

The State Officers will meet at 8.30 a.m. Saturday and the general meeting will commence at 9.30 a.m.

Mr. Aylward said that the purpose of the meeting is for new officers of the various councils to become acquainted and to plan activities for the coming year.

The State Officers, who were elected at the annual convention at Gander in May, will be installed in a special ceremony planned for Sunday, September 13, 1970.

The installation will take place during 11.00 a.m. Mass at the Cathedral of the Immaculate Conception.

Officers to be installed are -- Fintan J. Aylward, State Deputy; Bernard Foley, Harbour Grace, State Secretary; John F. Byrd, Grand Falls, State Treasurer; John Murphy, Labrador City, State Advocate; and John Dunphy, Carbonear, State Warden.

The Fall Meeting is being hosted by Grand Knight of Notre Dame Council, Grand Falls, Donald J. Russell, and his executive.

Solve-a-crime

You are the detective

BY A.C. GORDON

You are working on a case in which Kathleen McCormick, well-known nightclub singer, has been brutally beaten to death in her apartment and her famous collection of jewels stolen.

You have succeeded in narrowing your list of suspects down to four men, all of whom are known to have dated the late Kathleen McCormick within the last couple of weeks, and all of them men with unsavory reputations. They are Joe Morgan, Brad Yockey, Glenn Peters and Steve Reilly. One of these men has been out of prison only two weeks after serving three years.

You have issued instructions to have the four men brought in for questioning, but now while you are waiting in your office you study some late information that has just arrived. Certain shady characters in town have been unusually cooperative, due to the fact that, although the murder has been in town only a very short time, he has succeeded in making himself extremely unpopular with the other members of their "profession." A search by the police of Steve Reilly's apartment in the luxurious Brookside Hotel, where he has lived since his suspected involvement in the \$125,000 Jackson jewel robbery more than two years ago, has turned up an impressive assortment of lock-picking devices and other burglar's tools. Glenn Peters was overheard in a violent argument in a local cocktail lounge two night ago denying vociferously that he had ever been involved in any undercover jobs with Brad Yockey, a hoodlum with a record of at least six local arrests for car thefts and service station holdups during the past three years. It was Yockey's present girl friend, Millie Sawyer, who was Glenn Peters' adversary in the argument, she having been at one time his girl friend and a working member of the local gang of blackmailers Peters has headed for more than two years. Joe Morgan visited a local men's store yesterday and paid \$680 cash for four suits, four pairs of shoes and a dozen shirts.

Now, after studying this information, you know, even before questioning the four men, which one is the murderer.

Who is he?

SOLUTION

Joe Morgan. Since the killer has been in town only a very short time, you know that Glenn Peters is not the murderer, as he has been operating his local blackmail racket for more than two years. Since Steve Reilly has lived at the Brookside Hotel for more than two years, he is not the guilty man. Brad Yockey has also kept the local police active for the past three years, this eliminating him -- and leaving Joe Morgan as the brutal killer.

Mind teaser

If I bought a ring for 2/3 of its market value and sold it for 10/9 of its market value, thereby gaining \$126, how much did I pay for the ring?

ANSWER

\$189. Divide the difference between 10/9 and 2/3 into 126, which gives the value of the ring; take 2/3 of this result.

ONE OF THESE
QUINTUPLETS
IS SLIGHTLY DIFFERENT
THAN THE OTHERS.
WHICH
ONE IS IT?

9-20-70

FROM QUINTUPLET NUMBER FOUR.
ONE EYEBROW IS MISSING



special government includes policemen, on guards, announcements to the press in calls.

two victims, Jose to Damasa, were streets riddled with

League victory over White Sox Monday night. May, traded to Baltimore by

From the national press

Keough announces

ONTARIO COMMITTEE TO INVESTIGATE FRANCHISE BUSINESS: The Ontario government has recently appointed a committee to look into mounting complaints that unfair practices exist in the system under which franchises are granted to salesmen and sales outlets. The complaints come both from the public and from people who have been given franchises. The committee will examine all practices and methods of distribution at the manufacturing and retail levels where the market is served under franchising agreements. "Franchising as a form of distribution has been with us for many decades in forms ranging from auto dealer franchises to motel chains," said Mr. Bert Lawrence, Minister of Financial and Commercial Affairs, who announced the inquiry. "Recently it has appeared in new shapes to appeal to the less sophisticated and smaller business investor anxious to increase his income and attracted by frequent advertisements of entrepreneurs." The committee, which will recommend changes in present Ontario regulation, is expected to report on two controversial items by November. These are "referral" and "pyramid" sales. Referral sales are already banned in British Columbia. They occur when the salesman, often working door-to-door, promises the first buyer a reduction proportionate to the number of purchasers to who the buyer can refer him. Many first buyers have been denied their discount by salesmen who claimed the arrangement was not binding because it was not in writing, or that subsequent sales have been referred to them by other, unidentified people. Pyramid distribution involves arrangements under which individuals buy "distribution rights" to a given product in loosely defined areas. "The problem is that the distributor

discovers that many other distributors have also been induced to make rather sizeable investments and the market quickly becomes saturated," Mr. Lawrence said. The committee consists of a chairman and two members representing business and consumers. It will hold public hearings, receive briefs and representations and hopes to present its findings and recommendations to the minister by the end of the year.

VICE-REGAL SYSTEM, 'COLONIAL': Mordecai Richler, a Canadian Writer who has edited a new anthology of Literature from Canada for Penguin Books, has harsh words for a basic national institution, that of governor-general. "It's time the Queen dismissed her Canadian second-floor maid, the Governor-General," Montreal-born Richler says in an introduction by his selection of writings by more than 40 figures on Canada's literary scene. "I'm not bitten by an anti-royalty bug but the Governor-General in Canada, unlike the Queen of England, is not part of the indigenous tradition ... but a divisive reminder of colonial dependence, justifiably resented by the new militant French-Canadian writers," says Richler. The collection is part of a series published by Penguin and designed to represent current literature in verse and prose, from countries and continents around the world. Richler, long a resident of Britain, dedicates the 331-page Canadian Writing Today to Toronto novelist Morley Callaghan and includes in it part of a book on federalism by Prime Minister Trudeau. Because it is meant for English speaking readers, the Penguin anthology reproduces French-Canadian prose and verse in translated

form, with F.R. Scott of Montreal one of the translators whose versions are used. One well-known Canadian writer not represented is Marshall McLuhan, the specialist on mass culture.

ARE THEY REALLY BETTER OFF? For many years a woman married in Quebec without a marriage contract would find herself in a most unenviable position. Legislation of 1866 specifically gave the husband total control over the couple's assets, including what the wife brought to the marriage. These were his to command, spend and dispose of. If, for example, the husband took it into his mind to give everything to his mistress, the wife had little alternative but to throw herself at the mercy of the courts. With the right amount of weeping and gnashing of teeth, she sometimes did quite well. When Bill 10 came into effect in Quebec several months ago, however, great changes were wrought. Under its rules, each partner is free to administer or dispose of his or her own property, sign contracts and if the marriage ends, share equally in the gains realized on common property during the marriage. It is an open question, though, how much better off the woman will really be. In return for more legal rights, the wife is required to cough up for household expenses according to her means. In addition, the debts she incurs on her own assets are hers and the debts incurred for the household are community debts. This may look all very fair on paper, but it is quite possible that arguments before the Courts, could look like a Sunday school picnic. Can the husband include power tools for the basement or a new shaving mirror, for the joint account.

THE B & J LUMBER CO. LTD.

BUILDING MATERIALS
WABUSH INDUSTRIAL PARK
Phone 282-6243-3182
FREE DELIVERY
P.O. 1108




PROTECT WOODWORK

When you must pull a nail from a painted wood surface, try using a putty knife as a shield for protecting the woodwork from marring. Just insert the blade of the putty knife under the claw of your hammer, as in the illustration, and roll the hammer back and forth on it as the nail comes out. - (Gene Von)

MEN'S CLOTHING

I specialize in men's made-to-measure suits, sports jackets, slacks and topcoats, from a well known Montreal manufacturer. New cloths from which to choose.

JACK WILLIAMS 944-2052

ARTHUR F. MILLER
AVOCAT - LAWYER
SHOPPING CENTRE MALL
LABRADOR CITY
OPEN 9:00 a.m. - 5:30 p.m.
PHONE MONDAY THROUGH FRIDAY 944-5909

LEGAL CARD
DAVID B. SPARKES
Lawyer - Advocate
Shopping Centre Mall

From Labrador City to the St. Lawrence by canoe

BY
LAWRENCE JACOBS

Two residents of Labrador City, Herman Perry, 20, originally from Daniel's Harbour and Cecil Reid, 20 from Bonne Bay, victors of a canoe trip of some three hundred miles from Labrador City to a point on the St. Lawrence, sixteen miles from Sept Iles, returned to Labrador City Wednesday September 2, after spending eighteen days cut off from civilization.

They are looking good and none the worse for the hazardous trip which took them down the rapid-strewn and fast-flowing Capacho and Moisie Rivers. "The only bad thing about it was the weather," said Cecil, "after the first day, the weather wasn't suitable enough

for a swim, but it was a beautiful trip; I really enjoyed it."

They left Labrador City August 15 at eight a.m. and by travelling an average of twelve hours a day, they managed to cover approximately thirty miles each day. However, when it was required to portage, they sometimes covered only five miles.

Due to the danger involved in shooting rapids and the mere paddling of the loaded canoe down fast-flowing rivers, a certain measure of caution was definitely required. However the most carefully guarded item of all their supplies appears to have been seven rolls of film on which they captured some of the most interesting points of the trip. Unfortunately, during the

seventeenth day, the film accidentally became wet. However, it doesn't appear to be serious and they do expect to have something to show for their efforts.

The most adventurous part of the whole trip appears to have been the last one hundred miles. This part of the trip, due to a little incident which caused them to leave their canoe behind, was made in a small rubber dinghy. A couple of days prior to beginning the rubber dinghy episode, their canoe was slightly damaged as they travelled down the Capacho, to the extent that it received a small repairable hole. At this time they found it necessary, in order to complete the trip on time, to leave the Capacho and finish the journey by way of the Moisie. To do this, they had to portage for five miles over terrain that had a drop of twenty-five hundred feet. Leaving their canoe, they took the remainder of their supplies over what they describe to have been, 'the most difficult portage of the whole trip,' (they made a total of thirty portages during the trip, each one which took from two to eleven hours to complete). This five-mile portage plagued by windfalls and undergrowth, took eleven hours to complete and as a result of the steep, hilly terrain which dominated during the last one half mile, they were forced to



Cecil Reid (left) and Herman Perry taken minutes before they left Labrador City on Aug. 15. (Photo L. Jacobs).

lower their packs with rope over ridges as high as twenty feet. Pressed for time as they were, they decided to leave the canoe as it would have taken another two and a half days to return for the canoe.

They stated that they saw plenty of game including ducks, geese and caribou. The fishing also was good and they did find time to land eight fairly big lakers which certainly must have provided good eating.

Their fifteen-foot fiberglass canoe was heavily laden with the following equipment and food; twenty loaves of bread, two

gallons of molasses, twenty-five pounds of flour, five pounds of sugar, two hundred tea bags, ten pounds of salt, complete maps of the area, two compasses, life jackets, a well-stocked first aid kit, three hundred feet of rope, two axes, sleeping bag, fishing equipment, tent and other essentials.

I asked them if they would like to make the trip again. "Sure," said Cecil, "I wouldn't mind, there's really nothing to it. I really enjoyed myself." However, they do seem happy to be back, and they later informed me that they have no plans at present to return for the canoe.

New MUN Regents

Dr. F.W. Rowe, Minister of Education and Youth, has announced the names of eleven persons appointed by the Lieutenant Governor in Council to fill vacancies on the Board of Regents of the Memorial University of Newfoundland. They are:

- Mr. J.H. Colbourne, St. John's
- Mr. E. Bert Edwards, St. John's
- Mr. James M. Fagan, St. John's
- Mr. J.D. Fraser, St. John's
- Mr. Aiden Maloney, St. John's
- Mr. Gerald Matthews, Corner Brook
- Mrs. James F. Molloy, Grand Falls
- Dr. W.A. Paddon, North West River, Labrador
- Mr. John P. Pike, St. John's
- Mr. Fred W. Russell, St. John's
- Mr. Geoffrey Shaw, St. John's

It is of special interest that Mrs. Molloy will be the first woman to sit on the University Board of Regents. She is the former Geraldine Colbourne, daughter of the late Fred Colbourne of Bishops Falls and Grand Falls, and is the wife of Lt. Col. James F. Molloy, Commanding Officer of the Royal Newfoundland Regiment and Sulphite Superintendent with Price Newfoundland Limited. Mrs. Molloy is a graduate in Home Economics of St. Francis Xavier University.

TIME WAS..

when average
life expectancy
was 22 yrs.



Back in the days of the Roman Empire, people only lived a short time. Today in the United States, life expectancy is 70 years!

CITY DRUGS LTD.

SHOPPING CENTER - LABRADOR CITY
TELEPHONE 944-2448 or 5395

Dixie Lee Fried Chicken TAKE-HOME MENU

Sir Wilfred Grenfell Hotel

WABUSH



IF YOU LIKE CHICKEN — YOU'LL LOVE DIXIE LEE		
DIXIE SNACK 2 Pcs chicken with french fries \$1.05	DIXIE DINNER 3 Pcs chicken, french fries cole slaw and roll \$1.55	ECONOMY BOX 10 Pcs chicken \$3.60
DIXIE BUCKET (4-6 Persons) 12 Pcs chicken french fries and rolls \$4.95		DIXIE BARRELL (7-10 Persons) 20 Pcs chicken \$5.95

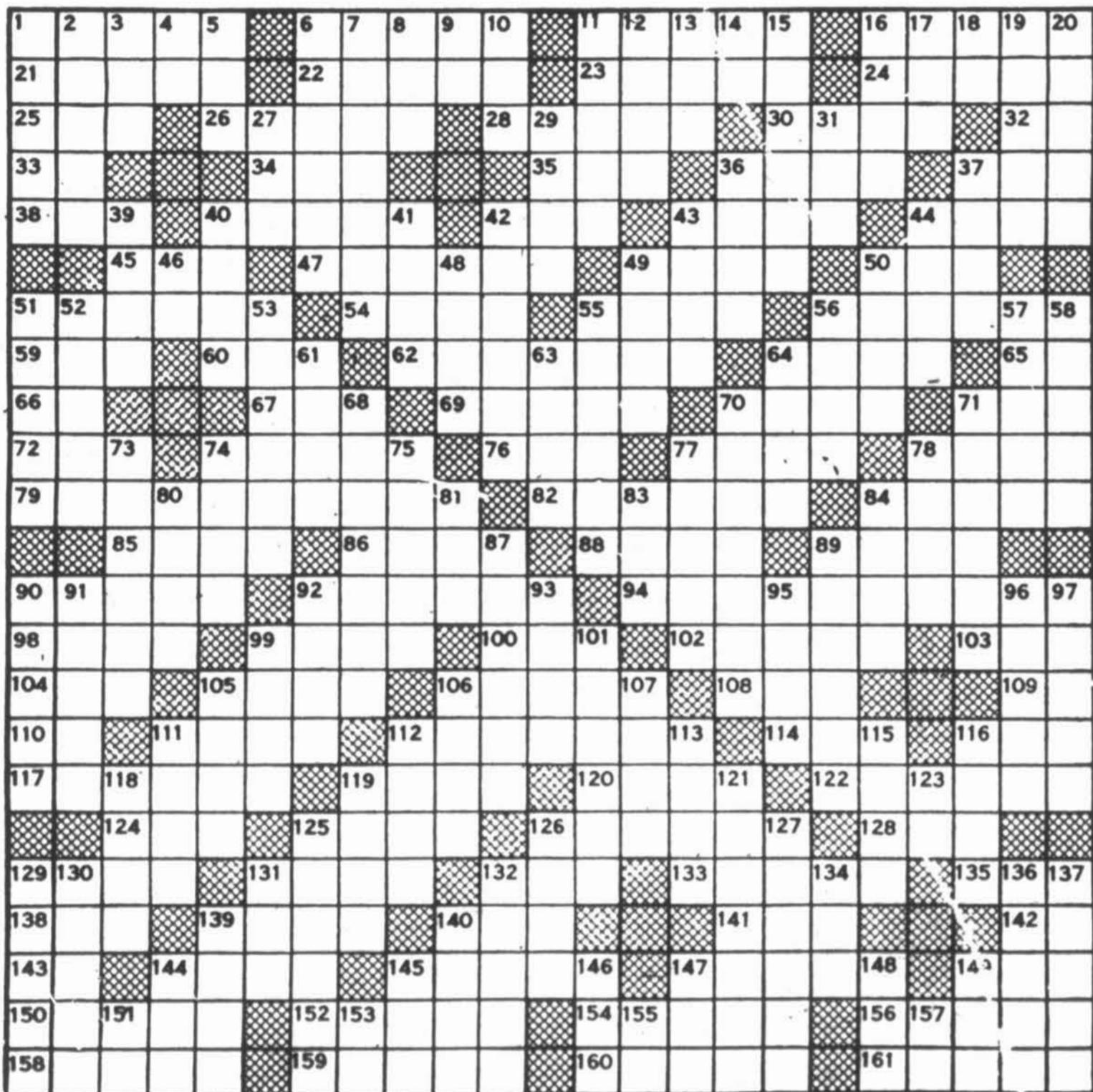
NO WAITING

Phone 3221

FAST SERVICE

Crossword for the evening

- | | | | | |
|----------------------------|-----------------------------|-----------------------------|------------------------------|---------------------------|
| ACROSS | 71—Weight of India | 135—Fiddle | 29—Part of church | 93—Performs |
| 1—Thin, tasteless food | 72—Church bench | 138—Male sheep | 31—Fairly | 95—Harbor |
| 6—Melancholy | 74—Site of Expo 70 | 139—Rudent | 36—Aromatic ointment | 96—Sounds a horn |
| 11—Central American Indian | 76—African antelope | 140—Pigeon pea | 37—Female horse | 97—Long-legged bird |
| 16—Respite | 77—Jason's ship | 141—Lift with lever | 39—Clever | 99—Vehicles |
| 21—Residence | 78—Reach across | 142—No. of scale | 40—String | 101—Earthquake |
| 22—Weird | 79—Butchers | 143—Symbol for gold | 41—Places | 105—Part of face |
| 23—By oneself | 82—Inclines | 144—Tarily | 42—Egg drink | 106—English baby carriage |
| 24—Chemical compound | 84—Fencing swords | 145—Passageway | 43—Long, slender fish (pl.) | 107—Break suddenly |
| 25—Goddess of healing | 85—Playing card | 147—Haste | 44—Microbe | 111—Vessel |
| 26—Dispute | 86—Century plant | 149—Chart | 46—Proceed | 112—Frolic |
| 28—Peeled | 88—Periods of time | 150—Soff | 48—Shore bird | 113—Allowance for waste |
| 30—Exude | 89—Young salmon | 152—Rants | 49—Old French coins | 115—Cupola |
| 32—Artificial language | 90—Blockade | 154—Neckpiece | 50—Damage | 116—Danish island |
| 33—Teutonic deity | 92—Remained | 156—Likeness | 51—Harvests | 118—English streetcar |
| 34—Baker's product | 94—Divided into three parts | 158—Strip of leather | 52—Artist's stand | 119—Partner |
| 35—Edible seed | 98—Learning | 159—Writing tablet | 53—Swampy | 121—Majm |
| 36—Warning device | 99—Son of Adam | 160—County of Asia | 55—Little lump | 123—A continent (abbr.) |
| 37—Mire | 100—Decay | 161—Underground excavations | 56—Philippine knife | 125—Cuts |
| 38—Communist | 102—Worship | | 57—Take unlawfully | 126—High |
| 40—Caverns | 103—Dress (colloq.) | DOWN | 58—Mountain lakes | 127—Thoroughfare |
| 42—Worm | 104—Possessive pronoun | 1—Precipitous | 61—Whip | 129—Crude |
| 43—Barbed spear | 105—Pertaining to the laity | 2—River in France | 63—Vases | 130—Frequent |
| 44—Contest | 106—Docks | 3—Possessive pronoun | 64—Drudges | 131—Rodent |
| 45—The self | 108—Silkworm | 4—Postscript (abbr.) | 68—Unbeliever | 132—Out of date |
| 47—Come into view | 109—Conjunction | 5—Stitch | 70—Occupy chair of authority | 134—Caustic substance |
| 49—Seasoning | 110—Parent (colloq.) | 6—Infer | 71—Enthusiasm | 136—Proverb |
| 50—Pronoun | 111—Flying creature | 7—Buys back | 73—Moistens | 137—Lassos |
| 51—Rectify | 112—Gift | 8—Bitter vetch | 74—S-shaped molding | 139—Cavil |
| 54—Antlered animal | 114—Youngster | 9—Three-toed sloth | 75—Follower of Arius | 140—Food program |
| 55—Model | 116—Devoured | 10—Corded cloth | 77—Three-banded armadillo | 144—Meadow |
| 56—Emptiest | 117—Bars legally | 11—Worries | 78—Classify | 145—Mohammedan leader |
| 59—Dine | 119—Word of sorrow | 12—Appellation of Athena | 80—Egg on | 146—Superlative ending |
| 60—Bespatter | 120—Refuse from grapes | 13—Land measure | 81—Pippen | 147—Cry |
| 62—Winding | 122—Straight-forward | 14—Preposition | 83—Worthless leaving | 148—Obscure |
| 64—Mold | 124—Ethiopian title | 15—Deprived | 84—Journey forth | 149—Male |
| 65—Symbol for tantalum | 125—Bridge term | 16—Skin of fruit | 87—Eagles' nests | 151—Teutonic deity |
| 66—Conjunction | 126—Heavy drinkers | 17—Inquire | 89—Outcast | 153—Man's nicknam |
| 67—Things, in law | 128—Deface | 18—Guido's low note | 90—Viscous mud | 155—Note of scale |
| 69—Noblemen | 129—Prattle | 19—Antitoxin | 91—Jots | 157—Note of scale |
| 70—Tropical tree | 131—Depend on | 20—Wear away | 92—Declared | |
| | 132—Equality | 27—New Deal agency (init.) | | |
| | 133—Name | | | |



Trust

The clouds hang heavy 'round my path,
I cannot see.
But through the darkness I believe
God leadeth me.
'Tis sweet to keep my hand in his
While all is dim,
To close my weary, aching eyes
And follow Him.

Through many a 'thorny path He leads
My tired feet.
Through many a path of tears I go
But it is sweet
To know that He is close to me,
My guard and my guide.
He leadeth me and so I walk
Quite satisfied.

To those who live alone

I live alone, dear Lord
Stay by my side,
In all my daily needs,
Be Thou my guide.

Grant me good health,
For that indeed, I pray,
To carry on my work
From day to day.

Keep pure my mind,
My thoughts, my every need,
Let me be kind,
Unselfish in my neighbours' need.

Spare me from fire,
From floods, from malicious tongues,
From thieves, from fair
And even ones.

If sickness or an accident befall
Then humbly, Lord,
I pray, hear Thou my call.

And when you are feeling low,
Or in despair,
Lift up your heart, and help me
In my prayer.
For I live alone, dear Lord,
Yet have no fear,
Because I feel your presence,
Ever near.

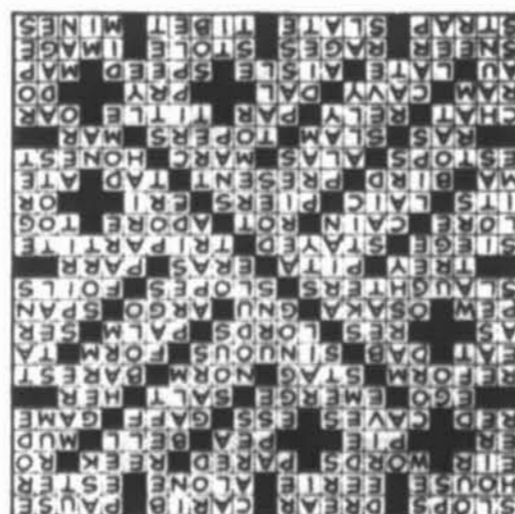
—(By Walter Smith, Sr., New Perican).

Mind teaser

The time now is between 11 and 12 noon. In 13 minutes it will be as many minutes short of 1:00 p.m. as it was past 11 a.m. just 7 minutes ago. What time is it now?

ANSWER

11:57 a.m. Divide the sum of 13 and 7 by 2; subtract 10 minutes from 12:00, and also add 10 minutes to 12:00; which will give the times 7 minutes ago and 13 minutes hence, respectively.



UNSTABLE CHAIR

If one of your chairs wobbles annoyingly because one of its legs is shorter than the others, try this remedy: First spread a piece of waxed paper on the floor, then squeeze onto this paper a blob of plastic wood from a tube. Set the short leg of the chair on the blob. When the plastic has hardened, trim it down with a sharp knife and smooth off with sandpaper. — (Gene Von)

DOFASCO: National Steel Car Corp. Ltd., a subsidiary of Dominion Foundries & Steel Ltd. of Hamilton has been awarded a \$30 million contract from Canadian National Railways for 1,500 railway hopper cars. Delivery is to begin this month at the rate of 16 cars a day. The order will provide work for 900 additional employees at the company's Hamilton plant.

Reduce the easy
SLENDOR
Reducing Plan way. Eat three satisfying meals a day. \$2.50 and \$6.00 sizes.

at
CITY DRUGS and NORTHERN DRUGS

Fascinating garden experiment

BY
A.R. BUCKLEY
OF THE PLANT
RESEARCH INSTITUTE,
OTTAWA

One of the most fascinating and satisfying of all garden practices is the propagation of roses by budding. Although the time taken by amateurs would bring the finished cost of a rose to an exorbitant amount, the rewarding experience of seeing a young plant develop from an eye, and the experiment of testing various stock species best suited to your garden, makes the effort well worthwhile and adds considerably to your enjoyment of rose growing.

To bud a rose you must, of course, have a plant to bud it on. This in itself constitutes a major problem. If you were living in the country in England, you could dig one out of the hedgerow, but here in Canada it is not so easy, for the wild roses of this country seldom make good compatible stock.

To begin now, your stock plants should have been planted last spring; alternatively, you should order some dog rose stock (*Rosa canina*) or multiflora rose stock (*Rosa multiflora*) from a nursery for planting next spring. The dog rose will be difficult to get and is slow growing, but produces hardier roses; the multiflora rose is easy to buy, grows twice as fast as the dog rose, but does not produce plants quite so hardy. It is the stock most commonly used in commerce in this country, as it produces saleable plants in much less time.

The best time to bud roses is during July and August when the sap is flowing well in the understocks and the buds are plump and not too far advanced. To select a bud for use in budding, you first choose a branch of your rose bush which has just finished flowering and then cut out a bud about half-way down where it is most likely to be plump and has not started into growth.

First prepare the stock plant by clearing away the soil from the stem to a depth of two inches below the surface or as near to the roots as possible and remove any low lateral branches that might obstruct the budding operation.

Use a very sharp, thin-bladed knife and start cutting your shield one-half inch from the top of the bud. Penetrate into the wood as thinly as possible to one-half inch below the bud, making a slightly deeper penetration under the bud itself. Remove the shield with as little wood left on as possible. Practise on several buds before cutting the one of your choice.

To remove the slither of wood from behind the bud, hold the shield with the thumb and forefinger, place the point of the knife just under the point of the wood and gradually pry it loose. This can be done with the thumbnail by bending the shield slightly.

The object is to remove the small piece of sapwood without destroying the bud underneath and without scratching the inner part of the shield itself. If you see a slight depression under the bud after the wood has been removed you must try again.

Social, Personal

To all our friends in Wabush who expressed their good wishes, on our departure from Labrador, we thank you. Ron and Daphne Emmett.

Birthday greetings to Roy Andrews who celebrates his birthday on September 14.

A meeting of all Guiders in Wabush will be held on September 15 at 8.00 p.m. at the Guide Centre.

Ladies of Wabush, are you overweight! Regular meetings of the Kule-Tops Club commence on September 14 at 8.30 p.m. at the Rec Centre. For further information call 282-3178 or 282-6266.

When a good bud has been secured keep it moist within easy reach, this could be in your mouth; place the leaf-stem between your teeth.

Next prepare the stock for the insertion of the bud. In the stem of the stock plant where you cleaned it just below ground level, make a T-shaped cut. First make the horizontal part of the T as wide as the shield and then a longitudinal cut about three-quarters of an inch long. Now with the back of your knife or the spatula of a budding knife, gently raise the bark. If it is in good condition you should hear a slight click.

Now use the leaf stem of your shield as a handle and slip the shield into the incision. If it is longer than the incision, cut off the part that extends above the horizontal cut. The shield must fit snugly into the incision.

Most amateur budders use damp raffia to tie the buds instead of the rubber strips used by professionals. Begin wrapping the raffia by overlapping the first turn to secure the end of the shield. Now wrap the raffia around over and under the bud but do not cover the bud itself. When you have finished, the place where the original incision was made should be completely covered with only the bud itself protruding from it.

Shade the bud for a few days and then leave it exposed until the end of September or early October. Then mound it with soil to six inches high for winter protection. About March, cut back the stock to a point three or four inches above the bud. In mid-April after all damage of severe winter frosts has passed, uncover the bud carefully and leave it exposed once more. Once the bud is growing well, cut off the remainder of the stock. It might be a good idea to stake the new shoot to protect it from being damaged.

The following fall, mound once more and the next spring the plant will be ready for the rose garden where it will flower and flourish.

Standard rose bushes are obtained by budding the plant high upon a single-stemmed stock plant. The procedure is similar, but winter protection is more difficult since the plant must be bent right over like an ostrich burying his head in the sand, or taken out of the ground and buried entirely.

The lighter side

THE DEAN: The dean of the college had heard rumors of wild orgies during weekend fraternity parties, so he arranged to get invited to one. To his surprise, it turned out to be a very decorous affair, and shortly after midnight he retired to the bedroom which had been assigned him on an upper floor.

A few hours later he was awakened by a knock on the door. He put on the light, opened the door, and there stood a luscious co-ed, clad in sheer shorty pyjamas.

"Do you want me?" he said, somewhat surprised.
"Not especially," she said, "but I drew you."

FROM THE CANADIAN CONSUMER LOAN ASSOCIATION: "For years, the schools have taught people how to earn money but we have never taught them how to spend it wisely."

THE PROPOSAL: The aging movie star was proposing to the starlet, but she didn't seem to grasp his meaning.

"Don't you understand, my dear?" he persisted. "I want to marry you; I want you to be the mother of my children."

The naive young lady replied after a thoughtful pause. "I really don't know what to say. How many children do you have?"

SPEAKER OF THE BRITISH HOUSE OF COMMONS: "The office of speaker is unique. The Speaker listens to the speeches of all Members, and there can be no greater sacrifice."

SOLUTIONS TO MARITAL PROBLEM, BY JOHN J. ANTHONY: "Definitely, it is most dangerous to have a husband take a mistress. I will tell you why: A man is more forgiving than a woman. The husband will forgive the wife's lover. Not one marriage in a million will survive a mistress in the other corner of the triangle."

VICE-PRESIDENT KAPWEPWE OF ZAMBIA: "Women who wear wigs are to be reprimanded because they are going round with dead men's spirits on their heads."

U.S. LABOR MEDIATOR, T. KHEEL: "The dirtiest question you can ask in bargaining is 'What will you settle for?' If you ask the question, you ought to resign; but that's the question you must have an answer to. You get it by asking every question except that. What's left over is the answer."

THE PANHANDLER: "I don't believe a word of your hard-luck story, snapped the pedestrian to the panhandler. "If you really want my opinion, it has a hollow ring."

But, sir," came the reply, "that's because I'm speaking on an empty stomach!"

BANGOR DAILY NEWS ON BOATS: "A boat is called a She because there's always a great deal of bustle about her, because there's usually a gang of men around her, because she shows her topsides, hides her bottom, and when coming into port always heads for the buoys."

OLD FAITHFUL: "Oh God," the man mourned, "what a tragedy! I had everything a man could want. I had a beautiful home, plenty of money, the love of a good, passionate and wealthy woman. And then one morning - Bang! My wife walked in."

U.S. JOURNAL OF MEDICINE: "How much of the surgery done on this continent is necessary? When one reads the number of hysterectomies fell by 75%, appendectomies by 60% and hemorrhoidectomies by 35% when the United Mine Workers introduced a caluse in heir medical coverage plan requiring specialist consultants before any operation, the question became more than academic."

We at Wabush Yamaha Centre wish to inform the residents of Labrador City and Wabush that we are the only authorized Yamaha Motorcycle and Outboard Motor Dealer in this area. "We may not be the largest, but we try to please."

1970 MODELS NOW ON DISPLAY
(financing may be arranged)

OUR NEW HOME IS H2 GARAGE, behind
35 Dunfield Street, Wabush.

 **YAMAHA**



CALL CHUCK AT 282-8651

(we also handle, Bell Helmets, Pioneer Chain Saws and Brimaco Leather Sportswear)

MARITIME LIFE ASSURANCE COMPANY

HEAD OFFICE HALIFAX

The Company with "Venture Growth"
the modern concept of life protection.

Resident agents in Labrador City,

Ron Brown 944-2294

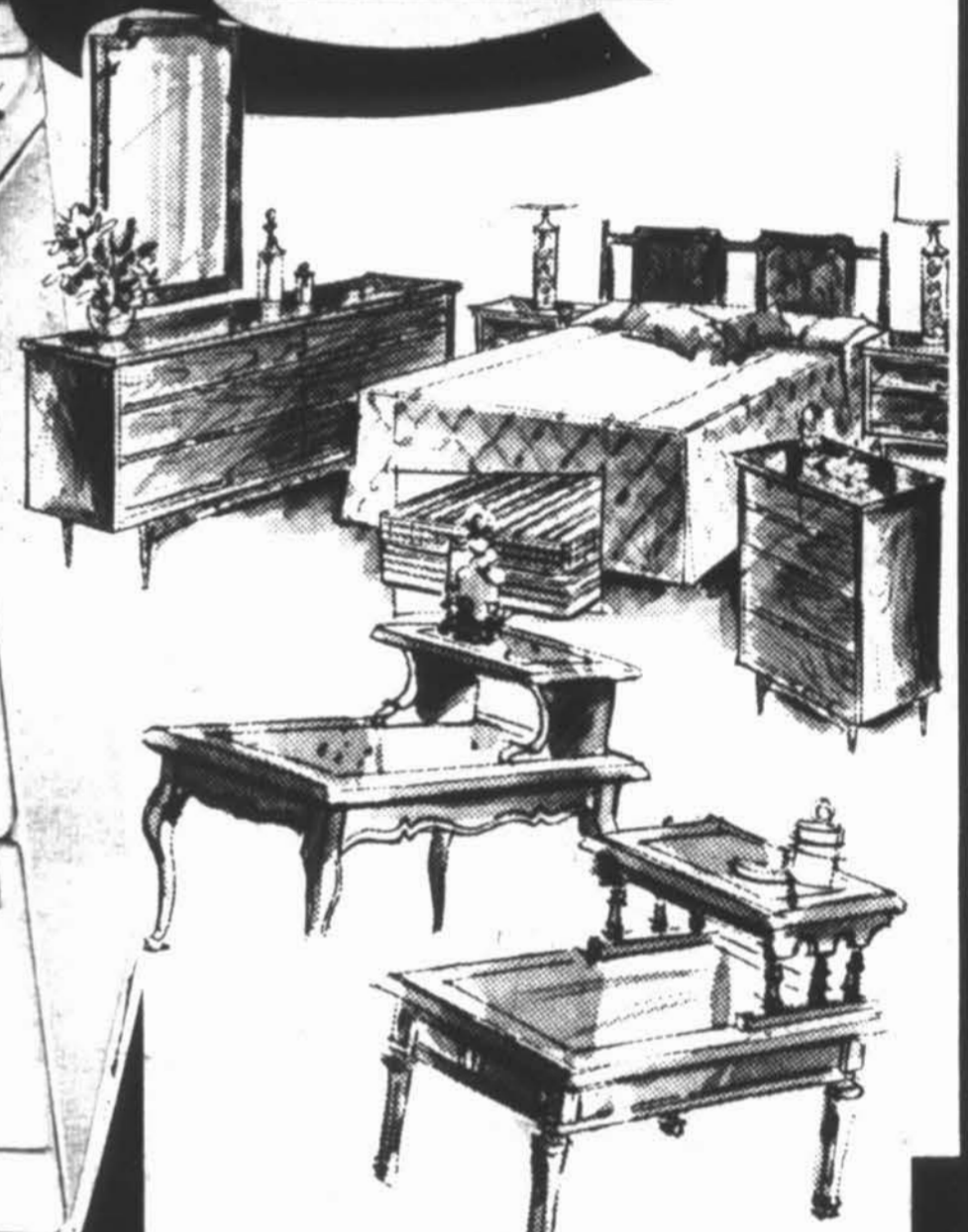
Phil Lozman 944-2666

Branch Office Millbrook Shopping Centre,
Corner Brook, Nfld.

W. Roberts, Branch Manager.

S AYRE'S brings you a world of latest home fashions ... fresh, colorful new styles that add glamor and comfort to your living ... fabulous selections now ready during our
SEPTEMBER 'BETTER THAN EVER'

SALES



WESTINGHOUSE REFRIGERATOR

Automatic defrost, 2 door refrigerator. 12.6 cubic feet. White only.

\$319.77

SPECIAL

WESTINGHOUSE REFRIGERATOR

10.2 cubic foot compact model refrigerator. White. Buy now and save.

\$218.77

SPECIAL

WESTINGHOUSE AUTOMATIC WASHER

This automatic washer has four settings, water saver control and 14 pound capacity.

\$289.77

SPECIAL

WESTINGHOUSE AUTOMATIC DRYER

Economy heavy duty dryer has three temperature settings for balanced air flow drying.

\$189.77

SPECIAL

WESTINGHOUSE AUTOMATIC RANGE

Save now on this 30" Westinghouse automatic range. White.

\$229.77

SPECIAL

WESTINGHOUSE AUTOMATIC RANGE

Westinghouse 24" automatic range, very compact. White.

\$188.77

SPECIAL

SOME ITEMS NOT EXACTLY AS ILLUSTRATED

CHROME SET

A group of slightly damaged chrome sets. Assorted.

1/3 OFF REG. PRICES

REG. 99.95 - 229.95

14 PCE. BEDROOM SUITE

This set includes double dresser, chest, panel bed, mattress, box spring, 1 bed lamp, 2 sheets, 2 pillows, 2 pillow cases, 1 blanket and 1 bedspread.

\$266.77

END TABLES

Slightly damaged end tables now reduced.

\$9.88

REG. 15.00

TAPE RECORDERS

Save on Sony tape recorders now reduced by twenty-five percent.

REG. 95.00 - 549.95 **25%** OFF REG. PRICES

Ayre's
 IN THE WABUSH SHOPPING PLAZA