

**MERIT** INSURANCE COMPANY  
 All Canadian Coast to Coast  
 DEPENDABLE PROTECTION  
 • Complete Coverage  
 • Low Rates  
 • Fast Fair, Friendly Claim Service  
 Our Policy is your Protection  
 Labrador Representative  
**GORDON MANSTAN**  
 768 Stirling Crescent  
 944-3301



# The Aurora

The weekly newspaper of Labrador West

Vol. 2 No. 26

AURORA, LABRADOR, SEPTEMBER 30, 1970

PRICE 10 CENTS



The new executive of the Labrador West Branch of the Newfoundland Teachers' Association. From left to right. Jim Dunn, Past President, Paul Mackey, president, Jim Moore, Vice-President, Mary White, secretary-treasurer, Clar Doyle, communication officer. The first meeting of the Association for the current year, was held at the Carol Curling Club on Thursday, September 24, 1970.



Members of the "Roadrunners". Team winners of the Wabush Industrial Softball League. Several players were absent from this photo. (See details in "Speaking of Sports," inside this Aurora).

**Down with the high cost of home repairs! Make yourself an expert! Start your step-by-step "HOW TO" library today!**

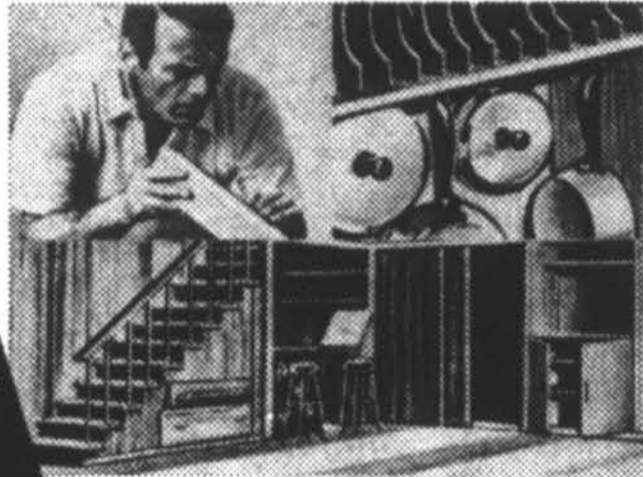


**Build your set a volume at a time**

- 16 fact-packed books
- over 3,000 pages
- more than 6,000 illustrations, diagrams and charts
- easy step-by-step instructions
- thousands of modern, money-saving home improvement, repair, and decorating ideas.



Do it yourself for better living, now!



**START YOUR SET TODAY!**

Now you can get things done and save at the same time



**The family handyman DO-IT-YOURSELF ENCYCLOPEDIA**

VOLUME 1 ONLY **59¢** VOLUMES 2 THROUGH TO 16 ONLY **\$1.79**

VOLUME 1 ON SALE WEEK OF SEPT. 14TH-19TH.

UNE AUTRE RAISON pour devenir CLIENT de Chez DOMINION!

**PLATS a FOUR**

Blancs Resistants a la Chaleur Commencez votre serie cette semaine!

Royale Assorted Colours Pqt. **TOWELS** Jumbo Pkg. **49¢**

Essuie-Tout-Royale Braeside Canada 1st Grade **BUTTER** lb. **72¢**

Beurre-Braeside Canada 1ere Cat. Domino Tomato Bout. 20 oz. **KETCHUP** Btle. **33¢**

Aux Tomates-Domino Ideal-Canada No. 1 4 **PEAS** No. 4 19 oz. tins **99¢**

Pois No. 4—Ideal-Canada No. 1 Scotian Gold-Fruit Flavours 48 oz. **DRINKS** tins 2 Btes **87¢**

Brevages aux Fruits-Scotian Gold MacLean's Reg. or Spearmint **TOOTHPASTE** Dentifrice Format MacLean Fam. Regulier ou Size a la Menthe **95¢**

**FRESH FRUITS & VEGETABLES! FRUITS & LEGUMES TOUJOURS FRAIS!**  
From California U.S. Canada No. 1

**RED TOKAY GRAPES RAISIN ROUGE**  
Tokay-De la Californie E.U. Canada No. 1 GROSSES GRAPPES LARGE CLUSTERS lb. **39¢**

Quebec Grown Canada fancy Grade **McINTOSH APPLES** 5 lb. **89¢**  
Pommes McIntosh—Du Quebec Canada de fantaisie

Quebec Grown-Canada No. 1 Crunchy 24's ch. **PASCAL CELERY** ea. **33¢**  
Celeri Pascal-Du Quebec-Canada No. 1—Grosueur 24

**CENTRE D'ACHATS CAROL LAKE SHOPPING CENTRE, LABRADOR CITY et-and WABUSH PLAZA, LABRADOR**

We reserve the right to limit quantities! Nous nous reservons le droit de limiter les Quantites! Prix en vigueur jusqu'a la fermeture Sam. 3 Oct. 1970 Prices effective until closing Sat. Oct. 3rd., 1970

**WHEN YOU SHOP AT DOMINION -You Go Home Happy!**

Canada Fancy **DOMINO TOMATOES** 2 Btes 19 oz. tins **59¢**

Tomates Domino-Canada de Fantaisie Maxim Freeze Dried **INSTANT COFFEE** Pot 8 oz. Jar **\$1.89**  
Cafe Instantane-Seche a Froid-Maxim

**IT'S MAINLY BECAUSE OF THE MEAT!**

Government Inspected-Young-Tender **FRESH PORK LOINS LONGES de PORC Frais**



Jeune-Tendre-Inspecte par le Gouvernement **BOUT DES COTES RIB END** lb. **68¢** **BOUT DU FILET FILLET END** lb. **78¢**

Center Cut-Meaty **FRESH PORK CHOPS** lb. **\$1.15**

Cotelettes de Porc-Frais-Coupe du Centre Tender-Front **VEAL ROLL** lb. **99¢** Maple Leaf **SAUSAGES** lb. **59¢**  
Devant de Veau Roule Saucisses Maple Leaf Hygrade Chicken-Olive Pqt. 6 oz. Pkg. **LOAF** **33¢**  
Maple Leaf-Rindless Pqt. 1 lb. Pkg. **BACON** **83¢** Sans Couenne-Maple Leaf Pain de Poulet-Olive Hygrade

# On the local scene

During August 1970, Eastern Provincial Airways carried a total of 31,646 passengers as compared to 22,342 for the same period in 1969. To the end of August a total of 155,309 passengers have been carried in 1970, while 93,004 were carried in the first eight months of 1969.

the proposed co-op store has been requested on the Avalon Drive entrance to Labrador City, near the creek. At this writing a definite decision has not been made.

The first fatality on the Mount Wright operation was recorded late last week when a Northern Wings helicopter crashed near the construction site. Of the three occupants, one was killed and two hospitalized

According to information available at press time, land for

suffering serious injuries.

The 1970 housing program at Wabush is making satisfactory progress. Approximately half of the planned 55 units have been completed, with the remainder on schedule.

The Canadian Army is not setting-up a field base in the area. Two army vehicles seen on local streets last week have been purchased by Hussey Engineering and the Town of Labrador City.

Notice from the Wabush Recreation Center. MEN: ARE YOU OUT OF SHAPE? Register now at the Wabush Recreation Center for a Physical Fitness Program commencing on October 14, 1970. A qualified instructor will lead classes. Two nights weekly. Pool, sauna, and shower facilities included in the 11 week course, at a cost of \$10.00. For further information contact the Wabush Rec. Center.

Negotiations between U.S.W.A. No. 6204 and Crawley McCracken and U.S.W.A. No. 7721 and MCN Ltd. are reportedly progressing satisfactorily and in both cases agreements are expected to be signed shortly.

The Catholic Women's League of Wabush will be holding their monthly meeting on Sunday, October 4, 1970.

Effective immediately the Labrador City library hours are as follows: Monday - Wednesday - Friday - 7.00 p.m. to 9.00 p.m.; Tuesday - Friday - 2.00 p.m. to 5.00 p.m. Saturday - 10.00 a.m. to 1.00 p.m. Would persons with overdue library books PLEASE return them during the above hours. Others are waiting for these books.

# K. of C. holds its Fall meeting

The Annual Fall Meeting of the Newfoundland and Labrador State Council Knights of Columbus was held in Grand Falls on a recent weekend.

Sessions got underway with welcome remarks by the State Deputy Fintan J. Aylward. He then gave a resume of the State Meeting held in New Haven, Conn. in June and the Supreme Convention held in Houston, Texas in August.

Mr. Aylward also announced the Newfoundland Winners in the Contest of Champions for 1969-70. First Section Winner (highest addition of members over suspensions) Terra Nova Council 1452, St. John's; Second Section Winner (highest percentage addition of members over suspensions) Cabot Council 6001, Avondale - 177%.

The Six Point Program was outlined in detail by Leo J. Mahoney, State General Program Chairman. A talk was also given by Kevin F. Dormody, State Public Relations Chairman.

A meeting of the various Six Point Program chairmen was followed by a general meeting. Many matters pertaining to the Order were discussed. An address was given by State Advocate John Murphy of Labrador City.

This session concluded at 5:30 p.m. with Mass in the Council Chamber celebrated by State Chaplin Msgr. E.J. O'Brien.

On Sunday morning during Mass the State Officers were installed by the State Chaplin. Installed were Fintan J. Aylward, State Deputy; Bernard Foley, State Treasurer; John Murphy, State Advocate and John Dunphy, State Warden.

State Treasurer John F. Byrd was unavoidably absent and John Power was installed on his behalf.

The delegates from the thirteen councils and the State Officers returned to their homes Sunday afternoon.

The State Convention for 1971 will be held in May in Corner Brooks

# Adoption program is underway

Plans for 1970 Children's Crusade-Adoptions Program are underway. Invitations have gone out to the heads of the province's principal denominations to send representatives to a meeting in the office of the Minister of Social Services and Rehabilitation, Stephen A. Neary, on Tuesday, October 6.

There, Mr. Neary states, he will be placing before the inter-denominational group the evidence of the impact upon adoptions in this province of the wonderful co-operation given a year ago by the Clergy of all denominations throughout the province.

"I will also, of course," said the Minister, "have to indicate the seriousness still of the need to find homes and parents for the hundreds of children, wards of the government, at this moment maintained in foster homes throughout the province."



## Scout Apple Day Oct. 3

For a boy, Scouting is fun. It is hiking and camping, playing games, developing skills, finding interesting things to do and to be. But the founder of Scouting, Lord Baden-Powell of Gilwell, had a higher aim for the movement than merely having a fun program for boys. Through the various activities he hoped boys would develop certain qualities -- and enjoy doing it. He wanted Scouting to develop men who were honest, dependable, energetic, adventurous, cheerful, friendly, self-reliant and self-disciplined -- men who would be a credit to their families, to their country, and to God.

Scouting has always discouraged begging by its members, and has stressed instead the virtue of earning. However, in order to carry on the Scout program a great deal of money is needed for equipment and supplies. The boys and their families contribute much of this money, several generous benefactors also help. But once each year in Canada, Scouting appeals to the public for financial help through Scout Apple Day.

Please do your part in helping Scouting develop the kind of people it aims for. On Saturday, October 3, buy a Scout Apple, and help the Scouts help themselves.

Rev. W.J. Bellamy, Local Commissioner.

# TIME WAS..

when average life expectancy was 22 yrs.



Back in the days of the Roman Empire, people only lived a short time. Today in the United States, life expectancy is 70 years!

**CITY DRUGS LTD.**

SHOPPING CENTER - LABRADOR CITY  
TELEPHONE 944-2448 or 5395

# Dixie Lee Fried Chicken TAKE-HOME MENU

Sir Wilfred Grenfell Hotel

WABUSH



|  |  |   |
|--|--|---|
| IF YOU LIKE CHICKEN — YOU'LL LOVE DIXIE LEE  |  |   |
| <b>DIXIE SNACK</b><br>2 Pcs chicken with french fries<br><b>\$1.05</b>                         | <b>DIXIE DINNER</b><br>3 Pcs chicken, french fries cole slaw and roll<br><b>\$1.55</b> | <b>ECONOMY BOX</b><br>10 Pcs chicken<br><b>\$3.60</b>                     |
| <b>DIXIE BUCKET</b><br>(4-6 Persons)<br>12 Pcs chicken french fries and rolls<br><b>\$4.95</b> |  | <b>DIXIE BARRELL</b><br>(7-10 Persons)<br>20 Pcs chicken<br><b>\$5.95</b> |

NO WAITING

Phone 3221

FAST SERVICE

# The Aurora

Published every Wednesday at Labrador West, Newfoundland and Labrador and printed by Robinson-Blackmore Printing and Publishing Limited, O'Leary Avenue, St. John's, Newfoundland. Subscription rate Canada and Foreign \$6.50. Mailing address, P.O. Box 2090, Labrador City.

## Editorially speaking

Effective today ownership of the Aurora has been purchased by Advance Enterprises (Charles S. Devine, sole owner). The paper will continue to be printed by Robinson-Blackmore Ltd., St. John's, Nfld. Commencing with the next issue, October 7, 1970, all printing charges, advertising invoices, local billings, etc., will be issued from and received by Aurora, P.O. Box 2090, Labrador City, Nfld. Aurora is now strictly a local paper edited and published in Western Labrador.

To our advertisers and prospective advertisers: Owing to our rather lengthy purchase negotiations we have been negligent in maintaining contacts with our regular customers. Regarding our prospective advertisers, we will be mailing rate cards to all business enterprises in the area within the next few days; and after visiting our regular advertisers, will be contacting you later this month. Mr. Advertiser, Aurora has at present a paid weekly circulation of approximately 1,600 copies which covers over 70% of the adult population of Labrador City-Wabush and has the largest weekly distribution in Labrador. Our objective locally is 2,000 copies by year-end. In addition we have been in contact with Mt. Wright and Churchill Falls and both have expressed interest in having the Aurora distributed in their areas. I'm sure you will find it pays to advertise in the Aurora.

To those who purchase Aurora each week we wish to apologize for the lack of local news in recent weeks. A lady correspondent has been appointed in Wabush to cover social and personal news. We are now seeking a lady for Labrador City coverage. I would request the various sports leagues to keep us informed of special events, league standings, etc. On our part we hope to extend local coverage with court, club, school, political news, etc., and welcome any suggestions or submissions.

Arrangements are being made to have Aurora "drop-off boxes" installed throughout both shopping centres. These will be cleared after 6:00 p.m. every Friday and material inserted in the following issue.

Over the past weeks I have felt that Labrador City-Wabush, with a population of approximately 12,000 could certainly support a weekly publication. A paper that would be edited and published as a full-time operation. I have made this decision and with the support of local advertisers and the general public, will make Aurora a weekly the area can be proud of.

— (Charles S. Devine)

## Will seek nomination

Wabush businessman Peter Walsh has announced his intention to seek the Progressive Conservative nomination for the district of Labrador West. A nominating convention will be held in that district on October 8th and 9th in Labrador City and Churchill Falls.

Mr. Walsh is the Labrador vice-president of the Progressive Conservative Association of Newfoundland. He is the immediate past-president and founder of the Labrador West P.C. district association and played an important role in the campaign of Ambrose Peddle, the MP for Grand Falls-White

Bay-Labrador in the 1968 Federal election.

Mr. Walsh is the president and managing director of Wabush Transportation Limited and is the vice-president of the Carol-Wabush Distributors Limited. Prior to taking up residence in Labrador he served nine years in the Canadian Army. He held various supervisory positions with both the Iron Ore Company of Canada and Wabush Mines before branching out into business on his own.

Mr. Walsh is married and the father of four children. He is a native of Lamaline.

## Here 'n' There

**RELIGIOUS BOOKS IN SCHOOLS:** Religious education is still a major factor in Newfoundland schools, despite the trend elsewhere. Of the more than one million textbooks ordered by the Newfoundland Government for use in the schools this year, over 150,000 are religious textbooks. This is the first year that the churches have ordered religious textbooks through the Government. There are textbooks for all denominations for use up to grades 8 and 9. All textbooks are supplied at half price. The cost to the Government this year is over \$1 million.

**WINE & T. EATON CO.** What's this? Is good and gray old T. Eaton Co., really selling all the gear and ingredients for making homemade wine? Yes, indeed. And isn't Timothy Eaton, the store's puritanical founder, consequently turning uneasily in his grave? Not necessarily, says an Eaton executive, primly and patiently explaining why the store sees nothing immoral or unprincipled about its newly issued mail-order brochure for wine making kits. That's not at all the same as selling wine itself: "After all, we don't sell tobacco either, but we sell pipes and ash trays."

**POLICEMEN SUSPENDED FOR TAKING NAPS:** Twelve Laval policemen were placed under brief suspensions, earlier this month, for sleeping or loafing on the job. Nine received one day suspensions without pay. The three others were suspended for three, five or ten days. Police Chief Lequin refused to comment because the orders came from the city's executive committee rather than the police department. Dr. Paiement, a member of the Laval executive committee, described the suspensions as "a reprimand for those who were caught loafing on the job and a warning to any others who may have similar ideas." He said most of the suspended constables were caught napping in patrol cars or police stations. Laval, Quebec's second largest city, has a

325 force to provide police protection for its 250,000 residents.

**CENSOR RESIGNS:** Jack Day, acquitted in July on a charge of incest and another charge of indecent assault, has resigned as Alberta film censor. The provincial Government offered a monetary settlement in return for his resignation, Mr. Day said last week.

**GAMBLING IN ONTARIO:** Restrictions on bets and playoffs in games of chance in Ontario will be loosened next year, an official in the Financial and Commercial Affairs Department indicated recently. Gamblers are limited to a 50-cent bet and promoters to a \$2 payoff under present regulations.

**SKYSCRAPER BOOM IN TOKYO:** Tokyo is growing up. For many years, no building in that city was permitted to be so tall that it overshadowed the Imperial Palace grounds on its slight hill in central Tokyo. This restriction was lifted early in the 1960's, and a skyscraper boom is gathering momentum. A 36-storey building was opened several years ago. This spring, the 40-storey World Trade was completed, and a 47-storey hotel will be completed next June. Tokyo is earthquake prone and the engineers have kept this hazard in mind. The World Trade Centre is designed with a flexible structure that should withstand a quake three times as great as the massive 1923 quake which levelled much of the city. The trade centre has also been designed to withstand another Tokyo hazard, typhoons. It will take winds stronger than ever before recorded to blow out the building's window panes.

**COST OF "FRINGES":** The money employers spent on employee benefits amounted to 27.9% of payrolls in 1969, compared with 26.6% in 1967, according to the biennial survey of the Chamber of Commerce of the United States. The fringes averaged 98.3 cents per payroll-hour last year, against 82.2 cents in 1967.

**FROM THE ATLANTIC PROVINCES OUTPUT AND INCOME PAMPHLET:** Among the tables provided is one giving estimates of the gross provincial product in constant (1961) values over a period of ten years. The Newfoundland figures begin with an amount of \$414 million for 1958 and increased to \$783 millions in 1968. Comparative figures for P.E.I. are \$104 million going to \$188 millions; for New Brunswick \$744 million to \$1.217 billion; and for Nova Scotia \$1.042 billion to \$1.626 billion.

**TOURISTS STOCK UP ON WEAPONS:** Quite a number of U.S. visitors, especially from New York State, where laws governing them are quite strict, are stocking up on lethal weapons during their stay in Montreal. One store, with a window display of switch-blade knives and starters' pistols, is doing a land-office business. The pistols are chambered so they will take a .22 calibre bullet, deadly if mushroomed at close-up range.

**C.B.C. BUILDING IN VANCOUVER:** CBC president George Davidson announced last week that approval had recently been given for construction of a \$20 million radio-television building in Vancouver. The new studio will permit consolidation of the CBC's English and French language radio operations and the English language TV facilities in Vancouver. Eventual inclusion of a French language TV station will also be possible, Mr. Davidson said.

**STEEL COMPANY GETS LOAN:** A loan from the Export Development Corporation has provided Lake Ontario Steel Co. with the chance to break into the British steel market. In an unusual step for a country where the steel industry is nationalized, the government invited LASCO to set up a mini-mill to produce steel from scrap in England. About half of the \$30 million for the project will be spent on Canadian equipment, most of it produced in Quebec and the Maritimes, areas in need of the kind of boost the contracts will generate.



# HARVEST OF VALUES FROM AYRE'S IN WABUSH



### MEN'S SPORT & DRESS SHIRTS

Tremendous savings on Men's Half Sleeve shirts in a wide selection of shades. Values to 6.00

Special **\$1.66**

### BOYS' PULLOVERS

Smart bulky pullovers in assorted styles and colours. Sizes S M L.

Special **\$4.97 \$5.44**

### MEN'S BULKY SWEATERS

Exceptional value on men's crew neck sweaters. Assorted colours...in sizes S-M-L.

Special

**\$7.97**



### MEN'S NYLON SOCKS

Men's 100% Nylon textured stretch socks - machine washable.

Reg. \$1.50

Special **77c**

### BOYS' BULKY SWEATERS

Crew neck sweaters, in a variety of colours...an outstanding buy!

Special

**\$3.97**

### MEN'S BULKY SWEATERS

Save on men's all wool, crew neck sweaters. Choose from gold, green, navy blue, etc...sizes S-M-L.

Special

**\$9.44**



### BOY'S DENIM JEANS

Popular Western Jeans...reinforced at points of strain.

EXTRA SPECIAL **\$4.66**

### BOYS' FLAIR PANTS

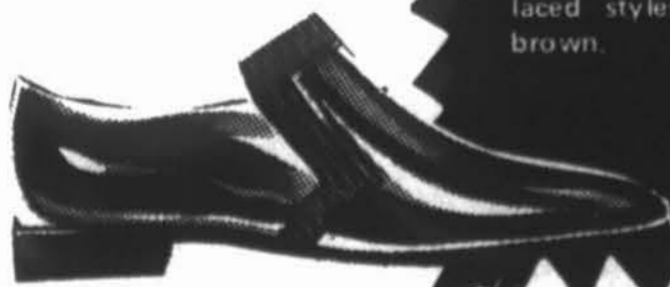
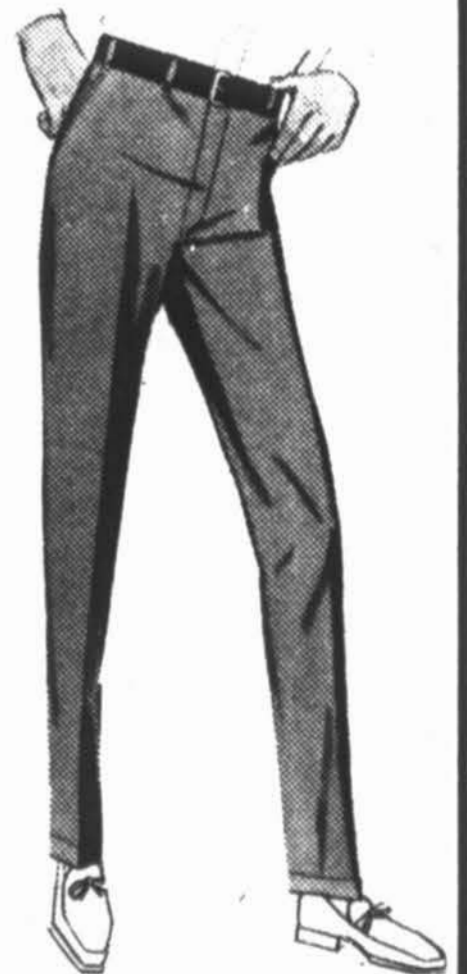
Boys' casual flair pants, with 1/2 boxer waist...brown, blue or green stripes.

Special **\$2.47**

### BOYS' FLAIR PANTS

Boys' casual flair pants in assorted stripes...brown, green, blue.

Special **\$2.97**



### MEN'S SHOES

Men's dress Shoes and Casual Shoes. Slip on and laced styles...in black or brown.

**\$9.97**

### MEN'S FLAIRS

Save on men's casual flairs...in assorted plaids, grey, brown, green, etc.

SPECIAL

**\$11.97**

### MEN'S WORK SHIRTS

Men's sturdy work shirts...100% fine cotton...excellent value.

Special **\$2.47**

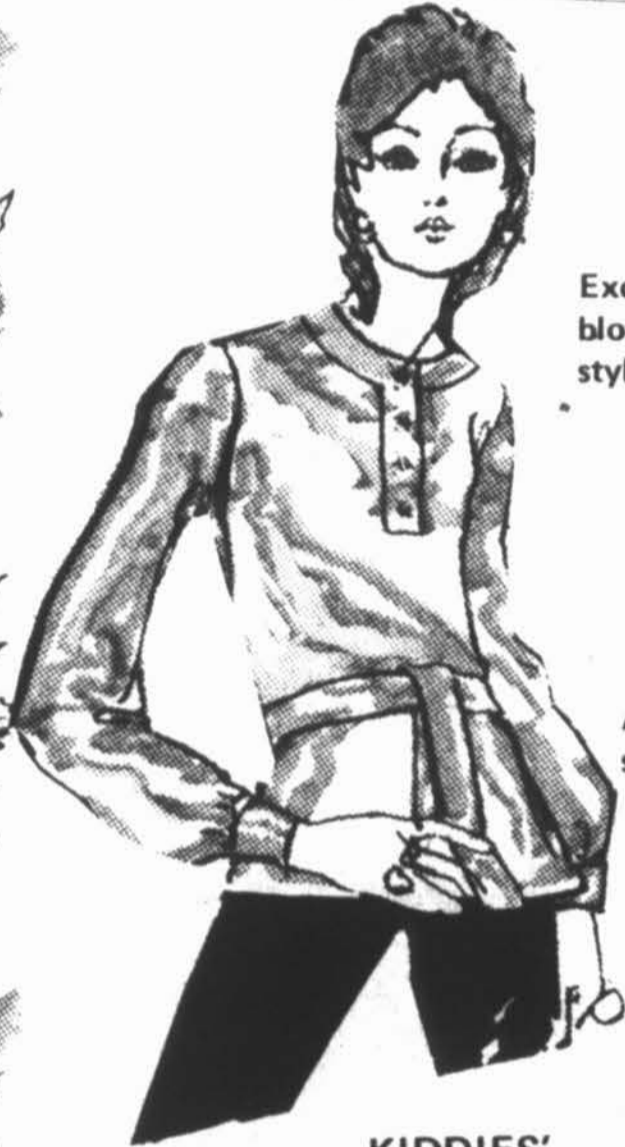
# AYRE'S

WABUSH SHOPPING PLAZA SHOPPING HOURS:

MON. - TUES. - WED. - SAT. 9a.m. - 6p.m.

THURS. - FRI. 9a.m. - 9p.m.

# HERE COMES AUTUMN



## LADIES' BLOUSES

Excellent value.....pretty Fall blouses in a wide selection of styles and colours.

**\$3.88**

## LADIES' BRIEFS

Assorted pastels and shades in sizes S-M-L.

**77c** pr.

## LADIES' DUSTERS

Dainty styles in lovely pastel shades. Terrific savings, sizes S-M-L.

**\$7.99**

## LADIES' GIRDLES

This is a super special! Ladies' regular and panty girdles in broken sizes.

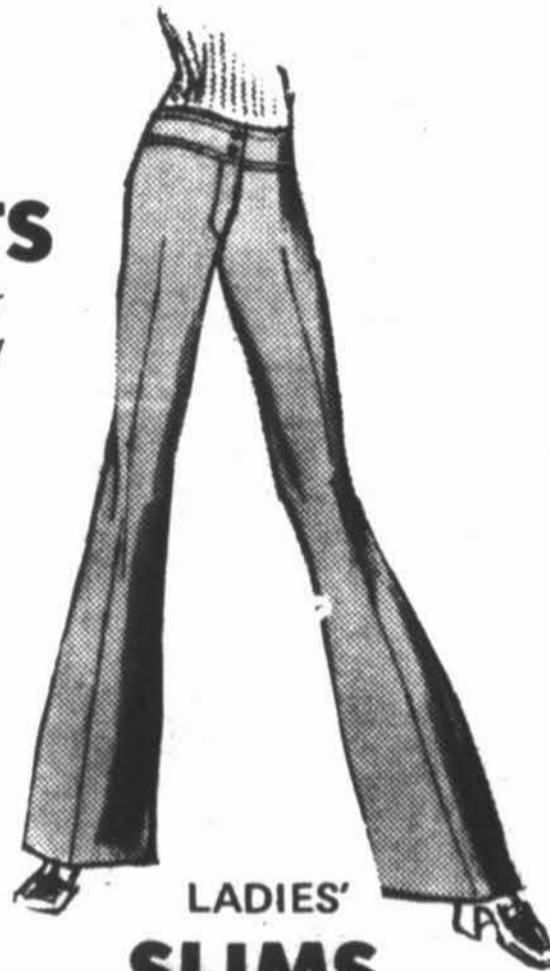
**\$2.29**



## KIDDIES' CORDUROY PANTS

Save on durable Corduroys, for rough and ready kids. In a variety of colours and sizes.

**88c** pr.



## LADIES' SLIMS

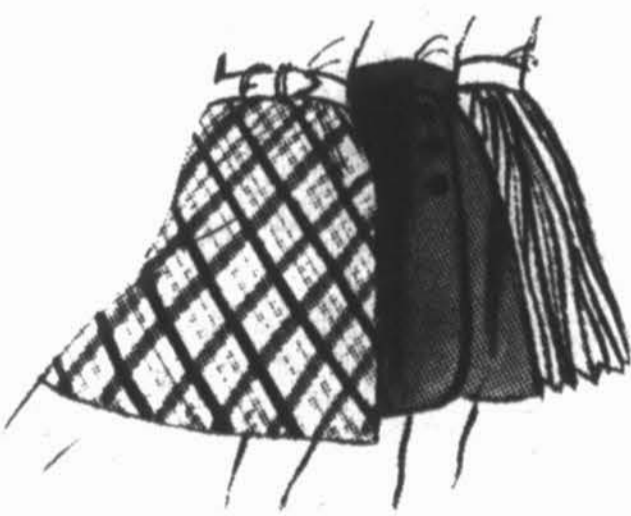
Choose from many styles and colours. Sizes 8 to 16.....while they last.

**\$6.88**

## LADIES' SKIRTS

Great value! In assorted styles, pattern and colours. Sizes 8 to 16.

**\$2.88**



## LADIES' SKIRTS

Many styles and patterns in a variety of attractive colours. Sizes 8 to 16.

**\$4.88**

## GIRLS' ACRYLIC SLIMS

A big selection of girls' bonded acrylic slims, sizes 7 to 14.....a real bargain.

**\$3.88**

## LAY-A-WAY

NOW FOR

## CHRISTMAS

## LADIES' PANTY HOSE

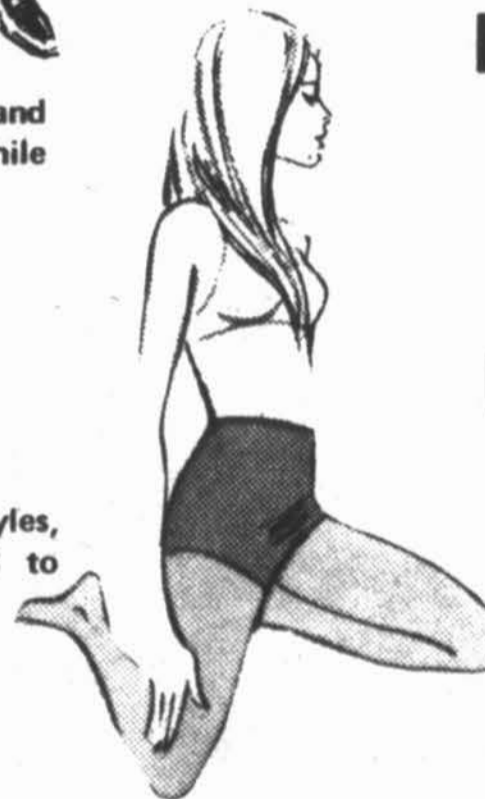
Save on Ladies' One-size Panty Hose in assorted shades.

**57c** pr.

## PANTY HOSE

Ladies' panty hose....one size, in various shades.

**67c** pr.

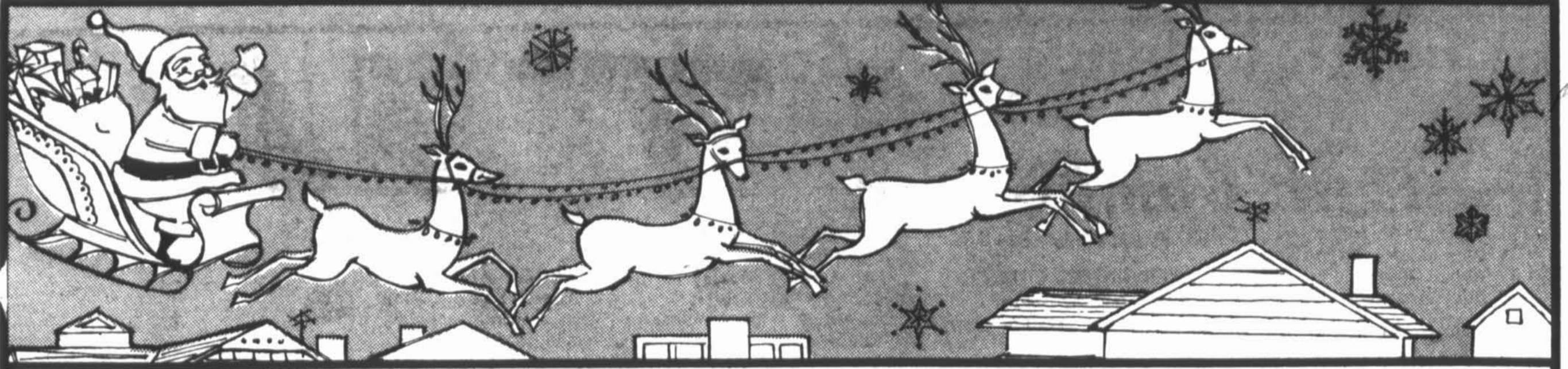


# AYRE'S

WABUSH SHOPPING PLAZA SHOPPING HOURS:

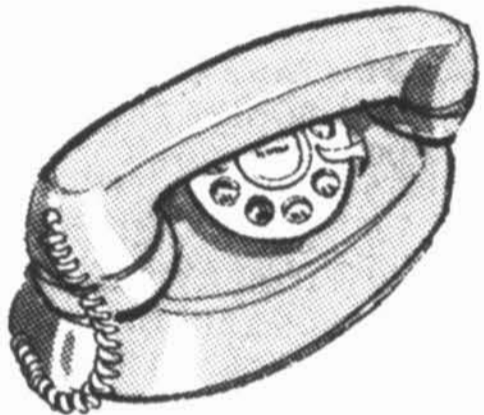
MON. - TUES. - WED. - SAT. 9a.m. - 6p.m.

THURS. - FRI. 9a.m. - 9p.m.



**PRE — TOYLAND OPENING**

# 88<sup>c</sup> TOY SALE



|                                |                       |                      |                       |                       |                       |
|--------------------------------|-----------------------|----------------------|-----------------------|-----------------------|-----------------------|
| GO—GO<br>DOLLS                 | <b>88<sup>c</sup></b> | HI—CHAIR             | <b>88<sup>c</sup></b> | DOLL WITH<br>CRIB     | <b>88<sup>c</sup></b> |
| PRINCESS<br>STYLE<br>TELEPHONE | <b>88<sup>c</sup></b> | TUGBOAT              | <b>88<sup>c</sup></b> | CHRISTMAS<br>STOCKING | <b>88<sup>c</sup></b> |
| LOCOMOTIVE                     | <b>88<sup>c</sup></b> | CAP GUN              | <b>88<sup>c</sup></b> | DOLLS                 | <b>88<sup>c</sup></b> |
| SKI MOBILE                     | <b>88<sup>c</sup></b> | UKELELE              | <b>88<sup>c</sup></b> | PACKAGED<br>PHONES    | <b>88<sup>c</sup></b> |
| TOMMY GUN                      | <b>88<sup>c</sup></b> | SAUCER<br>GUN        | <b>88<sup>c</sup></b> | TOOL SET              | <b>88<sup>c</sup></b> |
| PACKAGED<br>BLOCKS             | <b>88<sup>c</sup></b> | DOLL<br>CARRIAGE     | <b>88<sup>c</sup></b> | SLEEPY<br>TIME<br>SET | <b>88<sup>c</sup></b> |
| TEA TIME<br>SET                | <b>88<sup>c</sup></b> | SLIDE<br>A<br>PUZZLE | <b>88<sup>c</sup></b> | VANITY<br>SET         | <b>88<sup>c</sup></b> |
| LITE<br>—O—<br>GAME            | <b>88<sup>c</sup></b> | RACER<br>PULL TOY    | <b>88<sup>c</sup></b> | PUZZLES               | <b>88<sup>c</sup></b> |

# AYRE'S

WABUSH SHOPPING PLAZA SHOPPING HOURS:

MON. - TUES. - WED. - SAT. 9a.m. - 6p.m.

THURS. - FRI. 9a.m. - 9p.m.

# Church Calendar

# Social calendar

**OUR LADY OF PERPETUAL HELP**  
 Rev. F. Lemire, Rev. T. Laperriere O.M.I.  
 9:00 a.m. - Mass  
 11:00 a.m. - Mass  
 5:00 p.m. - Mass (French)  
 7:00 p.m. - Mass  
 Weekday Masses

**OUR LADY OF ASSUMPTION (WABUSH)**  
 Rev. Jos. Blouin, O.M.I.  
 10:00 a.m. - Mass  
 7:00 p.m. - Mass  
 Weekday Masses 5:00 p.m.

**PENTECOSTAL CHURCH GLAD TIDINGS**  
 Pastor Gillett  
 11:00 a.m. - Morning Worship  
 3:00 p.m. - Sunday School  
 7:30 p.m. - Evangelistic Service  
 Tuesday, 8:00 p.m. - Prayer Meeting

Saturday, Young People's Meeting.

**ST. PETER'S ANGLICAN CHURCH**  
 Rev. W.J. Bellamy  
 11:30 - Morning Prayer

**CAROL UNITED CHURCH**  
 Rev. Wm. Mayberry  
 10:30 a.m. - Sunday School (Kind. - Prim. - Inter.)  
 11:30 a.m. - Morning Worship  
 11:30 a.m. - Junior & Nursery  
 7:15 p.m. - Evening Worship

**SALVATION ARMY**  
 Lieut. R. Bungay  
 11:00 a.m. - Holiness Meeting  
 2:30 p.m. - Sunday School  
 7:30 p.m. - Evangelistic Service  
 Thursday, 7:30 p.m. - Band Practice  
 8:00 p.m. - Home League

**CHRIST CHURCH (WABUSH)**  
 Rev. J.B. Dickey  
 9:45 a.m. - Church School  
 11:00 a.m. - Morning Worship  
 Serving the United, Baptist and Presbyterian families of Wabush.

**ST. PAUL'S ANGLICAN CHURCH**  
 Rev. W.J. Bellamy  
 8:00 a.m. - Holy Communion  
 10:00 a.m. - Morning Prayer

**ASHUANUPI SOCIAL CLUB:**  
 October 1 - Movie "Decline and Fall of a Breadwinner"  
 October 2 - Ladies Softball Banquet  
 October 3 - Dancing to the music of the "Krystals"  
 October 4 - Dancing to the music of the "Krystals"  
 October 5 - Movie "Wild in the Country"  
 October 6 - Games Night  
 October 7 - Movie "Buster Keaton Story"

R.C.L. NO. 47  
**LABRADOR CITY**  
 October 3-4 - Danding to

the music of the "Nfld. Showband"  
 October 7 - Games Night at 8:30, followed by dancing to the "Nfld. Showband"

**O'BRIEN HALL**  
 October 1 - Games Night  
 October 2 - Hard Times Dance. Music supplied by the "Nfld. Showband"  
 Downstairs - K.O. Darts from 7:30  
 October 7 - League Darts. Commencing at 7:30

R.C.L. NO. 57, WABUSH  
 October 1 - Movie.

Commencing at 9:00 p.m.  
 October 3 - Dancing to the music of the "Black Velvet Band" from 9:00 p.m.  
 October 4 - Mixed Darts meeting at 1:45 p.m.  
 October 5 - Dominion Darts at 7:00 p.m.  
 October 6 - Games Night at 8:30  
 October 7 - Movie "Hatari"

**SIR WILFRED GRENFELL HOTEL**  
 October 1 - Movie  
 October 2 - Dancing to the music of the "Nitebeats"  
 October 3 - Dancing to the music of the "Nitebeats"  
 October 4-5-6 - Movies

# Labrador television guide

## WEDNESDAY, SEPT. 30

3:30 - EDGE OF NIGHT  
 4:00 - BONNIE PRUDDEN  
 4:30 - TAKE THIRTY  
 5:00 - HISTORY MAKERS  
 5:30 - ULYSSE ET OSCAR  
 6:00 - BOITE A SURPRISES  
 6:30 - BANANA SPLITS  
 7:00 - GREEN ACRES  
 7:30 - DEBBIE REYNOLDS  
 8:00 - LA BOHEME  
 8:30 - TBA  
 9:00 - MCQUEEN  
 9:30 - COMEDY CRACKERS  
 10:00 - BONANZA  
 11:00 - ALL AROUND THE CIRCLE  
 11:30 - NEWS

## THURSDAY, OCT. 1

3:30 - EDGE OF NIGHT  
 4:00 - TAKE THIRTY  
 4:30 - BONNIE PRUDDEN  
 5:00 - ARTHUR & THE SQUARE KNIGHTS  
 5:30 - BOBINO  
 6:00 - LA BOITE  
 6:30 - BANANA SPLITS  
 7:00 - BILL COSBY  
 7:30 - NATURE OF THINGS  
 8:00 - CHER ONCLE BILL  
 8:30 - A LA BRANCHE D'OLIVIER  
 9:00 - SHOW BIZ  
 10:00 - THURSDAY NIGHT  
 11:00 - NEWS

## FRIDAY, OCT. 2

3:30 - EDGE OF NIGHT  
 4:00 - TAKE THIRTY  
 4:30 - BONNIE PRUDDEN

5:00 - BIRDMAN & GALAXY TRIO  
 5:30 - BOBINO  
 6:00 - BOITE  
 6:30 - WORLD OF MAN  
 7:00 - JULIA  
 7:30 - GREEN ACRES  
 8:00 - MINOS 5  
 8:30 - DONALD LAUTREC  
 9:00 - HERE COME THE STARS  
 10:00 - MISSION IMPOSSIBLE  
 11:00 - NEWS  
 11:20 - FEATURE FILM Go Man Go

## SATURDAY, OCT. 3

3:30 - HI DIDDLE DAY  
 4:00 - KLAHANI  
 4:30 - LAUREL AND HARDY  
 5:00 - LASSIE  
 5:30 - PLEIN FEU L'ADVENTURE  
 6:00 - BUGS BUNNY  
 7:00 - ONCE MORE WITH FELIX  
 7:30 - GALLOPING GOURMET  
 8:00 - ZOOM  
 9:00 - NAME OF THE GAME  
 10:30 - PIERRE JEAN JACQUES  
 11:00 - NEWS  
 11:20 - CINEMA

## SUNDAY, OCT. 4

3:00 - INTERNATIONAL ZONE  
 3:30 - THE GROUP  
 4:00 - MY WORLD  
 4:30 - MUSIC MACHINE  
 5:00 - DONNEZ A VOIR  
 6:00 - WALT DISNEY

7:00 - QUELLE FAMILLE  
 7:30 - ATOMES ET GALAXIES  
 8:00 - ED SULLIVAN  
 9:00 - FORSYTE SAGA  
 10:00 - WEEKEND

## MONDAY, OCT. 5

3:30 - EDGE OF NIGHT  
 4:00 - TAKE THIRTY  
 4:30 - BONNIE PRUDDEN  
 5:00 - SUPER 6  
 5:30 - BOBINO  
 6:00 - BOITE A SURPRISES  
 6:30 - D'IBERVILLE  
 7:00 - GOVERNOR & J.J.  
 7:30 - MUSIC TO SEE  
 8:00 - A LA SECONDE  
 8:30 - MONT-JOYE  
 9:00 - BOLD ONES  
 10:00 - DEBBIE REYNOLDS  
 10:30 - NEW MAJORITY  
 11:00 - NEWS

## TUESDAY, OCT. 6

3:30 - EDGE OF NIGHT  
 4:00 - TAKE THIRTY  
 4:30 - BONNIE PRUDDEN  
 5:00 - H.R. PUFNSTUF  
 5:30 - BOBINO  
 6:00 - BOITE A SURPRISES  
 6:30 - DRESS REHEARSAL  
 7:00 - NFLD. NEWS DIGEST  
 7:30 - THIS LAND  
 8:00 - HAPPY DAYS  
 9:00 - MOI ET L'AUTRE  
 9:30 - RUE DES PIGNONS  
 10:00 - DORIS D'AY  
 10:30 - TBA  
 11:00 - NEWS

**BACKACHE?**  
 Let DeWitt's Kidney & Bladder Pills help you. DeWitt's formula gives fast relief of irritation of the bladder and urinary tract, which could be the cause of backache. 98c and \$1.98 sizes at City Drugs Ltd. and Northern Drugs.

**MEN'S CLOTHING**  
 I specialize in men's made-to-measure suits, sports jackets, slacks and topcoats, from a well known Montreal manufacturer. New cloths from which to choose.  
**JACK WILLIAMS 944-2052**

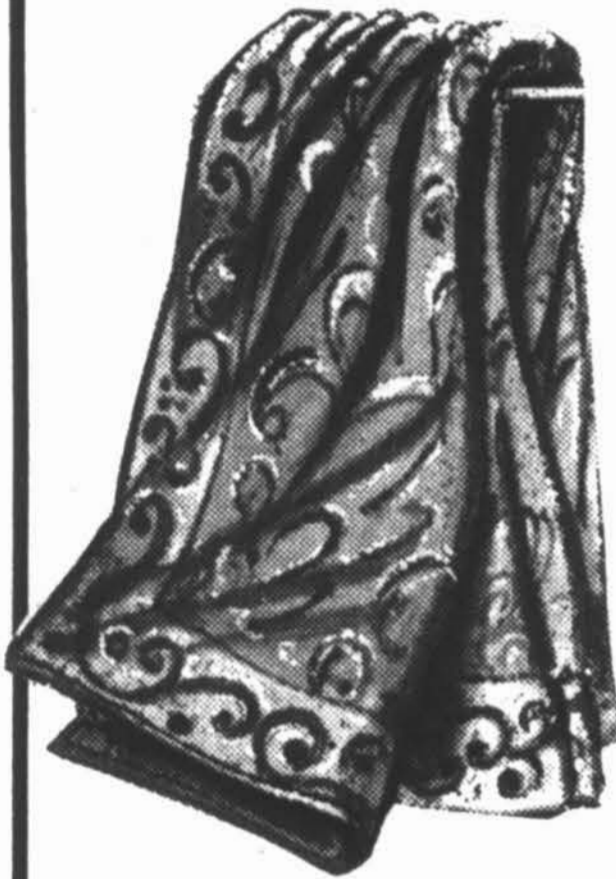
**ARTHUR F. MILLER**  
 AVOCAT - LAWYER  
**SHOPPING CENTRE MALL**  
 LABRADOR CITY  
 OPEN 9:00 a.m. - 5:30 p.m.  
 PHONE MONDAY THROUGH FRIDAY 944-5909

**NOTICE**  
 Effective 1 Oct. 1970. NO PARKING (ANYTIME) signs will be erected on the south side of Avalon Drive, between Marconi Ave. and Drake Ave. BOARD OF TRUSTEES.  
 LOCAL IMPROVEMENT DISTRICT.  
 LABRADOR CITY

**USED CAR VALUES**  
 WE BUY AND SELL  
**USED CARS**  
 CONTACT  
**BREEN ENTERPRISES**  
 LABRADOR CITY  
 TED 944-2221 BOB 944-2273

# Happy Home Values

FOR SMART SHOPPERS



## BATH TOWELS

Soft 20x40' towels. Attractive patterns, in blue, green, yellow and rose.

**67<sup>c</sup>**

## FACE CLOTHS

12 x 12" Face clothes match towels.

**19<sup>c</sup>**

## BEDSPREADS

Beautiful Bedspreads that will add charm and elegance to your home. Available in an assortment of lovely shades in single and double bed size widths.

**\$5<sup>47</sup>**



3 PIECE

## BATH MAT SETS

Save on soft 3 piece Bath Mat sets. Colours include . . . yellow, white green, turquoise and rose.

**\$7<sup>98</sup>**

## 2 PIECE BATH MAT SETS

Thick, thirsty bath mat sets . . . 2 piece, in assorted colors.

**\$1<sup>97</sup> - \$5<sup>97</sup>**

## 52 PIECE DINNER SET

This beautiful translucent Porcelain ware is an extraordinary saving. 52 pieces in lovely floral pattern.

**\$24<sup>77</sup>**



## MAGNETIC BROOM

Made of tough Nylon bristles for longer wear.

**97<sup>c</sup>**

## WET MOP

Save on useful 8 oz. wet mop.

**94<sup>c</sup>**

**AYRE'S**

**WABUSH SHOPPING CENTRE**

## The lighter side

**THE INSCRIPTION:** The store clerk asked the woman buying a drinking trough for her dog if she would like it inscribed: "For The Dog?" "It really doesn't matter," she replied. "My husband doesn't drink water and the dog can't read."

**THE LATEST STYLE'S:** A commuter was discussing the Younger Generation with his seat passenger on the way in from the suburbs.

"It's a shame the way they dress," he said, "with their skin-tight pants and fancy hair-do's."

"You're absolutely right," his partner agreed. "And the girls are even worse."

**THE EMERGENCY:** The doctor was just locking his office for the evening when he received a call from a man saying, "My small son has just sucked all the ink out of my fountain pen and swallowed it."

Trying to calm the man, the doc answered: "Take it easy. I'll be there immediately. What are you doing in the meantime?"

Replied the man: "Using a pencil."

**AT CHURCH:** Dad criticized the sermon. Mother thought the organist made a lot of mistakes. And sister didn't like the choir's singing.

But they all shut up when little Junior remarked. "I thought it was a pretty good show for a dime!"

**CHARITY:** At a small town charity bazaar, a gaudy gal was selling kisses for a dollar; and a local clergyman kept buying them from her lush lips. When the bazaar closed, a friend asked him: "Did you know you were kissing the most notorious woman in town?"

"Good Lord, no!" exclaimed the parson. "I'm so ashamed!"

The next week he encountered the curvaceous kiss-seller on the street and said to her:

"I heard all about you and I've been praying for you ever since."

"Gee," she replied, 'you should 'a' phoned me and I'd 'a' come right over."

**ASTRAY:** A little boy strayed away from his father at an amusement park and got lost. A policeman found him, and the kid tearfully explained the situation.

"What's your father like" asked the cop.

"Beer and women," answered the kid.

**ROMANTIC:** "Why," asked the girl in the car, "did you park here when there are so many nicer spots farther down the road?"

"Because," her boy friend replied, "I believe in love at first site."

**AN EXPENSIVE CRYSTAL BALL:** The wrinkled gypsy looked up from her crystal ball to the gentleman seated across the table.

"I will answer any two questions you ask me," she said, "for fifty dollars."

"That's rather high isn't it?" asked the man.

"Yes, it is," she chanted. "Now what is your second question?"

**MARRIAGE:** After an engagement of several years, Tom and Trudy were finally married. When they returned from their honeymoon, a friend asked Trudy how she liked married life. Absent-mindedly, the bride replied: "To tell the truth, I can't see a bit of difference."

**PLEASURE:** Everybody is able to give pleasure to others in some way. Some do it by entering a room .....others simply by leaving it.

**THE AGING PLAYBOY:** Any Don Juan knows he's getting older when he finds himself Don after Juan.

**MEMORIAL UNIVERSITY  
OF NEWFOUNDLAND  
EXTENSION SERVICE  
EVENING CLASSES  
1970 - 1971**

**REGISTRATION:**

Main lobby of Labrador City Collegiate 7 p.m. - 10 p.m. Tues.  
Oct. 6 Main lobby of J.R. Smallwood Collegiate 7 p.m. - 10 p.m. Wed., Oct. 7.

Fees are as specified and must be paid during registration.

Classes will begin the week beginning Monday, October 12, 1970.

**INSCRIPTION:**

Foyer du Collegiate le 6 Octobre, 7h a 10h du soir.

Les frais d'inscription specifies d'qvirt etre payes a l'inscription.

Les classes commenceront le semaine du 12 Octobre.

**COURSES OFFERED IN LABRADOR CITY\***

CONVERSATIONAL ENGLISH I - October 12 - 8 - 10 p.m. - 20 sessions - \$25.

COURS DEBUTANT D'ANGLAIS - Commencement 12 Octobre - 8h - 10h du soir. 20 sessions - prix \$25.

CONVERSATIONAL ENGLISH II - Oct. 15 - 8 - 10 p.m. - 20 sessions - \$25.

COURS INTERMEDIAISE D'ANGLAIS - Commencement 15 Octobre - 8-10 p.m. 20 sessions - prix \$25.

CONVERSATIONAL FRENCH I - Oct. 13 - 8 - 10 p.m. - 20 sessions - \$25.

CONVERSATIONAL FRENCH II - Oct. 14 - 8 - 10 p.m. - 20 sessions - \$25.

CURRENT AFFAIRS - Oct. 13 - 7.30 - 9.30 p.m. - 20 sessions - \$25. A study of the problems which are affecting all of us who now live in a "global village." Topics ranging from the Arab-Isareli confrontation to pollution.

PUBLIC SPEAKING - Oct. 14 - 8 - 10 p.m. - 20 sessions - \$25. Preparing and delivering effective speeches, participation in discussion groups, panel discussions, etc.

BASIC ELECTRONICS - Oct. 14 - 8 - 10 p.m. - 20 sessions - \$25. The course is designed for beginners who are interested in electronics as a hobby or perhaps thinking of a future career.

PHOTOGRAPHY - Oct. 13 - 8 - 10 p.m. - 20 sessions - \$25. This course will include the taking of pictures, processing of prints and negatives, etc.

ART - Oct. 13 - 8 - 10 p.m. - 20 sessions - \$25. The content of this course will be determined by the interests of the students.

GLEE CLUB - Oct. 12 - 8 - 10 p.m. - 20 sessions - NO CHARGE

**ALL COURSES WILL BE OFFERED  
AT LABRADOR CITY COLLEGIATE**

**COURSES OFFERED IN WABUSH \***

HOSTESS COOKING - Oct. 15 7.30 p.m. - 9.30 p.m. - 20 sessions - \$25. This course will include preparation of gourmet foods, meal planning for family and special occasions, demonstration and practical work.

SEWING - Oct. 13 - 8 - 10 p.m. - 20 sessions - \$25. This course will include choosing patterns, choosing fabrics, basic and advanced sewing skills, care of sewing machine, etc.

TYPING - Oct. 15 - 8 - 10 p.m. - 20 sessions - \$25. This course is designed for beginners and will offer basic typing skills, care of typewriter, etc.

CONVERSATIONAL FRENCH - Oct. 13 - 8 - 10 p.m. - 20 sessions - \$25.

\*ALL COURSES WILL BE OFFERED AT J.R. SMALLWOOD COLLEGIATE.

NOTE: The Extension Department reserves the right to withdraw courses which do not receive sufficient applicants.

All enquiries pertaining to extension courses should be directed to A.D. Wright - Phone 5425 - Labrador City.

**Nominating conventions planned**

The dates for three more early nominating conventions have been announced by Progressive Conservative Party leader Frank Moores. Mr. Moores announced that the nominating convention for the district of Labrador North will be held on Wednesday, October 7 in the parish hall at Goose Bay beginning at 8 p.m.

There will be two meetings for the Labrador West nomination. The first will be held in Labrador City, in the McManus school on October 8

and the second will be held in Churchill Falls on October 9.

There will also be two meetings for the district of Trinity North. The first one will be held in Clarenville at the elementary school on October 12 and the second the following night in Catalina at the T.A. Lynch Memorial School.

Mr. Moores also announced that there has been a change of rules for all nominating conventions from now on.

Henceforth, there will be no nominations accepted from the floor. All names of nominees must be in writing in the hands of the secretary of the local district association or the provincial headquarters 48 hours before the nomination convention date. The new ruling will mean that candidates will have time to campaign, they will be able to have scrutineers overseeing registration and proper ballots will be able to be printed prior to the meeting.

**Guide activities are resumed**

Guiders' Club reconvened on September 7, 1970 and plans were formulated for the ensuing season. At this time it is always sad to see vacant spots created by Guiders who, for various reasons, are unable to carry on; however, it is also encouraging to welcome new leaders. If you are interested in working with girls aged 7-10 (Brownies), 10-14 (Guides), please call 944-5366.

Meetings will be resumed very shortly. Following is a list of Companies and Packs, their leaders, meeting place and time.

| Company or Pack & Leaders  | Meeting Place                                | Time                     |
|--|--|--------------------------|
| 1st Carol Guide Company<br>Captain: Mrs. R. Fenato<br>Lieutenant: Mrs. G. Myles<br>Lieutenant: Mrs. R. Troke | Labrador City Collegiate<br>All Purpose Room | 7-9 p.m.<br>Tuesday      |
| 2nd Carol Guide Company<br>Captain: Miss J. Hardie<br>Lieutenant: Miss E. Delahunty                          | C.E. McManus Gymnasium                       | 7-9 p.m.<br>Tuesday      |
| 3rd Carol Guide Company<br>Captain: Mrs. C. Granter<br>Lieutenant: Mrs. T. Lewis                             | Anglican-United Church Hall                  | 7-9 p.m.<br>Tuesday      |
| 1st Carol Brownie Pack<br>Brown Owl: Mrs. J. Kreuckle<br>Tawny Owl: Mrs. L.G. Hutchcroft                     | Salvation Army Citadel                       | 6-7:30 p.m.<br>Friday    |
| 2nd Carol Brownie Pack<br>Brown Owl: Mrs. Christie<br>Tawny Owl: Mrs. B. Waddington                          | C.E. McManus Gymnasium                       | 6-7:30 p.m.<br>Thursday  |
| 3rd Carol Brownie Pack<br>Brown Owl: Mrs. J. Preston<br>Tawny Owl: Mrs. R. Whalen<br>Snowy Owl: Mrs. Keating | Anglican-United Church Hall                  | 4:30-6 p.m.<br>Wednesday |
| 4th Carol Brownie Pack<br>Brown Owl: Mrs. F. Henry<br>Tawny Owl: Mrs. F. Stoyles<br>Snowy Owl: Mrs. E. Nes   | C.E. McManus Gymnasium                       | 4:30-6 p.m.<br>Monday    |
| 5th Carol Brownie Pack<br>Brown Owl: Mrs. W. Laing<br>Tawny Owl: Mrs. M. Underwood                           | C.E. McManus Gymnasium                       | 4:30-6 p.m.<br>Wednesday |

**CANTEEN TENDER**

The Labrador City Recreation Commission will accept tenders for the operation of the Arena canteen. Closing date is Wednesday 7 Oct. 1970, at 3.00 p.m. Interested parties may obtain tender forms from the Secretary, Labrador City Recreation Commission, Town Hall.

## From the national press

**NORTH AMERICAN ARCTIC COMMUNITIES COMPARED:** "One of the ironic aspects of our modern civilization is that many politicians, advertisers and young engineers are still more intrigued with introducing civilization and Hilton-type hotels to the moon, Mars, and Antarctica primarily at government expense than they are to introducing the same to the North American Arctic largely via private initiative."

Dr. Charles C. Bates, Science Advisor to the Commandant, U.S. Coast Guard, made this comment in an address given earlier this year to the Society of Exploration Geophysicists at its annual international meeting held in Calgary. In his talk on "Three flags over the North American Arctic, a brief geographic and economic comparison thereof", he went on to describe some of the present types of northern settlement. The North American Arctic is defined by Dr. Bates as all of Greenland, Canada north of 60 degrees North, and Alaska north of the same latitude.

**Military Bases.** Along the West Coast of Greenland, the most highly developed settlements are those associated with major U.S. air bases, particularly those at Sondrestrom Fjord half way up the coast and at Thule at Latitude 71 North. Although termed United States Air Forces Bases, with populations of about 1,000 for Sondrestrom and 2,000 for Thule, the majority of the workforce is Danish, and civilian at that. Because the Sondrestrom Fjord strip is also the major civilian terminal in Greenland for Scandinavian Airlines (SAS), 40 Danish women are posted to terminal duties without undue difficulty across the way from the U.S. Air Force installation, which is pure male according to U.S. practice in Greenland. At Thule, the on-base female population drops very sharply, there being exactly one, the wife of the Danish liaison officer.

**Alaskan Metropolis.** Today, nearly half of Alaska's population of 285,000 lives in the Anchorage area, a metropolitan area completely comparable to that found in the "South 48." At Fairbanks, an old gold camp 265

miles east of Anchorage, is presently the end of the U.S. operated Alaskan railroad, a 523 mile long rail system. Today, Fairbanks, with some 25,000 people, is the home of the University of Alaska, a land-grant university whose 2,000 students frequently specialize in Arctic related technology. Fairbanks also has a major airport from which was staged last year the largest U.S. civil airlift ever when equipment and supplies for over a dozen drilling rigs were airlifted to the North Slope's "oil patch", 300 to 400 miles away. Fairbanks is also the probable starting point of the State proposed extension of the Alaskan railroad to the North Slope. Fairbanks also lies about 50 miles east of the proposed, \$900 million, Trans-Alaskan pipe line.

**Problems of Climate:** The capital of Alaska, Juneau, with a population of only 6,000, is situated on a beautiful fjord 565 air miles southeast of Anchorage and 900 miles from Prudhoe Bay, well out of the mainstream of today's air, rail and highway systems, as well as the oil play itself. Moreover, because of frequent cloud cover and fog in the fjord, there is difficulty in getting in and out of the city's airport regularly and with safety. North of the Alaska Range, there are no communities of over 3,500 persons. Today, Nome, a city of 20,000 70 years ago, claims a population but one-sixth of that today. Although Nome has a dredged harbor, the working depth was recently only five feet. Hence, freighters still lie one mile out and cargoes must be lighted ashore. **Roads Non-Existent.** Road networks, it must be remembered, simply do not exist north of the Yukon River. From Nome, there is less than 100 miles of winter road. Further north, outside of Point Barrow, a town of about 2,000, there is less than five miles of road suitable for use by conventional cars. East of Point Barrow, some 150 miles, lies the Prudhoe Bay oil field.

**A Town Re-Built.** Two hundred miles east of Prudhoe Bay is Inuvik, the experimental model city begun in 1955 by the Canadian government when it became

necessary to relocate Aklavik because of recurrent flooding by the Mackenzie River. Inuvik, and its subsidiary town, Tuktoyuktuk, 50 miles to the north on the Arctic Ocean, is the key transportation centre for the western Canadian Arctic. Although the population totalled only 3,000 in 1969, Inuvik is an excellent air and river terminal which also serves as an educational and research centre, complete with experimental pipeline field. At Inuvik, Canadian governmental personnel live in bachelor or family quarters equipped with a central system which provides steam heat, drinking water and sewage disposal via one insulated duct called an "utilidor". By placing the airport seven miles from town, winter ice fogs created by burning city fuel do not shut down the airport as is typical of the Fairbanks airport.

**Allowance For Freight.** Moreover, although the governmental family quarters cost \$40,000 to build, highly adaptable Eskimo carpenters have now learned so well that they can reproduce such quarters in the private sector of town for about \$25,000 per home. Prices of this type are possible only because of a special Canadian government policy termed, "freight equalization", wherein the cost differential between freight delivered to non-Arctic towns in the prairie provinces and to the towns in the Yukon and Northwest Territories are borne by the federal government. This is in sharp contrast to Alaskan practice, where freight costs between factory and consumer are unsubsidized and often reach three times or more than what they are within the United States. Local political decision-making for the Canadian Arctic has recently been intentionally shifted from Ottawa to the Northwest Territories by moving most of the Department of Indian Affairs and Northern Development to Yellowknife, a city of 4,300 on the north shore of Great Slave Lake. A goal has been set for having 75% of the positions in the Department manned by native-born inhabitants by 1977.

# P·C· NOMINATING CONVENTION

There will be a Progressive Conservative Party nominating convention for the District of Labrador West on 8-9 Oct. 1970. The first will be held at the McManus School Auditorium, Labrador City, on Thursday 8 Oct. at 8.00 p.m. The second will be held at Churchill Falls on 9 Oct. also beginning at 8.00 p.m. Nominations must be in the hands of the Secretary, Labrador West P.C. Association, 48 hours prior to the first meeting. Nominations will not be accepted after this date. For further information on nomination papers, please call the secretary at 282-6898. All eligible voters 19 years and over are welcomed to participate. Provincial P.C. Party Leader Frank Moores and members of the Provincial Executive will be attending the meetings.

# Theory of evolution by Lawrence Jacobs

## PART TWO

Although all evolutionists generally agree on the theory for the origin of life and its evolutionary development up to modern man, there are, however, many varied beliefs and theories as to how and why this change came about. Probably three of the most familiar evolutionists are Charles Darwin, Dr. Lamarck and De Vries. Let us now look at each and discover their theories concerning this evolution from the one-celled protozoa to the multi-celled homo sapien.

In 1858, Charles Darwin and Alfred Russel Wallace, jointly presented their beliefs concerning evolution. They had each arrived at the same conclusion independently; but Darwin is often given sole credit for what he has termed 'the struggle for existence' and the 'survival of the fittest'. Darwin had written his book, 'The Origin of Species' after many years of biological research and experimentation with birds, animals, fish and plants, etc. in the Galapagos Islands. He said that in the daily struggle of living things contending with each other for food and the necessities of life, the weak usually die off and the strong live. This he assumed resulted in a better and stronger breed of plants, birds and animals.

To a limited extent, this is true, however, the improvement always remained within a particular family or group. No new group of animals, birds, plants, etc. could have been formed in this way. For example, if an equal number of black and white rabbits were set loose in some northern region, the black rabbits would probably soon be nonexistent

because of it being easily visible to its enemies, whereas the white rabbits would undoubtedly increase. The white rabbits would be the fittest in this regard, since they blend with their environment, not easily seen by their enemies. Here we see, 'the survival of the fittest' however, it doesn't necessarily mean that because of the white rabbits surviving longer than the black rabbits, that they will change. They are still white rabbits and in no way will they become white cats or dogs or any other creature other than rabbits.

Lamarck believed in the inheritance of acquired characteristics. For example, he believed that giraffes stretched their necks to reach food in the higher parts of trees. In this way, he asserts that the evolution of the long-necked giraffes came about after many generations of stretching.

This, as we know, is rather far-fetched. Obviously, the offspring does not inherit such characteristics of their ancestors. For example, if we cut off the leg of a sheep, this will not cause its offspring to be born with only three legs. If a man should lose a finger or some other part of his body, this will not have any genetic affect on his children. All the hereditary characteristics are built into the genes inside the chromosomes of the cell. These genes contain at birth the entire blueprint of the characteristics of the offspring which it shall produce. Changes in the physical structure of the body has no affect on its offspring. The acquired characteristics then, do not appear to be inherited.

De Vries theorized that evolution was possible because of mutations. A mutation is a change in the

structure or composition of the gene. Webster defines a mutation as; 'a change resulting in the production of new species'. Species is defined as 'having members that differ only in minor details'.

Before going further, it is necessary at this stage to briefly clarify what is meant by 'animal classification'. There are six classifications into which all animal life falls; namely, the phylum, class, order, family, genus and species.

The phylum is the first unit into which the animal life is divided. It consists of animals sharing basic qualities. For example, the phylum protozoa consists entirely of one-celled animals.

The next breakdown is that of the classes wherein basic structural features are distinguished, such as the class mastigophora of the phylum protozoa, that possess a whip-like structure for moving. Animals having greater recognizable distinctions are further divided into 'order'.

The categorizing continues into the 'family', the 'genus' and the 'species' which is the basic unit of taxonomy. The 'species' is made up of a group of animals whose members are capable of inbreeding.

It is impossible for a mutation to create an offspring that does differ from its parent but under no circumstances will it be of a different order, class or phylum. For example, a mutation in the genes of a dog may produce a dog entirely different from the parent or another species, nonetheless it is still a dog. It is only possible to form a different species within a family. It will never create a new order of animals. Mutation does produce change but always within a group.

**A good reason for borrowing is a good reason for lending at HFC**

Got a money need? See HFC. We'll understand and help... because in our 92 years we've seen... and solved... just about any kind of money problem you can imagine. When you need to borrow... to pay bills, buy a better car, take a vacation, or accomplish some other important purpose... we're glad to help. And we provide a wide choice of convenient repayment terms. Bring your money need to us today. Let us show you why, every year, more than 2 1/2 million people borrow with confidence from Household Finance.

Apply for your loan by phone. We'll supply your loan by mail.

| AMOUNT OF LOAN | MONTHLY PAYMENT PLANS |           |           |           |           |           |
|----------------|-----------------------|-----------|-----------|-----------|-----------|-----------|
|                | 60 months             | 48 months | 36 months | 30 months | 24 months | 12 months |
| \$ 100         | \$.....               | \$.....   | \$.....   | \$.....   | \$6.12    | \$9.46    |
| 300            | .....                 | .....     | .....     | .....     | 18.35     | 28.37     |
| 550            | .....                 | .....     | .....     | 23.73     | 32.86     | 51.24     |
| 1000           | .....                 | .....     | .....     | 41.45     | 58.11     | 91.56     |
| 1500           | .....                 | .....     | 60.47     | .....     | .....     | .....     |
| 2500           | .....                 | 77.16     | 94.48     | .....     | .....     | .....     |
| 3000           | .....                 | 92.59     | 113.38    | .....     | .....     | .....     |
| 4000           | 107.53                | 123.46    | 151.17    | .....     | .....     | .....     |
| 5000           | 134.41                | 154.32    | 188.96    | .....     | .....     | .....     |

Above payments include principal and interest and are based on prompt repayment but do not include the cost of life insurance.

**HOUSEHOLD FINANCE**   
Corporation of Canada

**LABRADOR CITY**  
Carol Lake Shopping Centre... Telephone 2647  
Ask about our evening hours

**MORE MONEY FOR HOUSING:** Royal Trust Co. of Montreal is making available an additional \$15 million in mortgage funds for low-cost National Housing Act single family homes. The company has already approved \$100 million for more than 8,000 new and existing single and multiple family units under both conventional and NHA financing terms. Royal Trust hopes that the latest funds will finance at least 1,000 new housing starts. The recent announcement

followed an appeal from the government to trust companies and other mortgage lenders to make more funds available for housing.

**AGE DISCRIMINATION:** Job vacancy advertisements that indicate discrimination against persons between the ages of 40 and 65 can bring action by the United States Labor Department. A drive to screen such ads was announced under a law affecting firms with 25 or more employees.

Phone 282-6877 or 282-6632

**WESTLAB**

FOR ALL YOUR FAVOURITE BEERS

India - Black Horse - Labatt 50  
Molson's Export - Dominion  
Blue Star - O'Keefe  
Molson's Canadian



Home Delivery Service:  
Monday to Saturday 1 p.m. to 9 p.m.

Warehouse Pick-up Service:  
Monday to Saturday 9 a.m. to 9 p.m.

Telephone orders taken Monday to Saturday 9 a.m. to 9 p.m.

We have recently installed Cooler Service permitting us to provide our customers with chilled beer at all times.

282-6877 or 282-6532

## College board is named

The Minister of Education and Youth, Dr. F.W. Rowe, has announced the appointment of the first Board of Governors for the College of Trades and Technology. They are as follows: G.M. Cator, Grand Falls; W.N. Chisholm, Manuels; K.F. Duggan, (Ex Officio) St. John's; Dr. R. Goodwin, Harbour Grace; Evan Johnson, St. John's; Mrs. Warren Newhook, St. John's; Paul E. Penney, Labrador City; C.A. Pippy, Jr. St. John's; John Francis Ryan, St. John's; Claude Sheppard, St. John's.

The Government have appointed Mr. Claude Sheppard to be the first Chairman of the Board and Mrs. Warren Newhook to be Vice-Chairman.

## HUNTER'S SPECIAL

Get to your camp rested, why walk that long trail. Use your Snowmobile for trail travel this fall.

Hook on a trailer and haul your Moose out by Skidoo.

GET A SET OF "TURF - SKIES" For Summer travel with your snowmobile. Regular Price \$139.95 **FITS ALL MAKES FOR A LIMITED TIME ONLY 89.95**

AT ALL SNOWMOBILE DEALERS OR CALL **J. W. RANDALL LTD.** Corner Brook Phone 634-3533

# Speaking of Sports

AURORA, LABRADOR, SEPTEMBER 30, 1970 - 13

**TRAP & SKEET:** Over the weekend of September 12-13, the Labrador City Trap and Skeet Club were hosts to the Schefferville Club for the annual inter-town meet. Representing Schefferville were W. Lavelle, D. Loader, N. Strang, N. Leblanc and G. Davis. In the five-man team event the Labrador City team of C. Corbeil, B. Miller, J. Walsh, G. Corbeil and Break, were victorious, hitting 215 of 250 against their opponents 199 of 250.

In the two-man team event, winners were Bud Miller and Bert Freake with 48 of 50. Runners up were A. Coish and N. Strang with 47 of 50. Winner of the singles was Jim Walsh with 45 of 50. High gun over-all was C. Corbeil with 84 of 100.

The Labrador City team will be visiting Schefferville over the weekend of October 10-11. Good luck fellas.

**BOXING:** An enthusiastic 1,200 fans at the Labrador City Arena, September 20, were on hand to witness one of the most exciting boxing shows ever held in this area. There wasn't a dull moment from the opening preliminary to the final bell.

The "Fight of the Night" was the main event in which Terry Hayward, the Eastern Canadian Jr. Middleweight champ, fought his heart out for 10 rounds only to lose out on a split decision to

a more experienced boxer, Leslie Phillips. The American was content to let the local favorite be the aggressor while he countered with solid left hooks and uppercuts. Hayward had his opponent hurt on several occasions, but didn't follow up. The fight was a give-and-take all the way. The 10th round was most exciting, fans were on their feet roaring, as both fighters stood toe-to-toe slugging it out to the final bell.

In the semi-final "Smiling" Stan Hayward didn't waste any time in disposing of veteran Jean-Marie Avena of Montreal. Avena got off the canvas twice, only to be put down and out at 1:40 of the second round.

This is three in a row for Stan.

Headlining the amateur bouts; an accidental butt resulted in a "no-contest" between Dave Simon and Al Summerville. There was a lot of interest in this fight, which turned out to be a disappointment.

Ray Canning made it two in a row by decisioning Bob Flight of Labrador City. P.J. Aylward won a 3rd round decision over Ches Holmes. Holmes hit the deck in round 2.

Another freak accident occurred when Harry Follett got caught with a right hand in back of the head by Finite March of Wabush. March was declared the winner in one.

Markie March won a decision over Terry McDonald. Both boys showed lots of potential.

In the curtain raiser Johnny McGregor seemed more concerned with keeping up his trunks than fighting and lost a

three round decision to B. Barron. Officials for the card were B. Brown, announcer; K. Ringer, timekeeper; R. Besette, referee; R. Hardie, A. McLennan, J. Rainey, judges. (Contributed)

On Friday past the Dinner-Dance and presentation of prizes of the Wabush Industrial Softball League was held.

League officers for the 1970 season were: President Gordon Martin, Vice-President Jim McCarthy, Secretary Elizabeth Delahunty, Umpire-in-Chief B.R. Rough.

During the season approximately 136 players took part in the 8-team league which was won by the "Roadrunners".

Congratulations to the winning team and the individual prize winners.



He missed. According to Terry Hayward, this is the way to lose a fight.



The Executive (1970) of the Wabush Industrial Softball League.

## Mind teaser

If a dealer bought a quantity of merchandise for 19/20 of its value and sold it for 13/12 of its value, thereby gaining \$248 on the transaction, how much did he pay for the merchandise?

**ANSWER**

\$1,767. Subtract 19/20 from 13/12; 8/60 then equals the \$248 profit; divide 248 by 8/60, and multiply result by 19/20.

## AYRE'S LIMITED, WABUSH

PROUDLY PRESENTS

# NEW DIMENSIONS IN Fall Fashions



SPONSORED BY  
ST. PAUL'S ANGLICAN CHURCH  
WOMEN'S ASSOCIATION  
LABRADOR CITY  
AT THE ASHUANIPI SOCIAL CLUB  
WEDNESDAY, OCTOBER 14th.  
8 p.m.

REFRESHMENTS WILL BE SERVED  
DOOR PRIZE  
ADMISSION \$2.00

**ALL ARE WELCOME**



**CRUISE SHIP: "RESORT ON THE GO":** Short Caribbean Cruises.

The Caribbean remains the most popular destination for winter cruising. Come November almost all cruise lines plot their courses and make towards the cluster of little islands that offer immense variety to passengers within a short space of time. Ports are improving facilities fast, off-beat spots are being added to itineraries and lines are revising schedules to give passengers the maximum time for enjoying themselves ashore while living comfortably aboard without the nuisance of constant packing and checking in and out of hotels.

On the way to warmer waters many cruises out of New York or Boston visit Bermuda and Nassau. Nassau, capital of the Bahamas, is an exciting port of call with its famous Paradise Island gambling casino, and elegant entertainment and shopping areas. In fact there are several cruise lines which offer short cruises to Nassau from Miami. Norwegian Caribbean's Sunward, Costa's Flavia, and Eastern Steamship's New Bahama Star all offer three-day

weekend cruises to Nassau, which give you two full days in port, using the ship as your hotel. This is plenty of time to live it up at local hot spots like Charlie Charlie's.

Freeport, New Providence Island, is the Bahamas' brand new but very swinging resort. Where else can you take a red double decker London bus to do some shopping in a Hong Kong Emporium, eat Spanish paella, gamble in a Moorish casino, and finish off a pint of best bitter in an English pub, all in one afternoon? The M.V. Freeport offers 23-hour cruises to Freeport from Miami for passengers who like to stay up late. You don't get off the ship but stay on board to whoop it up at a round-the-clock party with entertainment and gambling. And for those determined that their cruise will be romantic, on January 2, 1971, the Queen Anna Maria of Greek Line will sail for Nassau and Freeport on a singles-only cruise. (Price from \$225)

An old favourite port of call is St. Thomas in the U.S. Virgin Islands.

Charlotte Amalie, the seat of government, has been called the

"cruise capital of the Caribbean." Visitors are attracted by the hundred-odd stores tucked into centuries-old warehouses which offer goods from watches to crystal and perfume at really duty-free prices. The spanking new Song of Norway of Royal Caribbean Lines will include St. Thomas on her seven-day itinerary operating weekly out of Miami from November 7. (Prices from \$220) St. Thomas is also included on almost all of the German Atlantic Line's itineraries on the Hanseatic and the new luxurious Hamburg. (Prices from \$670 for 14 days.)

For a taste of Holland in the Caribbean pick a cruise which calls at Curacao or Aruba. Curacao, with its pastel coloured 17th century gabled houses and swinging pontoon bridge "Queen Emma" welcomes many cruise-liners every year. Shopping is excellent in the duty-free stores of the capital, Willemstad. Aruba has lovely beaches, and wonderful water for diving, and strange windblown dividivi trees which dot the horizon like hostly inert figures. Prudential-Grace Lines' Santa Rosa and Santa Paula sail to both Curacao and Aruba on their 13-day Treasure cruises out of New York. (Prices from \$445)

The Caribbean Islanders all love music and dancing and everywhere in the islands you'll be serenaded by haunting calypso beats. In Barbados you can sit by the pool of your hotel sipping a rum punch and listening to a local steel band. In Jamaica you can boogaloo under the stars beside the gently lapping water. In St. Vincent you can listen to the fascinating sounds of a "Bamboo Band" comprised of instruments of all shapes and sizes fashioned out of bamboo. In Grenada you can marengue romantically in the spice-filled air overlooking St. George's, the most beautiful harbor in the islands.

Wafts of gauloises, camembert and garlic greet you as you disembark at the oh-so French port of Port-de-France in Martinique. If you arrive on a Sunday you'll find it like a festival day because the lovely Martiniqueais parade the streets in their distinctive and colorful costumes with knotted turbans and tucked tresses. Tiny Chez Gerard leads the marvellous restaurants you'll discover both here and on butterfly-shaped Guadeloupe, a lovely wild jungly French island. Paquet Lines' Renaissance will be calling at Martinique on her 15-day Christmas cruise leaving

**Auxiliary re-opens**

The opening fall meeting of the Jackman Memorial Hospital Ladies' Auxiliary was held Monday, September 28. Introduction of the new hospital administrator, Major Eleanor Johnson, and a get-acquainted hour comprised this first meeting.

The Ladies' Auxiliary is a volunteer group of women from both Labrador City and Wabush who meet every fourth Monday of the month. Their main purpose is to raise money to improve hospital facilities or functions. They also operate a truck cart and provide a library service to the patients.

**Home-owners' ad column**

**WANTED:** To rent a basement apartment by a married couple with no children. Would prefer apt. already furnished with stove and bathroom facilities. Please call 944-5876, 944-5450 or 944-8461.

**WANTED:** Experienced dining room waitresses. Apply in person to the Sir Wilfred Grenfell Hotel.

**LOST:** A large Black Cat. Blind in one eye. Finder please call 944-3347.

**AVAILABLE:** Immediately, accommodations for a married couple in a private home. Middle-sized bedroom, furnished. Normal use of entire home including kitchen and all appliances. Phone 944-5810.

**AVAILABLE:** Can accommodate one female boarder or married couple without children. Interested parties phone 944-5878 after 5:00 p.m. weekdays.

**FOR SALE:** 1965 Volkswagen, in good condition. Interested parties phone 282-3085.

**WANTED:** Part time help needed for the Labrador City Library. Interested persons please call 944-5909 during office hours. 9:00 a.m. - 5:00 p.m.

Port Everglades on December 19. (Prices from \$570) Air France is operating a fly/cruise out of Guadeloupe with Star Cruises. You fly down to the French island to join either the Dalmatia or the Istra for a seven-day cruise to five ports. (Prices from \$370, all inclusive.)

Eastern Airlines will fly you down to Miami to join a 7-day cruise on the Starward of Norwegian Caribbean Lines to three ports in Jamaica. (Prices from \$195 plus air fare.) St. Lucia has been added to this year's schedule on Chandris-America Line for the first time. The Amerikanis will call at St. Lucia on her 14-day cruise from New York on February 15. (Prices from \$465, five ports.)

One delightful way to explore the smaller Caribbean islands is to charter a yacht. British West

Indies Airways are offering an air/yacht holiday using St. Vincent as the chartering gateway. The cost of a 7-day, 7-night holiday cruising through the beautiful Grenadines to Grenada is from \$521, including air fare, for each person in a party of four. A new port of cruise ships is Haiti's "top city" Cap Haitien. Once France's wealthiest colonial capital, today a quiet town of pretty colonial buildings.

Cap Haitien retains the old Latin custom of promenading in the evenings to the accompaniment of band music. Passengers on Commodore Cruises 7-day trips to Freeport, St. Thomas, St. Juan and Cap Haitien, on the Boheme, get a chance to visit the eerie Citadelle of King Christophe high on the mountain, which commands a magnificent panorama. So all on board for a Caribbean Cruise.

**LEGAL CARD**  
**DAVID B. SPARKE'S**  
 Lawyer - Advocate  
 Shopping Centre Mall  
 OFFICE HOURS: - 9 to 12 and 1:00 to 5:00  
 Telephone 944 - 5948 (Residence).  
 944 - 5555 (Office).

**CAROL PAINTING LTD.**  
**PAINTING CONTRACTOR**  
**DOMESTIC AND**  
**INDUSTRIAL PAINTING**  
 REASONABLE  
 PRICES  
 5 MAPLE  
 CRESCENT  
 APARTMENTS  
 PHONE 944-5551

**PHONE  
TODAY  
FOR FREE  
ESTIMATE**



**THE B & J LUMBER CO. LTD.**

**BUILDING MATERIALS**  
**WABUSH INDUSTRIAL PARK**  
 Phone 282-6243-3182  
**FREE DELIVERY**  
 P.O. 1108



**MARITIME LIFE**  
**ASSURANCE COMPANY**  
 HEAD OFFICE HALIFAX  
 The Company with "Venture Growth"  
 the modern concept of life protection.  
 Resident agents in Labrador City,  
**Ron Brown 944-2294**  
**Phil Lozman 944-2666**  
 Branch Office Millbrook Shopping Centre,  
 Corner Brook, Nfld.  
**W. Roberts, Branch Manager.**

# Scanning the market

by CHARLES DEVINE

The market seems to have rebounded after dipping to its testing point in the 740-745 area; this in spite of almost universal bad news. The Mid-East, Vietnam, hi-jackings, softening of the British pound, the G.M. strike, etc. In our opinion now is the time to buy stocks.

The aftermath of the speculative binge of the late 1960's, which carried stock prices to dizzy heights, has resulted in a severe downward revision of equity values. Disillusionment and financial problems have caused stocks appraisals to decline to levels not seen in the past ten years. It has become increasingly evident that the instruments being used to combat inflation are succeeding and, accordingly, business activity is slackening. Tight money and high interest rates have slowed capital spending, reduced profitability, increased unemployment and generally contributed to the slowdown.

Traditionally, in periods of excessive inflation, interest rates are at high levels. But conversely, when inflation slows, interest rates ease, thus permitting stock and bond values to recover. While deflationary forces will undoubtedly slow the rate of growth of the economy, this has been adequately discounted by the major market decline earlier this year. Price-earnings

multiples have been reduced to the levels of the 1950's. Yields too, are available which, in retrospect, may be the most attractive for some years.

There is evidence that the market while making a current comeback, is still oversold. This, coupled with the greatly reduced equity valuations, is providing investors with a variety of quality stocks at bargain prices not likely to be seen again in the foreseeable future. With signs of improving business conditions becoming evident, investment-calibre equities should show marked improvement. Now, however, could be the optimum time to invest in common stocks, since the market historically forecasts business conditions six months to a year in advance.

## INVESTMENT TERMS AND DEFINITIONS:

### Q. What is an investment portfolio?

A. A portfolio is simply a group of securities owned by one individual or one institution. An investment portfolio is a planned selection of those securities which will achieve specific purposes for the owner. Each security in the portfolio has a contribution to make towards satisfying the investor's requirements as to safety of principal, marketability, income and growth of capital.

### Q. Why should an investor own several securities instead of putting all his money in one first-class

A. Because no one can possibly predict with certainty the exact future performance of a security over a period of years. It is really a case of "not putting all your eggs in one basket." Also, no one security can possibly offer the ultimate in safety, income and growth possibilities. To protect your holdings and maintain a truly balanced investment program, it is advisable to diversify your holdings over a number of different types of investment quality securities representing different industries, different companies, different geographic regions and so on.

### Q. What guidelines should one observe when speculating?

A. First, don't speculate until your investment program is well under way. Then speculate only with that portion of your capital which you can lose without suffering financial embarrassment. Judge each issue on its own merits; check company properties, promoters and officers. If the issue is a new one, get a copy of the prospectus to determine whether a sufficient portion of the sale price will go toward development of the property. Finally, don't believe the "hot tips" and rumours you hear and don't let a salesman high-pressure you into purchasing a penny stock. Deal only with a reputable investment house.

### Q. What is equity capital?

A. Equity capital is the collective term for the various classes of share capital or stock. These include preferred shares, common shares and Class A and Class B shares. The term also embraces earned and capital surplus items found on a typical balance sheet.

## Social, personal

Congratulations to Mr. and Mrs. Pat Beresford on the birth of their twin girls on September 17. Also Mr. and Mrs. Bill Whelan on the birth of their son.

Congratulations to Mr. and Mrs. Ed Bonnell on their recent wedding anniversary. Also best wishes to Mr. Bonnell who celebrated his birthday on September 17.

The recent engagement is announced of Kevin Field and Miss Yvonne Fennimore. Miss Fennimore from St. Anthony, recently visited Wabush, staying at the home of Mr. and Mrs. Donald Field.

Mr. and Mrs. Wm. Dean, daughter and son-in-law of Mr. and Mrs. Andy Neil, of Wabush, left the area earlier this month to live on the island of Newfoundland. Friends of Mr. and Mrs. Dean wish them all the best in their new home. May we see them here visiting in Wabush some day.

Andy Neil, Fintan Marche and Stan Marche of Wabush, left last week to try their luck at moose hunting in the Stephenville area. Our thoughts and good wishes go out to them. Good luck men, we'll be waiting for that steak.

Congratulations to Grandmother and Grandfather Briston who will celebrate their

silver wedding anniversary on October 11. Greetings go out to them from the grandchildren Chris, Chantal and Kimberly.

### IN MEMORIUM

In Loving Memory of a dear Father and Grandfather  
**JOHN KING**  
who died Sept. 28, 1968

As the golden gates stood open,  
Two years ago today,  
With goodbyes left unspoken,  
You quickly passed away.  
Only a cluster of memories,  
Sprayed with a million tears;  
Wishing God had spared you,  
Just a few more years.  
Looking back with memories,  
Upon the path you trod,  
We bless the hours we had with you,  
And leave the rest with God.

Ever remembered by daughter Louise, son-in-law Gordon and granddaughter Brenda Keats of Wabush.

## No vehicles

W.R. Callahan, Minister of Mines, Agriculture and Resources, has issued a reminder to hunters regarding the use of vehicles in hunting.

The Minister said that it is illegal to use any vehicle, including the so-called "Go Anywhere" or all-terrain vehicles, to seek out, search for, and pursue any wildlife species.

He also reminded hunters that the use of all-terrain vehicles in the two wilderness areas of the Island is prohibited.

It is, of course, perfectly legal to use the various types of motor vehicles for transportation purposes; that is, a hunter may use any vehicle to reach a hunting site but may not use it to search for game.



## SAWHORSE

One effective way to eliminate the familiar annoyance of having your boards slide and slip around on your sawhorse while you are sawing them is to fold a length of automobile inner tube over the ridge of your horse and tack it to the sides with roofing nails. Rubber on the horse supporting the free end of the work is especially helpful - (Gene Von).

## Three concerts scheduled

The Labrador West Community Concerts Association will launch its eighth season beginning Monday, October 5. The Association will offer three concerts this year.

Featured will be singers Louise Lecavalier, soprano, and George Coulombe, tenor, presenting a concert of light opera. From Montreal both have toured extensively and have appeared on radio and television in Quebec.

Also on the program will be the London Gabrielli Brass Ensemble. Founded to bridge the gap between pop and classical music, they have recorded for Polydor and now record for Deutsche Gramophon. They have toured extensively in Europe and North America and appear regularly on B.B.C. and I.T.V. in Britain.

Highlighting the season will be the duo-harpists Longstretch and Escosa. Featuring a program of everyone from Christmas Carols to compositions by Mr. Escosa, their concerts were hailed in New York as "one of the outstanding experiences of the year."

The price of these three concerts is \$10 for adults and \$5 for students. There are no tickets sold for individual concerts and admission to each concert is by membership card only.

From October 5th to October 10th association members will be selling membership in Wabush and Labrador City at the shopping plazas and at your door. You can also call 282-3255 in Wabush after 4.30 and 944-2947 in Labrador City at any time of day if you are interested in joining.

For those who remember the last concert of last season by the DeCormier Singers and the standing ovation of the audience of 500; remember October 5th to October 10th is membership week for Community Concerts 1970-71. It will be a wonderful experience for an inexpensive price.

# LES GANTS NOIRS



ASHUANUPI SOCIAL CLUB

COMING 19th. OCT.

1 NOV. '70

## "GANTS NOIR"

ADMISSION \$1.00 PER PERSON  
WEEK ENDS \$1.50 PER PERSON

# 159<sup>TH</sup> BOWRINGS BIRTHDAY SALE

STARTING THURSDAY, OCTOBER 1st

MEN'S BRAND NAME

## SPORT SHIRTS

The season's most popular patterns and colours in a smart selection of brand name sport shirts. Plains, neats, and fancies in assorted collar styles. Sizes small, medium, large and XL.

REG. \$7. - \$8. - \$9.

SALE **\$4<sup>99</sup>**

## YOUNG MEN'S FAMOUS BRAND FLAIR PANTS

Save now on Young Men's Flair Pants, 100% wool, fortrel & wool, or polyester and viscose fabrics. Assorted stripes. Low rise style with full top pockets. Sizes 28 to 36.

SALE **\$12<sup>99</sup>**

## MEN'S PERMA PRESS PYJAMAS

100% cotton or a blend of Fortrel & Cotton Perma Press Pyjamas by famous brand name manufacturer. Boxer waist style in assorted patterns and shades. All sizes from A to E.

REG. \$7.50 to \$8.50

SALE **\$5<sup>99</sup>**

## TIE & PUFF SETS

Excellent selection in neats, undernots and stripes. Some wash and wear fabrics. Assorted colours.

REG. \$3. - \$4. - \$5.

SALE **\$1<sup>99</sup>**

## MEN'S FAMOUS BRAND HOSE

Handsome socks by famous brand name manufacturer in 100% wool, also Kroy Wool and nylon blend ... stretchies ... one size fits all. Assorted plain shades and patterns.

REG. \$1.50

SALE **99<sup>c</sup>**

## PYJAMAS

Cosy warm flannelette for cold winter nights. Excellent value at this low price. Assorted prints in sizes to fit 8 to 16 years.

SALE **\$1<sup>99</sup>**

## BOY'S SOCKS

Assortment of stretch cotton and nylon hose in assorted patterns and shades. One size fits all.

SALE **49<sup>c</sup>**

MEN'S MELTON

## SUBURBANS

This is an exceptional buy in a wool melton cloth suburban coat ... rayon quilt lined with button fronts, centre vents and flap pockets. Colours Camel, Loden, Grey, Navy in sizes 36 to 46.

SALE **\$24<sup>99</sup>**

## MEN'S AIR FORCE PARKAS

Styled from 100% nylon neo-prone coated for extra protection. Full pile lining ... also pile lined attached fur trimmed hood. Storm cuffs, drawstring waist with jumbo zipper. Navy and Bottle only in sizes small, medium large and XL.

SALE **\$19<sup>99</sup>**

## BOY'S PERMA PRESS FLANNEL PANTS

Excellent quality Perma Press Flannels ... ideal for school wear. Popular belt loop style. Guaranteed - no ironing required. Grey only in sizes 8 to 16 years.

SPECIAL PURCHASE

SALE **\$2<sup>99</sup>**

## BOY'S CORDUROY PANTS

Hardwearing cotton corduroy styled with popular belt loops. Regular ¼ top pockets. Colours, Brown, Green, Olive and Charcoal. Available in sizes to fit 8 to 16 years. A terrific buy at this low price.

SALE **\$2<sup>99</sup>**

## BOY'S AIR FORCE PARKAS

A great buy in 100% Nylon Airforce style Parka. Full Pile lining with attached Pile lined, fur-trimmed hood. Storm cuffs with drawstring waist and jumbo zipper closure. Neo-orene coated nylon for extra protection. Colours Navy, Emerald, and Green in sizes to fit 8 to 18 years.

SALE **\$17<sup>77</sup>**

CHARGE IT! on your

BOWRINGS A.P.A. ALL - Purpose Account CREDIT CARD

**BOWRINGS**  
LABRADOR CITY

