

**ARTS & CULTURE**  
**ACTO**  
**REFLECTIONS**

**MERIT** INSURANCE COMPANY  
 A Canadian  
 Coast to Coast  
**DEPENDABLE PROTECTION**  
 • Complete Coverage  
 • Low Rates  
 • Fast Fair, Friendly Claim Service  
 • Our Policy is your Protection  
 Labrador Representative  
**GORDON MANSTAN**  
 768 Stirling Crescent  
 944-3301

**FIRE**

# The Aurora

The weekly newspaper of Labrador West

Vol. 2 No. 27

AURORA, LABRADOR, OCTOBER 7, 1970

PRICE 10 CENTS

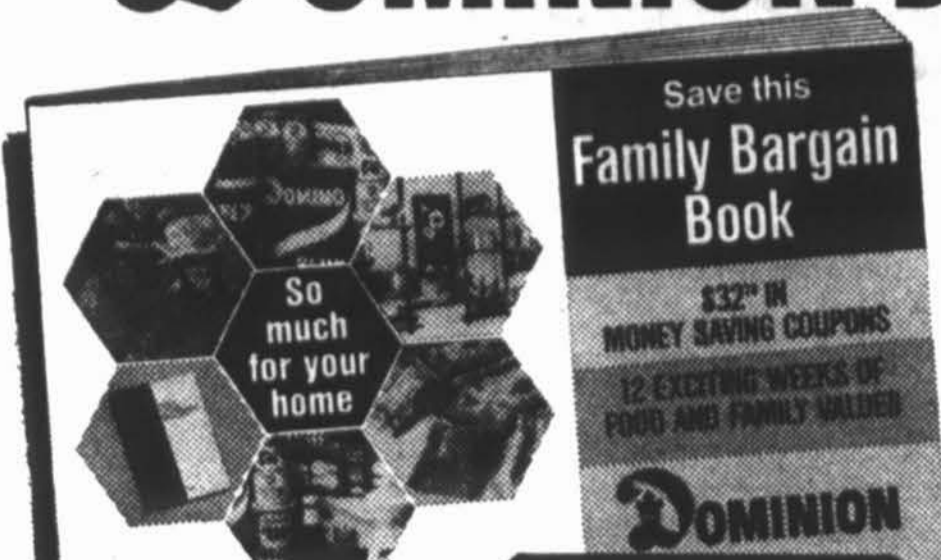


Al Bradshaw, President, Ashuanipi Social Club, presenting C.M. "Chuck" LaRose, with a painting on behalf of the Club and Directors who served on the Board during "Chuck's" 5-year tenure as President. The presentation was made during a recent banquet at the Sir Wilfred Grenfell Hotel. From left to right, Mrs. D. LaRose, Mr. LaRose, Mr. Bradshaw and Mrs. B. Bradshaw.



Conclusion of a most successful year. 1970 Shield and Trophy Winners of the Tamarack Golf Club. Photo was taken during the Annual Dinner-Dance, presentation of prizes held recently at the O'Brien Hall.

# DOMINION Brings You This Big Money-Saving Booklet!



**\$32.70**  
IN MONEY-SAVING COUPONS

The Dominion Bargain Book was inserted with your issues of Canadian, Star Weekly, Weekend and Perspectives, or delivered to your home!

Save this **Family Bargain Book**  
\$32.70 IN MONEY SAVING COUPONS  
12 EXCITING WEEKS OF FOOD AND FAMILY VALUES  
DOMINION

By now you have had a chance to look over the exciting values in your Dominion Family Bargain Book. Big Values... on quality adjustable shelving... on The Family Handyman DO-IT YOURSELF ENCYCLOPEDIA... on soft, velvety Jacquard towels... on Dominion's own brands... on dolls and toys guaranteed to delight the little ones... Savings for the whole family. Check the valuable coupons that will save your family \$32.70 over the next 12 weeks. Keep this booklet handy. Each week clip the coupons for that week, take them to your neighbourhood Dominion... and SAVE!



## CUSTOM DECORATOR SHELVING!

Add new interest to every room in your home. Don't be afraid to experiment. With Dominion's custom decorator shelving you can arrange and re-arrange shelves with ease for a quick, and interesting change of decorating scheme in any room in your home. The look and feel of solid walnut. So authentic in design it's hard to tell from real wood. Each shelf is finished on all sides with simulated walnut vinyl on a solid core. Easy to clean. Stain, warp, and wear resistant.

See details in Dominion's Booklet!



## The family handyman DO-IT YOURSELF ENCYCLOPEDIA

Build your set a volume at a time - 16 fact-packed books - over 3,000 pages - more than 6,000 illustrations, diagrams and charts - easy step-by-step instruction - thousands of modern, money-saving home improvement, repair, and decorating ideas.

Volume 1 only..... **59¢**

Volumes 2 through to 16 only... **\$1.79**

Start your set today!  
Volume 1 on sale week of Sept. 14th-19th  
See details in Dominion's Booklet!



## DRESDEN SHEARED JACQUARD TOWELS

Colourful, tone-on-tone, fringed cotton towels. Canadian-made. Exceptional quality. Terrific price. Up to 30% saving off regular retail price. Get in on the special value while quantities last. SAVE UP TO 30%.

Bath Towel 22" x 44"..... only **\$1.99**  
Hand Towel 15" x 25"..... only **\$1.29**  
Face Cloth 12" x 12"..... 2 for **\$90**

See details in Dominion's Booklet!

**FEATURE VALUE!**

Viva - 5c off (2 Rolls)  
**TOWELS 59¢**  
Essuie-Tout-Viva-5c de rabais (2 Roule)

Vachon-Strawberry-Raspberry  
Pot 24 oz. Jar  
**JAM 64¢**  
Confiture Vachon-Fraises-Framboises

Richmello-Apple or Raisin  
Tarte 24 oz. Pie  
**PIES 39¢**

Tartes Richmello-Pommes-Raisins  
Domino-Fancy Tomato  
Bte. 48 oz. tin  
**JUICE 36¢**  
Jus de Tomato-Domino de fantaisie

Domino Choice assorted  
4 Btes 14 oz. tins  
**PEAS 85¢**  
Pois de choix assortis Domino

Soft Drinks  
**COCA COLA**  
Liqueurs Douces  
(Plus Tax) **2.75**  
(Plus Tax)  
Caisse-24 Btes 10 oz.  
Case-24-10 oz. tins

Secret Aerosol  
**DEODORANT**  
Secret-Aerosol  
Rabais 20c off  
Form 5 oz size  
**99¢**

Duncan Hines-Assorted  
**CAKE MIXES 89¢**  
2 Pqts. 19 oz. Pkgs.  
Melanges a Gateaux-Assortis-Duncan Hines

Shirriff Good Morning Pot  
**MARMALADE 55¢**  
24 oz. Jar  
Marmelade Shirriff Good Morning

**FRUITS et LEGUMES TOUJOURS FRAIS ALWAYS FRESH FRUITS & VEGETABLES!**

From British Columbia-Canada Fancy  
**BARTLETT PEARS 33¢**  
**POIRES BARTLETT** lb.  
De la Colombie Britannique  
Canada de Fantaisie  
Sucrees et Juteuses

South African New Crop-Valencia-138's  
**OUTSPAN ORANGES 79¢**  
Doz. Doz.  
Oranges Outspan-De L'Afrique du Sud-Valencia-138

Imported-Delicious with Turkey  
**FRESH CRANBERRIES 39¢**  
Bte. 1 lb. Box  
Canneberges Fraiches-Importees.

Quebec Grown Canada No. 1  
**TURNIPS CELLO 59¢**  
5 lb.  
Navets Du Quebec-Canada No. 1

**IT'S MAINLY BECAUSE OF THE MEAT!**

Canada Grade "A"-Young-Tender  
**DELUXE GOLDEN BIRD TURKEYS 47¢**  
**DINDES DELUXE GOLDEN BIRD** lb.  
Canada Categorie "A"  
6 to 10 lbs.  
6 a  
10 lb.

Canada Grade "A"-Young-Tender  
**FROZEN TURKEYS 43¢**  
**DINDES CONGELEES** 6-10 lb. Lb.

Canada Categorie "A"-jeunes  
Popular Brands-Skinless-Defatted-Short Shank  
**LEG OF HAM 69¢**  
Ready to eat whole or half lb.  
Dans la Fesse Entier ou Maitre  
**JAMBON** Marques Populaires-Couenne-gras enleves

Maple Leaf-Sliced  
**RINDLESS BACON 85¢**  
Pqt. 1 lb. Pkg.  
Bacon Sans Couenne-Tranche-Maple Leaf

Dominion's Own  
**DOMINION WIENERS 59¢**  
Pqt. 1 lb. Pkg.  
Saucisses Fumees-Marque Dominion

Hygrade-Sandwich Size  
**SMOKED MEAT 99¢**  
4 Pqts. 2 oz. Pkgs.  
Smoked Hygrade-Format Sandwich

Prix en vigueur jusqu'a samedi le 10 Octobre 1970  
Prices effective until Closing Saturday Oct. 10th., 1970

CENTRE D'ACHATS **CAROL LAKE SHOPPING CENTRE**  
et-and **WABUSH PLAZA LABRADOR**

We reserve the right to limit Quantities!  
Nous nous reservons le droit de limiter les Quantites!

**WHEN YOU SHOP AT DOMINION**  
-You Go Home Happy!

# On the local scene

Dr. Noel Murphy, President of Humber Valley Broadcasting Co., owners of Radio Stations in Corner Brook and Stephenville visited our area last week. Dr. Murphy was again investigating the possibility of establishing a commercial station in Wabush. He advised Aurora that a petition would be circulated here, requesting the Federal authorities to grant his company the right to establish here in the very near future.

Labrador City Library Hours are as follows:

Monday-Wednesday-Thursday 7.00 p.m. to 9.00 p.m.

Tuesday-Friday - 2.00 p.m. to 5.00 p.m.

Saturday - 10.00 a.m. to 1.00 p.m.

Would persons with overdue Library books please return them during the above hours. Others are waiting for these books.

One of our "pet peeves" the Canadian Radio-Television Commission was in the news again last week, with another of their infamous paid advertisements. "The Canadian Radio-Television Commission will hold a Public Hearing in the Bonaventure Hotel in Montreal, Quebec, commencing on Tuesday, October 6, 1970 at 9.30 a.m. to consider, among other matters, the following applications:

Licence Renewal for Broadcasting Undertaking, Licence Expiring March 31, 1971.

C.F.G.B., Happy Valley, Nfld. Any comment or opposition in respect of the above-mentioned matters should be filed with the Secretary on or before September 24, 1970 in twenty (20) copies."

This was published in the Montreal Gazette and the St. John's Daily News, (1 insertion only) on Monday, September 26th, 1970. TWO DAYS AFTER submissions had to be in the hands of the Commission. This is the third time in recent months we have read notices as such. We are requesting our Federal M.P. to bring this matter to the attention of the House of Commons. This C.R.T.C. should operate on a business like basis or be disbanded. How can we comment?

We have been informed that

the Sir Wilfred Grenfell Hotel has finalized plans to expand their building by an additional 23 rooms; construction work to start early in the spring. The Manager informed Aurora that the expansion will be made without interruption of business. With the construction of a 44 unit hotel in Labrador City accommodations here will double within the next 12 months. M.C.N. Ltd. operators of the Grenfell recently took over management of the Churchill Falls Inn. This operation will now come under the control of the Sir W.G.

The Town of Labrador City advises that Stop Signs have been erected on Churchill St. Vehicle operators and pedestrians are asked to acquaint themselves accordingly.

October 4 - 10 is Fire Prevention Week and in conversation with Fire Chief Burchert of Labrador City, Aurora learned that the theme this year will be centered on school instruction. The week officially got underway on Saturday afternoon past. Remember Fire Prevention begins at home.

Eastern Provincial Airways, like most of the other major air carriers in Canada, has joined forces with Canadian National Railways to provide a full range of Express Services. This means that Express Packages can now be shipped by E.P.A. to any destination in Canada served by C.N. or other participating carriers on one Airwaybill and with one minimum charge. This should prove to be a boon to E.P.A.'s customers and will result in faster handling and reduced charges.

Class for Retarded Children to begin in January, 1971. Mrs. Vera Perlin of the Nfld. Association for the Help of the Retarded was in Labrador Week last week for a public meeting concerning the establishment of a special class for training retarded children.

A decision has been made to go ahead with the class; although some details remain to be straightened out, it is expected that the class will begin early in January, 1971. Miss Donna Sheppard of Grand Falls, has been selected as the first teacher

of this class. Miss Sheppard is currently in England completing her period of training but is expected to arrive in the area shortly after Christmas. She will also be able to conduct home classes for children whose physical handicaps prevent them from attending this special class. Mrs. Perlin, stressed during her visit that the association had previously decided not to expand its program of special classes, in the province. An exception has been made for Labrador West because she felt that area has problems with regard to isolation and because the feeling of being neglected by the rest of the province is so strong here. Two children from Labrador West attended the Vera Perlin School in St. John's last year and will be among the first pupils in the new class.

As the recommendation of a Psychiatrist or other suitably trained professional is necessary for admission to such a class,

only children whose parents have had them so assessed, will be admitted to the class initially. There is a strong possibility however, that Mrs. Perlin will be able to return to the area in late November or early December accompanied by a Psychiatrist who will examine any child whose parents and family doctor feel could benefit from the special class, whether now or in the future. Any parents who feel they would like to have their child seen by this Psychiatrist or who would like further information about the special class are asked to contact either Mrs. Helena Moore at 944-2241 or Mrs. Kay Armstrong at 944-5000.

Norman and Joan Felker are happy to announce the birth of a daughter Eileen Norma, Sept. 12, 1970 at the Capt. Wm. Jackman Memorial Hospital.

Kathy Combden wishes to

announce the arrival of twin brothers on September 17. The proud parents are Mr. and Mrs. Edward Combden of Labrador City.

Norman and Joan Felker wish to extend their thanks and appreciation to their many friends and neighbours for their kindness during Joan's and baby's illness. Special thanks are extended to Drs. Wilbush and Ballard, and the nursing staff of the hospital.

The Wabush Recreation Center wish to announce the availability of a Physical Fitness Program for Women, which will commence on Monday, October 19th at the Rec. Center. The program under a qualified instructor will cover 30 weeks to May 31, 1971. The cost of \$15.00 will include pool, sauna, and shower facilities. Interested parties are asked to contact the Wabush Recreation Center, NOW.



Mr. Hounsell (left), Manager Ayre's Ltd. Wabush, presents a 30-30 Winchester repeating Carbine to Mr. & Mrs. Andrews. They were the lucky winners of Ayre's "Break-a-Balloon" contest.

## LES GANTS NOIRS

ASHUANIPI SOCIAL CLUB  
COMING  
OCT. 12 to OCT. 25

### "GANTS NOIRS"

ADMISSION \$1.00 PER PERSON  
WEEK-ENDS \$1.50 PER PERSON

**CAROL PAINTING LTD.**

**PAINTING CONTRACTOR**

**DOMESTIC AND INDUSTRIAL PAINTING**

REASONABLE PRICES  
5 MAPLE CRESCENT APARTMENTS  
PHONE 944-5551

PHONE TODAY FOR FREE ESTIMATE

**PHONE 944-5551**

# The Aurora

Published every Wednesday at Labrador West, Newfoundland and Labrador and printed by Robinson-Blackmore Printing and Publishing Limited, O'Leary Avenue, St. John's, Newfoundland. Subscription rate Canada and Foreign \$6.50. Mailing address, P.O. Box 2090, Labrador City.

## Editorially speaking

In that the political pot is boiling again with talk of a November Provincial election, we feel it could be of interest to review the political scene of recent years. For the younger voters and newcomers to the province, it may supply some insight into past political campaigns and to readers over 35, might refresh memories. This will be the first of a 3-4 part series we will cover over the next two months.

Newfoundland has known only one premier and one government since Confederation, the Liberal government of Premier Smallwood. In six general elections since 1949, the Liberal party has been returned to power with overwhelming majorities. In that period, the number of provincial electoral districts has ranged from 27 to its present number, 41.

The Progressive-Conservative party, the official opposition in Newfoundland has had Assembly representation varying from seven seats in 1962, its top representation, to three in 1966. At the same time, the PC's have always received a substantial share of the total vote in each election, consisting about 35% on the average.

On the federal scene, Newfoundland's representation in the House of Commons is seven. Until the 1968 election, the Liberal party always had the vast support of the majority of voters, as high as 85% in some ridings. Before 1968, the Conservatives had been able to elect two members only to the Commons, both in St. John's ridings. On several occasions seven Liberals represented this Province in Ottawa. However in a complete turnabout in the 1968 election, six of the seven seats went to PC members, the other going Liberal, to the present Minister of Transport, the Hon. Donald Jamieson. This tremendous change was regarded by some as an anti-Smallwood vote, although it was a federal election. In Newfoundland politics, the provincial parties are deeply involved with the federal parties, and more often than not, federal candidates are chosen by provincial leaders and campaigns for federal seats are conducted by the provincial parties in much the same manner that elections are fought at the provincial level.

Back on the home front, despite their vast numerical superiority in the House of Assembly, the Smallwood Liberals found that their political path was not always strewn with roses. There were many obstacles, as the province strives to catch up with the rest of Canada; tried to overtake a 20-year lead enjoyed by the other 9 provinces.

(To be continued).

## ARTHUR F. MILLER

AVOCAT - LAWYER

## SHOPPING CENTRE MALL

LABRADOR CITY

OPEN 9:00 a.m. - 5:30 p.m.

PHONE MONDAY THROUGH FRIDAY 944-5909

## LEGAL CARD

## DAVID B. SPARKES

Lawyer - Advocate

Shopping Centre Mall

OFFICE HOURS: - 9 to 12 and 1:00 to 5:00

Telephone 944 - 5948 (Residence).

944 - 5555 (Office).

## Here 'n' There

**NAMES MAKE NEWS:** The Canada Gazette records the fact that letters patent have been issued to a new Montreal company, the name of which explores new frontiers in bilingualism, punctuation and sheer mystification. It is called Formation For-Mi-Dable Canada Ltee., or Tre-Men-Dous Formation Canada Ltd.

**SPREADING THE WORD:** A technique of communicating with employees imported by Bell Canada (from the U.S.) early in 1969, is proving popular with other large Canadian organizations.

It is a version of the telephone answering service. Public relations staff members daily record a few minutes of new items about company affairs and company people, and employees simply dial a number to get the news. This supplement to traditional bulletin boards and staff publications is currently in use by Canadian National Railways, Northern Electric Co. Ltd. the telephone companies in New Brunswick and Manitoba, Hydro Quebec and Polymer Corp. Among the benefits of the device is its immediacy in dealing with rumors, often unfounded, that abound in large companies.

**CHURCHILL FALLS:** Churchill Falls (Labrador) Corp. Ltd. of St. John's, Nfld. has recently awarded 13 contracts worth more than \$8 million for its Churchill Falls hydro-electric development. Bedard Girard Newfoundland Ltd of St. John's has a \$3.7 million contract for maintenance of the main construction camp and most of the satellite camps. Janin Construction Ltd. of Montreal has \$1.8 million contract to build sections of three 735,000 transmission lines that cross the Churchill River near the power station, and H.J. O'Connell Ltd. of Montreal has a \$1 million contract for improvement of the 113-mile road from Esker to the power station. The road will be used to bring in heavy equipment during the winter.

**YAMAHA BROADENS ITS RANGE OF LEISURE PRODUCTS:** The corporate symbol is the same: three tuning forks. The products could scarcely be different. Parent Nippon Gakki Co. produces pianos and other musical instruments while subsidiary Yamaha Motor Co., headquartered near Hamamatsu, turns out snarling motorcycles, snowmobiles and boats. Yamaha Motor was spun off the parent in 1955 to make motorcycles. From the beginning, the company entered machines into racing events, both to prove the machines and win sales by winning races. A straight-forward approach, and it worked. The company is now producing between 50-55,000 motorcycles a year in Japan and his joint ventures plants turning out bikes in Taiwan, Mexico and Malaysia. A new plant is now being built in Singapore. The company's motorcycle experience led to production in 1961 of fibre-glass-reinforced plastic boats and outboard engines. The boats range from small pleasure cruisers to larger commercial vessels, for example, police patrol boats. In 1968, the company entered the snowmobile market. Yamaha has a foot in two camps here because it has a contract to supply snowmobile engines to a Quebec manufacturer, Glaston Inc., maker of the Snojet brand. Yamaha expects to sell between 30,000 and 50,000 engines a year under this contract. Yamaha even has a stake in the car market: one of its plants assembles the Toyota 2000 sports model.

**DISHONEST INPUT:** The old saying about computer usage (garbage in, garbage out), can have an equally but more sinister meaning according to Dr. Harvey S. Gellmann, president of DCF Systems Ltd. He advised computer users last month to beware of criminal input, criminal output. If unscrupulous employees have access to programming, he said, a company can be robbed before it knows about it. He gave these horrible examples of lax security: A group of five men, with a sound knowledge of the

computer systems involved defrauded two banks of some \$1 million. The vice-president of a brokerage company created punch cards to transfer credits to his own account. The take \$250,000.

**THIN RED LINE:** Whatever else may befall Dr. John Young's wage guideline, he could take comfort from the recent announcement that the line has been well and truly held in the upper echelons of the Canadian Armed Forces. New rate of pay applying to brigadier-generals and above, retroactive to January of this year, amount to 5% a year.

**JAIL-LIKE LIVING:** Walter Pitman, a candidate for the Ontario leadership of the New Democratic Party, said last week that there were about 800 men living in Sudbury in accommodation "not unlike concentration camps." He told a party rally in Ottawa that many of the men are Maritimers brought to Sudbury by Canada Manpower Centres to work in the mines. Mr. Pitman said the men share small cubicles, common washrooms and are not allowed female visitors or to drink beer. Unions in Sudbury are now working to better the conditions of the men. Mr. Pitman said. Weekly charge for the accommodation is \$35.00.

**QUEBECAIR:** Imperial Trust Co., Montreal, and Sogebry Ltee., a private investment company controlled by the Brilliant family of Rimouski, Que., signed an agreement under which Imperial Trust will acquire 90% interest in Quebecair Inc. from Sogebry. Terms weren't disclosed. R. Howard Webster, president of Imperial Trust, said no changes in management and administration of Quebecair were contemplated.

**IN-LAW LIVING:** A British Health Department survey showed more than 40% of Britain's elderly people live with one or more of their children.



almost full, you are better off to try for a window seat as usual. But if the load isn't that big, the middle rows of seats have a lot to recommend them. For one thing, in the middle you get a better view of the movie (there are three separate screens in economy, another in first class and, on Air France, the same movie is shown on all four). There is one economy section reserved for people who hate movies.

3. If you are subject to motion sickness, avoid the rear compartment of the 747 like the plague. The 747 is a long aircraft and, even in the smoothest air, there is a constant rotating movement of the tail section, which, again, reminds one of an ocean liner. You don't get those short, sharp bumps of normal aircraft turbulence, but rather a constant, gentle heaving back and forth as in a big ship in a very slight swell.

4. Mind you, if you can put up with this, the rear compartment has its advantages. To balance off the weight evenly through the aircraft, they tend to pack the passengers in the first and second sections over the centre of gravity, and there is likely to be a lot more space behind. It may be of interest to note that Trans World Airways' 747 service out of Paris to New York provides an "Adult" movie in the back section, family entertainment in the others. For that airline, it seems, if you want a little spice you have to be

ready to put up with some bumps.

5. All that the airlines and the Boeing Co. have claimed about the 747's seat is true. It is wider than ever before, and is shaped far better. Except for a little less leg room, the Air France economy 747 seat is every bit as comfortable as first class on any other plane.

6. First class on the 747 is really something, at least, if you like to see and get to know your fellow travellers. For one thing, there's that much-touted upstairs lounge, which gives you somewhere to go. Right now it is relatively noisy up there because of the airflow directly over your head. Later 747s will have more sound insulation to counter this, and existing models will be retrofitted with it in the months ahead.

7. But the real reason why the first-class passenger tends to be drawn, like it or not, into general conversation is the sheer size of the compartment. Because, for more than half its length, the 747 curves around the nose, the seats tilt very slightly inward. This, coupled with the fact that other passengers can stand, chat, lean over and talk to you without interfering with cabin service in any way, destroys the rather "London Club" atmosphere of conventional first class. If you like to do some quiet paper work, or just rest insulated from your fellow first-classers, you'll find the good old DC-8 still has its charms.

8. Air France has an excellent idea to help economy passengers while-away the long hours between meals. A series of buffet tables are set up along the section at which passengers can pick up an impressive variety of goodies. Smoked salmon, pate, small pastries, and also buy a drink. With a half load, or even two-thirds, this seems to work well. However, when completely full the area is too crowded.

9. Some vital statistics: There are nine hostesses, four stewards and one Chef de Cabine on an Air France trans-Atlantic 747. There are 12 washrooms, three for first class and nine for everyone else.

10. As in all aircraft, there are some choice seats worth remembering if you get to the counter in time to choose. In the rear section, the window seats on the right side in rows 51 and 52 on Air France are singles with lots of room to stretch out. If you don't mind the bumps, these are choice for the man flying alone.

There are three window seats on both sides of rows 40, 30 and 18 that have perhaps 15 feet of leg room because they are beside the doors. If you like to stretch out, these are for you. But take warning: They are also alongside the galleys, and at meal times there can be a lot of rather frantic activity going on alongside your shoulder.

Finally, the first row of first class gives you almost a pilot's eye view.

**HOW TO JET BY JUMBO:** The atmosphere around a Boeing 747 as it loads and prepares for flight is remarkably like that at dockside when a big ship is getting ready to sail. There are perhaps 40 people working around the aircraft, and the huge tractor that has to push or pull it away from the loading ramp is almost as big as most harbour tugs and many times more powerful.

To heighten the similarity of trans-Atlantic ocean travel, jumbo-jet departure and arrival times seem to be as predictable as when ships' captains depend on the tides and the winds. If you are taking an autumn trip to

Europe this year, or to Chicago, from Montreal, your only chance of sampling this new service will be by Air France. At present it flies daily, Paris-Montreal-Chicago, Chicago-Montreal-Paris. Should you feel like taking the flight, here is a list of pros and cons worth keeping in mind:

1. It takes longer to load 360 passengers and their baggage into a 747 than it does to load 180 or so into a 707 or DC-8. This shouldn't necessarily be so because there are more entrances, more baggage containers, etc., but it does.

2. If you are travelling economy, and the flight is full or

# BOMBARDIER SKI-DOO

The lowest price on a reliable, proven Snowmobile ever offered anywhere. Get a genuine BOMBARDIER "Elan" SKI-DOO. The new full sized machine with even less weight and a big 12 h.p. Rotax engine. For this unbelievable figure.

**\$595.00**

(Electric Start \$100.00 extra) Plus Nfld. SSA Tax. Buy a brand new machine now at less than the price of most used one.



**SAVE—SAVE—SAVE NOW.**

**GO ONE BETTER!**

**GO SKI-DOO!**

**FOR FURTHER INFORMATION CALL VINCE MARGE. Res. 944-5117, Bus. 944-2617**

**Or visit the showrooms of CITY MOTORS (LABRADOR) LTD.....**

# mining news

**MINING IN NORTHWESTERN ONTARIO:** Northwestern Ontario has a treasure of buried wealth in the form of iron ore, copper, lead, zinc, nickel, gold and silver. In 1969, for example, approximately two-thirds of all mining claims recorded in Ontario (28,646 out of a total of 45,852), were made for the northwest region of the province.

Everywhere there is talk of expansion and in other cases the move from exploration to actual mining. One of the brightest prospects is that of Great Lakes Nickel Ltd. The company has an outline of a deposit of more than 100 million tons of low grade copper-nickel ore, 38 miles south of Thunder Bay. The firm is presently planning an integrated mining, milling, smelting and refining complex to handle production of six million tons of ore per year. Acres Management Services Ltd., are operations manager for Great Lakes Nickel Ltd. The cost of the project is estimated at \$100 million.

Mining claims in the northwest are distributed throughout the region. The increase in Thunder Bay claims in 1969 was 3,649 vs 2,799 in 1968. The Kenora area recorded 2,364 claims in 1969 vs 2,453 in the prior year. One of the largest increases was in the Red Lake claim area with 10,999 claims recorded, four times the 2,450 of 1968. The Patricia area had 11,634 claims last year vs 4,482 in 1968.

One of the most promising developments is by Selco Explorations Co., at Uchi Lake, near Red Lake, where a \$5 million base metal operation is shaping up. The Ontario Department of Mines is helping to build 45 miles of access road from Ear Falls to the mining area.

Griffith Iron Ore Ltd. completed a \$6 million storage and shipping terminal in Thunder Bay in 1969. A large open-pit reserve, the Lake St. Joseph deposit, is now being pre-tested by Steep Rock Iron Mines Ltd. Iron ore is also being mined by Caland Ore Co., which leases an ore body from Steep Rock. Steep Rock Iron continues mining operations from its own ore deposit.

At Geco Mines, owned by Noranda Mines Ltd., Manitouwadge, copper, zinc and silver are being mined at the rate of approximately 4,500 tons per day. In the same area is Willroy Mines Ltd., also mining copper, zinc and silver. In 1969 it acquired full ownership of the adjoining Willecho Mines Ltd. Lake Shore Mines Ltd. continues gold mining at its MacLeod Mosher mine at GERALTON in the Little Long Lac area. A zinc ore body being phased out is that of Zenmac Metal Mines Ltd., near Schreiber.

New employment for 400-500 workers is expected to result when the International Nickel Co. of Canada's \$35 million nickel development at Shebandowan cranks up to production in 1971. It will be a 3,000-ton-a-day operation. Steel Co. of Canada's iron ore operation at Bruce Lake is a \$100 million development. Canadian National Railways has built a 68-mile track into the area. Stelco is shipping only pellets from its plant. Most of the other ore producers ship both pellets and raw ore. Pellet shipments are mostly processed through Valley Camp Coal Co. of Canada on the Mission River, where modern belt-loading facilities exist.

Anaconda Co., north of Nipigon, has an airstrip, access roads and buildings but so far has

not made long-range contracts.

The value of minerals produced in Northwestern Ontario in 1969 reached a total of \$136.5 million. After pulp and paper and forest industries, mining is the region's largest industry. In 1970 it is expected that the total value of mineral production will exceed \$150 million. The breakdown of mineral production in the northwestern region by volume for 1969 is as follows: \$58.7 million - Copper, Lead, Zinc. \$56.3 million - Iron Ore. \$15.3 million - Gold. \$4.0 million - Nickel. \$2.0 million - miscellaneous.

## IRON ORE SHIPMENT OF 11,895 MILES:

BritishSteelCorporation, the United Kingdom nationalized steel company, has purchased 200,000 tons of high grade Australian Iron Ore for delivery this year. The first shipment of 72,044 wet long tons of ore under the contract was recently transported from Port Hedland to Amsterdam, Holland in the S.S. Pacific Bridge. The ore was unloaded in Amsterdam into smaller ships for delivery to the steel mill in Glasgow, Scotland. It took 34 days for the ship to circle the Cape on its trip to Europe.

**GOLD:** Republic of South Africa in 1969 produced a record amount of gold. Total output was 31,275,874 ounces with a value of \$1,095,603,150. This was 107,032 ounces higher than the 1968 output, also a record year.

**IRON ORE:** From New Zealand. The Marcona Corporation has contracted to ship 9,450,000 tons of magnetite concentrate (recovered from beach sands at Caipipi, North Island) to Japanese steel mills. The \$80.0 million contract calls for initial shipment in 1971 under the 10-year contract. Marcona is already shipping Peruvian iron concentrates and pellets to Japanese steel mills.

## P.C. NOMINATING CONVENTION

There will be a Progressive Conservative Party nominating convention for the District of Labrador West on October 8 - 9, 1970. The first will be held at the McManus School Auditorium, Labrador City, on Thursday, October 8 at 8.00 p.m. The second will be held at the Churchill Falls, Community Centre, on October 9 also beginning at 8.00 p.m. All eligible voters 19 years and over are welcomed to participate. Provincial P.C. Party Leader, Frank Moores, and members of the Provincial Executive will be attending the meetings.

# Speaking of Sports

We first wish to apologize to the Executive and members of the Wabush Industrial League championship team, on the caption error in last week's Aurora. Page one should have read the league executive; from left to right Elizabeth Delahunty Secretary, B.R. Rough, umpire-in-chief, Gordon Martin, President, and Jim McCarthy, Vice-President. Page 13, should have read, members of the "Roadrunners." Team winners of the Wabush Industrial Softball League. Several members were absent from this photo.

On Friday past we attended the Annual Labrador City Ladies' Softball, Dinner-Dance and presentation of prizes. Congratulations to P.K. King and his executive on an excellent event. Next week we will carry pictures and details of this most successful affair.

We have received the following from the Labrador City Recreation Commission, thru the Recreation Director, Mr. R. Beliveau. This schedule is effective immediately:

**LABRADOR CITY ARENA:**  
Public Skating: Wednesday - 8.15 p.m. - 10.00 p.m.  
Saturday - 1.15 p.m. - 3.15 p.m.  
Saturday - 8.15 p.m. - 10.00 p.m.  
Sunday - 2.15 p.m. - 4.00 p.m.

**LADIES AND TOTS**

Skating: Tuesday - 10.00 a.m. - 11.30 a.m.  
Thursday - 10.00 a.m. - 11.30 a.m.  
Figure Skating: Tuesday - 4.00 p.m. - 5.00 p.m.

Wednesday - 4.30 p.m. - 6.30 p.m.  
Saturday - 3.30 p.m. - 6.30 p.m.

During the last two weeks of each month a professional instructor will be in attendance and during this period additional sessions will be held on Thursday 4.45 p.m. - 6.30 p.m. and Sunday 12.00 noon to 2.00 p.m.

Minor Hockey: - Monday - 4.45 p.m. - 6.45 p.m.

Tuesday - 5.00 p.m. - 7.00 p.m.

Friday - 4.45 p.m. - 8.45 p.m.

Minor Hockey: Saturday 8.00 a.m. - 11.45 a.m.

Intermediate Hockey: Tuesday - Thursday - Friday - Sunday.

Industrial Leagues from Labrador City and Wabush will again be active this year.

Broomball League. Every Monday from 7.00 p.m. to 12.00 Midnight.

Ice Rental Rates: 8.00 a.m. to 9.30 p.m. \$20.00 per hour.

9.30 p.m. to 1.00 a.m. \$15.00 per hour.

1.00 a.m. to 8.00 a.m. \$10.00 per hour.

Building Rental (when available) \$300.00 per day. This is at the approval of the Recreation Commission.

All organizations wishing to make long-term reservations are asked to contact the Arena, as soon as possible, phone 944-5277.

The Hockey Association are presently negotiating with St. Mary's University and the N.A.H.A. to have teams visit

here for exhibition series.

Four or five local referees will be attending a Hockey Clinic being conducted at Stephenville on 10-11 Oct. Joe Byrne will be holding a coaches and referee's Clinic here, near the end of the present month.

**SKIING:** Mr. Rene Beauchamp, Ski Coach, is presently in the area to promote competitive skiing. Conditioning programs will begin shortly.

**BADMINTON:** The Labrador City Badminton Club meets at the Notre Dame Gym every Wednesday 7.00 p.m. - 10.30 p.m. and Sunday 2.00 p.m. - 5.00 p.m. New members are welcome.

**GYMNASTICS:** The Gym Club meets every Tuesday & Thursday from 7.00 p.m. to 8.30 p.m. and Saturday 9.00 a.m. to 11.30 a.m. at the N.D.A. Gym.

**VOLLEYBALL & BASKETBALL** Leagues will shortly be operative.

**TAMARACK GOLFB CLUB NEWS**

The Golfing season is officially closed, and no doubt all 503 members will agree that it has been our most successful season since the club started.

The weather was so good that out of a total of 30 planned tournaments, only two were rained out.

The ladies' section held a tournament every Wednesday for 11 consecutive weeks and participation was very high.

The Junior Members turned out each Monday morning bright

and early for their telex tournaments. All the Junior deserve a hearty pat on the back, as word has just been received that Tamarack has won the Shield donated by Dr. Mike MacGuire. The final standings were: Tamarack 70.8; Blomidon 71.1; Harmon 71.1; Bally Haly 71.3; Grand Falls 73.3.

Special thanks go to Jim Thomson, Junior Chairman, who organized these tournaments.

Tamarack annual trophy night, dinner and dance was held on Saturday, September 26. Trophies presented were:

Opening Tournament: Ladies' - Marge Roberts; Men - Yvon Morin;

Captain's Trophy - Ladies' - Fridel Spitznagel; Men - Bill Smith;

Vice Captain's Trophy - Ladies' Sandy Swyers; Men - Mike Valencic;

Junior Medal Play - Andrew Robertson;

Closing Tournament - Ladies' Millie Mayberry; Men - Bill Smith;

The closing tournament trophies were donated by Mr. Reg. Duchesneau, who made the presentations. Many thanks Reg. The final presentations of the evening were to the club champions. They were:

Class C men - Guy Harrington; Class B Men - Ed Cobey; Junior Champion - John Bastow Jr.; Ladies' Champion - Marge Roberts; Men's Champion - John Murphy.

Sincere congratulations to all the winners.

The committee hopes that all members enjoyed the season - see you in '71.

Notice from the Wabush Recreation Center. **MEN: ARE YOU OUT OF SHAPE?** Register now at the Wabush Recreation Center for a Physical Fitness Program commencing on October 14, 1970. A qualified instructor will lead classes. Two nights weekly. Pool, sauna, and shower facilities included in the 11 week course at a cost of \$10.00. For further information contact the Wabush Rec. Center.

**Notice**

A HODGE PODGE, sponsored by the Guiders and Local Association members, will be held on Friday, October 16 at 8 p.m. in the Roman Catholic Basement, Labrador City. The evening will also include Card games (Auction, Contract) and a Tea. Please bring your own cards.

Donations of miscellaneous items such as books, knick-knacks, toys, etc., baked goods and handicrafts would be greatly appreciated.

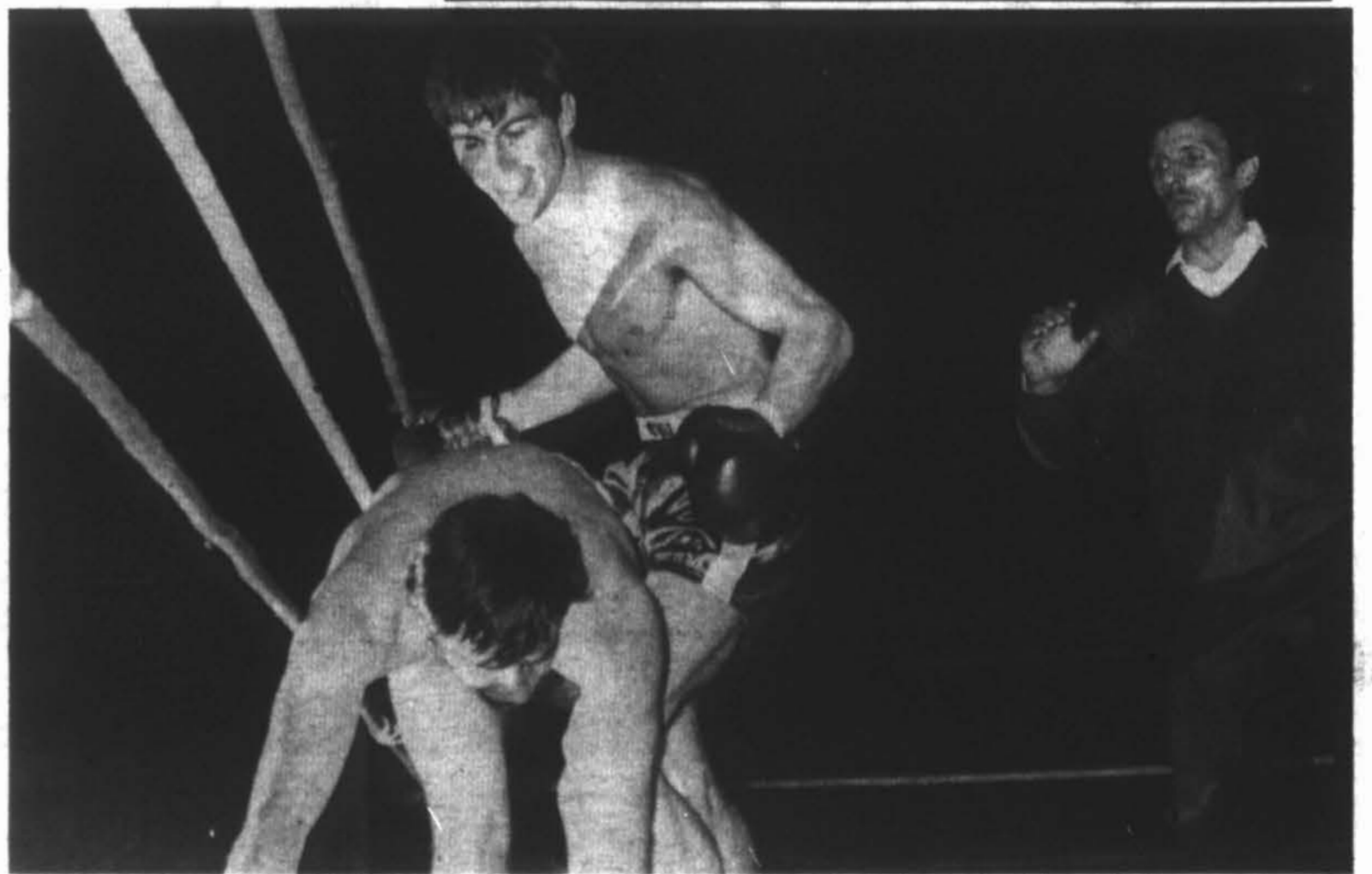
Miscellaneous items may be delivered to any Brownie or Guide Leader or to 509 Bartlett Drive. Baked goods should be delivered anytime Thursday night or Friday to the Roman Catholic Church Basement.

**HELP WANTED**

**WAITRESS REQUIRED FOR THE SIR WILFRED GRENFELL HOTEL DINING ROOM. MUST HAVE NEAT APPEARANCE AND PREVIOUS EXPERIENCE. APPLY IN PERSON, TO THE MANAGER, SIR WILFRED HOTEL, WABUSH.**



Mr. K. Hiscock (right), Immediate Past President, Carol Curling Club, presenting Mr. and Mrs. E. Cobey with silver trays and service set, prior to their departure for Chalk River, Ont. Approximately 160 Club members and friends attended the function for Ed (President 1969-1970), and Dallas.



Veteran Jean-Marie Avena of Montreal, folds under the battering of Stan Hayward, during an exciting semi-final bout held last month at the Labrador City Arena. Hayward disposed of Avena in the second round. This is three consecutive wins for Stan, two were by knockouts.

# Labrador television guide

**WEDNESDAY, OCT. 7**  
 3:30 - EDGE OF NIGHT  
 4:00 - TAKE THIRTY  
 4:30 - BONNIE PRUDDEN  
 5:00 - HISTORY MAKERS  
 5:30 - BOBINO  
 6:00 - BOITE A SURPRISES  
 6:30 - BANANA SPLITS  
 7:00 - SINGALONG JUBILEE  
 7:30 - 5 YEARS IN THE LIFE  
 8:00 - MCQUËEN  
 8:30 - TBA  
 9:00 - 100,000 CHANSONS  
 9:30 - TBA  
 10:00 - BONANZA  
 11:00 - ALL AROUND THE CIRCLE  
 11:30 - NEWS

**THURSDAY, OCT. 8**  
 3:00 - MR. DRESSUP  
 3:30 - EDGE OF NIGHT  
 4:00 - TAKE THIRTY  
 4:30 - BONNIE PRUDDEN  
 5:00 - ARTHUR & THE SQUARE KNIGHTS  
 5:30 - BOBINO  
 6:00 - BOITE A SURPRISES  
 6:30 - BANANA SPLITS  
 7:00 - BILL COSBY  
 7:30 - NATURE OF THINGS  
 8:00 - CHER ONCLE BILL  
 8:30 - A LA BRANCHE D'OLIVIER  
 9:00 - TBA  
 9:30 - TBA  
 10:00 - THURSDAY NIGHT  
 11:00 - QUOTE & COMMENT  
 11:30 - NEWS

**FRIDAY, OCT. 9**  
 3:00 - MR. DRESSUP

3:30 - EDGE OF NIGHT  
 4:00 - TAKE THIRTY  
 4:30 - BONNIE PRUDDEN  
 5:00 - BIRDMAN & GALAXY TRIO  
 5:30 - BOBINO  
 6:00 - BOITE A SURPRISES  
 6:30 - WORLD OF MAN  
 7:00 - JULIA  
 7:30 - GREEN ACRES  
 8:00 - TBA  
 8:30 - DONALD LAUTREC  
 9:30 - HERE COME THE STARS  
 10:00 - MISSION IMPOSSIBLE  
 11:00 - NEWS  
 11:20 - FEATURE FILM Patterns

**SATURDAY, OCT. 10**  
 4:00 - HI DIDDLE DAY  
 4:30 - KLAHANI  
 5:00 - LAUREL & HARDY  
 5:30 - GALLOPING GOURMET  
 6:00 - BUGS BUNNY  
 7:00 - ONCE MORE WITH FELIX  
 7:30 - ONE MORE TIME  
 8:00 - REGARDEZ REGARDEZ BIEN  
 9:00 - NAME OF THE GAME  
 10:30 - PIERRE JEAN JACQUES  
 11:00 - CINEMA La Loi des Hommes

**SUNDAY, OCT. 11**  
 3:30 - INTERNATIONAL ZONE  
 4:00 - MY WORLD & WELCOME TO IT  
 4:30 - INTER-COLLEGIATE MUSIC FESTIVAL  
 5:00 - TOUR DE TERRE  
 5:30 - THE GROUP  
 6:00 - WALT DISNEY

7:00 - QUELLE FAMILLE  
 7:30 - ATOMES ET GALAXIES  
 8:00 - ED SULLIVAN  
 9:00 - WAYNE & SHUSTER  
 10:00 - WEEKEND

**MONDAY, OCT. 12**  
 3:00 - MR. DRESSUP  
 3:30 - EDGE OF NIGHT  
 4:00 - TAKE THIRTY  
 4:30 - BONNIE PRUDDEN  
 5:00 - SUPER 6  
 5:30 - BOBINO  
 6:00 - BOITE A SURPRISES  
 6:30 - D'IBERVILLE  
 7:00 - GOVERNOR & J.J.  
 7:30 - MUSIC TO SEE  
 8:00 - A LA SECONDE  
 8:30 - MONT-JOYE  
 9:00 - BOLD ONES  
 10:00 - DEBBIE REYNOLDS  
 10:30 - NEW MAJORITY  
 11:00 - NEWS

**TUESDAY, OCT. 13**  
 3:00 - MR. DRESSUP  
 3:30 - EDGE OF NIGHT  
 4:00 - TAKE THIRTY  
 4:30 - BONNIE PRUDDEN  
 5:00 - H.R. PUFNSTUF  
 5:30 - BOBINO  
 6:00 - BOITE A SURPRISES  
 6:30 - BANANA SPLITS  
 7:00 - NEWS DIGEST  
 7:30 - THIS LAND  
 8:00 - HAPPY DAYS  
 9:00 - MOI ET L'AUTRE  
 9:30 - RUE DES PIGNONS  
 10:00 - DORIS DAY  
 10:30 - TBA  
 11:00 - CBC NEWS  
 -(Programs subject to change.)

# The lighter side

**RESERVATIONS:** The guardian in England published the following notice from a Civil Service Club letter, "As requested, a double room has been reserved. Please confirm, however, that the occupant of the other room will be either your wife or another civil servant." Or, as David Frost is wont to say, "Mr. X has appealed to every member of Parliament...at one time or another."

**THE SECOND HONEYMOON:** The lady who had been married for twenty years was delighted when her husband said they could take a vacation on their anniversary to relive their honeymoon. "Wonderful," she said. "I'll get in the mood by putting on my negligee." She did this, sat down, and leaned her head on her hand. "It sounds so exciting," she said. "In fact, my breasts are getting warm and tingly just thinking about it." "They should," replied her husband. "One of them is in the oatmeal, and the other in your coffee."

**THE COMPUTER:** The general asked the computer, "Will there be war or peace?" The computer flashed, buzzed, blinked, then droned out an enigmatic, "Yes." "What do you mean yes," roared the general. "Yes what?" The computer again flashed, buzzed and blinked. Feebly its electronic voice answered, "Yes, SIR?"

**SUICIDE:** John was despondent. He'd been married for ten years to a beautiful woman and had nothing to show for it except twelve children. And he was finding it more and more difficult to support them. He went to the basement and, climbing on a chair, tied a rope around his neck. He mumbled, "My dear wife has given me everything and I've had nothing to give her, nothing but twelve children to feed, wash, clean, worry over..." He tightened the rope about his throat and shut his eyes. Just then his wife dashed downstairs, shouting: "John! Don't do it! You're hanging an innocent man."

**STATISTICS:** A girl was reading about birth and death statistics. Suddenly turned to a man near her and said: "Do you know that everytime I breath a man dies?" "Very interesting," he replied, "Why don't you try a mouthwash."

**TRAINING:** Two country girls presented themselves at a house to apply for positions. "Do you have a certificate of professional aptitude?" the madame asked. When the country girls shook their heads the madame recommended a certain school of specialization in Montreal East. A month late one of the girls returned to Mount Royal, presenting her diploma from the school for professionals. "And your friend," the madame inquired. "Isn't she with you?" The girl lowered her eyes and said sadly, "no, she died at the school." "Died! But what could have happened to her?" the madame asked in astonishment. "She," the girl replied, "suffocated taking her pills."

**THE REPORT CARD:** The boy walked unhesitatingly up to his father and said: "Dad, here's my report card. And here also is an old one of yours I found in the attic."

**FULL HOUSE:** "I haven't a room left," said the hotel clerk. "But I can give you a cot in the ballroom. There's a lady over in the corner but I have a feeling that if you don't turn on the lights, she won't object." "That's find with me," said the tired man and away he went. A few minutes later the man came dashing back to the desk. "Say," he said breathlessly, "That woman in there...she's...she's dead!" "I know that," said the clerk, "but how the hell did you find out?"

**ALMOST HUMAN:** "I've invented a computer that's almost human," boasted one scientist. "You mean it can think?" asked his friend. "No, but when it makes a mistake, it can put the blame on some other computer."

**OLD GAG:** One of the gods from Olympus decided to come to earth and have an affair with an earth maiden. After 24 hours of love-making the satisfied Olympian drew himself up. "I'm Thor," he told the exhausted girl. "You're Thor?" she lisped, "I'm a lot more thore than you are!"

### MIND TEASER

If two numbers total 77, and if the difference between their squares is 1,463, what are these two numbers?

### ANSWER

29 and 48. Add 1,463 to the square of 77; divide by the sum of 77 and 77 for the larger number.

## Dixie Lee Fried Chicken TAKE-HOME MENU

Sir Wilfred Grenfell Hotel  
**WABUSH**



IF YOU LIKE CHICKEN — YOU'LL LOVE DIXIE LEE		
<b>DIXIE SNACK</b> 2 Pcs chicken with french fries \$1.05	<b>DIXIE DINNER</b> 3 Pcs chicken, french fries cole slaw and roll \$1.55	<b>ECONOMY BOX</b> 10 Pcs chicken \$3.60
<b>DIXIE BUCKET</b> (4-6 Persons) 12 Pcs chicken french fries and rolls \$4.95		<b>DIXIE BARRELL</b> (7-10 Persons) 20 Pcs chicken \$5.95

NO WAITING

Phone 3221

FAST SERVICE

strikes

RIO DE JANEIRO  
dreaded Brazilian death  
killed hundreds of p  
the last two years, en  
inactivity during the

# From the national press

**SURPRISES AHEAD IN THE BIG COUNT?** In the U.S., the reaction of many state and city officials to the first returns of the 1970 census is one of disbelief and anger. With some dramatic exceptions, the headcount frequently shows fewer people than had been estimated by local authorities, and by the U.S. Census Bureau itself. The issue is stirring up much heated protest and officials are quick to blame the Bureau's idea of mailing census forms instead of sending enumerators. Because a wide range of revenues as well as political representation are determined by size of population, substantially more than local pride is involved. The U.S. census takers are stickling by their figures. They point out that 86% of the forms are being mailed back, more than the 82% suggested by trial surveys, and enumerators are sent to the homes that fail to make returns.

When Canada undertakes its version of a census-by-mail in 1971 there should be substantially fewer complaints. The wily old Dominion Bureau of Statistics is not mailing its forms to households, probably not a bad idea, given the on-and-off state of the mails. These will be delivered by hand and the numbers in the household ascertained at that time something not done in the U.S. If the Canadian recipients live in urban communities, they will be expected to mail the forms back. In rural areas, the forms will be collected. In all instances, enumerators will check off the received against their preliminary lists and then call on those who fail to provide a return.

Some complaining about under-estimates can, however, be expected from Canadian constituencies and municipalities. The U.S. returns are making it clear that all earlier projections of population change had under-emphasized the shift from rural to urban areas and from centre-city living to suburbia. The Economic Council of Canada, a few years ago predicted that by 1980, at least 81% of Canada's population would be urban as against the 70% of 1961. If the U.S. figures are any guide, and they should be in this period of rapid technological change, the Council's predictions may be on the low side. This means that many municipalities would find unbudgeted-for changes in the various per capita grants that most receive from their provincial overlords.

**'ULTIMATE' BIRTH-CONTROL DEVICE MAY BE CLOSE:** Scientists reported from New York last

month on a new birth control agent, one that would be used only once a month, when the woman believes she's pregnant. The research was described as preliminary, but a U.S. family planning expert said the agent may be close to the "ultimate" family planning method. The agent is one of a remarkable series of chemicals called prostaglandins, hormone-like fatty substances found widely in human and animal tissue. Prostaglandins have an incredible range of effects, and researchers say they may find medical uses in therapeutic abortion, inducement of labor and, in contrast to their birth-control potential, as a treatment of ulcers, blood-pressure problems, asthma and even nasal decongestion.

The newest report of prostaglandins came from Dr. Sultan M.M. Karim of Makerere University of Kampala, Uganda, to an international meeting on the subject held by the New York Academy of Sciences. Dr. Karim reported that prostaglandin has been given to 12 women who had missed their menstrual period for from two to seven days. The chemical is in tablet form and inserted in the vagina. It produced a normal period in 11 of the presumably pregnant women. Pregnancy was confirmed in eight of them. There have been only minor side effects, he said, and the chemical seems to leave the body after affecting the uterus. One tablet is inserted in the morning in the hospital, another four hours later, and the woman goes home.

Dr. Karim said prostaglandins offer the possibility of self-administration and may only need use at the time of a late menstrual period, statistically three of four times a year. Dr. Reimert Ravenholt, director of the office of population for the U.S. Agency for International Development, told a news conference: "This is a very historic occasion in the evolution of technology for the control of fertility." The ideal means of family planning, Dr. Ravenholt said, is a chemical rather than a mechanical device that is not toxic and acts after conception. "This is very, very close to the ultimate fertility control," he said. "It allows the woman to control fertility completely through the exercise of hindsight."

None of the scientists would say when such an agent might go on the market, if it does.

**SNEAKY PEEKS:** Recently I bought a tag from

a sturdy-legged, miniskirted young lady who said she was raising money for what I understood to be the Turn-The-Student-Out-To-Grass Fund. The tag is a sticky-backed creation which clings to any surface and bears a picture of Snoopy carrying a placard which reads: Save the Leg - Keep The Mini! I stuck the tag on the instrument panel of the car where I can ponder its message while sitting in traffic. I have now concluded that I am in accord with half the slogan. Women's legs, which can be extremely useful as well as attractive, should be saved. But I am not sure that the miniskirt is the vehicle, or garment, which will be their salvation.

The miniskirt is an overkill. It exposes too much of too many. A butcher would not see any more raw meat in a lifetime than is on display in Toronto subway cars during rush hours. The miniskirt has soured the delight of the sneaky leer. It has curbed speculative imagination. It has downgraded femininity. There used to be nothing more appealing than a woman who realized she was revealing a smidgeon too much flesh and who tugged demurely at her skirt to recover her modesty. She made a man feel devilishly privileged to have glimpsed what was very personally, privately, hers.

Last summer, my 17-year-old daughter was given a bikini by a girl friend who bought it in Nice. She put it on and came out into the garden where I was sitting and, pirouetting, asked how I liked it. I said she looked cuter than a lady bug, because she did. She was foot-stomping indignant. "Some parent! You're supposed to be scandalized!" My reaction was that she was being unreasonable. I see almost that much anatomy in downtown offices. It hangs out below miniskirts and glimmers behind peek-a-boo blouses worn by nicely matured women who are stylishly dressed for work. To me, a bikini is merely a semi-topless miniskirt. Familiarity has made it about as sexy as an antimacassar.

Today, though, I saw a girl wearing a midshirt which, like most compromises, isn't much of anything. But as I watched her sway down the street, skirt brushing her shins, hips rolling and thighs thrusting, I began to wonder what was under all that skirt. That girl probably has legs like Cyd Charisse, a figure like Raquel Welch...Whatever her proportions, they will never be as enticing as I was imagining. It made me feel young again. (W. Hicks-Toronto Globe & Mail).

## TIME WAS..

when average  
life expectancy  
was 22 yrs.



Back in the days of the  
Roman Empire, people only  
lived a short time. Today in  
the United States, life  
expectancy is 70 years!

**CITY DRUGS LTD.**

SHOPPING CENTER - LABRADOR CITY  
TELEPHONE 944-2448 or 5395



*It's got a single carburetor. A better cooling system. And softer seats for those long hunting trips to the back woods and beyond.*

**YAMAHA  
SNOWMOBILES**

First on the  
Track. First  
on the Trail.  
Snowmobiles,  
Motor Cycles,  
Outboard  
Motors, Now  
on Display at  
the: Wabush  
Yamaha Sales  
& Service.

282-6651.  
We are not  
the biggest;

but we are No. 1 IN SERVICE

# Church Calendar

# The Hospital Auxiliary

**OUR LADY OF PERPETUAL HELP**  
 Rev. F. Lemire, Rev. T. Laperriere O.M.I.  
 9:00 a.m. - Mass  
 11:00 a.m. - Mass  
 5:00 p.m. - Mass (French)  
 7:00 p.m. - Mass  
 Weekday Masses

**OUR LADY OF ASSUMPTION (WABUSH)**  
 Rev. Jos. Blouin, O.M.I.  
 10:00 a.m. - Mass  
 7:00 p.m. - Mass



## CORNER SHELVES

Here is a simple assembly of plywood and dowels that provides very attractive whatnot shelves for a room corner. Two, three, or more shelves are cut at the same time to insure identical size and shape. Drill the aligning holes while the shelves are clamped together, and when assembling, glue and brad each shelf to the dowels as illustrated. Ordinarily, 1/4-inch plywood and dowels can be used if the shelves are to hold small items, but for larger or heavier items use correspondingly heavier stock. - (Gene Von).

Weekday Masses 5:00 p.m.

**PENTECOSTAL CHURCH GLAD TIDINGS**  
 Pastor Gillett  
 11:00 a.m. - Morning Worship  
 3:00 p.m. - Sunday School  
 7:30 p.m. - Evangelistic Service  
 Tuesday, 8:00 p.m. - Prayer Meeting  
 Saturday, Young People's Meeting.

**ST. PETER'S ANGLICAN CHURCH**  
 Rev. W.J. Bellamy  
 7:15 - Evening Prayer

**CAROL UNITED CHURCH**  
 Rev. Wm. Mayberry  
 10:30 a.m. - Sunday School (Kind. - Prim. - Inter.)  
 11:30 a.m. - Morning Worship  
 11:30 a.m. - Junior & Nursery  
 7:15 p.m. - Evening Worship

**SALVATION ARMY**  
 Lieut. R. Bungay  
 11:00 a.m. - Holiness Meeting  
 2:30 p.m. - Sunday School  
 7:30 p.m. - Evangelistic Service  
 Thursday, 7:30 p.m. - Band Practice  
 8:00 p.m. - Home League

**CHRIST CHURCH (WABUSH)**  
 Rev. J.B. Dickey  
 9:45 a.m. - Church School  
 11:00 a.m. - Morning Worship  
 Serving the United, Baptist and Presbyterian families of Wabush.

**ST. PAUL'S ANGLICAN CHURCH**  
 Rev. W.J. Bellamy  
 8:00 a.m. - Holy Communion  
 10:00 a.m. - Morning Prayer

The Jackman Memorial Hospital Ladies' Auxiliary is a volunteer group of women from both Labrador City and Wabush. Their main function is to assist the Hospital financially and to aid the Administration staff in any possible way. The first fall meeting was held in the hospital cafeteria on September 28 with 40 members and guests in attendance. The business meeting was chaired by Mrs. Nita Wood and the following are a few items of general interest:

The Auxiliary purchased an apnea-monitor for the isolette infant incubator and it has already been of use in the nursery. This piece of equipment is designed to alert the nursing staff when a frail baby has stopped breathing and needs special attention.

Due to the departure of our Treasurer, Mrs. Joy Bungay was elected to this office.

The Christmas bazaar and tea will be held on Saturday, November 21 in the hospital cafeteria. Plans are now being completed for this affair under the direction of Major Johnson. This is the main fund raising effort of the Auxiliary and it is hoped all members will give of their time and talents to make it a success. Further information as to time and tickets will be announced later.

Members were asked to contact their friends, who like to knit, sew, or crochet, to join the Home Auxiliary and a prize will be given to the person with the most new members. All articles made will go towards the fund raising. Mrs. Joy Porter is the chairman of the Home Auxiliary and any interested ladies who would like free materials for projects are urged to call her at 944-2414. There is a pick-up and delivery service for both Labrador City and Wabush.

Any items of news regarding members, such as anniversaries,

**SCHOONERS Wanted. Any size, condition, location! Also sails, masts and equipment from old vessels. Anything marine bought, sold, traded. Diesel engine parts. Low prices! P.O. Box 1, St. John's.**

births, etc., are to be given to Mrs. Sue Campbell 944-2140.

The October meeting has been set aside for members to bring in any articles for the white elephant table at the bazaar. Now is a good time to clean out those drawers and closets to find any hidden treasures for the sale.

Mrs. Wood then introduced the new Hospital Administrator, Major Eleanor Johnson. Major Johnson came to us from Vancouver, B.C. where she was assistant administrator at the Grace Hospital. She has her Bachelor of Science in Nursing and a certificate in Hospital Administration. Though Major Johnson has worked in various centres across Canada, such as Winnipeg and Windsor, Ont. this is her first time East and North.

We hope it will be a pleasureable one for her. The Major gave a very enlightening talk on her aims and objectives for the hospital, several of which have already materialized. She also spoke on various projects in which the Auxiliary could become involved. Major Johnson inspired in the members a feeling that she could be looked upon for her direction and co-operation.

A social mixer and refreshments followed, during which members admired handiwork that the Home Auxiliary had completed.

The next meeting will be held on October 26. Mrs. Kay Armstrong, Public Health Nurse, will be the guest speaker.

## Home-owners' ad column

FOR SALE -- 1 Chesterfield Suite. For further information, call 944-2158 or call at 440 Centennial Drive.

FOR SALE - Pool Table about 66 inches by 36 inches; Star Finder Telescope; Cassette Tape Recorder; Heavy Duty Drapery Rod, suitable for living room; for further information phone 944-5486.

FOR SALE - 1965 Volkswagen Sedan. Phone 944-5781 after 6.00 p.m.

FOR SALE - 1967 B.S.A. "Bushman" Motorcycle. Driven 600 miles. Excellent condition. Phone 944-2359.

FOR SALE - Aluminum Boat with 10 h.p. Mercury Motor. Phone 944-2282.

FOR SALE - 1 pr. Head Skis, to 15 cm., with Nevada Bindings. 1 pr. Volk Skis, to 185 cm. with Tryolla Bindings; 1 pr. Lange Ski Boots. Size. 9 1/2 Narrow; 1 Amphicat 20 h.p. For further information, phone 944-5131.

AVAILABLE: Will baby-sit pre-school children in my own home during day time while mother's work. For further information call 944-5952.

WANTED: The Labrador City-Wabush branch of the Memorial University Alumni requires the services of a part time secretary. For information concerning duties and salary call 944-5442.

WANTED: To buy, one used washer. Must be in good condition. Please call 944-5952.

LOST: In Bowring's Furniture Department on Saturday past a considerable sum of money. Finder is asked to call 944-5771. A reward is offered.

Phone  
 282-6877  
 or  
 282-6632

## WESTLAB

FOR ALL YOUR FAVOURITE BEERS

Indis - Black Horse - Labatt 50  
 Molson's Export - Dominion  
 Blue Star - O'Keefe  
 Molson's Canadian



Home Delivery Service:  
 Monday to Saturday 1 p.m.  
 to 9 p.m.

Warehouse Pick-up Service:  
 Monday to Saturday 9 a.m.  
 to 9 p.m.

We have recently installed Cooler Service permitting us to provide our customers with chilled beer at all times.

Telephone orders taken  
 Monday to Saturday 9 a.m. to  
 9 p.m.

282-6877 or 282-6632

## OVERWEIGHT ?

Reduce the easy Slendor Reducing Plan way. Eat three satisfying meals a day. \$2.50 and -\$6.00 sizes. At City Drugs & Northern Drugs.

## SORE-MOUTH ?

Amazingly quick relief for discomfort of mouth sores, white canker spots, dental plate sores, tender gums, with Fletcher's Sore-Mouth Medicine. \$1.00 at City Drugs and Northern Drugs.

## MARITIME LIFE ASSURANCE COMPANY

HEAD OFFICE HALIFAX

The Company with "Venture Growth" the modern concept of life protection.

Resident agents in Labrador City,

**Ron Brown 944-2294**

**Phil Lozman 944-2666**

Branch Office Millbrook Shopping Centre,  
 Corner Brook, Nfld.

**W. Roberts, Branch Manager.**

# Scanning the market

By C.S. Devine

The market continues to mark-time around the "Dow 760" level. This week should bring the first of third quarter earnings, which many investors are eagerly awaiting. A reasonable profit picture over the summer months could stimulate another rally.

Canadian oil stocks have made substantial gains over recent days as the U.S. relaxed its import quotas on oil from Canada. These stocks could be in for a further boost if an energy shortage develops, as some predict, in the U.S. late this year or early 1971.

Today we again review our hypothetical Labrador First Fund. Since our review of September 9, we have made one purchase; selling 200 shares of Ranger Oils at \$12 to purchase 400 shares of Western Decalta Oils at \$6. As of September 30 our position was as follows:

COMPANY	NUMBER OF SHARES		TOTAL VALUE AS OF SEPT. 30
	HELD	VALUE	
Ranger Oils	600	\$12.50	\$ 7,500.00
Western Decalta Oils	400	6.35	2,540.00
Revenue Prop.	2,000	.70	1,400.00
Wajax Ltd.	100	9.00	900.00
Sklar Furniture	300	1.30	390.00
Northgate Explor.	33	11.75	387.75
<b>TOTAL VALUE:</b>			<b>\$13,117.75</b>
<b>DIVIDEND RECEIVED:</b>			<b>113.00</b>
<b>CASH ON HAND (After Brokerage fees of \$617.00)</b>			<b>950.00</b>
<b>TOTAL ASSETS SEPT. 30</b>			<b>\$14,180.75</b>
<b>TOTAL INVESTMENT (Jan. 1, 1970)</b>			<b>\$10,000.00</b>
<b>PROFIT YEAR TO DATE</b>			<b>\$ 4,180.75</b>

As of September 30 major indexes in the U.S. and Canada were 6-11% below their year opening figure. Our fund shows an excellent profit of 41.8%, in its nine months of operation. As you can see from the above, nearly 80% of our investment is in the fast moving Canadian oil stocks. How long we can maintain this rate of growth, we are of course, unable to say. At this writing our fund is far ahead of any mutual fund in the U.S. or Canada, in its year to date appreciation. Too bad we don't take our own advice. Although we might add, personally; during September we had our best market gain in 18 months.

**UP THE DOWN SLIDE:** Twenty-one months have passed since the start of this bear market. As bear markets go, that is a long time. It is also one of the deepest on record. A great deal of uncertainty remains, whether the market will sell off to new lows after the recent rally or in fact continue to recover gradually. There is no doubt that over the medium to longer term, renewed economic growth will bring the market once again back to good health and eventually on to record highs, but for the months ahead, the outlook is still cloudy.

What is the best advice investment counsel can offer at this time? Experienced investors know both economic and market cycles are continual, and conditions never remain fixed for long. It is well known that underlying the intermediate up and down cycles, the longer term trend has always been upward. It still is. There is really little need to ask what the next major trend will be. The only uncertainty is when a new bull market will start and how dynamic it will be.

Investors all too easily make the mistake of carrying old market favorites into new bull cycles, in the hope that "they will come back" from depressed levels. Some stock groups may not come back for a long time. Speculative conditions like those underlying the recent "performance cult" may not return for years, during which time the market may be turning its attention to an entirely different group of stocks, such as quality industrials, priced conservatively and providing competitive yields. If the investor is to have his funds skillfully invested over the near-intermediate term, in order to take advantage of the next major uptrend, he probably has to upgrade his list of holdings now, a very important and difficult task.

## Social calendar



### Will seek nomination

A second candidate has announced his intention to seek the P.C. nomination for the district of Labrador West. He is Mr. Everett J. Kearley of Churchill Falls. Mr. Kearley is presently a senior engineer with Acres-Canadian Bechtel at Churchill. He is a graduate of the Royal Military College and Nova Scotia Technical College. A Member of the Association of Professional Engineers of Nfld. and the Nfld. Land Surveyors. Former Vice-President of the Military Engineers of Canada and commanding officer 56 Field Squadron, Royal Canadian Engineers. Prior to his present appointment he was manager Fortress Engineering. Mr. Kearley, 34, was born in St. John's, Nfld. and is married to the former Marlo Winter of the same city. They have three children.

**ASHUANIPI SOCIAL CLUB:**  
 October 8 - Movie. T.B.A.  
 October 9 - Movie. Sunset Boulevard.  
 October 10 - Dancing to the music of the Chevelles.  
 October 11 - Dancing to the music of the Chevelles.  
 October 12 - Les Gants Noirs. Dance-Showband.  
 October 13 - Les Gants Noirs. Dance-Showband.  
 October 14 - Fashion Show - By Ayre's Ltd. For C. of E. ladies.

**R.C.L. NO. 47, LABRADOR CITY:**  
 October 9 - Hard Times Dance. Music by the Nite-Beats. From 9.00 p.m.  
 October 10 - Dancing to the Music of the Nite-Beats from 9.00 p.m.  
 October 11 - Mixed Darts at 1.45 p.m. Games Night at 8.30 p.m.

October 12 - Dominion Darts at 7.00 p.m.  
 October 13 - Games Night at 8.30 p.m.  
 October 14 - Movie. Bellboy, with Jerry Lewis.

**O'BRIEN HALL**  
 October 8 - Games Night at 8.30 p.m.  
 October 9 - Teen Dance Upstairs.

**K.O. Darts Downstairs.**  
 October 11 - Regular K of C. Meeting at 8.00 p.m.  
 October 14 - Dominion Darts

**R.C.L. NO. 57 LABRADOR CITY:**  
 October 10-11 - Dancing to the music of the Nfld. Showband.  
 October 14 - Games Night at 8.30 followed by dancing to the music of the Nfld. Showband.

**SIP WILFRED GRENFELL HOTEL:**  
 October 8 - Movie.  
 October 9 - Dancing to the music of a local orchestra.  
 October 10 - Dancing to the music of a local orchestra.  
 October 11-12-13 - Movies.

### NOTICE

Three weeks from the date hereof application will be made to the Newfoundland Liquor Commission for a licence to sell beers, wines and liquor at Carol Inn, a proposed hotel-motel at Labrador City.

Dated at St. John's this fifth day of October, 1970.

George Moore  
Secretary

Oct. 5, 12, 19

**THE B & J LUMBER CO. LTD.**

**BUILDING MATERIALS**  
**WABUSH INDUSTRIAL PARK**  
 Phone 282-6243-3182  
**FREE DELIVERY**  
 P.O. 1108

## A good reason for borrowing is a good reason for lending at HFC

Got a money need? See HFC. We'll understand and help... because in our 92 years we've seen... and solved... just about any kind of money problem you can imagine. When you need to borrow... to pay bills, buy a better car, take a vacation, or accomplish some other important purpose... we're glad to help. And we provide a wide choice of convenient repayment terms. Bring your money need to us today. Let us show you why, every year, more than 2½ million people borrow with confidence from Household Finance.

Apply for your loan by phone. We'll supply your loan by mail.

AMOUNT OF LOAN	MONTHLY PAYMENT PLANS					
	60 months	48 months	36 months	30 months	24 months	12 months
\$ 100	\$.....	\$.....	\$.....	\$.....	\$6.12	\$9.46
300	.....	.....	.....	.....	18.35	28.37
550	.....	.....	.....	23.73	32.86	51.24
1000	.....	.....	.....	41.45	58.11	91.56
1500	.....	.....	60.47	.....	.....	.....
2500	.....	77.16	94.48	.....	.....	.....
3000	.....	92.59	113.38	.....	.....	.....
4000	107.53	123.46	151.17	.....	.....	.....
5000	134.41	154.32	188.96	.....	.....	.....

Above payments include principal and interest and are based on prompt repayment but do not include the cost of life insurance.

**HOUSEHOLD FINANCE**

*Corporation of Canada*

**LABRADOR CITY**  
 Carol Lake Shopping Centre..... Telephone 2647  
 Ask about our evening hours

# \$ 1.37 DAY

## FRIDAY OCTOBER 9

- CARNATION MILK 7 Tins for 1.37
- LAVO 5 for 1.37
- CAMPBELL'S TOMATO SOUP 9 Tins for 1.37
- KLEENEX FACIAL TISSUES 7 for 1.37
- LIBBY'S ORANGE JUICE 6 for 1.37
- CAMPBELL'S VEGETABLE SOUP 9 for 1.37
- LADY PATRICIA HAIR SPRAY REG. 99c 2 for 1.37
- APPLE JUICE 6 Tins for 1.37
- TIDE DETERGENT 3 for 1.37
- CATSUP 5 for 1.37
- TANG ORANGE CRYSTALS 6 for 1.37 PKGS.
- JELLO ASSORTED FLAVORS 12 for 1.37
- VOGUE TOILET TISSUE 12 rolls for 1.37
- DO-IT YOURSELF KITS Reg. 2.00 1.37
- RIGHT GUARD DEODORANT REG. 99c 2 for 1.37
- KITCHEN GARBAGE BAGS 4 for 1.37

- OVEN MITTS SILICONE Reg. 88c pr. 2 for 1.37
- LADIES' PANTY HOSE 1.37
- NYLONS 2 prs. for 1.37
- GIRLS' DRESSES Assorted Colours 1.37
- MEN'S & BOYS' ASSORTED SHIRTS 1.37
- CHECKED DISH TOWELS 5 for 1.37
- ROLL BASKETS 2 for 1.37
- UMBRELLAS 1.37
- RUBAN PHENTEX Reg. 89c 2 for 1.37
- 3 pce. SAUCE PAN SET 1.37
- GLASS BAKEWEAR 1.37
- FLASHLIGHT with batteries 1.37
- LADIES' PANTIES 3 for 1.37
- GIRLS' BLOUSES Assst. Shades 1.37
- KIDDIES' NYLON JACKETS SPECIAL 1.37
- PLASTIC APRONS Pretty design 2 for 1.37
- PLASTIC DRAPES Assst. shades 1.37
- MEN'S TEE SHIRTS Sizes S.M.L. 2 for 1.37
- MEN'S BRAND NAME UNDERSHIRTS Sizes S.M.L. x L. 1.37
- ASSORTED ORNAMENTS 1.37
- TEA POT HOLDERS 1.37
- CUPS & SAUCERS 4 for 1.37
- BOTTLE CAPS Contains 1 1/2 doz. Reg. 89c 2 for 1.37
- LADIES' MINI SLIPS 1.37
- KIDDIES BRIEFS Reg. 69c 3 for 1.37
- GIRLS' JEANS Reg. 2.99 1.37
- CHAIR COVER SETS 1.37
- LADIES' SHIFT DRESSES 1.37
- MEN'S DRESS SOCKS SIZES 10-12 1.37
- APACHE SCAFFVES 1.37
- 7 PIECE SALAD BOWL SET 1.37
- PLASTIC GLOVES 4 for 1.37
- DIVIDED DISH PANS 1.37
- LONG PLAYING RECORDS 1.37
- TEE SHIRTS Assst. sizes 1.37
- GIRLS' SWEATERS 1.37
- BOYS' WHITE SHIRTS Sizes 4 - 6x 1.37
- FOAM BACK CARPET ENDS 2 for 1.37
- LADIES' SWEATERS 1.37
- MEN'S WORK SOCKS 2 prs. for 1.37
- SERVING TRAYS 1.37
- LARGE FRYING PANS 1.37
- PLASTIC SHOE BOXES 1.37
- STUDENT TRASH CANS 1.37

# AYRE'S WABUSH PLAZA

All items will be on sale at 9 a.m. and will not last all day. So SHOP EARLY.

WE RESERVE THE RIGHT TO LIMIT QUANTITIES

Mon., Tues., Wed. & Sat.  
9 a.m. to 6 p.m.  
Thurs. & Fri.  
9 a.m. to 9 p.m.