

MERIT INSURANCE COMPANY
 All Canadian Coast to Coast
 DEPENDABLE PROTECTION
 Complete Coverage
 Low Rates
 Fast Fair, Friendly Claim Service
 Our Policy is your Protection
 Labrador Representative
GORDON MANSTAN
 788 Stirling Crescent
 944-3301

AUTO **FIRE**

ARTS & CULTURE CENTRE
 ST. JOHN'S, Nfld.
 REFERENCE DIVISION

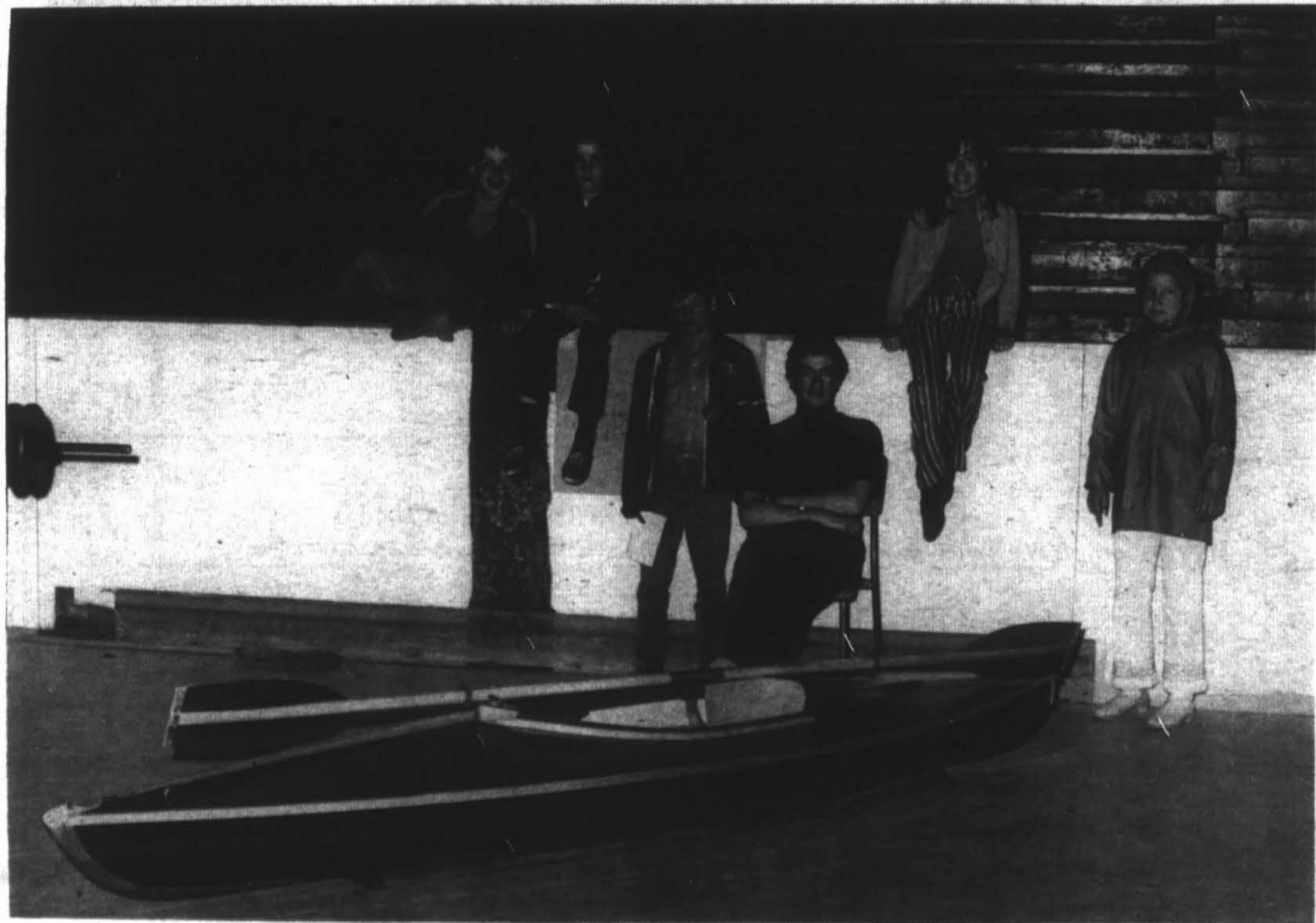
The Aurora

The weekly newspaper of Labrador West

Vol. 3, No. 27

THE AURORA, LABRADOR, SEPTEMBER 29 1971

PRICE 10 CENTS



Mr. Bill Rough (standing) announcing winners of the first Scully Mines, Safety Award Draw.

"You'll have to wait until next year."



DOMINION DEEP DISCOUNT PRICES ...by the thousands!

PRIX COUPES à Plein... par Milliers!

California-Sweet-Juicy-Delicious
SEEDLESS GRAPES lb **43^c**
 Raisins Sans Pepins-De Californie

Quebec Grown-Canada No. 1-Young-Tender
FRESH CELLO CARROTS 5 lb **48^c**
 Carottes Fraiches-Du Quebec-Sac Ce110

Prince Edward Island - Canada No. 1
ALL PURPOSE POTATOES sac 10 lb **59^c**
 Pommes de Terre-De Ile du Prince Edouard

DEEP DISCOUNT EVERY DAY
Prix coupés à Plein tous les jours!

DEEP DISCOUNT EVERY DAY
Prix coupés à Plein tous les jours!

Chocolate Drink
NESTLE'S QUIK Boite 2 lb Pkg. **99^c**
 Breuvage au Chocolat

Nescafe-6 oz Jar
INSTANT COFFEE **1.32**
 Cafe instantane-Nescafe-Pot 6 oz

Domino-Frozen-15 oz Pkg.
SLICED STRAWBERRIES **43^c**
 Fraises-Tranchees-Congelees-Domino-15 oz

Gaza-14 oz Tin
HOT CHICKEN SAUCE **22^c**
 Sauce a Hot Chicken-Gaza-Bte. 14 oz

Kam-Oblong 12 oz Tin
LUNCHEON MEAT **55^c**
 Pain de Viande Kam-Boite 15 oz

Salada Orange Pekoe
TEA BAGS 60's **79^c**
 The en Sacs-Salada-Bte de 60

Robin Hood-All Purpose-5 lb
FLOUR-FARINE **69^c**
 Tout Usage-Robin Hood-Sac 5 lb

Grand Prix-10 oz Tin
SOFT DRINKS **10^c**
 Breuvages Grand Prix-Bte 10 oz

Cordon Bleu-7 oz Tin
BONELESS CHICKEN **39^c**
 Poulet Desosse-Cordon Bleu 7oz

Mouthwash-12 oz bottle
SCOPE **1.05**
 Rince Bouche-Bout. 12 oz

Deodorizer-Super Dry-6 oz
SECRET **1.09**
 Desodorisant-Sac- Bte 6 oz

Toothpaste- Family size
CREST **1.05**
 Dentifrice-Format Familial

Tide-King Size
DETERGENT **1.89**
 Detersif Tide-Format Familial

Imported-Family Favourite-Large
BANANAS "AMIGO" lb **18^c**
 Grosses Bananes-Amigo-Importees

Quebec Grown-Canada No. 1 - Best for Boiling
SMALL ONIONS 10 lb **89^c**
 Petits Oignons-De Quebec-a Bouillir

South Africa-Juicy-Delicious-48's
OUTSPAN GRAPEFRUIT **6/99^c**
 Pamplemousses Outspan-De L'Afrique du Sud

DEEP DISCOUNT PRICES on famous DOMINION QUALITY MEAT! **Prix coupés à Plein sur la fameuse viande de qualité DOMINION!**

Canada Choice-Red Brand Beef-Country Club-Boneless
ROLLED POT ROAST lb **89^c**
 Roti Pot-au-Feu-Roule-Desosse-Country Club

Canada Choice-Red Brand Beef
BLADE ROAST tender lb **69^c**
 Roti de Palette-Boeuf de Marque Rouge

Oven Roast-Tender-Juicy
CROSS RIB ROAST lb **89^c**
 Roti de Cotes Croisees-Tendre-Juteux

Red Brand Beef-Standing
PRIME RIB ROAST lb **1.49**
 Roti de Cotes Nature de Choix

Frozen-Economical-2 lb Box
CHICKEN LEGS or BREASTS **1.29**
 Cuisses ou Poitrines de Poulets-Bte 2 lb Congelees

Maple Leaf- Smoked
COTTAGE ROLLS lb **79^c**
 Roules Cottage-Fumes-Maple Leaf

Maple Leaf Loose
SAUSAGES lb **59^c**
 Saucisses-A la livre-Maple Leaf

Fresh Ground Hourly!
HAMBURG lb **63^c**
 Fais hache chaque Heure!

Jubilee Brand-Rindless
BACON Pqt. 1 lb Pkg. **53^c**
 Bacon Sans Couenne-Marque Jubilee

Maple Leaf-Tasty-Juicy
WIENERS Pqt. 1 lb Pkg. **59^c**
 Saucisses Fumees-Maple Leaf

On the local scene

POLITICS: Labrador West was the first district in the Province to officially nominate (4) candidates for the forthcoming Provincial Election — and at this writing may (with the possible exception of St. John's Centre) — be the only district where four men will seek election. Over recent days political activity has picked-up, although it now seems the election will not be held before late October or early November.

Here is the present situation (in order of nomination) according to reports received by Aurora. Last week Peter Walsh, P.C. candidate announced that Mr. John Murphy, of Labrador City, would be his Campaign Manager. And would be assisted by (20) organizers in Labrador City, Wabush and Churchill Falls. The P.C. Campaign Manager announced all Pool Captain's had been selected and pollorganizational work would be completed shortly. Mr. Murphy also stated approximately 120 voters of Labrador West would play an active part in the upcoming campaign. Mr. Walsh spent last week-end campaigning in Churchill Falls.

Labor Minister Roy Legge, Liberal candidate for Labrador West, was also working on his organization last week. Although no official release has been made — it is understood Mr. Karl Hiscock of Labrador City, will be the Liberal Candidate's Campaign Manager.

The incumbent Mr. T. Burgess (N.L.P.) has been spending considerable time in Labrador North & South. However following the selection of a N.L.P. candidate in Labrador South, it is expected Mr. Burgess will concentrate more on this District. No announcement has been made as to Campaign Organization, but a Ladies Association was recently formed and they expect to be active during the campaign.

The fourth candidate to be nominated was Mr. Mike. Neville (N.D.P.) As we went to press, no release had been made as to campaign organization: however, meetings are scheduled for this week.

However we did suggest to the St. John's reporter, that medical services — especially dental — were of a far more pressing nature, to permanent residents here, than conditions at construction camps. C.B.C. did contact Dr. James Hearn of Wabush and he did confirm he would be leaving on vacation this week. Now where does the blame lie, for lack of such an essential service. Evidently local and provincial authorities have known since early summer, that such a situation would occur unless replacements were obtained. As Dr. Hearn stated in his radio interview, the area now requires **THREE DENTISTS** — and here we are 29 Sept. 1971, **WITHOUT ONE DENTIST.**

Aurora feels the Provincial Department of Health should set up a commission to investigate all phases of Medical Services in this area. The sooner the better. In the meantime — Take special care of your teeth.

LOCAL NOTES AT RANDOM: Stop signs have been installed on the Ski Lodge Rd., at its junction with Fermont Rd. Drivers are asked to pay particular attention — especially at night.

Work on Humber Valley's new Station is presently under way, with clearing of a transmission site, nearing completion. Understand an Altantic design home will be erected in Wabush and it will serve as quarters for the manager, as well as a studio.

The Sherren Funeral Home is progressing well and construction should soon be completed.

A new gift shop has been opened in Sir W.G. Hotel. The Grenfell Gift Shop — situated in the main lobby — is opened daily (7 days per week) from 12:00 noon to 12:00 midnight. In addition to magazines, tobacco's, etc., the store features "Grenfell" Labrador Handicrafts.

Mr. Tom. Baird, well known locally thru Sir. W.G. Hotel and Ashuanipi Social Club, has recently been appointed head bartender, Churchill Inn — according to M.C.N. Manager Mr. A. Rudkowski.

CONGRATULATIONS: Colin & Joyce Avery proudly announce the birth of a daughter, Karla Joy, born on 13 Sept. '71., at the Capt. William Jackman Memorial Hospital. Weight 5 lbs. 14 oz.

OF MEDICAL SERVICES & LIVING CONDITIONS: If tentative reservations were fulfilled, Labrador City-Wabush is now without the services of a dentist. If we might digress for a moment. In our issue of 15 Sept. we printed — from what this writer considers a reliable source — a report on conditions at a large, local construction camp. Aurora received calls from the managing agent and construction company concerned, to the effect that conditions — as stated in our story — were not correct. A health inspection had been carried out and regularly safety checks were being made. In these cases — with minor deficiencies — the camp had been given a clean bill. We received a call from C.B.C. "On The Go" last week, regarding our article and were asked to comment further. Although invited to inspect — we are still waiting for a definite date to visit these camps — and felt it not wise to add anything until we had actually seen the area.



Tamarack Golf Presentations -- made earlier in the season.




Grade ten Electoral Scholarships

The Honourable Dr. H. W. Kitchen, Minister of Education and Youth, today made the following release regarding the awarding of the Grade X Electoral Scholarships.

This year for the first time these Scholarships were awarded on the basis of a special test which was written in June. To be eligible for the Scholarship a student must be under seventeen

years of age by the first of July in the year the test was written. Students must have attended during the school year a school where provision is made for teaching all grades from 1 - XI. Not too many districts are eligible for the Grade X Electoral Scholarships as the majority of districts have high schools

operating in various communities, students from these schools write the examination for the Grade X Confederation Scholarships. Winners include. Anne Martin, Labrador South, Henry Gordon Academy Cartwright; Yvonne O'Neill, Labrador West, J. R. Smallwood Coll. Wabush.



SPECIAL:

G.M. ANTI-FREEZE.

\$2.59 GALLON.

.76 QUART.

FROM:

CITY MOTORS (LABRADOR) LTD.

944-2617

L.C.A.H.A.

ANNUAL MEETING

The Labrador City Amateur Hockey Association shall be holdings its annual meeting and election of officers on Sunday, October 3, 1971-at 2 P.M., Labrador City Arena.

Each team is urged to have its delegates in attendance.

Resolution recommended in the constitution and by-laws must be in the hands of the President, P.O. Box 579, Labrador City, not later than Wednesday, September 29, 1971.

The general public are invited to attend.

Gordon Maristan,
President L.C.A.H.A.

The Aurora

Published every Wednesday at Labrador West, Newfoundland and Labrador and printed by Robinson-Blackmore Printing and Publishing Limited, O'Leary Avenue, St. John's, Newfoundland. Subscription rate Canada and Foreign \$6.50. Mailing address, P. O. Box 2090, Labrador City.

Editorially Speaking

Earlier this year Aurora published a short review of Germaine Greer's book "The Female Eunuch." We recently read the following article by Richard J. Needham in the Toronto Globe & Mail. The editorial writer refers to Mrs. Greer's book at some length and we felt it was very interesting. Here is "before how can marriage give security?"

BY RICHARD J. NEEDHAM

If you had to give one sentence of advice to young people, what would it be? My own, as printed in this corner a week or so back, would be, "Don't even consider marriage until you're 30." One young wife and mother wrote to disagree with me—get an early start with your kids, said she—and I printed it. Many others wrote to agree. They'd have done better in marriage, they feel, if they hadn't hustled (or been hustled) into it at 19 or thereabouts.

If these ladies mean what they say, I trust they'll give all of their sons and daughters a copy of Germaine Greer's battling book, *The Female Eunuch*, in which she takes the whole institution of marriage apart—well, at any rate, the sort of marriage we have now, in which children produce more children, and nobody gets to grow up.

One big reason for it, says Germaine Greer, is the fairy-story version of marriage—the beautiful princess weds a handsome young prince and they live happily ever after. Our young people, supposedly "educated," really believe this hogwash; and those adults who have been through it themselves, who know from personal experience what hogwash it is, nonetheless perpetuate it—perhaps to get revenge? Germaine Greer says:

"The myth (of romantic marriage) has always depended upon the riches, the handsomeness, the loveliness, the considerateness of a man in a million. There are enough women prepared to boast of having got a man in a million to persuade other women that their failure to find a man rich enough, handsome enough, skilled enough as a lover, considerate enough, is a reflection of their inferior deserts or powers of attraction. Most women who have followed in the direction indicated by the myth make an act of faith that despite day-to-day difficulties they are happy, and keep on asserting it in the face of blatant contradiction by the facts, because to confess disappointment is to admit failure and abandon the effort. It never occurs to them to seek the cause of their unhappiness in the myth itself."

Another thing that lashes young people into marriage is fear—the fear of being alone, of standing alone, of being personally responsible for their words, their deeds, their fate. They want the "security" which is to be found in a "home"—not their parents' domicile, they've had that, but their own. Yet as Germaine Greer so rightly warns, there isn't and never was and never will be such a thing as security, save perhaps for the dead, save perhaps for the man serving a life term in prison.

"Women who refuse to marry are seen to be daring insecurity, facing a desolate old age, courting poverty and degradation. But husbands die, pensions are inadequate, children grow up and go away, and mothers become mothers-in-law. Women's right to possess property is curtailed, more if they are married. How can marriage provide security? In any case a husband is a possession which can be lost or stolen and the abandoned wife of 30-odd with a couple of children is far more desolate and insecure in her responsibility than an unmarried woman with or without children ever could be."

A third and very powerful pressure for early marriage comes from advertisers and manufacturers of consumer goods. It's clearly in their interest that people should marry young, should immediately (and for ever after) start buying all kinds of goods—on credit, if necessary, and it usually is necessary. It's equally in their interest that the young couple should immediately have children, thus creating brand-new (and almost insatiable) consumers. When the church bells ring, so do the cash registers.

Then again, there's what I'd call the Dick-and-Jane upbringing of kids. To them, the only possible relationship between a man and a woman is marriage, the only possible life for either of them is in a suburban home, with him going out to work and her baking cookies, having babies, etc. There's no thought among them that a woman might prefer to be a concert pianist, a man to be an explorer. If these kids have any religion, it's "togetherness."

I've written these two articles (about *The Female Eunuch*) as a man. How does a woman feel toward the book? Dazzling Dianne Budd, 18, has read it, too, and reports: "I want everyone I know to read the book; but especially the women I know. Those of us who have begun to demand this right to some sort of human pride frighten those who understand neither it nor themselves. How can I

—Here and There—

SALTFISH CORP. LEASES NFLD. PLANT:

The Newfoundland government has leased a salt fish plant in St. John's to Canadian Saltfish Corp. The government, which had underwritten \$750,000 in loan guarantees for the operation, purchased the plant from Steers Ltd. for a nominal \$1. The plant, described as "the best of its kind in Canada," will continue to cull and package salt fish and conduct experiments in fish quality and packaging.

Aiden Maloney, chairman of Saltfish Corp., says the plant will be operated by Steers Ltd., on behalf of the corporation. "We are going to move in certain directions in marketing and packaging and the plant will enable us to carry out these programs," Maloney says. Steers Ltd. and the Ross Group of England jointly embarked on a fresh fish plant and a salt fish venture in 1966. The fresh fish plant was closed in February, 1968, after only three months of operation, when the Ross Group withdrew, giving inadequate fish supplies and poor markets as the reason.

The fresh fish plant was taken over by National Sea Products Ltd., of Halifax, N.S. in November, 1970, and is scheduled to go into production sometime next year.

FEW INNOCENTS ABROAD: A survey of Italian teenage girls has revealed that most of them would like to be virgins on their wedding day, but only 40 per cent of them are. A survey of teenage boys shows that most of them disapprove of pre-marital sex—for girls. The majority of girls who had sex relations before marriage reported that such relations made them unhappy.

6,133 BIKES STOLEN: One measure of the bicycle's popularity that concerns insurance companies as well as owners is a disturbing increase in what appears to be professional thefts of the costly, multi-speed

imported racing machines.

Toronto police report 6,133 bicycles and tricycles were stolen in the first seven months this year, up 25 per cent from a year earlier. Of these 1,850 were reported in the single month of July, nearly twice the losses of last July. Most were adult bikes.

Although frantically busy with sales, some bicycle shops now are taking time to record serial numbers of each machine with the name and address of the purchaser. "Owners, themselves, often fail to note the numbers or lose their record," one harried retailer reported. A property insurance official grumbles that manufacturers should build in a thief proof lock. Police recommended securing both wheels to a post or tree with a heavy chain.

QUEBECERS: THE SUPPLY IS DWINGLING:

Quebec's birthrate continues to drop, despite a slight overall increase for the January-July period, the Provincial department of social affairs announced recently. An estimated 90,200 babies will be born in Quebec this year, down from the 1970 figure of 91,500. This marks the lowest number of Quebecers born in one year since 1943.

The marriage rate is also going down. An estimated 48,000 couples will take vows this year, as opposed to 51,500 marriages were performed. The death rate remains at a stable 41,000 annually.

LOCKING THE STABLE DOOR:

For several years a one million dollar carspraying facility has been in operation at Port aux Basques, Nfld. Its main purpose is to clean the soil of the island from vehicles going across Cabot Strait by ferryboat, so as to prevent their carrying a celebrated pest, the potato wart, from Newfoundland to the mainland. It's almost funny to learn that, at the same time, for at least two

years, vehicles have been going to the mainland from the province, via the Argentia-North Sydney route ferry service, without undergoing similar treatment. This will be rectified next year.

It sounds very much like locking the stable door after the horse is stolen. By the same token, why shouldn't all vehicles coming into Newfoundland from all over North America have to run the same gauntlet on the other side of the Gulf? There are pests over there too!

OF RUM AND LIVESTOCK:

Canada Packers Ltd. sells more than \$900 million worth of almost every other sort of food: now it also has a toe-hold in the liquor business. The company is the Ontario agent for Ron Havana Club, believed to be the first new Cuban rum making its way onto Canadian listings since those post-Castro days when the Bacardi family took its business elsewhere in the Caribbean.

The rum agency went to Canada Packers for this reason: The Cuban government let people in Ottawa known they wanted to buy Canadian Holsteins and other farm products. But the Cubans lacked the hard currency. If, they hinted to Ottawa, they could only earn some by selling rum here... Department of Agriculture officials caught the hint and passed it on to Canada Packers' international trade division. There's speculation now that Havana Club may only be the start. A pricing footnote: Havana Club sells in Ontario for \$6.25. The expatriate Bacardi rums, now that they're bottled in Canada sell at \$5.45.

MIDNIGHT SENTINELS:

Husbands who sleep nearer the bedroom door than their wives are cavemen types unconsciously going back to man's earliest beginnings in the caves. So says Dutch psychiatrist Dr. Joost Mathijson after a tour of Common Market nations. Such men want to protect their mates from wild beasts or enemies who might try to enter at night. Dr. Mathijson explains. Italians turned out to be the cavemen of the Common Market—70 per cent of the men questioned slept nearer the door.

explain to women who have never lived—never given themselves a chance to live—except through their husbands, their children, the TV and screen stars, that I refuse to make those compromises which they regard as duties; that, as Nora said, each of us have amore important duty to herself? Many have justification for their fear. Somewhere in those bungalows they have lost the 'self.'

VERY SPECIAL VALUES FOR FALL

CHILDREN'S 1 PCE. SNOW SUITS

Save on a warm cosy one piece hooded Snowsuit. Navy and green in sizes 2, 3 and 4.

\$6.97

BOY'S WINTER BOOTS

Get the young lad ready for winter now, at special prices! Sturdy overboots with buckle and strap. Black and brown in small sizes 8 to 6.

**\$2.29 -
\$3.29**

GIRLS' PARKAS

Made of brushed Nylon with fur trimmed hoods. Red and green in sizes 3 to 10.

\$7.99

INFANT'S PARKAS

Pert and warm for the wee ones. Brushed Orlon Parka in pink, yellow and blue. Sizes 12 to 18 months.

\$5.99

BOY'S FLARE CORDUROY PANTS

Just great for school or after school wear. Gold, brown and navy in sizes 8 to 16.

\$3.97

CHILDREN'S QUILTED SNOW SUITS

A super special, just at the start of Fall and Winter. Two piece Snowsuits with furry trimmed hood. Red, yellow, navy and green in sizes 4, 5 and 6.

\$8.00

GIRLS' SNOW BOOTS

Cosy pile lined Boots to wear without shoes. Black, brown, beige and red in sizes 8 to 4.

\$5.77

MEN'S STRIPED FLARES

A compliment to his wardrobe. Popular striped flare leg Pants in sizes 28 to 36. Gold, Brown and navy stripes.

\$5.97

GIRLS' SLACKS

A genuine saving on easy care Crimplene and corduroy Slacks. Navy, royal, blue, red, gold and green in sizes 7 to 14.

**\$3.49 -
\$3.97**

LADIES' KID GLOVES

What savings! Soft kid gloves lined with real fur! Black and brown.

\$3.97

LADIES' SUEDE SHOES

Step right into Fall in the latest high style Ladies shoes. Two tone Suedes. Brown only, sizes 5 to 9.

\$5.77

CHENILLE BEDSPREADS

Singles and Doubles. White, yellow, pink and green. Slightly imperfect but this will not affect wear.

\$8.97

AYRE'S BARGAIN CENTRE
WABUSH SHOPPING PLAZA.

On the labour front

UNIONS CONTEST JOBLESS PAY RULING: The Canadian Labor Congress and affiliated unions are contesting rulings denying unemployment insurance to workers laid off because of strikes by members of the same union but of another local in the plant. Laid off workers have been cut off from unemployment insurance as soon as strike benefits were paid strikers. The premise for the action is that workers who are laid off helped finance the strike through regular union dues to the parent union, which used dues money to pay benefits to strikers. The latest ruling on the issue is in a case involving office workers laid off when production employees of Sunar Industries Ltd. in Kitchener, Ont. went on strike. Both the office and production workers are members of different locals of the United Steelworkers of America.

Jean Beaudry, executive vice-president of the congress, led a delegation of union leaders in a meeting with senior officials of the Unemployment Insurance Commission recently, to complain about the interpretation of the Unemployment Insurance Act relating to labor disputes. The section disqualifies persons from unemployment insurance benefits if they participate in, finance or are directly interested in the dispute that led to the work stoppage. The key decision on with-holding benefits from workers not directly involved in a dispute, but who pay dues to the international union, goes back to January, 1970.

At the time an umpire under the act who heard an appeal from a decision by a board of referees, ruled that non-striking employees who helped build a strike fund through their dues, were financing the dispute within the meaning of the act. Eamon Park, assistant to the national director of the Steelworkers, said the reasoning of the umpire could

deny unemployment benefits to union members laid off because of a shortage of supplies from another plant, where a steel local was on strike.

Under the union's constitution, benefits are not paid until after the fourth week of a strike. Mr. Beaudry said different boards of referees under the act have placed different interpretations on the section relating to financing.

LAY-OFFS: When Massey-Ferguson Industries Ltd. of Brantford, Ont. reopened their North American combine plant—after a five week shutdown—last week, only 250 of the 750 employees were called back for the production of manure spreaders. The others will be called back at the beginning of November.

THE TREND; HOURS SHRINK, HOLIDAYS GROW: Labor bargainers are successfully whittling down the work week. This development largely has been overshadowed by the size of recent wage settlements. But at the same time, some union have:

1. Negotiated one or two additional statutory holidays a year. The traditional norm of eight is now being boosted to 10 or 11.
2. Won additional holiday time to transform the week between Christmas and New Year's Day into a vacation.
3. Shaved the work week below the 40 hours generally thought traditional.

The addition of more paid holidays have developed into a strong trend. Some contracts signed this year have added one day—Easter Monday is popular—to give 10 holidays a year. Examples include American Can

of Canada Ltd., the Kingston General Hospital and the Metal Industries Association of British Columbia (latter covers 1,700 employees.) In other contracts, a one-day increase means 11 paid holidays a year. These range from the Yukon Territory government and the Capreol Hydro-Electric Power Commission to General Foods Ltd. and Abex Industries of Canada Ltd., Longueuil, Que. General Foods employees also have two other half-day holidays.

The Christmas holiday, familiar to garment industry workers, now is coming to automobile industry people as well. Chrysler Canada Ltd.—which is looking at the four-day, 40-hour week—will give 10 continuous days off next Christmas to production workers. Kelsey-Hayes Canada Ltd., Windsor, now give 12 holiday (up one). This allows for a continuous 10 days off at Christmas.

Hours of work seem to be sliding toward 35 per week. Last year, the Federal Labor Department noted 12 large contracts (excluding construction) where hours were reduced. One of these involved a reduction from 41 to 40. All the rest involved reductions from work weeks which had been 40 hours or less. The shortest week provided in these contracts was 35 hours. The trend continues this year. For example, the New Brunswick Association of Nurses earlier this year bargained their week down to 37.5 from 40.

Employees of Vancouver Island's Regional Library Board, who now work 37.5 hours, will cut back to 35 next January. Some of the city of Kitchener's clerical workers, who put in 40 hours last year, now work 37.5 and can look forward to 35 hours next year.

One of the more inventive approaches to the shorter-hours issue was taken by the employees of British Columbia Hydro's transit systems in Victoria and Vancouver. Next month, all employees except bus drivers get a one-week pay bonus in lieu of a shorter work year. At the end of January, 1973, all employees get that bonus. In many collective agreements, there have been modest improvements in vacation provisions. Generally, employees qualify for three weeks' vacation earlier, and long-service employees get extra weeks off. The humblest gain in this area was recorded by the 700 employees of Bata Industries Ltd.'s footwear division. Those with 15 years' service had been enjoying three weeks' vacation. Now they will get three weeks plus one day.

FAST WOMAN: June Williams, 31, of Edmonton is one of the few women to be awarded a national licence to drive in sport car events. Mrs. Williams, who drives a Cortina GT, plans to enter all events on the provincial calendar and hopes to end up in the Canadian finals.

Mining News

PLAN NEW MINE: A coal mine without a single underground worker is projected for the Ukrainian Donetsk coal basin in 1976, Tass News Agency reported recently. Two powerful coalcutters will operate at the coalface from where the coal will be transported automatically to the surface, it said.

EARNINGS DROP: 1. Pine Point Mines Ltd. reports net earnings for the first half of 1971 of \$5,783,000 or \$1.28 per share, vs \$13,734,000 or \$3.04 per share for the corresponding period of 1970. Lower earnings were due to lower metal prices (3c for lead and slightly lower for zinc), the 6 per cent increase in the C\$ and lower grade milled said President J. H. Salter. Despite the treatment of slightly more ore (2,060,844 tons), ore grades were lower — 2.6 per cent lead vs (3.2 per cent) and 6.3 per cent zinc vs (7.7 per cent).

2. Brinco Ltd. reports a net loss of \$646,000 for the first half, as against net income of \$1,135,000 for the same period last year. Sales totalled \$1,641,000 compared with \$3,657,000 and investment income of \$249,000 versus \$284,000. Equity in net earnings of an unconsolidated subsidiary was \$143,000 compared with \$140,000. The Montreal-based company is engaged in exploring and developing the natural resources of Newfoundland and Labrador, particularly water power.

Brinco says the loss in the latest period reflects reduced sales of copper concentrates and lower copper prices, together with lower grade ore treated and a one-month strike at the company's Whales Back mine in Newfoundland. British Newfoundland Exploration Ltd. (Brinex), a Brinco subsidiary, has entered into a joint venture with Bethlehem Steel Corp. for "an intensive investigation of base metal showings within a 300-square-mile region of Labrador centered on Seal Lake."

TAX REFORMS TERMED INCENTIVE TO MINING: Ottawa's tax reform proposals will serve to maintain vigorous expanding and competitive mining, oil and natural gas industries while at the same time increasing the direct benefits to Canada as a whole, according to Energy Mines and Resources Minister J. J. Greene. The minister said the role and importance of the metals, oil and gas industries is widely underestimated. At least, their impact is of the order of 20 per cent of the country's gross national product.

"The benefits to the mineral industry proposed in the tax bill will go far toward providing a tax climate which will attract the necessary investment for growth in the mineral sector," he said. At the same time, various of the measures will stimulate Canadian ownership and control, and expansion into Canada's Arctic and offshore frontiers, lending substance to Canada's claims of territorial sovereignty. "The proposed graduated reduction in the general federal corporation tax rate to 46 per cent by 1976 will be further reduced through the abatement to the provinces of 25 percentage points of tax derived from the profits of mining companies — an increase of 15 points.

"The full deduction of exploration and development expenses, accelerated depreciation on initial assets and the provisions for earning a depletion allowance, combine to produce a significant incentive to investment in the mining industry. They place the industry on a competitive standing, compared with other countries, when such factors as productivity and political stability are taken into account. The adoption of the expanded dividend tax credit scheme, rather than the complex white paper plan for integration of corporate and shareholder incomes, will also encourage investment in minerals on the same basis as other industries. And it will not act to reduce the incentives specifically aimed at the industry.

"Additional financial resources may be attracted to the mineral industry through the encouragement given to companies whose principal business is not mining or petroleum, to become involved in prospecting and exploration ventures." The limitation of foreign investment by pension plans may encourage their managers to invest more fully in the mineral industry. And the full deductibility of interest on capital borrowed to finance acquisitions should improve the ability of Canadian mineral and petroleum firms to compete with foreign concerns. Other measures will encourage more domestic processing of mineral products. The continuation of certain incentives to prospectors should help ensure a continuation of aggressive exploration.

"The replacement of the three-year exemption from income taxes for new mines at the end of 1973 and the automatic depletion deduction at the end of 1976 by special accelerated depreciation measures and earned depletion provisions, are major changes with philosophical ramifications. In my view, these specific changes have meant a clear recognition of the importance of this sector to the economy and the appreciation by the Government of the need for further incentive." Mr. Greene said the tax proposals for the mining and petroleum industries reflect the risks involved in such ventures. At the same time, they reflect the Government's awareness of the international competition for capital, world market conditions and the incentives available in other countries.

The proposals also provide a five-year period in which the companies may plan and adjust. And profitable ventures will bear a fair share of taxation under the new scheme. This action shows an awareness within Government that nearly 20 per cent of the Canadian labor force is directly and indirectly dependent on the mineral and petroleum industries, he said.

SUBSTITUTE TEACHERS

QUALIFIED TEACHERS WHO ARE INTERESTED IN TEACHING ON A SUBSTITUTE BASES IN WABUSH OR LABRADOR CITY SHOULD CONTACT THE SCHOOL BOARD OFFICE AT WABUSH.

PHONE — 282-6722

THIS APPLIES TO THE FOLLOWING SCHOOLS:

A.P. LOW ELEMENTARY LABRADOR CITY
C.E. McMANUS PRIMARY

J.R. SMALLWOOD COLLEGIATE—
INTEGRATED SECTION— WABUSH

Legal Card

DAVID B. SPARKES
Lawyer - Advocate
Shopping Centre Mall

OFFICE HOURS: — 9 to 12 and 1:00 to 5:00
Telephone 944 - 5948 (Residence).
944 - 5555 (Office).

SEPTEMBER SALE

CLOTHING BARGAINS FOR ALL THE FAMILY

A LARGE SELECTION OF LADIES' & GIRLS' WINTER BOOTS REDUCED TO CLEAR

MENS SHORT SLEEVE **KNIT SHIRTS** ASST. SIZES AVAILABLE IN POPULAR COLORS
REG. \$4.00 SALE **\$2.66**

LABRADOR CITY CRESTED **JACKETS** UNLINED
REG. \$19.98 SALE **\$15.66**

PRETTY POLLY **PANTIE HOSE**
REG. \$2.00 SALE **\$1.33**

GIRLS **TIGHTS**
SIZES TO FIT 6-18 mths. & 10-14 yrs.
REG. \$1.79 - \$2.29 SALE **99c**

LADIES COTTON KNIT **FASHION SKIRTS**
REG. \$12-14.00 SALE **\$4.44**

INFANT **T SHIRTS**
REG. \$1.59 SALE **99c**

A COLLECTION OF INFANT **JUMPSUITS-DRESSES-SUITS & SETS**
REG. \$2.99 - \$10.00

SALE **\$1.99**

GIRLS COTTON **BRIEFS**
SIZES 7-14
REG. 60c SALE **29c**

YOUNG MENS STRIPED **CASUAL PANTS**
REG. \$8.98 SALE **\$5.55**

MENS **CASUAL PANTS** LARGE SIZES
REG. \$9.98 SALE **\$3.33**

TAM O SHANTER TEENS **T SHIRTS**
SIZES 7-14
REG. \$3.50 - \$5.00 SALE **\$1.99**

GIRLS PRINTED COTTON **SLACKS**
SIZES 7-14
REG. \$3.98 - \$6.00 SALE **\$2.88**

500 POPULAR **L.P.'s**
REG. \$5.29 SALE **\$1.47**

GIRLS **CO-ORDINATES**
REG. \$5.00 - \$6.00 SALE **\$2.99**

LADIES **HOT PANTS**
SIZES 7-13
REG. \$5.00 - \$7.50 SALE **\$1.99**

MENS THERMAL **SHIRTS**
REG. \$2.50 SALE **\$1.44**

LADIES BIB FRONT **HOT PANTS**
SIZES 7-15
REG. \$12.00 - \$14.00 SALE **\$3.99**

LADIES **RAINCOATS**
SIZES 10-16
REG. \$25.00 SALE **\$6.99**

BOYS THERMAL **SHIRTS & DRAWERS**
REG. \$1.98 SALE **99c**

LADIES **JEANS**
SIZES 7-15
REG. \$7.00 - \$9.95 SALE **\$3.33**

TEEN SPACE DYE **SWEATERS**
SIZES 7-14
REG. \$5.50 SALE **\$3.99**

PENMAN'S 71 MEN'S LONG COMBINATIONS
REG. \$5.95 SALE **\$3.00**

AN ASSORTMENT OF **LADIES SLACKS & SKIRTS**
REG. \$6.00 - \$20.00 SALE **\$3.33**

BOYS **T-SHIRTS**
SIZES 4-6x
REG. \$1.69 - \$3.59 SALE **99c**

BOYS COTTON DRESSING **GOWNS** SIZE 4-6x
REG. \$4.00 SALE **\$1.99**

LADIES TWIN KNIT **HOSIERY**
REG. \$1.00 SALE **25c**

LADIES CAN-CAN **PANTIE HOSE**
REG. \$1.50 SALE **\$1.00**

PLUS MANY OTHER UNANNOUNCED SPECIALS

the  **AT:**

LABRADOR CITY



MEMORIAL UNIVERSITY OF NEWFOUNDLAND

EXTENSION SERVICE

EVENING CLASSES 1971 - 1972

REGISTRATION:

Main lobby of Labrador City Collegiate 7 p.m. - 10 p.m. Mon. Oct. 4
Main lobby of J.R. Smallwood Collegiate 7 p.m. - 10 p.m. Tues. Oct. 5

Fees are as specified and must be paid during registration. Classes will begin the week beginning Monday, October 11, 1971.

INSCRIPTION:

Foyer du Collegiate le 4 Octobre, 7h a 10h du soir.
Les frais d'inscription specifies doivent etre payes a l'inscription.
Les classes commenceront le semaine du 11 Octobre.

COURSES OFFERED IN LABRADOR CITY: *

CONVERSATIONAL ENGLISH 1 Oct. 12 8-10 p.m. - 20 sessions - \$25.

COURS DEBUTANT D'ANGLAIS Commencement 11 Octobre 8h - 10h du soir. 20 sessions - prix \$25.

CONVERSATIONAL FRENCH 1 Oct. 12 8 - 10 p.m. 20 sessions - \$25.

CONVERSATIONAL FRENCH 11 Oct. 11 8 - 10 p.m. 20 sessions - \$25.

SEWING Oct. 13 8 - 10 p.m. 20 sessions - \$25. Course will include choosing patterns, choosing fabrics, basic and advanced sewing skills, care of sewing machine, etc.

PREHISTORIC CULTURE OF LABRADOR Oct. 12 8 - 10 p.m. 20 sessions - \$25. (With illustration and slides).
1. Development of prehistoric cultures in Labrador; Maritime, Archaic, Pre-Dorset and Thule.
2. Visual introduction to archaeological technique and field training.

* ALL COURSES WILL BE OFFERED AT LABRADOR CITY COLLEGIATE

COURSES OFFERED IN WABUSH: *

SEWING Oct. 13 8-10 p.m. 20 sessions - \$25. This course will include choosing patterns, choosing fabrics, basic and advanced sewing skills, care of sewing machine, etc.

CONVERSATIONAL FRENCH 1 Oct. 12 8 - 10 p.m. 20 sessions - \$25.

* ALL COURSES WILL BE OFFERED AT J.R. SMALLWOOD COLLEGIATE.

NOTE: The extension Department reserves the right to withdraw courses which do not receive sufficient applicants.

All enquiries pertaining to extension courses should be directed to A.D. Wright - phone 5828, Labrador City.

IS THERE A PARTICULAR COURSE WHICH YOU WOULD LIKE TO SEE OFFERED IN LABRADOR CITY OR WABUSH? PLEASE FILL IN THE FOLLOWING FORM AND MAIL TO THE FOLLOWING ADDRESS:

A.D. WRIGHT P.O. BOX 1582 LABRADOR CITY.

NAME: _____
ADDRESS: _____
PHONE NO: _____
PROPOSED COURSE: _____

Roaming The Globe

IN EUROPE, TRY A DAY ON THE RHINE: Every Canadian visitor in Europe, and there are more of us these days, needs a bit of relaxation after hard-driving trips. One answer is to take a day-long trip on the Rhine. If the sun is out, you can stretch out on a deck chair and just let miles of forest, terraced vineyards, ancient castles and quaint riverside towns unfold before your eyes. Even if it's raining, large windows in the boat lounges permit an excellent view.

The Rhine is one of the great routes of Europe, navigable by giant barges and ocean-going vessels for at least 500 miles of its 820-mile length. The barges are colorful sights. Some captains travel with their families, so the barges plow past the cruise ship with laundry flying on a line and children playing in chicken-wire compounds on the deck. There are extensive Rhine cruises, running three-seven days and starting or ending at any of several cities between Rotterdam on the coast and Basle in Switzerland. But one of the shorter jaunts may be more to your liking.

Fitting a Rhine cruise into a German itinerary is easy, particularly if you are planning to see Frankfurt and are then going on to Bonn, Cologne, Dusseldorf or Berlin. Moving in this direction, you sail downstream and it takes less time to cover the distance. Take a taxi or bus from Frankfurt to Mainz in time to board the steamer at 8:45 a.m. From the downtown area, it will take about 40 minutes.

What time of year can you go? From early April to late October. The stretch of the river between the old Roman settlements at Mainz and Cologne is called the Romantic Rhine. Here, you see three of the main features of the legend-laden river - - - the famous gorge with its old castles and the rock of the Lorelei, the huge rift valley stretching southward from Mainz, and the great plain of Northern Germany. But there is more to the Rhine than scenery, especially if a few glasses of Moselle or Rhine wine from the lounge bar stir your memories of history. Undoubtedly, the Rhine is one of the world's most historic rivers. To a greater extent than most, it flows through time as well as space.

It was the northern boundary of the Roman Empire and in every century since the birth of Christ, men have fought for possession of its banks. However, the only obvious signs of warfare now are the bare bastions of the bridge at Remagen, just north of Koblenz. It was knocked out by a German bomber shortly after U.S. troops surged across under General Patton in March, 1945.

The castles, of course, have been rebuilt or are partly restored. Today, they serve as private homes, museums or youth hostels. Their original purpose when built by the feudal overlords in the Middle Ages was

(Continued on page 12)

The Lighter Side

DECISIONS, DECISIONS! The Persian potentate, a young man in his early twenties, was presented with 100 concubines as a birthday present from his father. Noticing the young man's obvious confusion over the gift the father asked, "Don't you know what to do with 100 concubines?" "Oh, its not that I don't know what to do," he replied. "The fact is, I don't know where to begin!"

PRYING Husband: "Another new outfit! Where on earth do you think I'll get the money from?"
Wife: "Whatever my faults, dear, I'm not inquisitive."

NOT TOO VIRILE: An old man was marrying a young beauty. So he went to his doctor for medical advice on how he could perform his martial duties and to learn how often the medico thought he should fulfill his martial role.
Later, he met a friend and asked, "I don't understand these fancy words. How often a week is semi-annual?"

GOOD IN PRACTICE: Two friends arrived at the country club for a morning round of golf. The first one stepped up to the tee, took a mighty swing, and made a startling hole in one.
The second man, glancing at his buddy's achievement, stepped up to his ball and said: "All rightee! Now, I'll take MY practice swing and then we'll start the game."

PERSISTANCE: "It was terrible, mother," complained the curvy teen-ager, "I had to change my seat four times at the movies."
"Some man started bothering you?" asked mother.
"Yes," said the girl. "Finally."

DISGUISE: Vet: "It will ruin this dog's looks if I cut off his tail. Why do you insist on it?"
Man: "My mother-in-law will be visiting us soon and I want to eliminate any possible sign of welcome."

NO POKER FOR HIM: a cowboy rode into town on his favorite pinto mare and reined up to watch a poker game in progress on the porch of the liquor and grocery emporium.
One of the players looked up and asked, "Like a little stud?"
The mare answered, "Sure! Where is he?"

THE STORY TELLER: The young salesman knocked at his first door and it was opened by a luscious brunette in a bathrobe.
"Er, oh-I represent the Cameo Knitting Mills, I stuttered bashfully. "Would you be interested in some coarse yarns?"
"Gosh yes," said the brunette. "Come on in and tell me a few."

THE COMPLIMENT: "Surely," the marriage counselor insisted, "you must have said something to help start the argument."
"Not really," the husband replied. "My wife had tried a new recipe for dinner. When she asked how I liked it, all I said was, "It's okay, but it will never take the place of food."

NO PROBLEMS: The office beauty was regaling her bored companions with the tale of her adventures on the previous night. "This feller," she said, "took me up to his apartment and showed me a closet that contained at least fifteen absolutely perfect mink coats. And what do you know," she said, "he gave me one of them."
"What did you have to do?" asked the skeptic in the audience.
"Just shorten the sleeves," she said.

FROM A LONDON ENG. PAPER: Recently a famous writer had a pen name, an unlisted phone, a cable address and a Swiss bank account. When he died they couldn't find him to bury him.

ADVANCED PLANS: B. I got a wonderful idea! Why don't you come up to my apartment; we'll have a quiet littl' supper by candlelight; play a few records; then around midnight we'll open a bottle of champagne and toast the New Year!
G. But the New Year is over three months away.
B. You don't have to leave early, do you?

BRAND NAME: The woman spent several minutes looking at the thermometers in a drug store. Finally, she picked out one.
"I'll take this Fahrenheit one," she told the clerk. "I know it's a good brand."

NOTICE BOWRINGS INSURANCE OFFICE

Is now located in office previously
occupied by Dr. Obrzcova.

(Upstairs over Woolworth's).

Labrador TV

WEDNESDAY, SEPTEMBER 29

- 2:30 — Did You Know
- 3:00 — Sesame St.
- 4:00 — Take 30
- 4:30 — Edge of Night
- 5:00 — Paul Bernard
- 5:30 — Birdman
- 6:00 — Bobino
- 6:30 — Boite a Surprises
- 7:00 — Video I
- 7:30 — Here and Now
- 8:00 — Fill
- 8:30 — Singalong Jubilee
- 9:00 — Klahanie
- 9:30 — Varietè
- 10:00 — Rue des Pignons
- 10:30 — Alfred Hitchcock
- 11:30 — News
- 11:50 — Dan August

THURSDAY, SEPTEMBER 30

- 2:30 — Did You Know
- 3:00 — Sesame St.
- 4:00 — Take 30
- 4:30 — Edge of Night
- 5:00 — Paul Bernard
- 5:30 — Drop-In
- 6:00 — Bobino
- 6:30 — Boite a Surprises
- 7:00 — Abbott & Costello
- 7:30 — To Rome With Love
- 8:00 — Getting Together
- 8:30 — O'Hara, U.S. Treasury Agent
- 9:30 — Mont-Joye
- 10:00 — Dossiers
- 10:30 — That's Me Over There
- 11:00 — Encounter
- 11:30 — To See Ourselves
- 12:00 — News
- 12:20 — Movie

FRIDAY, OCTOBER 1

- 2:30 — Pot Luck
- 3:00 — Sesame St.
- 4:00 — Take 30
- 4:30 — Edge of Night
- 5:00 — Paul Bernard
- 5:30 — Drop-In
- 6:00 — Bobino
- 6:30 — Boite a Surprises
- 7:00 — Hi Diddle Day
- 7:30 — Sports Showcase
- 8:00 — TBA
- 8:30 — Donald Lautrec
- 9:00 — Consommateurs Avertis
- 9:30 — Laugh-In
- 10:30 — Tommy Hunter
- 11:30 — News
- 11:50 — Movie

SATURDAY, OCTOBER 2

- 3:30 — Hockey
- 6:00 — Countrytime

- 6:30 — Bugs Bunny
- 7:30 — Camera Moto
- 8:00 — Replay
- 8:30 — Update
- 9:00 — Montreal Variety
- 9:30 — Chapparral
- 10:30 — The Entertainers
- 11:00 — News Digest
- 11:30 — Au Masculin
- 12:00 — Cinema

SUNDAY, OCTOBER 3

- 3:30 — Skippy
- 4:00 — Tween Set
- 4:30 — Me and Friends
- 5:00 — Tarzan
- 6:00 — Tour de Terre
- 6:30 — Walt Disney
- 7:30 — Quelle Famille
- 8:00 — La Fleche du Temps
- 8:30 — Flip Wilson
- 9:30 — Sunday at Nine
- 10:30 — Week-end
- 11:30 — Here and Now
- 12:00 — News
- 12:20 — Movie

MONDAY, OCTOBER 4

- 2:30 — Did You Know
- 3:00 — Sesame St.
- 4:00 — Take 30
- 4:30 — Edge of Night
- 5:00 — Paul Bernard
- 5:30 — Drop-In
- 6:00 — Bobino
- 6:30 — Boite a Surprises
- 7:00 — Mr. Wizard
- 7:30 — Land and Sea
- 8:00 — Reach for the Top
- 8:30 — Irish Rovers
- 9:00 — A la Seconde
- 9:30 — Paradis Terrestre
- 10:00 — Cannon
- 11:00 — Front Page Challenge
- 11:30 — News
- 11:50 — Hawaii 5-O

TUESDAY, OCTOBER 5

- 2:30 — Did You Know
- 3:00 — Sesame St.
- 4:00 — Take 30
- 4:30 — Edge of Night
- 5:00 — Paul Bernard
- 5:30 — Drop-In
- 6:00 — Bobino
- 6:30 — Boite a Surprises
- 7:00 — H.R. Pufnustuf
- 7:30 — All Around the Circle
- 8:00 — Mary Tyler Moore
- 8:30 — Death of a Legend
- 9:30 — Prenez le Volant
- 10:00 — Le Monde de Marcel Dube
- 10:30 — Tuesday Night
- 11:30 — News
- 11:50 — Outer Limits



GOIN'DOWN THE ROAD— Doug McGrath (Peter) and Paul Bradley (Joey) play the leading roles in CBC Television's two-hour presentation of the award-winning film, Saturday, Oct. 9 at 8 P.M. Produced on a shoestring budget by Toronto filmmaker Don Shebib, it deals with the arrival of two hopeful maritimers in Toronto, and the bitter realities they must face. Pierre LaRoche, Cayle Chernin and Nicole Morin are also starred.



Church Calendar

BAHA'I FAITH

Focus on a New World Order
Every Tuesday 8:00 p.m.
Labrador City Area.

La Foi Baha'ie.

Plains Feux Sur Le Nouvel
Order

Mondial Tous Les Mardi a 8:00
p.m. a L'Arene de Labrador City.

CAROL UNITED CHURCH

10:30 a.m. Sunday School
(King. Prim. Inter.)
11:00 a.m. Morning Worship.

ST. PAUL'S ANGLICAN

10:00 a.m. Holy Eucharist
7:15 p.m. Evening Prayer

ST. PETER'S ANGLICAN

8:00 a.m. Holy Communion
11:30 a.m. Morning Prayer

SALVATION ARMY

Capt. R. Bungay

11:00 a.m. Holiness Meeting.
2:30 p.m. Sunday School.
7:30 p.m. Evangelistic Service.
Nursery During 11:00 Service.
Monday, 6:30 p.m. Band
Practice, Y.P.

Wed. 7:30 p.m. Corps cadets.
Thurs. 7:30 p.m. Band Prac-
tice.

8:00 p.m. Home League.
Sat. 7:00 p.m. Youth Group.

CHRIST CHURCH (WABUSH)

Rev. J.B. Dickey

9:45 a.m. Church School.
11:00 a.m. Morning Worship.
Nursery Held during Worship.

OUR LADY OF PERPETUAL HELP

Rev. F. Lemire

7:00 p.m. Mass Sat. Evening.
9:00 a.m. Mass.
11:00 a.m. Mass. 5:00 p.m.
(French)
7:00 p.m. Mass
Weekday Masses 7:00 p.m.

OUR LADY OF ASSUMPTION (WABUSH)

Rev. Jos. Blouin, O.J.I.

10:00 a.m. Mass.
7:00 p.m. Mass.
Weekday Masses 5:00 p.m.

PENTECOSTAL CHURCH

11:00 a.m. Morning Worship.
3:00 Sunday School (All ages)
7:00 p.m. Evangelistic Service.
Tues. 8:00 p.m. Prayer
Meeting.
Wed. 7:30 p.m. Choir Practice.
Thurs. Young People's Meeting
8:00.

The ice-sport season

is approaching ...

shown here are some

members of the

Polaris Figure Skating

Club

Roaming the Globe

(Continued from page 8)
 warfare and extortion. Castles—there are still about 40—were built at advantageous spots on the Rhine gorge so the nobles could level tolls on the traffic along this important trade route. Over the centuries, the castles had to withstand many sieges through four main periods of destruction. The first came in the 13th century, when Rudolf of Habsburg conquered many of the riverside strongholds. The

second came in the Thirty Years War of the 17th century; the third when Louis XIV of France gained sovereignty over Alsace-Lorraine and sent an army into the Rhine valley.

As the cruise ship begins the voyage down river from Mainz, the city's skyline is the first interesting view, blocked by the Taunus Mountains, turns and flows almost directly west. Here, you also see the northern end of a great rift valley, extending 180 miles to the south, with the Black Forest on the east bank and the Vosges mountains on the west. Scenery here is not as spectacular as it is further along the gorge, but it is wonderfully pleasant and tranquil. Terraced vineyards and small towns and villages run back from the river bank, and some of the waterfront architecture is quite medieval. This district is known as the Rhinegaa and from the vineyards come some of the finest Rhine wines.

Each kilometer along the river is marked on a signboard or on a convenient wall. Aboard ship, you can buy a panoramic map that identifies most landmarks. The gorge begins at Bingen, where the Nahe River joins the Rhine and the great stream turns north again. In quick succession, you see a national monument (the Neiderwald-Denkmal) and Ehrenfels Castle on the right bank, and the Mouse Tower on an island near the left bank. From

this point on there is a castle at every bend in the river—sometimes two or three. The gorge ends just south of Bonn. Here, the river enters a broad and fertile valley, the beginning of the great northern plain which stretches to the North Sea. The scenery has become slightly mundane but there are only 20 kilometers to go and the waterfronts of Bonn and Cologne make an impressive end to the day's voyage. Sailing past Bonn, you see the complex of government buildings erected after the then-chancellor, Konrad Adenauer, decided to make the birthplace of Beethoven into the capital of West Germany. You reach Cologne at 5:15 p.m. and your journey ends with still another romantic vista—the spires of the great Gothic Cathedral, for which the city is famous, soaring majestically into the sky.

TRAVEL THE WORLD'S TOP BUSINESS: Tourism remains the world's largest industry. A new survey reported by the American Automobile Association shows a record number of 167 million travellers last year spent an all-time high of \$14,500 million. This is an increase of 19 per cent in numbers and 11 per cent in expenditures over 1969. Increases the year before were 20 per cent in growth in numbers and 12 per cent hike in receipts.

Daily Light

By D.R. Parsons

Be thou strong habitation, whereunto I may continually resort: thou hast given commandment to save me; for thou art my rock and my fortress.

Psalm 71:3.

There are at least seventeen instances in the Psalter where the weary soul cries out to God who is his "Rock" (in the sense of a protecting fortress). The hungry soul reading this will find it to be needlessly repetitious, there are many times when burdened with the cares and responsibilities of life that we need to feel the assurance of our Rock and our Fortress!

Even in a physical and material sense, I get a feeling of warmth of safety, of something strong abiding when I see a house built upon a rock. One sees many such houses on the seacoast and in the mountains. They somehow look as though they are there forever; they seem to say: "Here we offer warmth, safety and protection from the elements."

When the storm clouds descend, "I lift up my eyes unto the hills" and see there a Rock, a Fortress which is

always in readiness for me. When I flee for refuge to His infinite mercy, I get the feeling once expressed by Charles H. Spurgeon: "Destruction cannot destroy us; famine cannot starve us;" but we laugh at both, while God's mandate shields us." This is the rich heritage of the believer, he owns a place of retreat, a "home in the country!" This hiding place in the Rock is never "winterized" (in the sense of being boarded up), it is always stocked with food, and always in readiness with the fire of God's love blazing from the hearth.

One trouble with this picture is that we can bring no guests into such a lovely place! But the wonder of it all is that we who possess such a Rock can instruct those who do not as to the proper procedure in obtaining one. Each soul is given his very own Rock by God's unmerited favor through simple faith in the Lord Jesus Christ. "Believe on the Lord Jesus Christ, and thou shalt be saved." By simple faith in God's provision, you who were alienated become reconciled through the gift of His Son. You become a joint heir with Christ; you receive title to your own place of refuge.

DON'T BELIEVE IT: A ventriloquist was entertaining at a country fair, and the country folk were amazed at this act. He threw his voice into the mouths of various farm animals and made them utter wisecracks and sharp comments. One of the farmers sidled up to him and inquired in a whisper, "Can you make all those animals talk?" "Yes," replied the ventriloquist, "I can make all of them talk." Well," whispered the farmer, "if that sheep on the end says anything about me, it's a dirty lie!"

DIDN'T OBEY: At a road construction site, a sign read: "Road closed—Do Not Enter." The other side proclaimed: "Welcome Back, Stupid!"

**"KRYSTALS"
 FAREWELL DANCE
 SIR WILFRED GRENFELL HOTEL
 SATURDAY 2 OCT. 1971.
 RESIDENTS OF LABRADOR CITY—
 WABUSH COME OUT AND SEE.**



**RAY, ROLLIE, LLOYD, AND STAN.
 IN THEIR FINAL GROUP
 APPEARANCE**

DEPEND ON

CITY DRUGS

for Your Drug Needs

Aids for a Speedy Recovery

Illness at home? A few little do-gooders — the right sickroom aids — go a long way in keeping patients comfortable, making care easier. See us for sickroom supplies.

CALL 944-5395

CAROL SHOPPING CENTRE, LABRADOR CITY

Home owners' ad column

FOR SALE: 1969 Pontiac "Firebird": Auto. Trans., Bucket Seats, P.S., Low Mileage, Heavy Duty Suspension. (8) Track Stereo & Radio. Slant six with overhead cam. Call, 944-2328.

FOR SALE: (1) Fleetwood, Stereo AM-BC, Radio-Phono. In excellent condition. Phone 944-2960, after 5:00 p.m.

FOR SALE: (1) Westinghouse Fridge. (1) Westinghouse Stove. In good condition. Please call 282-6626.

FOR SALE: (1) Telephone Table. In good condition. Phone 282-3218.

FOR SALE: 1965 Chev. Apply to 748 Stirling Cres. or Phone 944-3382, after 6:00 p.m.

FOR SALE: 1969 Volvo "1225". Call 944-3198.

FOR SALE: Sony quadradial stereo Tape Deck, \$500.00. Skis, Ski Boots (size 10), Poles, \$30.00. Phillips Car Radio \$40.00. Sony stereo Tape Recorder, TC-200, \$50.00. G.E. Stereo Record

Player \$100.00. Musical Instruments: Italian Made "Welson" Guitar, \$80.00. Epiphone "Emperor" Bass Amplifier, \$150.00. Silvertone Bass Guitar, \$30.00. Dynachord Echo Unit, \$125.00. For further information on these items, call Stan Erbrink at 944-5652, between 6:00 - 8:00 p.m.

FOR SALE: Brownie Uniform size 8 or 9 years.....\$5.00 Girl's rubber boots, black with red trim, size 1\$1.00 Girl's brown snow boots, size 2 \$1.00 Girl's red patten strap shoes, size 12 \$5.00. Phone 944-2998.

FOR SALE: Heathkit Stereo-System, consisting of the following equipment: (1) All Transistor AC-FM stereo tuner. (1) Matching 66 watt Transistor Stereo Amplifier. (2) Heathkit compact 2-way, acoustic suspense systems w 1 electrovoice Speaker. (1) Dual 10uy, 3-speed auto-professional turntable complete with base & dust cover. Above was hand assembled and is in top condition. Original Value \$1,200.00. Selling for best offer. Phone 944-3106 between 5:00 and 6:00 p.m.

WANTED: To rent: An apartment in Labrador City, by newly married couple, with no children. Please phone 944-3121.

WANTED: To buy: A House Trailer. Phone 944-3279.

WANTED: To rent: A basement apartment in Labrador City or Wabush. Or live with another couple. Young couple with (2) babies - 1 month and 14 month's old. call, 944-2274.

WANTED: Tutor for Grade 6 math. Phone 944-2998.

WANTED: Set of Grade 7 text books. Phone 944-2998.

AVAILABLE: Room & Board. Transportation paid to cafeteria. Phone 944-2700.

Attention stamp collectors Persons interested in the exchange of Canadian and Newfoundland stamps for variety of French stamps (used & unused): (Please phone 944-5849 Saturday morning or Sunday.

AVAILABLE: Tinkerbell Nursery School. Opening Oct. 1st. 1971, (Mon. Wed.-Fri.) in St. Paul's Anglican & Carol United Church. For children 3-5 yrs. For further information, call Mrs. Watson at 944-5708.

WANTED: Medium size deep freeze in good condition. Phone: 944-5856

ENGLISH GIRL BARBER GOES TOPLESS: Peter Kendrick's competitors are in a lather about what is going on --- or more correctly coming off --- at his trendy barbershop. They are complaining about Kendrick's assistant, Sharon Ponsford, being topless on the job. "This is dragging the business down in the dirt," said Bill Woolly, chairman of the local chapter of the National Hairdressers Association. As for the 39-24-39 Miss Ponsford, she said: "None of the customers have remarked on it, although a few have looked twice to make sure they're not seeing things."

CLOSET LIGHTING: A U.S. company has introduced a battery-operated lighting fixture. It eliminates installing expensive electrical wiring in little used areas such as attics, under stairs, closets, sheds. The wireless fixture, which screws to a wall or ceiling, uses two batteries. It is also handy as backup lighting in critical areas in case regular electrical services is interrupted.

IT'SH A BOY: Mrs. Jonathan Paine, 30, has been allowed to give up alcohol now that she has given birth to a 7-pound baby boy. Her doctors in Melbourne, Australia, prescribed drink two months ago to reduce contractions that might cause premature birth. "I was constantly drunk for the sake of the baby," said Mrs. Paine.

MAINE REFINERY: Maine's Environmental Improvement Commission has rejected plans to build a \$150-million oil refinery on Sears Island, midway up the Maine Coast. Maine conservationists opposed the project on the ground it would expose some of the state's most scenic coastline to constant danger from oil spills. Proponents of the 200,000-barrel-a-day refinery, including the state's Economic Development Department, argued it would stimulate Maine's stagnant economy.

ABORTION FOR FOREIGNERS: More than 5,000 women travelled to Britain to have abortions during the first half of this year. Sir Keith Joseph, social services secretary, said the foreign women accounted for 11 percent of the abortions in England and Wales.



MARY TYLER MOORE SHOW-- HERE'S MARY!-- Lovely Mary Tyler Moore portrays a sexy, sensitive young TV news producer on The Mary Tyler Moore Show, telecast Tuesdays at 8 P.M. on C.J.C.L. Television.

ARTHUR F. MILLER
ADVOCATE - LAWYER
SHOPPING CENTRE MALL
LABRADOR CITY
OPEN 9:00 a.m. - 5:30 p.m.
PHONE MONDAY THROUGH FRIDAY 944 - 5909

NORTHERN REALTY LTD.

FOR SALE:
4 BEDROOM HOUSE ("J" TYPE). FULLY FURNISHED. IN LABRADOR CITY. SELLING AS A FURNISHED UNIT.

FOR SALE:
4 BEDROOM HOUSE ("J" TYPE). LOCATED IN LABRADOR CITY.

WANTED:
IN LABRADOR CITY. HOUSE SELLING IN THE \$18-20,000 BRACKET.

FOR FURTHER INFORMATION, PHONE 944-2597.

ASHUANUPI CALENDAR
SEPT.-OCT. 1971

Sunday	Monday	Tuesday	Wednes.	Thurs.	Friday	Satdy.
			29	30	1	2
			"Casino Night" Sponsored by AAA.	Movie: "No Name on The Bullet."	Dancing to the music of the "The Black Velvet Band."	Dancing to the music of the "The Black Velvet Band."
3	4	5				
Dancing to the music of the "The Black Velvet Band"	Movie: T.B.A.	Games Night				

TELEPHONE 944-2223



Savings Sweep



QUEBEC "McINTOSH" NEW CROP APPLES POMMES	5 lbs	69¢
CALIFORNIA LEMONS CITRONS	6/39¢	
CALIFORNIA "TOKAY" RED GRAPES Canada No. 1 RAISINS ROUGE	lb	39¢
QUEBEC NEW GREEN CABBAGE CHOU VERT	lb	9¢
QUEBEC WASHED TURNIPS NAVETS LAVÉS	lb	9¢
UNITED STATES FRESH GREEN MILD SHALLOTS CANADANO.1 ÉCHALOTES VERTES DOUCES	2 bchs	25¢
QUEBEC "BOILER" ONIONS OIGNONS	10 lbs	89¢

"CRINO" EVAPORATED MILK
LAIT ÉVAPORÉ
16 oz
5/89¢



"ALLEN'S" APPLE JUICE VITAMINIZED
JUS DE POMMES VITAMINÉ
2¹⁹ oz
45¢



"CRINO" INSTANT SKIM MILK POWDER
LAIT ÉCRÉMÉ EN POUDRE
3 lbs
1 54

"LIPTON'S" CHICKEN NOODLE SOUP
SOUPE POULET ET NOUILLES
Pqt 2 env. Pack
27¢

"BOOTH" COD FILLETS
FILETS DE MORUE
1 lb
59¢

"BOOTH" HADDOCK FISH STICKS
BÂTONNETS D'AIGLEFIN
8 oz
49¢

"MAP-O-SPREAD" BEURRE D'ÉRABLE
28 oz
63¢

"HABITANT" STRAWBERRY OR RASPBERRY JAM
CONFITURE DE FRAISES OU DE FRAMBOISES
24 oz
69¢

"VACHON" CARAMEL SPREAD
BEURRE DE CARAMEL
59¢

"VACHON" SUGAR SPREAD
BEURRE DE SUCRE
32 oz
59¢

"POST" CEREALS
HONEY COMB CÉRÉALES
9 oz
51¢

"LIDO" SANDWICH BISCUITS
BISCUITS SANDWICH
Sensation 12 oz. Pudge 12 1/2 oz.
39¢

"LIDO" SANDWICH BISCUITS
BISCUITS FEUILLE D'ÉRABLE
Maple Leaf 14 oz
45¢

"LIPTON'S" CASSEROLE BASES
PRÉPARATIONS
Stroganoff 6 1/2 oz. Tetrazzini 6 5/8 oz. Goulash 6 3/8 oz.
57¢

"ROYAL ROSE" PEAS
POIS
Grosneur No. 4 Sieve 19 oz
2/51¢

"ROYAL ROSE" CREAM STYLE CORN
MAÏS EN CRÈME DE FANTAISIE
2¹⁹ oz
51¢

"SHIRRIFF'S" GOOD MORNING MARMALADE
MARMELADE
24 oz
63¢

"McLARENS" QUEEN PLAIN OLIVES
OLIVES ORDINAIRES
15 oz
69¢

"McLARENS" STUFFED MARZANILLA OLIVES
OLIVES FARCIES
8 oz
49¢

"MIR" LIQUID DETERGENT
DÉTERSIF LIQUIDE
2²⁴ oz
85¢

"BLUE BONNET" MARGARINE COLOURED
MARGARINE COLORÉE
1/4's 1 lb
39¢

"SWIFT'S" PREMIUM COOKED HAM
JAMBON CUIT
1 1/2 lb
1 93

"FESTIVAL" ICE CREAM
CRÈME GLACÉE
Format 3 chop./pt Size
79¢

"HEINZ" STRAINED BABY FOODS
ALIMENTS EN PURÉE POUR BÉBÉS
3/4 oz
6/85¢

FEATURE of the WEEK		
NFLD. SALT BEEF		59¢ LB.
COCA-COLA	28 oz. Btl.	3/51.00
BURN'S VIENNA-SAUSAGE	4 oz.	4/99¢
CORDON BLEU HOT CHICKEN SAUCE	19 oz.	3/78¢



LABRADOR CITY

the **Bay**

AURORA, LABRADOR, SEPTEMBER 1971-13
 Prices effective September 30th October 1st and 2, 1971

SAVINGS

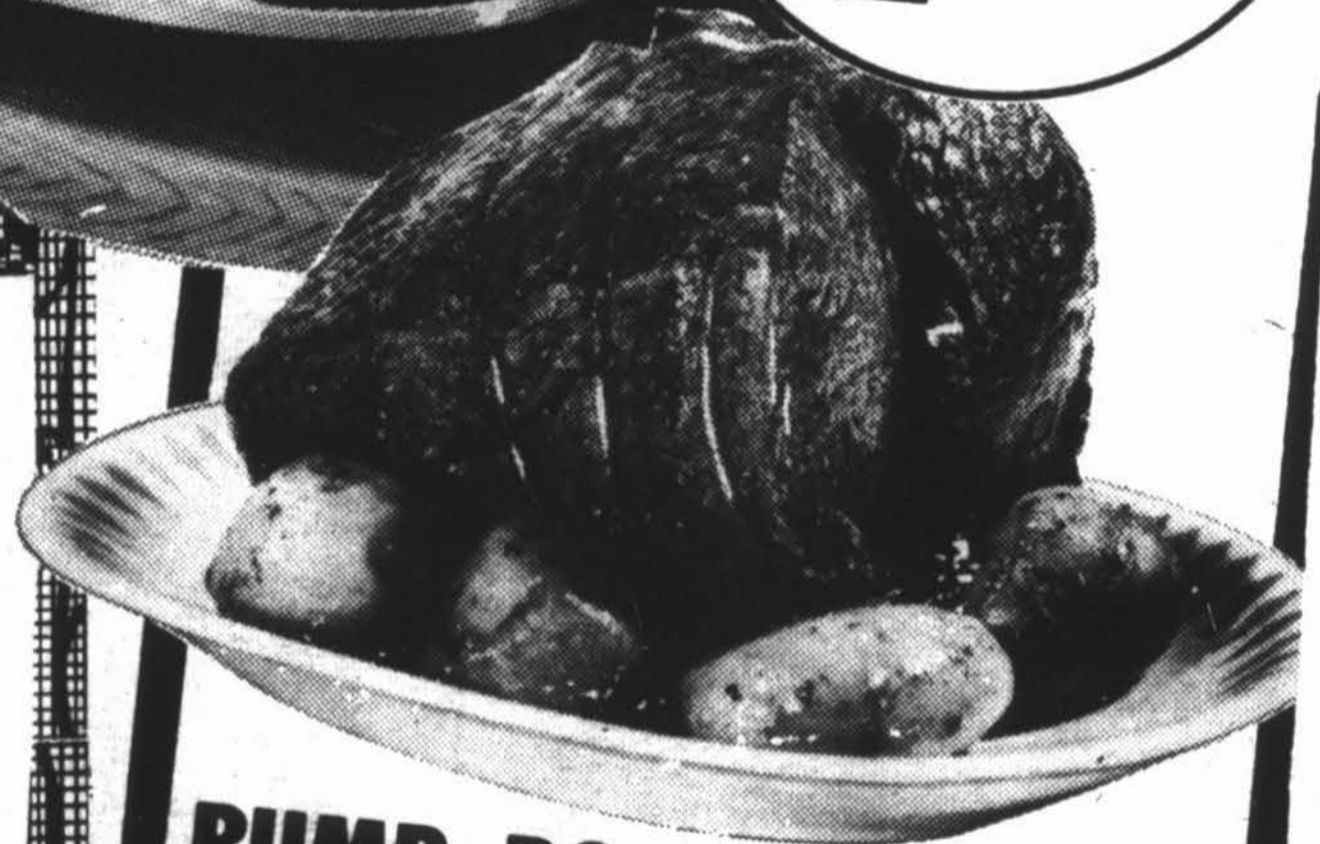
ROUND STEAK

STEAK DE RONDE



1.09
lb

Red Brand Beef
 Boeuf de marque
 Rouge CANADA No. 1



RUMP ROASTS
 RÔTI DE
 CROUPE **\$1.09**
lb

FRESH GROUND LEAN
MINCED STEAK
STEAK HACHÉ
 FRAIS MAIGRE **89¢**
lb

SLAB BACON
 WHOLE OR PIECE
BACON
 ENTIER OU MORCEAUX **59¢**
lb

"COORSH"
WIENERS
SAUCISSES FUMÉES **59¢**
1 lb

"COORSH"
SMOKED MEAT
VIANDES FUMÉES **4 2 oz 99¢**

"HYGRADE"
SLICED COOKED MEATS 6 oz
 Mock Chicken Macaroni & Cheese Meat & Olive
VIANDES CUITES TRANCHÉES **3/79¢**

CALVES LIVER
FOIE DE VEAU **1 39**
lb



"SALADA"
 ORANGE PEKOE

TEA BAGS
 SACHETS
 DE THÉ 60's **81¢**

"LIBBY'S" 10 oz
 TOMATO JUICE **6/85¢**
 JUS DE TOMATES

"NESTLE'S QUIK"
 CHOCOLATE 2 lbs **99¢**
 BREUVAGE AU CHOCOLAT

"BLUE BONNET" 3 lbs
 MARGARINE COLOURED **1 09**
 MARGARINE COLORÉE

"SWIFT'S" PREM
 LUNCHEON MEAT 12 oz **58¢**
 VIANDE DE CONSERVE

"KLEENEX"
 TOWELS Super 12's **59¢**
 ESSUIE-TOUIT Reg. 12's
 Kotex Plus 12's

"SUNLIGHT" 2 x 24 oz
 LIQUID DETERGENT **99¢**
 DÉTERSIF LIQUIDE

"NEW SUNLIGHT"
 SOAP BARS **95¢**
 BARRES DE SAVON 4 lbs 11 oz
 25' in-pack coupon

"ALLEN'S"
 DRINKS 48 oz **2/81¢**
 BREUVAGES

"SLACK'S" 10 oz
 WHOLE MUSHROOMS **49¢**
 CHAMPIGNONS ENTIERS

"FUTURE" ACRYLIC LIQUID
 FLOOR POLISH 27 oz **1 39**
 CIRE LIQUIDE

"GOUVERNEUR"
 MOLASSES 40 oz **43¢**
 MÉLASSE

BREAD 'N BUTTER 15 oz **38¢**
 PICKLES "HEINZ"
 CORNICHONS PAIN ET BEURRE

"LIPTON'S" Orientale
 CASSEROLE BASES **57¢**
 PRÉPARATIONS 5-7/8 oz

"FRENCH'S"
 MUSTARD 16 oz **2/63¢**
 MOUTARDE

"PLANTERS"
 PEANUT BUTTER 16 oz **61¢**
 BEURRE D'ARACHIDES

"WONDERSOFT"
 BATHROOM TISSUE **2/69¢**
 PAPIER DE TOILETTE Pqt
 2 roul./roll
 Pack

"KOTEX"
 FÉMININE NAPKINS **55¢**
 SERVIETTES SANITAIRES

"ALL" Format GIANT Size
 DETERGENT POWDER **1 87**
 DÉTERSIF EN POUDRE

"CLOSE-UP"
 TOOTHPASTE & MOUTHWASH **1 03**
 PÂTE DENTIFRICE 25% more
 ET RINCE-BOUCHE Free

"CROWN BRAND"
 CORN SYRUP **67¢**
 SIROP DE MAÏS 3 lbs

From The National Press

STADIUMS BEFORE CHILDREN: MONTREAL'S SAD PRIORITIES: (Toronto Globe & Mail). Almost as many children are taken from their homes in Quebec and are placed in institutions or foster homes as in the rest of Canada put together; nearly 23 per cent of Quebec's schoolage children are physically handicapped; more than 360,000 children out of 1.5 million need special care. The cause? Poverty, poor health standards and a desperate lack of child care programs for underprivileged and lower middle class families, according to the Quebec Corporation of Professional Social Workers. This information follows by two weeks the news that a study in Montreal has tabulated the disastrous effect of poverty among children in a deprived area of the city. The study was undertaken by the city's health department and the medical staff of the Montreal Catholic School Commission.

It found that more than half of the 3,424 children examined were physically ill and more than 10 per cent of them required hospitalization. In a typical school, 51 per cent of the students' homes had "inadequate sanitary conditions." Earlier this summer we were told that Montreal is going to have a new stadium in 1975. It will be used in the 1976 Olympics after which a dome will be added. There will be seats for 55,000 and total accommodations for 80,000.

Montreal will pay \$25-million but the total will be two or three times that, according to an Olympic Official. The city is expected to seek the remainder from the Federal Government. However, that's not the end of the costs. Once built, the stadium will have substantial operating expenses. For instance, climate control under the dome will run to about \$10,000 per day. The stadium will be an engineering marvel, we are told.

Yet as long as there remains insufficient money and effort to fight the deprivation, malnutrition, illness and learning disabilities among Montreal children, the marvel will be that the stadium could be built at all.

CUT BACK IN NEWFOUNDLAND OUTPORTS: (Financial Post): In 20 years, Newfoundland has reduced by half the number of its poverty-ridden fishing outports over the opposition of starry-eyed romantics, well-

meaning sociologists and the uneducated suspicion of the weather-wrinkled fishermen who live in these communities. But it will not take another 20 years to finish the job.

Government expenditure on relocation of outport inhabitants has risen to \$2 million a year—enough to relocate some 1,000 families each year. As the economy of Newfoundland improves in the 1970s, creating more jobs, many more fishing families will want to move into the towns. The tiny communities around the coast of Newfoundland and Labrador were formed to enable the early population of the province to make the most of the fishery around the island.

As the size of a small coastal community grew above a few families, the younger fishermen had to take their wives and settle in a cove farther up the coast where there was no danger of the local patch of sea being overfished. By the early 1950s, Newfoundland had 1,200 communities around the coast, with only three or four families in each. Often the only access was by boat and there was little medical care and schooling available.

In 1954, the provincial government started cash grants of \$150 to families that would move into more central communities or towns. In other parts of Canada centralization of the population has occurred without government assistance, but in Newfoundland poverty is too big a hurdle. In 1965, Ottawa started to play its part through the federal-provincial Fisheries Household Resettlement Agreement, which expired March 31, 1970.

A broader agreement was completed August, 1970, under which \$2 million-\$2.5 million will be spent helping families to resettle. The basic grant is now \$1,000, and \$200 for each member of the family. The government, in addition, absorbs the cost of actually moving the family and their personal effects.

From Newfoundland's point of view, the money is well spent. As well as resettling poor families close to clinics and schools, it helps to tackle a stubborn demographic problem. The population of Newfoundland is about 500,000, of which 300,000 live on the Avalon Peninsula, and half of these in the city of St. John's. Migration into Newfoundland is almost zero, but emigration is high; the province loses many of its young people to Central

Canada, where they can more easily find employment. Bringing Newfoundland in from the outports helps to fill the gaps created. In the 20 years since cash grants began, the number of outport communities has fallen to about 870 (government official estimate). P.S. Van Es, deputy minister of Community and Social Development, says: "We would like to bring the number of communities down to 300-400, though that's only a general expression of hope. And when we get down to that level we may want to change our target."

WOMEN'S IRISH UP OVER PILL BAN: (Montreal Gazette). Earlier this year the Irish Senate sidetracked a woman member's bill to legalize contraceptives while outside a group of women chanted: "We shall not conceive." Three women attempted to take their protest to the Senate floor, but policemen grabbed them.

By an overwhelming show of hands, the Senate voted to shelve discussion of the bill introduced by Senator Mary Bourke Robinson to repeal the 1935 ban on the import, sale and advertising of contraceptives. The hierarchy of the Roman Catholic Church, traditionally a powerful voice in the Irish Republic; has said it would fight to maintain the status quo as well as any attempt to legalize divorce. Senator Robinson, an attractive newlywed who is a law professor at Trinity College, Dublin, is a Roman Catholic. She and her co-sponsor Senator John Horgan, contended that unity can never be achieved with Northern Ireland while the republic clings to laws opposed by the Protestant majority of the North.

Senator Thomas Mullins, spokesman for Prime Minister Jack Lynch's Fianna Fail party, said the government will consider introducing its own bill, but accused Senator Robinson of approaching the issue in a "schoolgirlish, irresponsible manner. We are not going to be panicked, frightened, rushed or pushed about from right to left or by pressure groups," he said. About 20 women, some with their children, demonstrated outside the Parliament Building, chanting, "We shall not conceive," to the tune of "We Shall Overcome." Police were called out when about a dozen women pushed past guards and made for the building, but three women gained entry through an overlooked window in the men's room.

One of the women who got in was Mairin de Burca, secretary of the nationalist Sin Fein—Ourselves Alone—movement. She said a national campaign will be launched to win support for Senator Robinson's bill. "We intend to continue with our protests," she said.

Ayre's
WABUSH

RCM CAMDEN SPECIAL

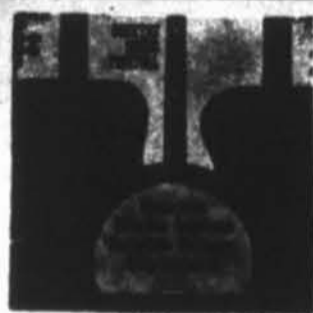
Numbers 1 to 4
43 and 44
REG. \$2.98
SPECIAL
\$2.75

Numbers 5 to 42
\$1.75 ea. or
3/\$4.98

- 12. CONNIE SMITH—MY HEART HAS A MIND OF ITS OWN
- 13. TOP TWELVE HITS—VOL. 3
- 14. EDDY ARNOLD
- 15. DON GIBSON—I WALK ALONE
- 16. NORMA JEAN
- 17. TWELVE TOP HITS—VOL. 10
- 18. THEM FROM LOVE STORY
- 19. WALT DISNEY'S SNOW WHITE AND THE SEVEN DWARFS—AS TOLD AND SUNG BY DENNIS DAY
- 20. TOP TWELVE HITS—VOL. 11
- 21. JOHN MCCORMACK SINGS IRISH SONGS
- 22. LIVING VOICES SING IRISH SONGS
- 23. ACCORDING TO MY HEART—JIM REEVES
- 24. HANK SNOW—I WENT TO YOUR WEDDING
- 25. THE LORD IS MY SHEPHERD—GEORGE BEVERLY SHEA
- 26. THE OLD AND GREAT SONGS—HANK SNOW
- 27. ELVIS ALMOST IN LOVE



2. C'MON EVERYBODY—ELVIS — Follow That Dream, I'll Take Love, I'm Not the Marrying Kind.



11. COUNTRY MUSIC FESTIVAL — Dolly Parton, Charley Pride, George Hamilton IV, etc.



10. WILF CARTER — The Old Rugged Cross, Let's Go Back to the Bible, What a Friend We Have in Jesus, etc.



9. THE CARTER FAMILY — Darling Little Joe, Lone some Pine Special, When the Roses Come Again, etc.



• WILF CARTER—BRIDLE HANGING ON THE WALL — There's a Bridle Hanging on the Wall, My Yodelling Sweetheart, etc.



1. BONNIE LOU NOLAN — It's such a pretty world, B.J. the D.J., Jimmy Jack, etc.



8. THE BEST OF THE CARLTON SHOWBAND — Black Velvet Band, Bonnie Wee Jeannie McColl, The Night Pat Murphy Died, etc.



4. ROY PAYNE'S COUNTRY — 22 Dollars from Dallas, Canadian Princess, Fiddle Diddle, etc.



5. TWELVE TOP HITS—VOL. 5—One Bad Apple, Amazing Grace, Watching Scotty Grow, etc.



6. LIGHTFOOT COUNTRY—GEORGE HAMILTON IV—Early Morning Rain, Steel Rail Blues, Did She Mention My Name, etc.



7. AMAZING GRACE — THE BLACKWOOD BROTHERS QUARTET — Put Your Hand in the Hand, Whispering Hope, The Voice of the Lord, etc.

- 28. HOWDY NEIGHBOR HOWDY — PORTER WAGONER
- 29. GEORGE BEVERLY SHEA—I AM NOT ALONE
- 30. PORTER WAGONER
- 31. WILF CARTER—THE YODELLING SWISS
- 32. HANK SNOW—MY NOVA SCOTIA HOME
- 33. THE BEST OF NED LANDRY
- 34. WILF CARTER — BY REQUEST
- 35. OFF TO DUBLIN IN THE GREEN—THE DUBLIN ROGUES
- 36. THE SINGING RANGER—HANK SNOW
- 37. COUNTRY SIDE OF JIM REEVES
- 38. JOHANN STRAUSS JR. WALTZES
- 39. SHAY DUFFIN AND THE DUBLIN ROGUES
- 40. LET'S BE FRIENDS—ELVIS
- 41. THE ONE AND ONLY HANK SNOW
- 42. THE BEST OF WILF CARTER
- 43. ELVIS
- 44. PERRY COMO—DOOR OF DREAMS

ORDER FORM

PLEASE CIRCLE THE NUMBER OF RECORDS YOU WISH TO ORDER.

1	2	3	4	5	6	7	8	9
10	11	12	13	14	15	16	17	18
19	20	21	22	23	24	25	26	27
28	29	30	31	32	33	34	35	36
37	38	39	40	41	42	43	44	

Amount Enclosed _____
NAME _____
ADDRESS _____
Available at all Ayre's

WABUSH

Ayre's
WABUSH

SEPTEMBER SALE

**SPECIALLY PRICED MERCHANDISE FOR EARLY SHOPPERS
(WHILE QUANTITIES LAST)**

<p>LARGE SPLIT PHILCO PLANTS ARTIFICIAL REDUCED TO CLEAR</p>		<p>ENGLISH DINNER WARE SETS \$7.77 20 PCE. STARTER SETS SALE REG. \$10.98</p>	
<p>C. G. E. PROFESSIONAL STYLE HAIR DRYER</p>	<p>\$29.99</p>	<p>SPORTSMAN LANTERNS \$9.00 REG. \$19.95 SALE</p>	
<p>C.G.E. MIXMASTER WITH BOWLS & STAND</p>	<p>\$39.99</p>	<p>SCHOOL BAGS \$1.99 REG. \$2.49 SALE</p>	
<p>C. G. E. TWO SLICE TOASTER</p>	<p>\$19.99</p>	<p>PLASTIC COATED NYLON CLOTHES LINE 29^c REG. 89^c FOR 50 ft. NOW JUST PER 100 ft.</p>	
<p>C. G. E. ELECTRIC SLICING KNIFE</p>	<p>\$21.99</p>	<p>.303 BRITISH RIFLE \$36.66 REG. \$37.95 & \$44.44 SALE</p>	
<p>C. G. E. ELECTRIC IRONS SPRAY & STEAM</p>	<p>\$15.99</p>	<p>15 PCE. COFFEE SETS \$7.77 REG. \$14.99 SALE</p>	
<p>ENGLISH DINNERWARE SETS \$33.33 PRINTED PATTERN SALE 45 PCE. REG. \$45.95</p>		<p>A LARGE SELECTION OF MIRRORS 30% OFF THURSDAY 30 SEPT. ONLY</p>	

PAINT SPECIALS



<p>C. I. L. PORCH & FLOOR GREY SPECIAL \$6.99 GAL.</p>	<p>C. I. L. EXTERIOR HOUSE PAINT SPECIAL \$7.99 GAL.</p>	<p>C. I. L. SEMI-GLOSS INTERIOR SPECIAL \$7.99 GAL.</p>
--	--	---



Paints

If you'd used CIL paint last time, you wouldn't be painting now.

Canadians finally get with it on own wines!

By Joy Carroll

In Tbilisi they love our port, in Lisbon they are mad about our sherry and in London they celebrate our champagne. Canadian wines have won silver medals in international competitions in all three cities.

And now, at last, Canadians are also discovering Canadian wines.

In 1970, Canadians bought 11.5 million imperial gallons vs seven million in 1964. Domestic wines account for about 70 per cent of the total sales of wine across the country.

While many executives are glooming over balance sheets and reducing staff these days, the Canadian winegrower is expanding markets and hiring more help. New wineries are being built and new wines are being developed.

And amateur winemaking has become quite popular (see p. 21)

"There is at least one winery in every province except Newfoundland and Prince Edward Island," says John K. Couillard, general manager of the Canadian Wine Institute.

"We project a sales increase of 10 per cent for 1970."

Sherries and ports head the best-seller lists, followed by champagne, which outsells the imported labels.

The fact that a Canadian wine is usually cheaper than a comparable imported one accounts for some of the enthusiasm in the marketplace.

For example, a bottle of Mumm's champagne (French) will cost you \$7.59, while Bright's President champagne (Canadian) is \$4.15. And you can get Barnes Catawba sherry for \$1.05, while Penfolds Royal Reserve (Australian) is \$1.50.

In order to increase sales still further, something may have to be done about the flavor of Canadian table wines and the mystique surrounding those informational foreign labels.

Many Europeans living in Canada do not like the distinctive flavor of our concord and catawba grapes, and so wineries are trying to blend them out.

There are no vintage wines in Canada, hence there is no date on the bottle, no Chateau, no vineyard. This rules out all those exquisite discussions sodearto the heart of many a wine, was bottled, the name of the vineyard, and the side of the hill on which the grapes were grown.

"By blending the wines we have a uniform quality. None of this good year and bad year," Couillard explains.

Not everybody agrees with his use of the word "quality," however. Artist Harold Town has written that Canadian wine is "tinny swill." CP Air, one of the two major Canadian carriers, does not serve Canadian wine on any of its flights. Winegrowers have protested but to no avail.

Explains CP Air: "We serve only European wines on our flights because they have achieved the highest standards of public acceptance. Our wines are chiefly German and French."

Acceptance? Well, what do you mean by acceptance? In the 12 months ending March 31, 1970, sales of Canadian wines in Ontario alone totaled \$33.6 million.

It takes a heap of grapes (42,502 tons last year) and an army of grapegrowers, pickers and wine makers (2,000) and a mountain of bottles (66 million in 1970) to convey all that wine to the con-

sumer. But there are about 24 Canadian wineries prepared to carry the burden.

There have been shifts and changes in the ownership and control of wineries in Canada during the past 10 years.

The latest tally gives Distillers Corp.-Seagram's Ltd. a controlling interest in Jordan Wines Ltd., (Ontario), Villa Wines Ltd. (British Columbia), Danforth Estates Wines Ltd. (Manitoba), and T. G. Bright Ltd. (Ontario).

Labatt Breweries of Canada Ltd. controls Normandie Wines Ltd. (New Brunswick), and Parkdale Wines Ltd. (Ontario).

Castle Wines Co. (Saskatchewan) is owned by Imasco Ltd., and Chateau-Gai Wines Ltd. (Ontario) is an independent public company.

London Winery Ltd., (Ontario) is independently owned and Turner Wine Co. (Ontario) is a family company. Colona Wines Ltd. (British Columbia) is owned by the Capozzi family, Andres Wines (British Columbia) and Abbey Wines Ltd. (Nova Scotia) have a joint headquarters in Ontario and are associated companies.

Barnes Wines Ltd. (Ontario) is independent. Casabeloo Wines

(British Columbia) is owned by a group of West Coast businessmen, Mission Hill Wines Ltd. (British Columbia) is controlled by Ben Gintner, who also owns breweries and construction firms. Valley Rouge Wines Ltd. (Manitoba) is owned by a group of Winnipeg businessmen.

Canadian winegrowers are interested in promoting their table wines. Before World War II, they made very little table wine and were not geared to the new market. It takes 10 years to develop a new wine.

Vines have been brought from France to the Niagara peninsula where they were planted, tested and replanted, in the hope of producing a wine appealing to the taste of the large immigrant population.

An imported vine must be disease-resistant and also yield a crop that makes it practical for the grape grower. A yield of from one to four tons per acre will make 150 gallons of wine. The resulting wine must also blend with existing wines.

A few Canadian wineries are beginning to look to the export trade. Britain is now a market for Canadian wine but provides a unique headache. In that country,

Canadian winemakers cannot call their sherry by that name. It must be called an appetizer wine. They cannot call port "port," either. That's a dessert wine.

The U.S. has no such restrictions and some Canadian wines are finding their way to the Eastern seaboard. There is a suit pending against one Canadian winery for using the word "Champagne." This was brought by French champagne producers and is settled.

As a consumer, you may occasionally get a bottle of bad wine. The thing to do is give yourself a taste test before you complain to the winery. It may be the garlic you ate, or the cigar you smoked. If you're convinced the bottle is really bad, report it to the winery. They can check out the whole batch from the code on the label.

If, as Pliny said, "In Vino veritas" (in wine there is truth), then Canadian vintners can dwell with satisfaction on the statement of one Canadian consumer:

"I always keep a bottle of Bright's President champagne in my refrigerator. I wouldn't be without it." (Reprinted from The Financial Post)

LEGAL CARD

ISAAC MERCER. Q.C., L.I.B.,
Lawyer, Notary & Advocate

365 Duckworth St., St. John's, Nfld.
Phone 726 - 8844 P.O. Box 1028.

O'BRIEN HALL

Has Facilities for Private Parties, Weddings,
Meetings, Showers & Stag Parties.

PHONE 944-2400

OUR MOTTO: Service and Courtesy.

CAROL PAINTING LTD.
PAINTING CONTRACTOR
DOMESTIC AND
INDUSTRIAL PAINTING

REASONABLE
PRICES
5 MAPLE
CRESCENT
APARTMENTS
PHONE 944-5551

PHONE
TODAY
FOR FREE
ESTIMATE



Scanning the Market

Labrador First Investment Fund. (Sorry the delay in our monthly report but experienced space problems). We finally had a bad month—our first reverse since last winter—with net assets falling by \$568.00 to \$17,902.00. Following Nixon's import surcharge we decided to improve our cash position, selling our 300 shares of Sklar Furniture at \$2.20 and reducing our holding in Ranger Oil to just 100 shares—this brought \$1,400.00 to the Treasury.

Falling prices in August reduced our year to date profit to \$3,602.00—still a pretty respectable figure.

Here was our position as of 31 August 1971:

COMPANY	HELD	PER SHARE	TOTAL VALUE
Unican Security	1,000	\$4.40	\$4,400.00
Western Declata Oils	400	7.35	2,940.00
B.P. Oil & Gas	200	6.90	1,380.00
Amalgamated Prop.	2,000	.65	1,300.00
Ranger Oils	100	12.87	1,287.00
R. Costain Ltd.	200	6.37	1,274.00
Wajax Ltd.	100	12.00	1,200.00
Revenue Prop.	2,000	.57	1,140.00
TOTAL VALUE			\$14,921.00
DIVIDENDS RECEIVED			491.00
CASH ON HAND			2,490.00
After Brokerage Fees of \$956.00			
TOTAL ASSETS 31 AUGUST 1971			17,902.00
LOSS FOR MONTH OF AUGUST			568.00
PROFIT YEAR TO DATE 1971			3,602.00
PROFIT MADE DURING 1970			4,300.00
TOTAL PROFIT SINCE START OF FUND 1 JAN. 1970			7,902.00

7 SMALL-MEDIUM FIRMS OFFER GROWTH POTENTIAL: Stock markets in both Canada and the U.S. have been sluggish of late, largely because investors are still discouraged by business profits. However, the tremendous growth in the money supply in both Canada and the U.S. over the past year has laid the base for an economic recovery—especially in the U.S.—over the next year or two that will be much greater than most market observers now are expecting.

History has shown us that the effects of major changes in monetary policy are quite slow in showing, and it is not unusual that business should now only be starting to pick up after over a year of dramatic money-supply growth. While the stock market will not show the kinds of gains we have seen in recent months, there is still plenty of room for further appreciation. Now that the market has recovered to a greater extent—in the U.S. than Canada—we should look with renewed interest at certain segments of the Canadian market.

There are a number of small to medium-size Canadian companies we believe have outstanding growth potential. These, for the most part, are also customer-oriented. The only drawback from an investor's point of view is the fact that most of these stocks have quite limited marketability. However, we have found that, with patience, positions can be acquired in a number of these securities.

Companies such as Ivaco, Western Broadcasting, Irwin Toy, Scott's Restaurants, Electrohome, Reitman's, Magnasonic, Metropolitan Stores and General Distributors have put together outstanding records of growth and sell at reasonable price—earnings ratios. Recent tax changes whereby pension funds and registered retirement saving plans will have to limit foreign content to 10 per cent of assets should enhance the prospects for the stocks of these well-managed companies with relatively small capitalizations.

PHONE ORDERS:
On Tuesday &
Wednesday
Phone: 944-2611
or 944-2612

CAROL — WABUSH
QUALITY CO-OP SERVICE

STORE HOURS:
TUESDAY, WEDNESDAY,
SATURDAY
9:00 a.m. to 6:00 p.m.
THURSDAY & FRIDAY
9:00 a.m. to 9:00 p.m.
PHONE 944-2611
SUPPORT YOUR CO-OP

Here's How-Here's Where
TO SAVE ON YOUR FOOD BILLS

Taste the Difference...
Save the Difference
BETTER
Meats

FRESHER FLAVOR
FINER QUALITY IN
Produce

FRESH GROUND HAMBURGER		49^c LB.
LE GRADE CHICKEN BREAST	2 LB. BOX	\$1.19
SMOKED PICNIC HAM	HALF OR WHOLE	45^c LB.
BLACK OR WHITE PUDDINGS		59^c LB.
BLUE BUOY SALT FISH	1 LB. PKG.	69^c LB.

POTATOES	10 LB. BAG	55^c
CARROTS	2 LB. BAGS	19^c
ONIONS	2 LB. BAG	29^c
GARLIC		19^c PK.
LETTUCE		29^c HD.

CO-OP
MILK 16 OZ. **5/95^c**

CO-OP
APPLE JUICE 19 OZ. **5/99^c**



CO-OP
PEAS & CARROTS 2/29^c
10 OZ.

CO-OP
INSTANT COFFEE 6 OZ. **99^c**

CO-OP
BEANS with PORK 2/75^c
28 OZ.

CO-OP
TEA BAGS 100's **89^c**

WHITE SUGAR 2 LB. PKS. 2 PKS. FOR **45^c**

HEAVY DUTY 1.5 mil. CO-OP
GARBAGE BAGS 26 X 36, 10's **55^c**
PKG.

EXTRA SPECIAL SODA-POP 10 OZ.
PEPSI or SUNCREST CASE OF 24 TINS **\$2.98**

WHILE SUPPLY LASTS ESMOND LOOM AIR
THERMAL BLANKET 72" X 90" **\$6.50** EA.



WE RESERVE THE RIGHT TO LIMIT QUANTITIES

For your information

NEW LABRADOR PARTY:
The N.L.P. will be sponsoring a Card party & Bazaar on Oct. 5th at O'Brien Hall, beginning at 8:00 p.m. Hand knitted goods and baked goods, will be available at the door. For further information, Phone 282-6980 or 944-2215.

WABUSH GUIDING ASSOCIATION NEEDS YOU! The Guiding programme for Wabush has started another year. Unfortunately, as in other years we find our organization has insufficient adult leaders.

The importance of this leadership is vital if we are going to continue to keep our organization active. That is why we appeal to anyone who is interested in helping with, GUIDES, BROWNIES OR RANGERS to please come forward.

Previous experience is not essential but would be preferred, if at all available. The times of our meetings and person to contact is listed below for your convenience. Please give our youth the support they deserve and help the Guiding Association to remain active in the community.

1st. BROWNIE PACK-
TUESDAY 4:15 to 5:45 p.m.
2nd BROWNIE PACK-

MONDAY 4:15 p.m. to 5:45 p.m.
3rd BROWNIE PACK-
THURSDAY 4:15 p.m. to 5:45 p.m.

4th BROWNIE PACK
WEDNESDAY 4:15 to 5:45 p.m.
1st. GUIDE CO. TUESDAY
7:00 to 9:00 p.m.

2nd. GUIDE CO. MONDAY
7:00 to 9:00 p.m.
RANGERS TIMES TO BE
ANNOUNCED LATER

All of these meetings take place in the Centennial Lounge of the Recreation Centre.

For information please phone:
Mrs. Patricia Mills 282-6828
"District Guider"

Wabush.

GUIDING NEWS
CAROL LAKE DISTRICT

The Guiding season has again begun with meetings being held at the following times and places.

1st Carol Guide Company
Captain, Mrs. Jean Fenato, 7:00-9:00 p.m. Tuesday, All-Purpose Room, Labrador City Collegiate.

2nd Carol Guide Company
Captain, Miss Joan Hardie, 7:00-9:00 p.m. Monday, Youth Centre, Hudson Drive.

3rd Carol Guide Company,
Captain, Mrs. Betty Lewis, 7:00-9:00 p.m. Tuesday, Youth Centre, Hudson Drive

1st Carol Brownie Pack Brown Owl, Mrs. Gertrude Peck, 6:00-7:30 p.m. Friday Youth Centre Hudson Drive.

2nd Carol Brownie Pack, Brown Owl, Mrs. Rosemary Keating, 4:30-6:00 p.m. Thursday, Youth Centre, Hudson Drive

3rd Carol Brownie Pack, Brown Owl, Mrs. Betsy Whalen, 5:00-7:30 p.m. Thursday, Youth Centre, Hudson Drive.

4th Carol Brownie Pack, Brown Owl, Mrs. Theresa Henry, 4:30-6:00 p.m., Wednesday, Youth Centre Hudson Drive.

5th Carol Brownie Pack, Brown Owl, Mrs. Diane McHattie, 4:30-6:00 Tuesday, Youth Centre, Hudson Drive.

All groups are at present filled to capacity but a waiting list is being kept. Anyone wishing to have a name placed on the list, please phone 944-5690.

Plans are being made for the creation of a new group (or groups) but, in order for this to be done, a new district must be created, since Carol Lake District already has the maximum number of groups permitted. Opening a new district entails appointing a District Commissioner and forming a local association for that district.

New members are needed for the existing Local Association as well as for the hoped-for new one. Anyone who is interested in Guiding, men included, may become a member. It is not necessary to be a parent of a Guide or Brownie. So, if you are interested in seeing that all girls who want to, may join the Movement, please attend the Carol Local Association meeting at 8:15 p.m., Monday, October 11, in the All-Purpose Room, Labrador City Collegiate. Notices will appear in the local papers and on radio.

THE CAROL PLAYERS
De la grande visite -
Vous connaissez sans doute le

Theatre du Nouveau Monde?
C'est la troupe de prestige du Quebec. Eh bien, ils viennent ici. Six jeunes acteurs et un regisseur. Il faut que vous ne manquez pas ca. A aucun prix. Ces choses-la ne vous arrivent pas souvent. Ils seront ici les 18 et 19 octobre (lundi et mardi). Deux jours donc. Ils joueront. SOYEZ LA!

An announcement from the Carol Players:

A visit from LES JEUNES COMEDIENS DU THEATRE DU NOUVEAU MONDE, sponsored by The National Arts Centre, Youth Division. This nationally renowned troupe of six young actors and their stage manager will be including Labrador City-Wabush in this season's tour, giving us a rare opportunity to see professional theatre in the area. DON'T MISS THEM! Keep October 18th free for their public performance. More details in next week's issue.

INTEGRATED BOARD ANNUAL MEETING

At the annual meeting of the Labrador West Integrated School Board the following executive was elected: Chairman-Rev. J.R. Dickey; Vice-chairman - Mr. C. K. Smart; Treasurer - Mr. G.G. Newell; Secretary - Rev. W.J. Bellamy; Member - Mrs. D. Housberger.

The resignations of Mr. Wm. G. Taylor and Mr. Arthur Henderson were received with regret. Mr. Taylor served as Board Chairman for the past two years. Mr. Henderson was a member of the board since last November.

NTA
GILBERT PIKE TO
ATTEND LABRADOR
WEST NTA
MEETING

The Labrador West Branch of the Newfoundland Teachers' Association will hold its first meeting of the current school year on Wednesday, September 29, 1971 at 8 p.m., in the Council chambers of O'Brien Hall. The agenda will include election of school representatives, plans for 1971-72 and a special presentation by Mr. Gilbert Pike, President of NTA. All teachers are invited to attend.

SCOUTS & CUBS

REGISTRATION
LABRADOR CITY

CUBS: Wednesday - October 6 at 7:00 p.m.

LOCATIONS -C.E. McManus Auditorium

-Former United Church Building

SCOUTS: Friday - October 8th at 7:00 p.m.

LOCATION- Notre Dame Academy Gymnasium.

PARENTS are requested to attend the registration of their boys. Take this opportunity to meet the Scout & Cub leaders and group committee members.

Mammoth Games Night sponsored by Wabush Senior "B" Softball Assoc. at the R.C. Church, Wabush Thursday Sept. 30, 1971, starting at 8:30 p.m. Cards \$1.00 ea or 3 for \$2.50. Prizes: Jackpot - \$500.00 to go. 10 Games at \$50.00 ea. Early bird game \$25.00. Share the wealth \$?

EXPECTING A BABY?

Everyone needs milk. But for you, expectant mothers, milk and the other foods making up well balanced meals are needed for a developing baby and to help you feel well during pregnancy. Try to include 4 cups of milk in your daily meals. Any kind of milk may be used but keep in mind that skim milk has only half as many calories as whole milk.

Perhaps you do not like milk. Here are some ideas for including it in your daily meals:

- beverages such as hot chocolate, egg nog
- soups such as fish chowder, chowder, cream of tomato. (add milk to tinned soup instead of water)
- white sauces made with milk to serve with peas, carrots, salmon, chicken etc.
- milk puddings e.g. baked custard, butterscotch milk pudding, instant puddings
- casseroles made with milk e.g.

(Continued on page 20)

\$100.00 REWARD OFFERED

FOR INFORMATION LEADING TO THE CONVICTION OF PERSONS DAMAGING MUSICAL EQUIPMENT OF "THE KRYSTALS".
PLEASE CALL 944-2661.

WABUSH ENTERPRISES

For All Your Favourite Beers

India - Black Horse - Labatt 50

Molson's Export - Dominion

Blue Star - O'Keefe

Molson's Canadian

PATRONS ARE ADVISED OF THE FOLLOWING CHANGES IN SERVICE
NOW IN EFFECT

Home Delivery Service:

Monday to Saturday 9 p.m. to 8:00 p.m.

Warehouse pick-up service has been discontinued

Telephone orders taken Monday to Saturday

9:00 a.m. to 8:00 p.m.

We have Cooler Service permitting us to provide our customers with chilled beer at all times.



Phone 282-6877
or 282-6632

YOUR LIONS CLUB

1971 CAR RAFFLE

Knights of Columbus (O'Brien Hall)

To be held on Saturday October 16, 1971

300 TICKETS AT \$50.00

Free bar service from 8.00 p.m. to midnight
Lunch will be served from 11.00 p.m.

1st. ticket drawn \$100.00

\$50.00 prize for each 10th. ticket drawn

20 hp. skidoo second last ticket drawn.

Last ticket drawn: 1972 Impala Sport Sedan fully equipped.

Proceeds towards Safety-Sight Conservation and Blind.

Boys and Girls - Civic Improvement - Health and Welfare.

Labrador City - Wabush Area.

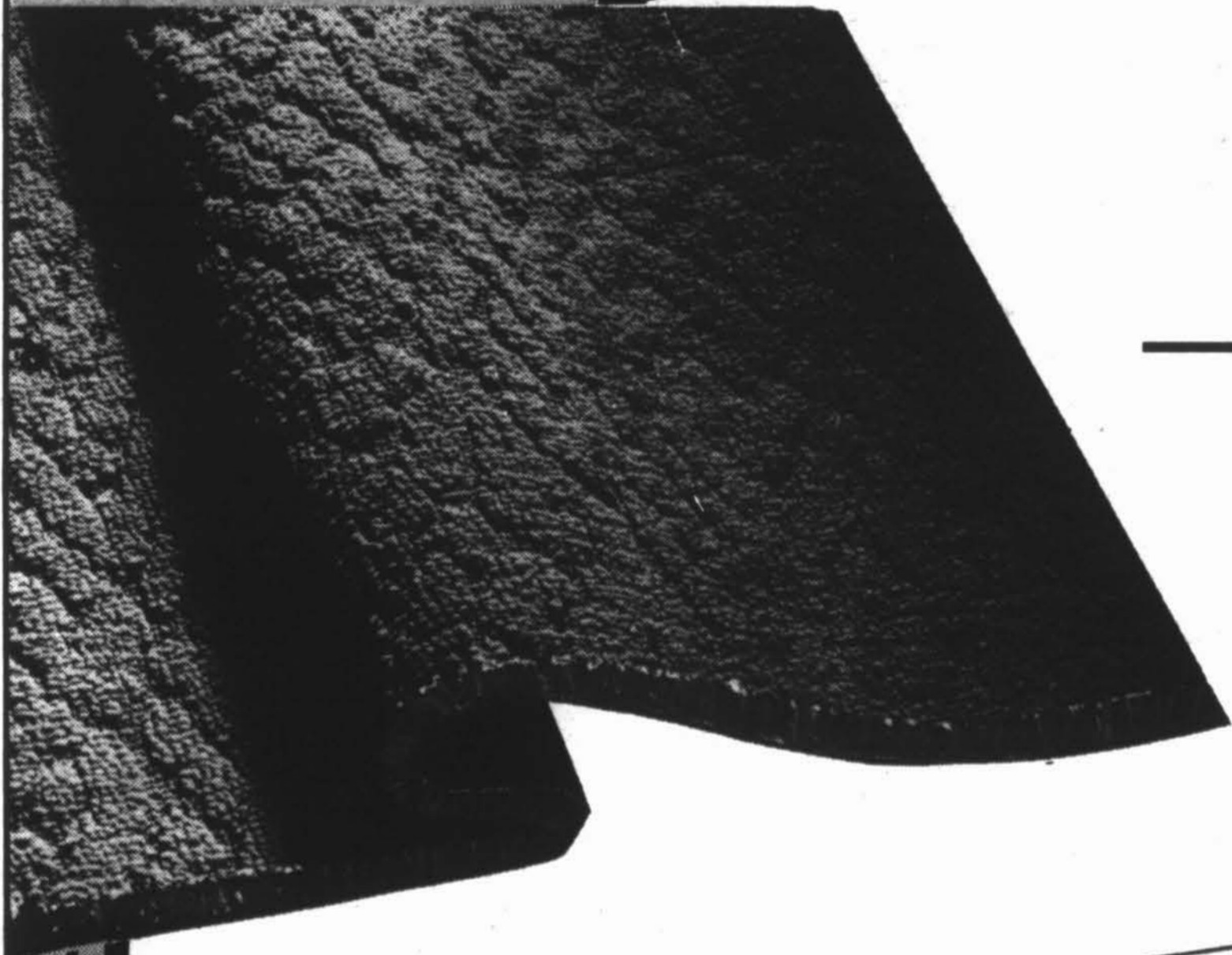
the  ay

LABRADOR CITY, NFLD.
offers you



incomparable CHOICE of CARPETS

at a REALLY LOW PRICE SEE.....



Colony Park of



**LES TAPIS
HARDING**
Are Different, It's Guaranteed

CARPETS



UNE ODYSSEE
CANADIENNE

aux motifs d'aujourd'hui

TODAY'S STYLE

10 BRIGHT COLOURS

UNBEATABLE OFFER!



**LES TAPIS
HARDING**

Colony Park

sont différents, c'est garanti

"Acrilan" CARPET

in 10 beautiful "NOW"
colours and designs

10⁹⁵
sq. yd.

including
underpad and installation

La Baie d'Hudson
VOUS L'OFFRE présentement

à un PRIX
que SEULE
la Baie
peut consentir

10⁹⁵

la verge carrée
incluant sous-tapis
et installation

SEE THE BAY FOR A COMPLETE SELECTION OF
WALL TO WALL CARPETS

For your information

(Continued from page 18)

CAMPAIGN ORGANIZATION

macaroni and cheese, scalloped potatoes.

• a piece of cheddar cheese ½" x ½" x 1 gives the same amount of calcium as ½ cup milk.

• ¼ pint of ice cream has similar calcium content as ½ cup milk.

• Skim milk powder is the most economical form to use. It has fewer calories than whole milk but no vitamin A.

PREGNANCY need not add pounds permanently. Look around at the youthful-looking young matrons you know. They are lithe, living proof that having a baby need not cause a woman to lose her figure. Today most doctors give special instructions on diet and exercise to expectant mothers—recommending a prenatal weight gain of not more than 15-18 pounds above normal weight—because they know that overweight can cause difficulties during childbirth. It is not how much you eat, but what you eat that contributes most to good nutrition. By eating well-planned, nutritious meals both before and after her baby's birth, a new mother can build up her vitality and keep her figure too.

Manager, John Murphy; Assistant Manager, Kevin Lee; Public Relations, Eldon Swyers and Charles Devine; Transportation, Bill Hiscock, Bob Walter and Colin Avery. Strategy, Joe Rousseau, Joe Collins, Jim Janes and Tom Riggs.

CO-ORDINATORS

Churchill Falls, E. Kearley, E. Canning, and R. Yipp. Twin Falls, Mrs. St. Clair Golding; Labrador City, Mrs. Judy Haines and Mrs. Marge Roberts. Wabush, Mrs. Kevin Lee; Labrador City, Mrs. Eileen Thoms, Wabush, Mrs. Madge Collins.

The present government announced some months ago that fifteen (15) public housing units would be purchased from Atlantic Design Homes in Stephenville and shipped to Labrador City. It appears that most, if not all, of these units have finally arrived. However, there seems to be some confusion as to how and to whom these units will be assigned. I believe they should be assigned to those residents within a stipulated salary range ac-

ording to a publicly-stated definite formula.

I know of at least 35 people who have been promised one of these 14 units, (yes, 14 units as one has already been assigned to the Humber Valley Broadcasting Co. of which the Non-MHA Minister without Portfolio, Dr. Noel Murphy, is president). I would speculate that the units will not be assigned until after the election, so the number of "promised" units may well exceed 35 by that time.

We have at least 150 families over and above those working with the mining companies who are providing essential services and doing a good job of it. On behalf of these people I respectfully request the government to come forward and enlighten these people publicly on their exact intentions regarding these public housing units. (It has been rumoured that 7 of the units have been assigned to a certain company in Labrador City — thus leaving only 7 for public assignment. I hope, for the sake of those people expecting some consideration in the allocation of these public housing units that this is merely a rumour).

A statement is due from the government on this matter. The time is now.

Some months ago I contacted the Minister of Health, Mr. E. Roberts, in an attempt to ascertain just what his government was prepared to do to improve medical facilities in Labrador City and Wabush. His reply (which I had published in the Aurora) was to the effect that his Department was trying to get doctors for this area.

The Iron Ore Co. of Canada & Wabush Mines are making an effort to secure additional doctors, and they are to be commended for their concern. However, public health is and must remain a government responsibility. Just what is the government doing about it? Has the sum total of its effort been to reply to my original letter — it would seem that way. In fact the situation has gone from bad to worse: More residents and less doctors. Labrador City has three doctors, Wabush has one doctor, and there is only one dentist to serve both towns with a population of approx. 12,000. To put it mildly I feel this is outright neglect by the government.

In order to secure proper medical attention a great number of our residents are forced to go outside at great personal expense, or just sit here and suffer. It takes days to get an appointment, and there have been a number of cases where immediate medical attention was needed but it was impossible to contact already over-loaded doctors.

This situation is unacceptable, but under these conditions the govt. still expects the residents of these two towns to support the liberal candidate in the forthcoming election. Does the government really expect support for its candidate after such neglect over such a long period? I hope not.

I now call on the Minister of Health to come forward for concrete proposals before the election is called, and not to use this issue as an election gimmick. The time is now!

In June, 1965, the Premier announced in Wabush to the residents of Labrador City and Wabush that his Government would build a provincial building in Wabush before the end of that year. Nothing materialized.

Again, during the election

of 1966, the same announcement was made and again nothing materialized.

Here we are, six years later and a little wiser. And the Premier has finally thought about us, although in a negative sort of way. He has come to the apparent conclusion that the residents of Labrador City and Wabush would not fall for the same promise again, so he instructed his chosen candidate, the Non-MHA Minister of Labour, to announce a "hole-in-the-ground"! And he did, now we have a hole-in-the-ground which, if the government runs true to form, will remain a hole-in-the-ground. Great progress in six years, isn't it? (I'm still wondering whether a public tender was called!)

A provincial building is very badly needed for our area. I now call on the Non-MHA Minister of Public Works to come forward and tell us just what his government has in mind to complete this present farce.

The time is now!

SOCIETY FOR THE PREVENTION OF CRUELTY TO ANIMALS LABRADOR WEST

In connection with the recent establishment of the society's animal shelter and clinic in Labrador City.

The committee and members wish to acknowledge the help received from the following donors.

The local improvement district of Labrador City.

Carol Wabush Distributors
Messrs Connely & Twizell Ltd.
Richard & B.A. Ryan Coy. Ltd.
Messrs McNamarra Construction Ltd. Messrs Jubber's Bakery

Messrs Iron Arm Construction Coy. Ltd.

Messrs City Drugs Ltd.
Madam Carre

We would also say thank you to all those individuals who have contributed much towards making this venture a success.

The phone number of the animal shelter 944-5557

WINTER

IS COMING
WE'VE GOT
SNOW TIRES
DO YOU?

Safe WINTER DRIVING WITH TOP QUALITY TIRES AT PREMIUM PRICES

FREE, INSTALLATION AT TIME OF PURCHASE.

SUPER-WINTERIDE
ENGINEERED TO HANDLE ALL WINTER CONDITIONS
— Pinned for Studs for extra safety on hard packed snow and ice

- COMPLETE TIRE SALES AND SERVICE
- INDUSTRIAL RUBBER PRODUCTS
- STRATOFLEX HIGH PRESSURE HOSE AND FITTING
- PREMIUM BATTERIES

LABRADOR CITY PHONE 944-2641

THE BRICKLAYER AND HIS HELPER

LOOK OUT DOWN BELOW, I JUST DROPPED A BRICK!

SO THE DUMB HELPER LOOKED OUT OF THE WINDOW, SEE THE HOLE IN HIS HEAD.

**REPAIR • REMODEL
with PRICED-RIGHT**

LUMBER & BUILDING *Supplies*

FROM

LAB MONT

LTD

LAB MONT LTD. 944-5141

LABRADOR CITY

Retail Prices on Plywood

FIR PLYWOOD

1/4 SOIS	5.50
3/8 "	7.65
1/2 "	9.50
5/8 "	10.85
3/4 "	12.50
5/16 SELECT	5.60
3/8 "	5.98
1/2 "	7.98
5/8 "	8.98
3/4 "	10.98

SPRUCE PLYWOOD

5/16 STANDARD	4.45
3/8 "	4.95
1/2 "	6.65
5/8 "	7.75
3/4 "	9.45

WHOLESALE

&

RETAIL

Special Discounts

For Quantities

LAB MONT LTD. 944-5141

LABRADOR CITY



IDB LOANS, INVESTMENTS, RISE BY 12 PERCENT: Loans and investments of the Industrial Development Bank totalled \$531,285,371 outstanding at June 30, the bank reports. The total was up 12 per cent from a year earlier. A subsidiary of the Bank of Canada, it helps finance small and medium-sized businesses that cannot find funds elsewhere at commercial rates of interest. The IDB reported it authorized loans and investments totalling \$50,271,000 in April, May and June, the third quarter of its current fiscal year. This was up 7 per cent from the corresponding quarter last year.

PASSPORT: Ronald Saville, 47, was very good about visiting his mother in the old folks home in Isleworth, England. Only trouble; he always showed up drunk and shocked the other guests. So Mrs. Saville arranged for her son to visit the police station on his way to the home.



Participants in winter sports, photographed at Smokey Mountain Ski Lodge last season

Fire Prevention is everybody's job

WABUSH FIRE DEPARTMENT
282-3211.

CITIZENS OF WABUSH

October 3rd. to the 9th. is Fire Prevention Week. All across the nation, Fire Chiefs take this opportunity to talk to their citizens.

Fire is a very final means of destruction for both life and property belonging to man. Fire has no preference as to rich or poor, however it does have its victims, the thoughtless man.

This type of being is found in our city, on our streets and sometimes in our homes. What do you do when you find one? Sit him or her down and make quite clear to them that fire will strike, it maybe tonight, tomorrow or next week, but it will come. Fire has their name: tell them how they can get it back. Here's how:

1. Keep basements and attics clean. Don't give the fire fuel.

2. Do not create an electrical octopus: a two plug wall outlet was made for two plugs and not four or five.

3. Fuses are there to help you, do not replace burnt ones with

DRIVE-IN: The first drive-in theatre on the Island at Dollard des Ormeaux, is scheduled to open this week. To be called the Dollard des Ormeaux Drive-In, the theatre will have accommodation for 1,200 cars; and is equipped with two screens for the simultaneous showing of films in English and French.

higher amperage - or place something at the fuse base to stop it from blowing. Remember, you can buy a lot of fuses for the price of your home.

4. Don't leave food cooking, unattended, on the stove, especially fat cooked foods, you may find your whole kitchen well done.

5. Do not smoke in bed, or lying down on the couch; if you fall asleep you could sleep for eternity.

6. Do not throw used smoking materials in the waste can, unless you are sure they are out. Who wants to get up again to fight a fire?

7. Do not store quantities of flammable liquids in your basement such as gas or paint materials. You could wake up with a bang.

8. Keep children and fire or fire hazards far apart. The same flames that fascinate them, can hurt them.

9. Never leave little children home alone, you may not recognize them the next time you see them.

10. Plan ahead, with your family, don't let fire trap you in your own home.

11. If fire does occur, get everybody out, call the Fire Dept. at 282-3211, then try to put it out.

Please follow these simple rules, and make up some of your own, as to your needs.

When you do report a fire, report it slowly and calmly, give your name, address and if you can what is burning.



**CAMPBELL'S
ESSO SERVICE**

**ATLAS ANNUAL SNOW
TIRE SALE**

WINTER GRIP SAFE TIRE

775-14 **19.88**

WEATHER GUARD "S"

775-14 **24.88**

CAMPBELL'S SUPPORTS



OCT. 3-9

CAMPBELL'S ESSO

"WHERE THE CUSTOMER COUNTS"

994-2673



Winter sports will soon be starting -
Shown here is Smokey Mountain Ski Lodge



Speaking of Sports

L.C. MINOR HOCKEY "MOM'S" CLUB: The annual meeting and election of officers for the Labrador City "Mom's" Club" was held Sunday, Sept. 19th in the meeting room of the Arena. The following officers were elected: President: Mrs. Rose Best; Vice-President: Mrs. Donna Decker; Treasurer: Mrs. Cora Bartlett; Secretary: Mrs. Eileen Thoms; Sick Committee: Mrs. Mary Bullen.

In order to have a successful Moms' Club and give our boys support, we need as many mothers as are possibly available. Meetings are held every second Sunday of the month, at 2:30 p.m. in the Arena.

So how about it; why not come to our next meeting, Oct. 10th and help us plan for a fall sale.

We have about 400 boys involved in hockey and that means a lot of mothers. If you cannot make the meetings, we would appreciate any help you are willing to give ---from time

to time ---when we call on you.

WABUSH RECREATION ASSOCIATION

Many ladies have asked for an evening Fitness Class because they were unable to come for the 1:30 p.m. classes. As a result, new programs have been added to begin the week of the 11th of October.

TUESDAY & THURSDAY 6:30-7:30 p.m. . . . Ladies Fitness Class; **MON. & WEDNESDAY 6:30-7:30** . . . Men's Fitness Class

also

SATURDAY 12-2:00 p.m. . . . Teen Lifesaving (1 hour theory and 1 hour pool time)

Changes in the past schedule are:

Skin & Scuba Diving will be on Tuesday from 9:30-11pm Adult Lifesaving will be on Thursday night from 9:30-11pm. The General Swim between 11-12:00 p.m. Monday, Wednesday & Friday has been cancelled.

The Preschool Creative & Nursery Programs are in full swing and going very well every Monday, Wednesday and Friday between 1:30 and 3:00 pm. Cost is \$15.00 per month unless you are a card holder and then it would be \$10.00 per month. You may apply at any time for these programs.

WELL BABY CLINIC is on the first and last Tuesday of every month in rooms 4 & 5 between 2 and 4:30 p.m.

MOVIES are shown every Saturday at 2 pm for the 13 yrs and under group and also at 8:00 pm for the 14 years and over crowd. The evening movie is a double feature and admission is 50 cents. The afternoon movie is a single and costs 25 cents.

On Saturday, Oct. 2nd, the regular games will be in **GIANT** proportions, so don't miss this one! Time: 8:15 pm.

FRIDAY evening is Teens night. Dances and Discotheques are scheduled unless posted otherwise. The latest HIT records are being shipped in regularly for the Discotheques. So come over and LET LOOSE!

Dee D'Ganigian

CAROL LAKE RACING CLUB

On September 10, 1971 the Carol Lake Racing Club was officially formed with a starting membership of 17 motorcyclists. The principle aim of the club is to have competitive off the road racing including speed trials, hillclimbs, and motocross meets. During the winter competitive snowmobile racing will be attempted.

Presently, the club has been experimenting with a motocross

track beside the Javelin Road at the end of the airport runway. It has proven a complete success. In the near future the track will be improved and extended to allow for more competitive racing and spectator sport.

Competitive runs will be held every Sunday starting at 2:00 p.m. with practice runs commencing at 1:30 P.M. An entrance fee of \$2.00 will be charged for every motorcycle entered. This will help pay, for improvements to the track and the necessary equipment required to operate a competitive meet. No charge will be requested of spectators but donations would be appreciated. It is requested that the spectators observe the areas sectioned for spectators and that they listen to the requests of the officials. With the public's assistance I'm sure the Carol Lake Racing Club will be a complete success.

Club meetings are to be held every Wednesday in the Arena at 7:30 P.M. If you are a motorcycle enthusiast and wish to participate in the club activities, you are cordially invited to come to the meetings and join if so desired.

An event
on ice,
last winter



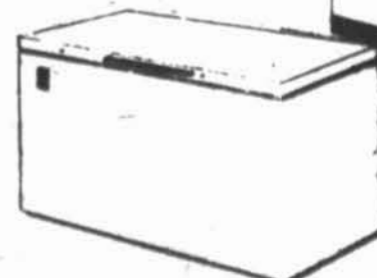
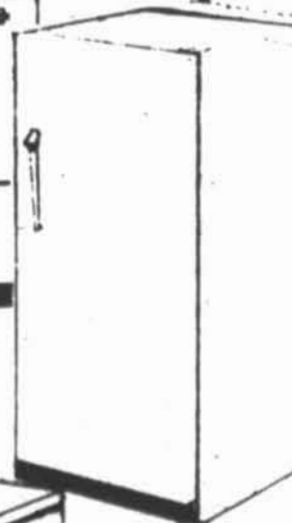
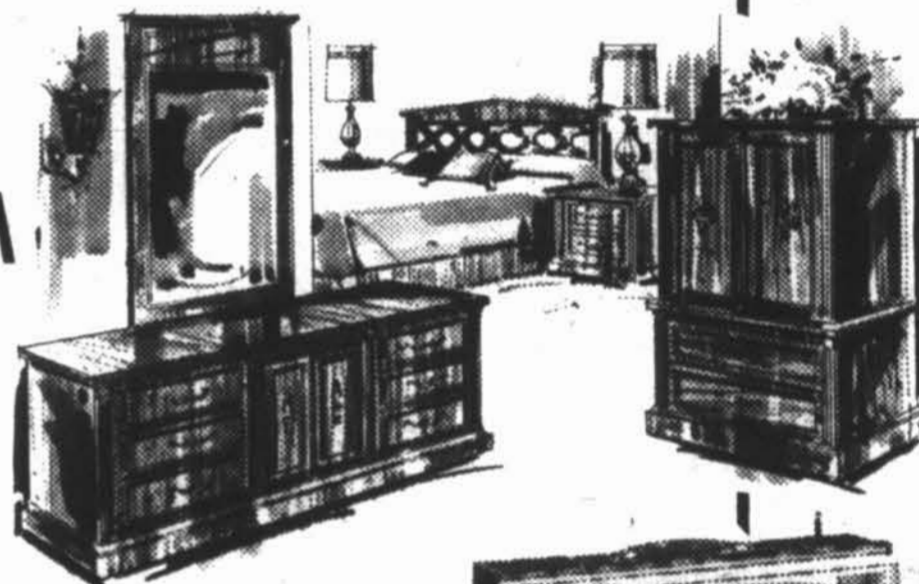
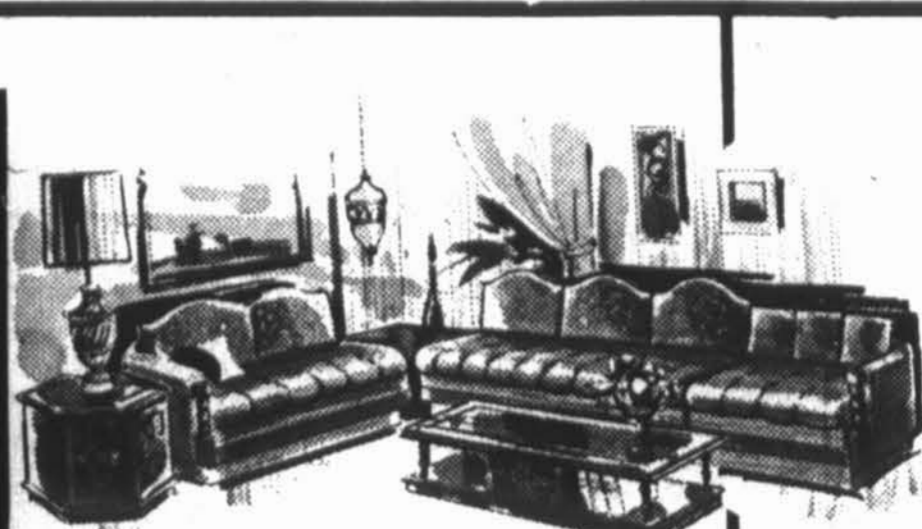
SEPTEMBER WAREHOUSE FURNITURE SALE.

R.C. CHURCH BASEMENT
10:00 am.
THURSDAY 30 SEPT.
TILL SATURDAY 2 OCT.
6:00 pm.

10% OFF

ALL ITEMS IN ORIGINAL CRATES

CHESTERFIELD SUITES, BEDROOM SUITES, T.V.'S, BUNK BEDS, MATTRESSES, CONTINENTAL BEDS, FOLDING COTS, ETC. REFRIGERATORS, RANGES, FREEZERS, ETC.



"DRAWING"
SATURDAY 2 OCT. AT 6:00 P.M. FOR
(1) HARDING CARPET, 9'X12" VALUE \$140.00
(1) WINCHESTER, 22 PUMP ACTION RIFLE
MODEL 270. VALUE \$79.95
EVERY PURCHASE SLIP GIVES YOU
A CHANCE TO WIN

COME ONE COME ALL TO THE BAY'S WAREHOUSE FURNITURE SALE. TAKE ADVANTAGE OF OUR A.P.A. & A.P.S.T.A. EASY PAYMENT PLANS.

FREE REFRESHMENTS SERVED. AT.
R.C. CHURCH BASEMENT
DURING OUR WAREHOUSE FURNITURE SALE.



LABRADOR CITY