

# CAROL

Centre for NWA Studies

# NEWS

VOLUME 4

ISSUE 23

P.O. BOX 1813

LABRADOR CITY APRIL 10, 1969

SECOND CLASS MAIL REGISTRATION NUMBER 1876



THE POLARIS FIGURE SKATING CLUB

PRESENTS

## "WELCOME TO SPRING"

AT THE LABRADOR CITY ARENA

ON SUNDAY, APRIL 13th

AT 4:00 p.m.

Figure skating began in Labrador City during the winter of 1961 when Mrs. Nancy Mann's imagination sparked forth the idea that young girls in town should have the opportunity, like the boys, to learn to appreciate good skating and to derive pleasure from it. Mrs. Mann's philosophy was to share with the girls the hours of pleasure which she had derived during her school days from plain ice skating and from figure skating. Thus, in 1961 an informal group, under her direction, bundled up once a week to skate on the outdoor rinks in the town. The same pattern was followed in 1962, 1963, and 1964. During these years the members would give a little presentation during the kiddies Costume Carnival, usually featured in the town's Winter Carnival Programme held in February or March.

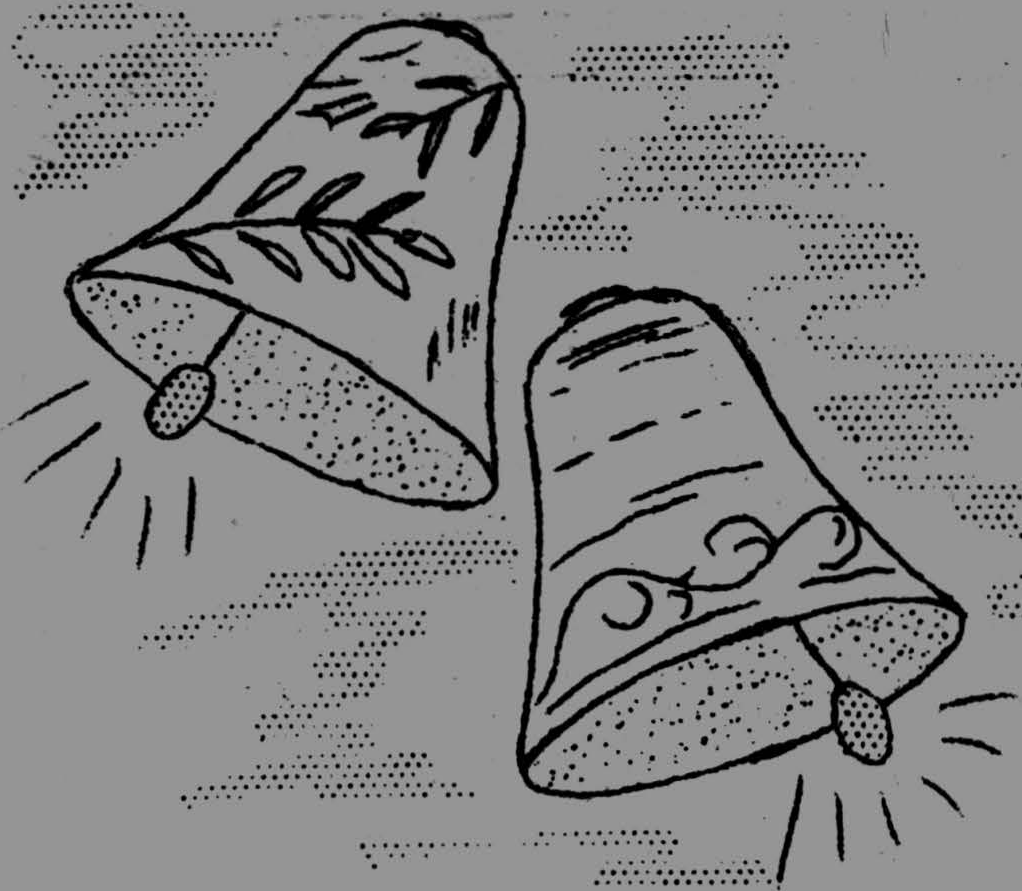
This year, 1969, the Polaris Figure Skating is presenting "Welcome to Spring" and the opening march will feature the newly chosen club colours in a precise military fashion. The Senior girls, costumed as gay señoritas will glide gracefully through a canasta tango.

Soloists and duos have practiced diligently for many weeks - counting jumping and pirouetting.

Our feature production, "Cinderella" backed by the Corps de Ballet, will take you to Fairyland where you will see the nice frolicking with their friends, the stepmother and stepsister enjoying their lovely clothes and freedom from work, and the ragged little girl change into a sparkling princess.

Please come to the arena on Sunday and see this fine show.

THE EXECUTIVE, POLARIS FIGURE SKATING CLUB.



COME TO CHURCH  
ON  
SUNDAY APRIL 13<sup>TH</sup>

**CHRIST CHURCH - WABUSH**  
Rev. Blake Walker

(All activities in new church building,  
Whiteway Drive)

Friday, April 11

2:00 pm. Childrens' Rally - including  
coloured pictures and coloured films;

" GROWING LIKE A GRASSHOPPER "  
and

" THE FIERY FURNACE ". All children  
are welcome to come along.

Sunday, April 13

11:00 am Morning Worship  
(Nursery included)

GUEST SPEAKER, REV. J.C.COOPER  
DIRECTOR OF CHURCH EXTENSION.

2:00 pm Sunday School (3 - 12 years)

4:00 pm Junior High Class (30, Bond)

7:00 pm Evening Worship

MIDWEEK ACTIVITIES:

Work parties for men - Monday & Thursday  
night from 6:30 pm.

WEDNESDAY

12:00 noon. Junior choir practice

8:00 pm. Midweek fellowship and senior  
choir practice.

THURSDAY

Religion in Life class - 12:00 noon.

**ST. PAUL'S ANGLICAN CHURCH**  
Rev. R.J. Bellamy

8:30 a.m. Holy Communion  
10:00 a.m. Morning Prayer

SUNDAY SCHOOL AS USUAL.

WEEKLY ACTIVITIES:

Monday at 7:00 p.m. Choir Practice

Tuesday at 7:00 p.m. Religion in Life  
Class.

Wednesday. 10:00 a.m. Holy Communion

Saturday. 11:30 a.m. Servers' Practice.

**ST. PETER'S ANGLICAN CHURCH - WABUSH**  
Rev. R.J. Bellamy.

Evensong 7:15 p.m.

FRIDAY

Holy Communion. 10:00 a.m.

**OUR LADY OF THE ASSUMPTION - WABUSH**  
Rev. J. Bergeron.

8:30 am Mass  
10:00 am Mass  
7:00 pm Mass

**CAROL UNITED CHURCH**  
Rev. Eric Snider

11:30 a.m. Morning Worship  
7:15 p.m. Youth Mission Service to be  
followed by a social hour.

SUNDAY SCHOOL:

9:45 a.m. Juniors 9 to 11 years

10:00 a.m. Intermediates 12 & 13 years

10:00 a.m. Primary 6 to 8 years

11:30 a.m. Nursery & Kindergarten

The Mothers' Room will be open for  
infants and tots.

WEEKLY ACTIVITIES:

Saturday at 10:00 am Fun Club for  
children 5 to 8 years.

7:00 pm Junior Choir and  
Sing-along Club for young people 12-16yrs.

Wednesday at 8:00 pm Senior Choir.

**SALVATION ARMY CITADEL**  
Captain H. Rideout

11:00 am Holiness Meeting

2:30 pm Sunday School

7:30 pm Evangelistic Service

TUESDAY: 4-0'clock club

Corp Cadets

7:00 pm.

WEDNESDAY: Singing Company.

4:30 pm.

Band Practice

8:00 pm

THURSDAY: Home League

8:00 pm

FRIDAY: Youth Fellowship

8:30 pm

**PENTECOSTAL CHURCH - GLAD TIDINGS**  
**TABERNACLE.** Pastor B.H. Hartwell.

11:00 am Morning Worship

3:00 pm Sunday School

7:30 pm Evangelistic Service

THURSDAY: Young People's Meeting 8:00pm

TUESDAY: Prayer Meeting 8:00pm

**OUR LADY OF PERPETUAL HELP**

Rev. F. Lemire. Rev. J. Laperriere.

9:00 am Mass

11:00 am Mass

5:00 pm Mass (French)

7:00 pm Mass

DURING THE WEEK: MASSES 4:00 pm.  
7:00 pm.

The four plays presented by the Labrador City Collegiate last Wednesday evening were "Night of the Black Toad" by Beatrice La Force, performed by Cabot House. Linda Batson who played Jane was awarded Best Supporting Actress, for her performance in this play - well done Jane!

Also from this production came 'Best Supporting Award' Richard Falc, who played 'The Traveller'. Richard performs very easy on the stage, has good projection and played his part very convincingly.

"The Refuge" by Paul McCoy was the choice of Columbus House and from this came the 'Best Actor Award' presented to Ed Lannon for his roll as John Asher, Ed really deserved this award, he played his part very well indeed - a good projection, his diction was excellent and he has a very comfortable appearance on stage. This young man is very promising.

Marilyn Dunfield, although playing a small part did excellent work and should be encouraged to continue in drama. She received a special mention from the adjudicator, Mr. Larry Moss.

The 'Best Actress Award' went to Nancy Reilly who played 'Lorna' in Grenfell's production "The Tell-tale Heart" by Edgar Allen Poe. Miss Reilly is a very pretty young lady with a very good talent for acting, her voice is strong, her diction - perfect and her movements on stage - easy. I have no doubts in my mind, when first seeing her on stage that she was certain to win this award. A very good young actress, "Keep up the good work, Nancy, and congratulations!"

The 'Best Production' award went to Guy House for their production "Hangman's Loose" by R.L. Sweeney. This was a job well done - first class team-work, stage setting was very good. The cast were all convincing, but perhaps a special mention should go to 'Harriett' and 'Minerva' played by Theresa Costigan and Jacqueline Williamson - these girls really played their parts well. As for 'Dudley' and 'May' played by Macal Penney and Judy Newell - well I think they were just 'fab' 'like crazy, man' their make-up and costumes (beatnik type) were terrific - wonderful performance kids!

Congratulations to the director, Mr. K. Williams and his assistant director, Mr. D. Evans - "Keep them at it, gentlemen, they are good, but still have work to do before the trip to Corner Brook".

Sharon Bryans, was congratulated by Mr Moss on an excellent performance on the most difficult part in the play - the old crone (Hilda). Well done Sharon!

Throughout the four plays I noticed a tendency of most of these young people to rush their lines. Remember, fellow actors and actresses, the importance of your diction, be articulate, make sure every word you utter is heard and understood by your audience. They haven't read the script, so it is up to you to convey the message. Take your time, don't leave your words unfinished.

I enjoyed watching these performers, and I wish them many happy and satisfying years on stage. To those going forward to Corner Brook, I would like to say "BREAK A LEG KIDS" this is a good luck wish used by people in the Theatre, they never say "GOOD LUCK" for believe it or not those are forbidden words and are considered "BAD LUCK" - LIKE CRAZY MAN

NOTICE FROM THE CAROL PLAYERS

THE CAROL PLAYERS OF LABRADOR CITY WILL  
BE CASTING FOR THREE ONE-ACT PLAYS ON

TUESDAY, APRIL 15

at 8:30 p.m.

IN THE ALL-PURPOSE ROOM OF THE LABRADOR  
CITY COLLEGIATE.

COME ALONG IF YOU ARE INTERESTED IN DRAMA

AS AN ACTOR OR AS A MEMBER OF THE STAGE  
CREW.

# PETS' CORNER

BY  
JEAN FARR

## IN APPRECIATION

I would like to express my sincere thanks to Judge Myles Murray and his very charming wife, Mrs Doreen Murray for the beautiful reception given me while visiting St. John's on March, 30. As their guest at Murray's Pond, I had the pleasure of meeting many wonderful and sincere people, all of them so interested in the work of our local S.P.C.A. of which I am Hon. Agent.

Mrs Murray is very active in the S.P.C.A. work in St. John's, and a pillar of strength in the society. We discussed the many problems facing us here in Labrador, and I have been assured of the complete support of the St. John's branch in working towards the elimination of such problems.

Among the many distinguished people I met at the reception was Mrs. Smith, president of the S.P.C.A., St. John's branch, to whom I am very grateful for the advise she gave to me.

On behalf of the members of the S.P.C.A., Labrador City and Wabush, and the Carol Players - THANK YOU AGAIN AND LONG MAY YOUR GOOD WORK CONTINUE !!!

\*\*\*\*\*

Would you like to own a pure bred female Boxer dog? She is eight months old and is registered with the Kennel Club. She is good natured and like all Boxers is very fond of children. Her owner must part with her due to unforeseen circumstances and is prepared to sell her at a financial loss to someone who could give her a good home. The price is \$75.00, which I may add is a bargain for a female Boxer, whether for breeding or as an affectionate and trustworthy pet.

INTERESTED PERSONS ARE ASKED TO PLEASE PHONE ..... 944 - 5101

\*\*\*\*\*

THERE WILL BE A MEETING OF THE S.P.C.A. ON SUNDAY, APRIL 20th. ALL MEMBERS AND ANYONE INTERESTED IN FURTHERING THE WORK OF THE SOCIETY IN LABRADOR CITY AND WABUSH IS ASKED TO ATTEND. WHETHER YOU OWN A PET OR NOT, IF YOU LOVE ANIMALS AND ARE BIG-HEARTED AND STRONG ENOUGH TO FIGHT THEIR CASE, COME ALONG AND GIVE YOUR SUPPORT.

SEE YOU THEN - SUNDAY, APRIL 20., IN THE MEETING ROOM OF THE LABRADOR CITY ARENA AT 3:00 p.m.

---

## - CHIT CHAT -

The Association of Registered Nurses would like to thank all those people who gave donations to the Bake Sale held on Thursday, April 3. It was a great success!

\*\*\*\*\*

TOM AND SHIRLEY DONNELLY of Stirling Crescent are proud to announce the birth of a baby girl on Friday, April 4th. A little sister for Paul.

\*\*\*\*\*

We are happy to see young WAYNE CLARK home from a spell in the Hospital.

\*\*\*\*\*

To MR & MRS RANDY O'BRIEN - a son, CHRISTOPHER MARK, born on March 29th and weighing 8.5 lbs - 10 oz. MANY CONGRATULATIONS!

\*\*\*\*\*

Happy birthday wishes go to KIMBERLEY KISS of 38, Anderson, Wabush, who will celebrate her first birthday on Saturday, April 12th. from all her small friends in Labrador City.

\*\*\*\*\*

A warm welcome to Labrador City, in spite of the cold weather, to MRS WILLIAMS. mother of Mrs Rod Butfy of Hamilton, Labrador City. Mrs. Williams comes from Bridgend, Glamorgan, Wales, and we sincerely hope that she enjoys her stay.

\*\*\*\*\*

Nice to see DENNIS HELLIWELL up and around, following an operation in Sept. Iles You can't keep a Yorkshireman down !:

COMING EVENTS, NOTICES ETC.

ASHUANUPI SOCIAL CLUB: THURSDAY, APRIL 10. Movie night at 9:00 p.m. presents  
" SANCTURY " starring Lee Remick and Yves Montand.  
FRIDAY, APRIL 11. Games Night: Jackpot 350 in 53  
SATURDAY, APRIL 12. DANCING TO THE "CHEVELLES" from  
9:00 p.m. to 12:00.  
SUNDAY, APRIL 13. LABRADOR CITY SOCCER LEAGUE DANCE  
DANCING FROM 8:30 p.m. to 12:30 a.m.  
\$3.00 double \$2.00 single  
TICKETS ARE AVAILABLE AT THE CLUB.  
TUESDAY, APRIL 15. Movie night at 9:00 p.m. presents  
" THE GUN " with Craig Stevens.  
THURSDAY, APRIL 17. Movie night at 9:00 p.m. " SMOKY"  
in colour starring Fess Parker.

PLEASE NOTE:

THE TAVERN WILL NOW BE OPEN AT 12:00 noon TO 8:00 p.m. ON  
SUNDAYS AND THE LOUNGE FROM 3:00 p.m. to 11:00 p.m.

\*\*\*\*\*

TOPS CLUB: The TOPS club will meet as usual this coming Monday evening  
April 14th at 8:30 p.m. Present members are urged to attend  
and any new members are very welcome.

ATTENTION !!! THE WELL BABY CLINICS AT THE JACKMAN MEMORIAL HOSPITAL WILL NOW  
BE HELD EACH WEDNESDAY FROM 1:30 p.m. to 3:00 p.m., AS WELL AS  
FRIDAY FROM 1:30 p.m. to 4:30 p.m.

LADIES AUXILIARY  
KNIGHTS OF COLUMBUS: The Ladies Auxiliary of the Knights of Columbus, wish to  
advise its members that their meeting will take place at the  
O'Brien Hall on Sunday, April 20th and not on April 13th  
as was previously planned. All wives of the K.of C. are  
invited to come along.

ANGLICAN WOMENS'  
ASSOCIATION: The Anglican Women's Association will be holding an Auction  
and Bridge Card Party at the St. Paul's and Carol United Church  
Basement on Thursday, April 17th., beginning at 8:15 p.m.  
ADMISSION ..... \$1.00 REFRESHMENTS WILL BE SERVED.

CAROL LADIES  
COMMUNITY CLUB: The Ladies of the Community Club will meet on Thursday, April  
10th at 8:30 p.m. in the all-purpose room of the Labrador City  
Collegiate. Guest speaker for the occasion will be the  
manager of our Dominion store, Mr. Hébert. All ladies of the  
community are cordially invited to attend. DON'T FORGET YOUR  
COFFEE CUP !

CURLING CLUB: MEN'S BONSPIEL will be played April, 11th, 12th and 13th. About  
45 rinks are expected with 16 prizes available in 4 events.

\*\*\*\*\*  
LAST MINUTE ADS.

FOR SALE: 1 Snow tire, 1 Summer tire - both mounted.  
G.M. Rims 670 x 15 944 - 2947

Davenport Single bed with mattress. 944 - 5746

ACCOMODATION REQUIRED FOR ONE MAN 944 - 2222  
\*\*\*\*\*

/// SIMPLE RECIPES TO CUT OUT & KEEP ///  
HOT HAM ROLLS

Mix ground ham with minced celery, prepared mustard and mayonnaise. Remove  
crusts from soft bread and spread bread with ham mixture. Roll up and secure  
with toothpicks. Brush with melted butter and bake in a hot oven (400°F.) until  
golden.

/// PERSONAL ADS ///

FOR SALE:

BEAUTIFUL BOXER DOG - INTERESTED PERSONS PLEASE CALL

PLEASE CALL:

944 - 5363

Rollaway Chesterfield with two chairs, suitable for basement.

944 - 5456

2 party dresses - size 10.

944 - 2610

1965 Fiat , low mileage, very clean. (\$950)

944 - 5287

Household furniture including: coffee table and end tables, record rack, dinette suite and lamp

944 - 5821

General Electric floor polisher in good condition

944 - 5112

1968 Volkswagen - 2500 miles. (\$1,700)

944 - 2718

1966 Plymouth Belvedere

944 - 2334

WANTED TO BUY:

Stroller in good condition

944 - 5692

LOST:

Ladies Opera Diamond wrist watch with oval face.  
(probably in the vicinity of the shopping centre, Labrador City) Great sentimental value. REWARD OFFERED

944 - 2201

Lost between the arena and Marconi Avenue - a pair of navy blue leotards (approx. a week ago)

944 - 2983

ACCOMODATION AVAILABLE:

Apartment for rent. Four rooms; private entrance; fully furnished.

944 - 5296

House for rent from May 5th to June 14th.  
Call at 709 Durrell or ring ....

944 - 5653

Can accomodate male or female roomer

944 - 2201

Two basement apartments fully furnished for rent

944 - 5549 after 6:00pm  
or all day Sat. & Sun.

Accommodation available for two male boarders or roomers

944 - 2513

KITTENS TO GIVE AWAY TO GOOD HOMES: FULLY TRAINED:  
EIGHT WEEKS OLD.

944 - 2163

FOUR KITTENS - TWO MONTHS OLD. WILL GIVE AWAY TO  
GOOD HOMES

944 - 5366

---

IF YOU HAVE A GAMBLING PROBLEM

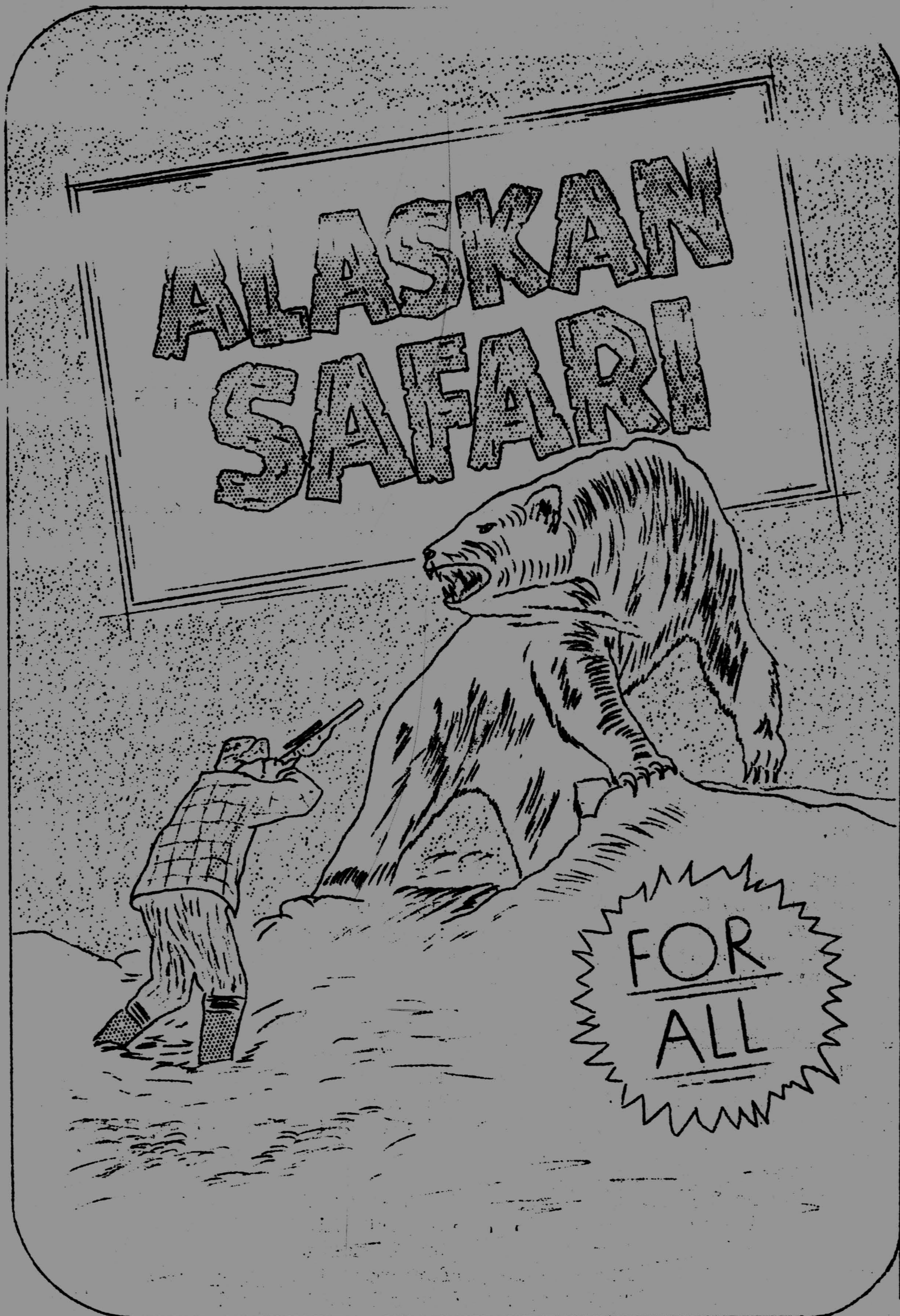
WRITE TO:

GAMBLING ANONIMOUS

P.O. BOX 2136

LABRADOR CITY

Le jeu vous cause-t-il des  
problèmes ? Si vous voulez  
arrêter et ne pouvez pas,  
c'est notre affaires. Gambler  
Anonyme, écrives à G.A. C.P.2136  
Labrador City.



SHOWING AT THE **ROYAL THEATRE**

APRIL 13<sup>TH</sup> - 16<sup>TH</sup>

**LABRADOR CITY**

SUNDAY SHOWTIMES

12 NOON - 2-15 - 4-30 - 7-00 - 9-15 P.M.

WEEKDAYS

4-30 - 7-00 - 9-15 P.M.

ADMISSION  
ALL SHOWS

ADULTS \$1-75

CHILD 75c

## CANADA'S NATIONAL ARTS CENTRE OPENS MAY 31

National Arts Centre, Ottawa, Canada, March, 1969 . . . . Canada's National Arts Centre, a \$46.4 million theatre complex in Ottawa, Ontario, will open to the public on May 31, 1969.

The Centre, built near the parliament buildings in Canada's national capital, contains a 2,300-seat opera house-concert hall, an 800-seat theatre, an experimental studio, a salon, a restaurant, a café, a 900-car garage, two bookshops, a record shop, a coffee shop and a boutique.

To operate the Centre, the Canadian government has created an independent corporation which will also help the Canada Council, a government grant-giving body, to develop the performing arts elsewhere in Canada.

The Centre complex, a series of hexagonal concrete buildings on public terraces of varying levels, has been built on a 6½-acre site partly donated by the City of Ottawa in Confederation Square.

Following the May 31 inaugural ceremonies, the Centre will launch a two-week opening festival, June 2-14, with the world première of *Kraanerg*, a ballet by Roland Petit with music by Iannis Xenakis, performed by the National Ballet of Canada.

Other attractions include performances by the Montreal and Toronto symphony orchestras, *Le Théâtre du Nouveau Monde*, The Playhouse Theatre Company from Vancouver, four chamber music groups, concerts by singer-composer Gordon Lightfoot and French-Canadian chanteuse Monique Leyrac, and the presentation of two experimental works commissioned by the Centre -- one a multi-media play, the other an opera.

Following the opening festival, the Centre will stage a full-scale summer programme of popular entertainment. Full details will be announced at a later date.

During the regular winter season in 1969-70, the Centre will present a winter programme by Canada's internationally-acclaimed Stratford National Theatre Company. In addition, the Centre's 45-piece orchestra, conducted by Mario Bernardi, and *Le Théâtre du Capricorne*, its resident French-language theatre company, will take their debuts.

### OFFICIAL OPENING AND FIRST PERFORMANCES

The Centre will be officially handed over to the National Arts Centre Corporation by the Department of Public Works on May 31. On that day an open house will be held for the general public and free entertainment will be organized on the terraces and in the lobbies.

Performances will be launched by a two-week festival, June 2-14, during which the Centre will present Canada's finest performing artists. The first performance will be in the opera house on June 2 when the National Ballet of Canada will present the world première performance of *Kraanerg*, a new work by Roland Petit with music by Greek composer Iannis Xenakis and designs by Victor Vassarely.

The theatre will open on the following day with an adaptation of the Aristophanes comedy *Lysistrata*, by *Le Théâtre du Nouveau Monde*, the famous French-language troupe from Montreal. It will be presented in the form of a musical drama bearing the additional title Make Love; Not War!

On June 4 the experimental studio will stage the première performance of *Party Day*, a multi-media work by Canadian playwright Jack Winter commissioned by the National Arts Centre.

continued .....

# INSURANCE

THE MALL, SHOPPING CENTRE  
LABRADOR CITY

manager  
MRS. VIRGINIA CAVERLY  
PHONE: 944 - 5388  
sub-agent  
MR. JESS KNEE  
PHONE: 944 - 2715

C O N T A C T

BOWRINGS INSURANCE

FIRE AUTO MARINE MISC

( A DIVISION OF DOWRING BROS. LTD. )

Continued.

National Arts Centre of Canada

The salon will be opened on June 5 with a performance by the Manitoba University Consort, a chamber music group from Winnipeg which specializes in the music of the Middle Ages and Renaissance played on instruments of these periods.

OPENING FESTIVAL PROGRAMME

During the opening festival, six performances will be given by the National Ballet in the opera house-concert hall. Kraanerg will be repeated on June 4 and the company will present Tchaikowsky's Swan Lake on June 3 and 7 and matinée and evening performances of Prokofiev's Romeo and Juliet on June 5. The Toronto Symphony Orchestra conducted by Seigi Ozawa will perform on June 6, and on June 8 singer-composer Gordon Lightfoot will give two concerts in the same hall. Jon Vickers, Régine Crespin, Richard Cross, Maureen Forrester, Sylvia Saurette, the Montreal Symphony Orchestra choir and Ida Haendel will be featured with the Montreal Symphony Orchestra conducted by Franz-Paul Decker, which will perform on June 10, 11 and 12. French-Canadian chanteuse Monique Leyrac will give a concert on June 13 and an environmental "pop" music and light show, Pop Electronique, will be presented on June 14.

Le Théâtre du Nouveau Monde's production of Lysistrata, June 3-7, is followed in the 800-seat theatre by Canadian playwright George Ryga's The Ecstasy of Rita Joe, June 9-14, staged by the Playhouse Theatre Company, from Vancouver. Party Day runs from June 4-7 in the studio and is followed by an experimental opera by Montreal poet-composer Gabriel Charpentier titled Orphée. This work, commissioned by the National Arts Centre, is dedicated to the Centre's architect, Fred Lebensold.

In the salon, the Manitoba University Consort plays on June 5 and 6, the orford Quartet from Toronto on June 8 and 9, Duo Pacht of Fredericton on June 10 and 11 and Vancouver's Cassenti Players on June 13 and 14.

Free entertainment will be presented on the terraces during the two-week festival.

BOX OFFICE

The box office opens in May but will accept mail orders for tickets for opening festival productions in April. The top ticket price for the opening night of Kraanerg is \$7.50 and top price for any production throughout the remainder of the festival will be \$6.50.

General box office policies after the opening festival will include discounts on group bookings, selling of gift certificates for tickets and selling standing room to full-house performances. The acceptability of certain credit cards is being studied.

SUMMER PROGRAMME.

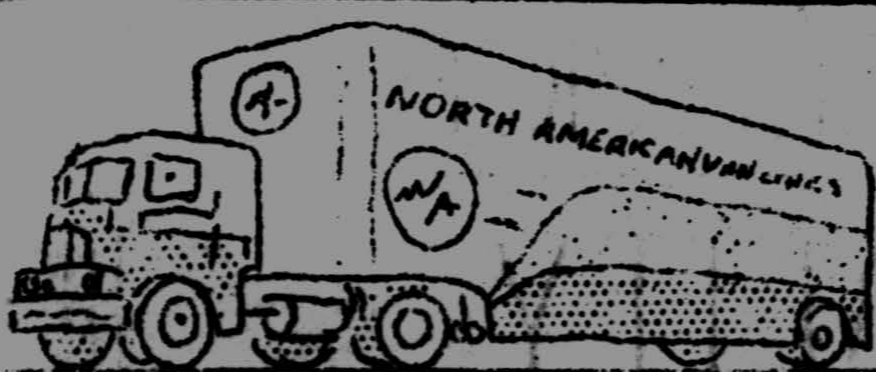
A summer programme of light entertainment will commence after the opening festival and run through Labour Day, September 1. Although final programming has not been announced, it is expected to include concerts by popular Canadian artists and internationally-known performers such as Harry Belafonte, a series of "pop" concerts by the Montreal Symphony Orchestra, light-hearted musicals such as Jacques Brel is Alive and Well and Living in Paris and a programme of Canadian and international films.

During the summer season the studio will be converted to a theatre-cabaret where drinks will be served and a bilingual revue, Love and Maple Syrup, will be staged.

FOOTNOTE:

IT WAS IMPOSSIBLE TO PUBLISH ALL OF THE PRESS RELEASE SENT TO THE CAROL NEWS BY THE NATIONAL ARTS CENTRE. THEREFORE ANYONE REQUIRING FURTHER INFORMATION IS ASKED TO CALL US AT

944 - 3334



FREE ESTIMATES  
EFFICIENT SERVICE  
LOCAL & LONG  
DISTANCE MOVING

HOUSEHOLD MOVERS  
the GENTLE men of the moving  
& SHIPPERS LTD. industry

DON BENSON-944-2481

PRESS RELEASE

FROM THE OFFICE OF THE LEADER OF THE PROGRESSIVE CONSERVATIVE PARTY OF Nfld.

\*\*\*\*\*

The 20th Anniversary of Confederation is a time to be thankful for the benefits resulting from membership in the Canadian nation. The 20th Anniversary of Confederation is a time to concentrate on the tasks of the future rather than either the accomplishments or mistakes of the past. The pace of change in Newfoundland today and the pressing needs for social and economic improvement are too real to allow us the luxury of being bogged down in a recital of events during the last twenty years.

Confederation has brought many benefits to the people of this province. Still, with the lowest standard of living in Canada, the highest cost of living in Canada, the highest rate of unemployment and the urgent needs for improvement in education, transportation and employment opportunities, the real challenge is how to have the benefits of Confederation accrue to all the people throughout the province.

This will require the best possible use of our human, natural and financial resources. It will require a planned economic development programme so that we know where we are going. Furthermore, it will require a new sense of perspective so that first things will in fact come first.

As Newfoundland Canadians, we cannot settle for second-class citizenship and restricted opportunities.

With intelligent planning and consistent effort, let us as a people reaffirm our confidence in Newfoundland and our determination to have the benefits of Confederation accrue in full measure to all the people of the province.

\*\*\*\*\*

/// TOP TIP ///

TO KEEP TRACK OF GLOVES AND MITTENS, STITCH ONE HALF OF A PRESS STUD ON ONE AND THE CORRESPONDING HALF ON THE OTHER. SNAP TOGETHER AND HANG OVER COAT HOOK OR LENGTH OF CORD OR RIBBON TACKED ALONG THE WALL.

# CAROL LAUNDRY

# DRYCLEANERS

## THE DRYCLEANING SPECIALISTS

LET YOUR CLEANING PROBLEMS BE OURS. WE WELCOME THE CHANCE TO PROVE OUR ABILITY

CALL 944-2226 FOR OUR PICKUP & DELIVERY SERVICE

FAST, EFFICIENT SERVICE

QUALITY WORKMANSHIP

ALCOCK AND BROWN TRANSATLANTIC FLIGHT TO BE RE-ENACTED

A symbolic re-enactment of the Historic Alcock and Brown Transatlantic Flight 50 years ago will be flown June 14-15, sponsored by The Royal Trust Company, it was announced by Premier J.R.Smallwood.

The Flight will be made in a Twin-engine Piper Navago, slightly smaller but of the same horsepower as the Twin-engine Vickers Vimy used by Alcock and Brown in the first non-stop Aerial Crossing of the Atlantic. Pilot will be Eugene E Locke, President of Aviation Services International, which ferries Piper Aircraft around the world, and acting as Co-pilot will be Thomas R.Lee, General Supervisor, Public Relations, Royal Trust, Ex RCAF Pilot.

Capt. John Alcock, D.S.C., RAF, Pilot, and Lieut. Arthur Whitten Brown RAF, Navigator, took off from Lester's Field, St.John's, on June 14 1919, and sixteen hours later landed in a bog at Clifden, Ireland. They won £10,000 offered by the Daily Mail for accomplishing the First Non-stop Aerial Crossing and both were knighted for the feat.

Locke and Lee will take off from St.John's on June 14, timing their take-off for arrival over Clifden at precisely the same time as Alcock and Brown did a half-century before. The Flight is expected to take 9½ hours. They will carry 197 letters as did Alcock and Brown, including some specially addressed to high authorities in Ireland and England.

"As one who witnessed the original take-off, I am particularly pleased that the Alcock and Brown feat is being commemorated in this way, Mr. Smallwood said.

.....  
/// AIR PASSENGER SUBSIDY COMES INTO EFFECT ON APRIL 7 ///

The Minister of Finance announces changes in the eligibility of Air Passenger Subsidy for individuals travelling by Eastern Provincial Airways between Newfoundland and Labrador. At present all individuals travelling for whatever purpose are eligible to receive the subsidy.

The change, which comes into effect April 7., will provide for the payment of a subsidy to passengers travelling for their own account and will eliminate individuals travelling for business purposes as well as those whose transportation has been paid for by the Armed Forces or Government. It is considered that this policy will provide benefits to that sector of the general public which is most in need of this subsidy, and may otherwise be prevented from travelling between Newfoundland and Labrador.

In summary, in future payment of the subsidy will be only on the basis that a traveller pays the total cost of transportation and such travel is for personal or family reasons only.

Those eligible to receive the subsidy will as of April 7th complete an application form available at the airlines ticket offices in Newfoundland and in Labrador, and present it in person, or by mail, to the Government through the Department of Labrador Affairs where it will be processed for eventual payment by cheque. Ticket stubs will have to be attached to the properly completed application form and eligibility for the subsidy will be determined by the Department of Labrador Affairs.

All subsidy refund vouchers which have been issued up to this date will be honoured in the usual way, but any vouchers issued as of April 7th must be presented to the Department of Labrador Affairs for payment.

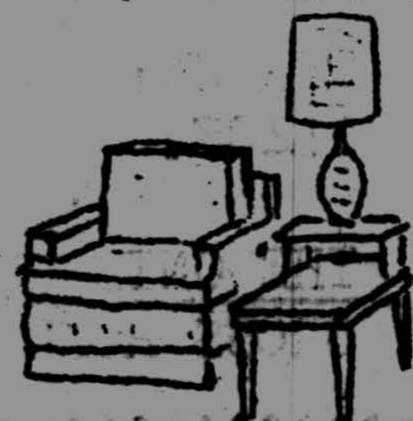
WHY WAIT TILL ITS TOO LATE ?

**Duraclean**

YOUR CARPETS & FURNITURE

RON. J. SHORT 944-5512

DURACLEAN RUG & UPHOLSTERY  
CLEANER



FOR FREE  
ESTIMATE



ALL DONE IN YOUR HOME

The CNIB'S battle against blindness gained momentum with the completion of the most extensive Sight Defect Detection Survey to date, and the announcement of plans for new surveys.

The Sight Defect Detection Survey recently conducted by CNIB in Central Newfoundland was the most extensive to date. Over 2,000 children between the ages of 3½ and 7 were given free vision tests. 256 of those were found to have a visual defect and have been referred to an oculist for a medical eye examination and treatment. The survey was conducted in the towns of Duchans, Bishop's Falls and Windsor. Residents from Duchans Junction, Millertown and Peterview were also included. The survey was organized by Miss L. Allison Sayers, CNIB Eye Service Supervisor, with the co-operation of the CNIB Central Newfoundland staff, Advisory Board, Ladies' Auxiliary, the local Lions Clubs, nurses and other volunteers. A co-ordinating committee was set up in each town to look after the recruitment of volunteers, locate suitable facilities and arrange transportation. These committees were under the chairmanship of the local Lions clubs in each town and worked extremely well.

The following is a breakdown of the statistics for each town:

DATE	PLACE	NO. OF CHILDREN TESTED	NO. OF CHILDREN RE-CHECKED	REFERRED TO OPHTHALMOLOGIST.
1969	Bishop Falls Dotwood (Including Peterview) Duchans (Duchans Junction, Millertown), Grand Falls, Windsor.	2060	586	256

Labrador will be the scene of the next survey. Miss Sayers will be travelling to Happy Valley at the end of May to conduct a survey in the Goose Bay Area. Mrs. F. Manning, Vice-Chairman of the CNIB Advisory Board, Miss I. Townsend, Public Health Nurse with the International Grenfell Association, and others are already at work recruiting volunteers and making other preliminary arrangements. It is planned to include children from Happy Valley, Spruce Park and Northwest River in this survey. Facilities will be arranged in each community so that the children will not have to travel far.

Plans are also underway for a similar survey at Baie Verte later this year. It is hoped to include children from the surrounding area in this survey. A further announcement concerning the dates will be made later.

Burin, Twillingate and Channell are also included in planned surveys for next year. Plans are also being considered for the provision of such services to other communities including those on the Avalon Peninsula.

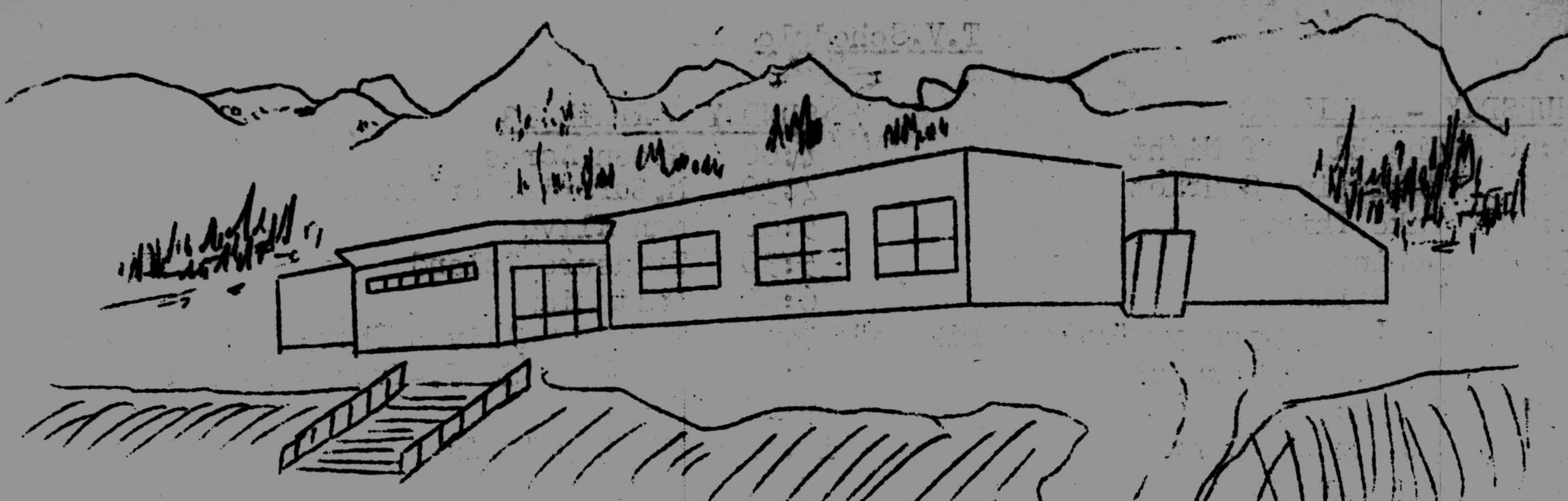
As the programme is developed and new techniques are introduced, it will be possible to carry out a greater number of surveys each year, so that this service will be available to all Newfoundland children in this age group.

**ATTENTION !!! THE AMBLYOPIA CLINIC FOR PRE-SCHOOL CHILDREN WILL BE HELD IN LABRADOR CITY ON APRIL 17th., AND IN WABUSH ON THE 10th & 24th APRIL.**

PERSONS WITH PRE-SCHOOL CHILDREN AGED 3½ YEARS AND UP, ARE ASKED TO CONTACT THE HOSPITAL AND LEAVE THE CHILD'S NAME AND AGE AS WELL AS A PHONE NUMBER.

THE CNIB WILL GET IN TOUCH WITH THE PARENTS BEFORE THE SCREENING TAKES PLACE.

**THE CNIB REQUIRES VOLUNTEERS !!! HOURS WORKED WILL COUNT TOWARDS RED CROSS HOME NURSING COURSE. P.I.N.**



# LABRADOR CITY ARENA

## /// WEEKLY SCHEDULE ///

THURSDAY, APRIL 10	LADIES & TOTS	10:00 am	to	11:30 am
	PUBLIC SKATING	2:00 pm	to	4:00 pm
	FIGURE SKATING	4:10 pm	to	6:10 pm
	PUBLIC SKATING	8:30 pm	to	10:30 pm
	CASUAL RENTALS	11:00 pm		
FRIDAY, APRIL 11	CASUAL RENTALS	8:00 am	to	2:00 pm
	PUBLIC SKATING	2:00 pm	to	4:00 pm
	FIGURE SKATING	4:00 pm	to	6:30 pm
	WABUSH LADIES HOCKEY	7:30 pm		
	BROOM BALL			
	MILL vs APOLLOS	9:00 pm		
	CHEM.LAB. vs HAWKS	10:00 pm		
	CASUAL RENTALS	11:00 pm		
SATURDAY, APRIL 12	PUBLIC SKATING	1:00 pm	to	3:00 pm
	FIGURE SKATING	3:15 pm	to	6:30 pm
	PUBLIC SKATING	8:30 pm	to	10:30 pm
SUNDAY, APRIL 13	CASUAL RENTALS	8:00 am	to	2:00 pm
	PUBLIC SKATING	2:00 pm	to	4:00 pm

.....  
 ^ FIGURE SKATING SHOW - 4:00 P.M. ^  
 .....  
 ^.....^

	BROOMBALL			
	NORTH STARS vs RAVENS	7:00 pm		
	WABUSH LAB. vs ADMIN.	8:00 pm		
	BOWRINGS vs APOLLOS	9:00 pm		
MONDAY, APRIL 14	CASUAL RENTALS	8:00 am	to	2:00 pm
	" "	6:00 pm	to	8:30 pm
	PUBLIC SKATING	8:30 pm	to	10:30 pm
TUESDAY, APRIL 15	LADIES & TOTS	10:00 am	to	11:30 am
	SCHOOL SKATING	3:30 pm	to	4:30 pm
	BROOMBALL			
	MILL vs RAVENS	7:00 pm		
	CHEM.LAB. vs NORTH STARS	8:00 pm		
	WABUSH LAB. vs APOLLOS	9:00 pm		
	ADMIN. vs HAWKS	10:00 pm		
WEDNESDAY, APRIL 16	SCHOOL SKATING	3:00 pm	to	4:30 pm
	BROOMBALL			
	BOWRINGS vs RAVENS	7:00 pm		
	MILL vs CHEM.LAB.	8:00 pm		
	WABUSH LAB. vs HAWKS	9:00 pm		

oooooooooooo

LABRADOR CITY ARENA  
 COMMERCIAL STORES  
 WABUSH

T.V. Schedule

THURSDAY - APRIL 10

4:00 The Edge of Night  
 4:30 Galloping Gourmet  
 5:00 Take Thirty  
 5:30 Bobino  
 6:00 La Boite  
 6:30 African Odyssey "Inland Mirage"  
 7:00 Nfld. News Digest  
 7:30 Telescope  
 8:00 Man at the Centre  
 8:30 Les Martin  
 9:00 Caméra '69  
 9:30 The Name of the Game  
 11:00 CBC News

FRIDAY - APRIL 11

4:00 The Edge of Night  
 4:30 Galloping Gourmet  
 5:00 Take Thirty  
 5:30 Bobino  
 6:00 La Boite  
 6:30 Toby  
 7:00 Where It's At !  
 7:30 Ma Sorciere Bien-Aimée  
 8:00 Atome et Galaxies  
 8:30 Get Smart  
 9:00 Don Messer  
 9:30 The Beverly Hillbillies  
 "Happy Bank"  
 10:00 Doris Day Show  
 10:30 The Great War  
 11:00 CBC News  
 11:10 Late Night Theatre  
 " Flight to Hong Kong "

SATURDAY - APRIL 12

4:00 CBC Sports Presents "Curling"  
 5:00 Yogi  
 5:30 Tour de Terre  
 6:00 Gentle Ben  
 6:30 Dugs Bunny Show  
 7:00 This Land of Ours  
 7:30 Tomny Hunter Show  
 8:00 N.H.L. Hockey (To be Announced)  
 10:30 Les Couche Tard  
 11:00 CBC News  
 11:10 Cinéma "Le Lit a deux places"

.....  
 THIS SCHEDULE IS SUBJECT TO CHANGE  
 WITHOUT  
 NOTICE  
 .....

SUNDAY - APRIL 13

4:00 Green Acres  
 4:30 M. Surprise Présente  
 5:00 Man Alive  
 5:30 Treasure Island  
 6:00 Walt Disney  
 7:00 The Ed Sullivan Show  
 8:00 Le Monde de J.-Yves Cousteau  
 9:00 Bonanza  
 10:00 The Way It Is

MONDAY - APRIL 14

3:00 Nfld. School Telecast  
 4:00 The Edge of Night  
 4:30 Galloping Gourmet  
 5:00 Take Thirty  
 5:30 Janek Prend La Fuite  
 6:30 Forest Rangers  
 7:00 Where It's At!  
 7:30 Front Page Challenge  
 8:00 A la Seconde  
 8:30 Le Paradis Terrestre  
 9:00 Show of the Week  
 10:00 The Carol Burnett Show  
 11:00 CBC News

TUESDAY - APRIL 15

3:30 Canadian School Telecast  
 4:00 The Edge of Night  
 4:30 Galloping Gourmet  
 5:00 Take Thirty  
 5:30 Bobino  
 6:00 La Boite  
 6:30 Swingaround  
 7:00 Abbott & Costello  
 7:30 The Red Skelton Hour  
 8:30 Moi et l'autre  
 9:00 Rue des Pignons  
 9:30 The Sound Denominator  
 10:30 Twenty Million Questions  
 11:00 CBC News

WEDNESDAY - APRIL 16

3:30 Nfld. School Telecast  
 4:00 The Edge of Night  
 4:30 Galloping Gourmet  
 5:00 Take Thirty  
 5:30 Bobino  
 6:00 La Boite  
 6:30 A Place of Your Own  
 7:00 Zoom  
 8:00 Mission Impossible  
 9:00 The Public Eye  
 9:30 Festival: "Journey of the Fifth Horse"  
 11:00 CBC News

ARRETES A VOTRE MAGASIN DOMINION

ET SOUVENEZ VOUS

C'EST SURTOUT A CAUSE DES VIANDES!

POUR INFORMATION AUX SUJETS DES  
 SPECIAUX, VOYEZ LA BROCHURE QUE SERA

DELIVREE A VOTRE PORTE

SHOP AT YOUR FRIENDLY DOMINION STORE

AND REMEMBER

IT'S MAINLY BECAUSE OF THE MEAT !

FOR INFORMATION OF OUR SPECIALS-  
 SEE THE BROCHURE WHICH IS BROUGHT

TO YOUR DOOR



**DOMINION STORES**

WABUSH

LABRADOR CITY

SHOP  
HERE

# BOWRINGS

— FOR QUALITY FOODS  
SPECIALS APRIL 10<sup>TH</sup> 11<sup>TH</sup> 12<sup>TH</sup>

## GROCERY DEPT.

FRESH BUTTER  
72¢/lb

MAPLE LEAF  
CHEDDAR CHEESE

16oz 79¢

MR CLEAN

32oz 95¢

BOWRINGS BREAD

16oz 22¢

TENDERFLAKE  
PURE LARD  
27¢/lb

## FRUITS & VEGETABLES

MCINTOSH APPLES  
3 lbs / 65¢

RED GRAPES  
2 lbs / 75¢

WHITE CAULIFLOWER  
39¢

## MEAT DEPT.

FULL ROUND  
STEAK  
\$1.07/lb

RUMP ROAST  
99¢/lb

MAPLE LEAF  
BACON  
93¢/lb

B. B. BOLOGNA  
\$1-39 EACH

MAPLE LEAF  
COOKED HAM  
6oz. 73¢

BOWRINGS